



Mostly favorable conditions, daytime rise in avalanche danger



Bregenzwaldgebirge, Allgäuer Alpen, Lechtaler Alpen, Verwall, Rätikon Ost, Silvretta, Rätikon West, Lechquellengebirge



Avalanche problems

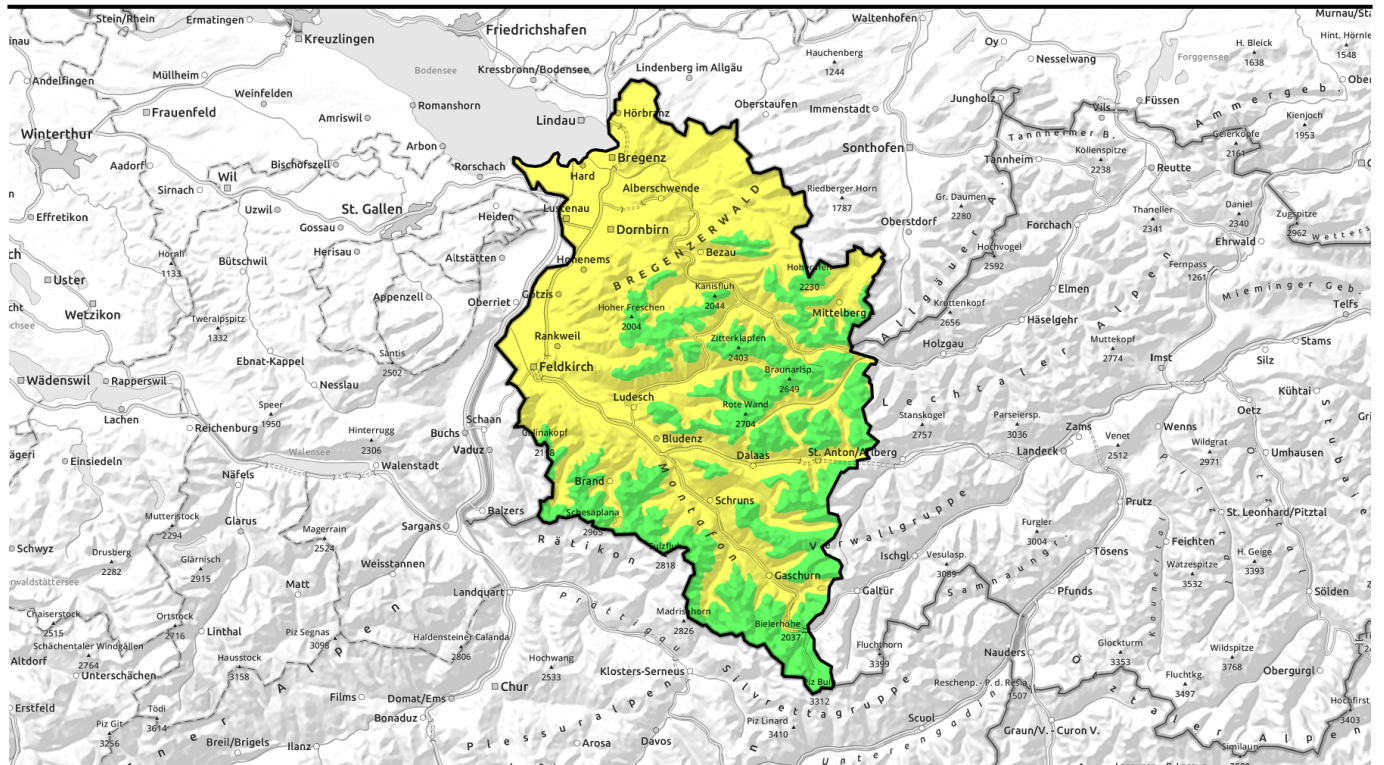


Danger ratings



Expositions

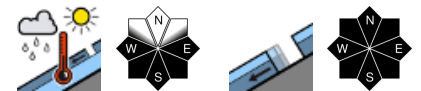




überwiegend günstige Verhältnisse mit tageszeitlichem Anstieg der Lawinengefahr

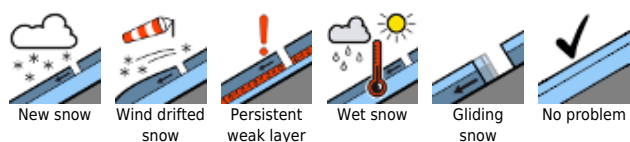


Bregenzerwaldgebirge, Allgäuer Alpen, Lechtaler Alpen, Verwall, Rätikon Ost, Silvretta, Rätikon West, Lechquellengebirge

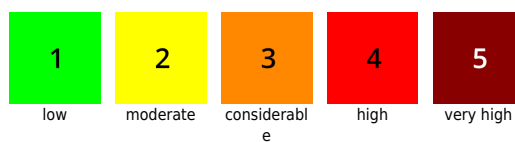


2600 m

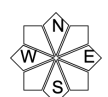
Avalanche problems



Danger ratings



Expositions



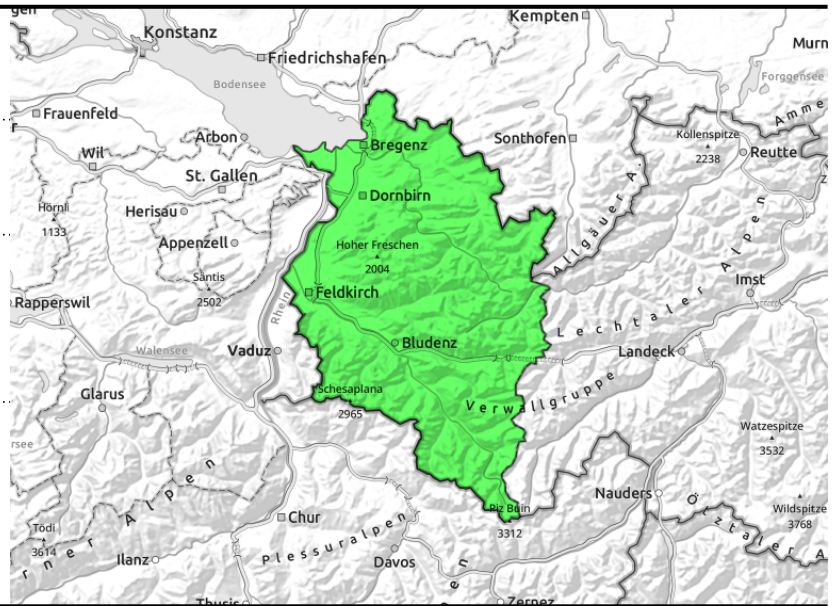
Bregenzerwaldgebirge, Allgäuer Alpen, Lechtaler Alpen, Verwall, Rätikon Ost, Silvretta, Rätikon West, Lechquellengebirge



wet-snow avalanches during the day esp. on sun-drenched slopes, due to solar radiation and warmth



possible at any time of day or night



Snowpack forfeits firmness, danger rises due to solar radiation, warmth

In the morning low avalanche danger prevails for a time. Isolated danger zones for dry-snow avalanches occur still in extremely steep, mostly shady terrain in high alpine regions. Apart from the risks of being buried in snow, the dangers of being swept along and forced to take a fall also require attentiveness. Due to warmth and solar radiation, the danger of wet-snow and glide-snow avalanches rises to moderate. Naturally triggered medium, some large-sized wet-snow and glide-snow avalanches are possible during the course of the day, especially on steep sunny slopes below 2600m. Zones below glide cracks in the surface should be avoided. Wet-snow avalanches can be triggered by one sole skier and reach medium size. Backcountry tours should start early, end early.

Snowpack structure

Following a night of cloudless skies and adequate outgoing longwave radiation, the snowpack was able to stabilize and form a melt-freeze crust capable of bearing loads. Below the crust, however, the snowpack is thoroughly wet and even the base is often wet up to high altitudes. On very steep smooth slopes this furthers the gliding movement of the entire snowpack. During the day the snowpack softens with varying rapidity depending on wind impact, gradient and aspect, further losing firmness.

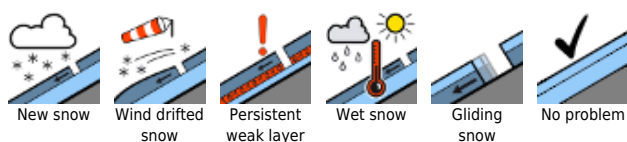
Weather

Sunny skies this morning, little cloud or cloudless. This afternoon, some cumulus clouds will move in, occasionally veiling some peaks. Isolated minor showers cannot be ruled out. The snowfall level will lie at 2000 m. At 2000 m: 0 to 4 degrees. Light winds at high altitude.

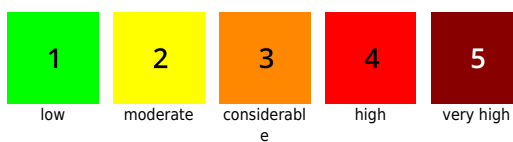
Outlook

On the weekend the situation is not expected to change significantly. Favorable conditions in early morning. The danger of wet-snow avalanches will rise on each day, due to solar radiation and daytime warming.

Avalanche problems



Danger ratings



Expositions



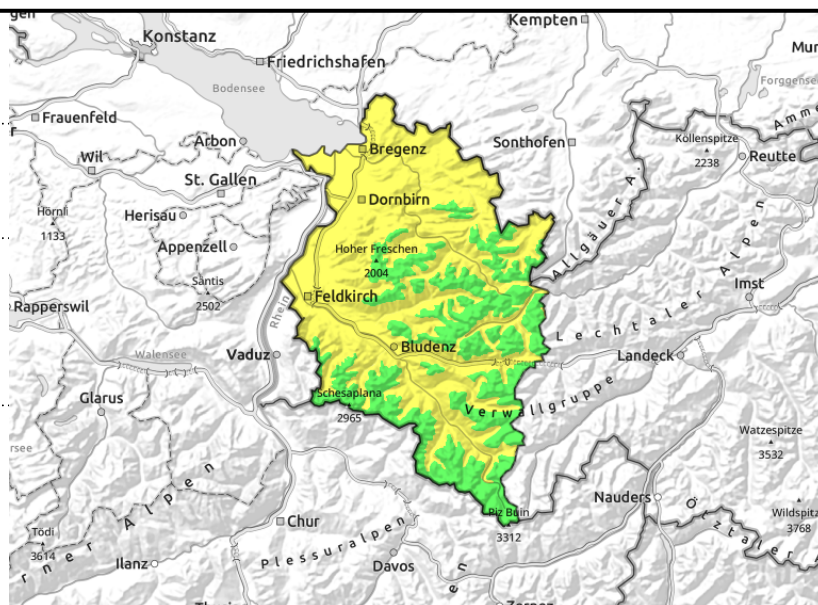
Bregenzerwaldgebirge, Allgäuer Alpen, Lechtaler Alpen, Verwall, Rätikon Ost, Silvretta, Rätikon West, Lechquellengebirge



wet-snow avalanches during the day esp. on sun-drenched slopes, due to solar radiation and warmth



possible at any time of day or night



Snowpack forfeits firmness, danger rises due to solar radiation, warmth

In the morning low avalanche danger prevails for a time. Isolated danger zones for dry-snow avalanches occur still in extremely steep, mostly shady terrain in high alpine regions. Apart from the risks of being buried in snow, the dangers of being swept along and forced to take a fall also require attentiveness. Due to warmth and solar radiation, the danger of wet-snow and glide-snow avalanches rises to moderate. Naturally triggered medium, some large-sized wet-snow and glide-snow avalanches are possible during the course of the day, especially on steep sunny slopes below 2600m. Zones below glide cracks in the surface should be avoided. Wet-snow avalanches can be triggered by one sole skier and reach medium size. Backcountry tours should start early, end early.

Snowpack structure

Following a night of cloudless skies and adequate outgoing longwave radiation, the snowpack was able to stabilize and form a melt-freeze crust capable of bearing loads. Below the crust, however, the snowpack is thoroughly wet and even the base is often wet up to high altitudes. On very steep smooth slopes this furthers the gliding movement of the entire snowpack. During the day the snowpack softens with varying rapidity depending on wind impact, gradient and aspect, further losing firmness.

Weather

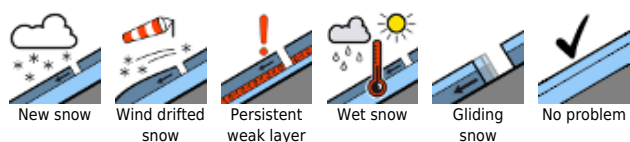
Sunny skies this morning, little cloud or cloudless. This afternoon, some cumulus clouds will move in, occasionally veiling some peaks. Isolated minor showers cannot be ruled out. The snowfall level will lie at 2000 m. At 2000 m: 0 to 4 degrees. Light winds at high altitude.

Outlook

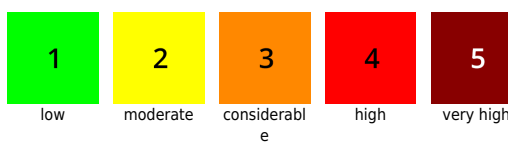
On the weekend the situation is not expected to change significantly. Favorable conditions in early morning. The danger of wet-snow avalanches will rise on each day, due to solar radiation and daytime warming.

Translated by Jeffrey McCabe, www.creativtrans.com

Avalanche problems



Danger ratings



Expositions

