



Predominantly favorable conditions, with daytime cycle of avalanche danger



Bregenzwaldgebirge, Allgäuer Alpen, Lechtaler Alpen, Verwall, Rätikon Ost, Silvretta, Rätikon West, Lechquellengebirge



Avalanche problems

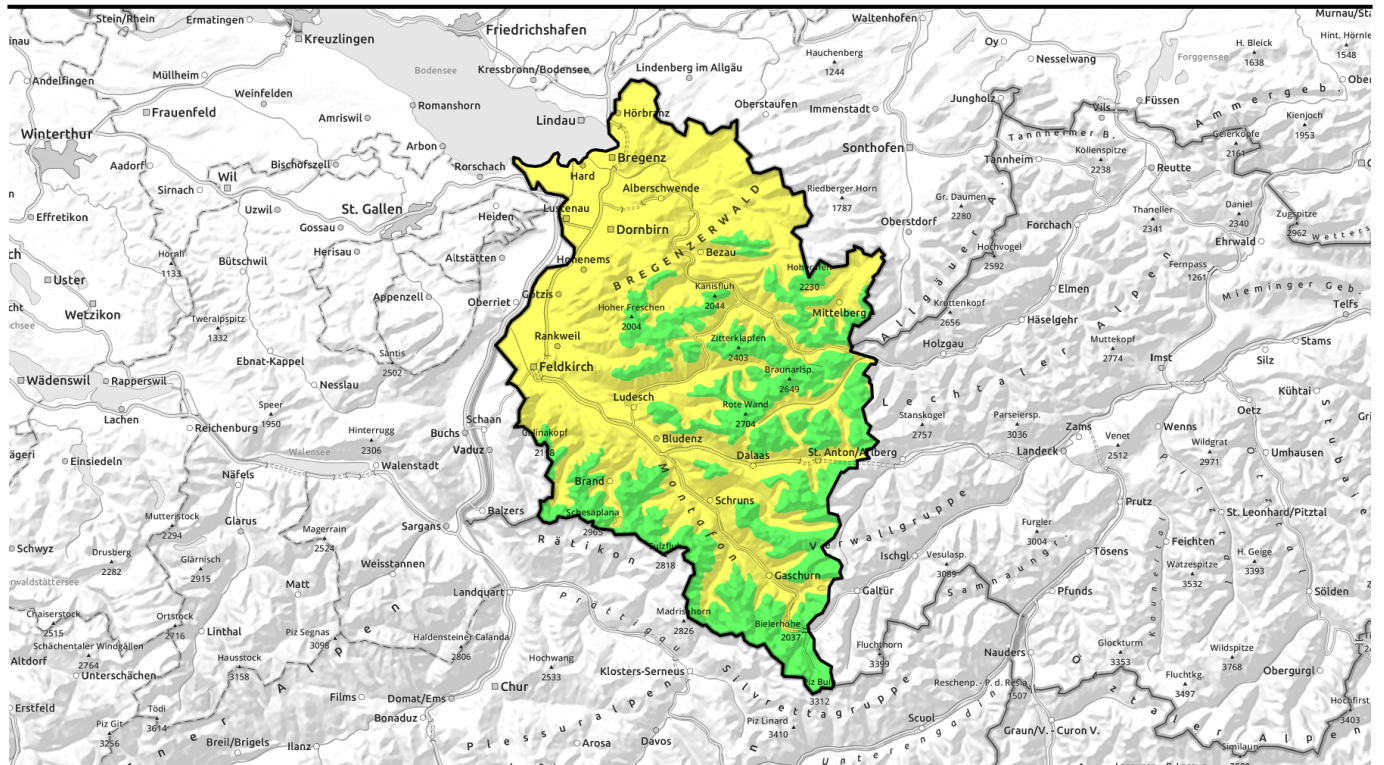


Danger ratings



Expositions

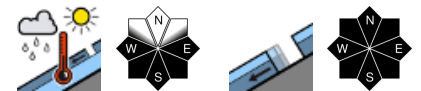




überwiegend günstige Verhältnisse mit tageszeitlichem Anstieg der Lawinengefahr

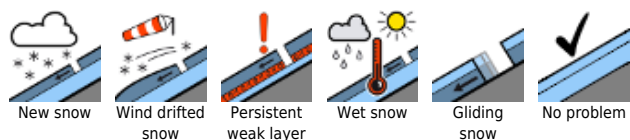


Bregenzerwaldgebirge, Allgäuer Alpen, Lechtaler Alpen, Verwall, Rätikon Ost, Silvretta, Rätikon West, Lechquellengebirge

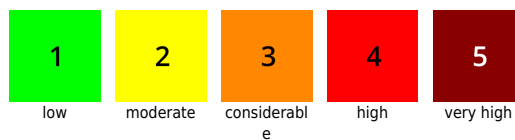


2600 m

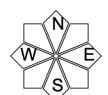
Avalanche problems



Danger ratings



Expositions



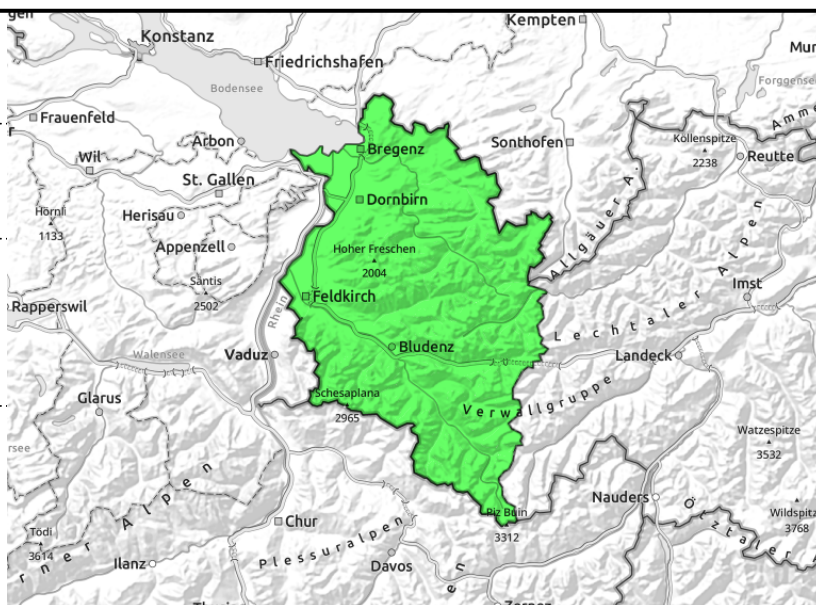
Bregenzerwaldgebirge, Allgäuer Alpen, Lechtaler Alpen, Verwall, Rätikon Ost, Silvretta, Rätikon West, Lechquellengebirge



wet-snow daytime avalanches, esp. on steep sun-drenched slopes, due to radiation, warmth



possible at any time of day or night



Snowpack forfeits firmness, danger rises due to solar radiation, warmth

In the morning low avalanche danger prevails for a time. Isolated danger zones for dry-snow avalanches occur still in extremely steep, mostly shady terrain in high alpine regions. Apart from the risks of being buried in snow, the dangers of being swept along and forced to take a fall also require attentiveness. Due to warmth and solar radiation, the danger of wet-snow and glide-snow avalanches rises to moderate, particularly on steep sun-drenched slopes. Naturally triggered medium, some large-sized wet-snow and glide-snow avalanches are possible during the course of the day, especially on steep sunny slopes below 2600m. Zones below glide cracks in the surface should be avoided. Wet-snow avalanches can be triggered by one sole skier and reach medium size. Backcountry tours should start early, end early.

Snowpack structure

Following a night of cloudless skies and adequate outgoing longwave radiation, the snowpack was able to stabilize and form a melt-freeze crust capable of bearing loads. Below the crust, however, the snowpack is thoroughly wet and even the base is often wet up to high altitudes. On very steep slopes this furthers the gliding movement of the entire snowpack. During the day the snowpack softens with varying rapidity depending on wind impact, gradient and aspect, further losing firmness.

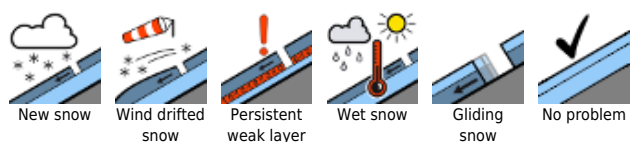
Weather

Cloudless skies all day long. Outstanding visibility. The zero-degree level lies at 2600 m. Temperature at 2000 m: +5 degrees. Light S/E winds.

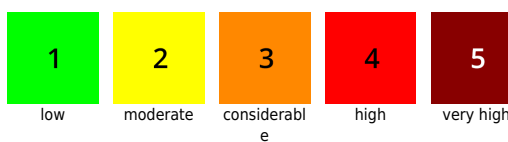
Outlook

On Friday, favorable conditions will continue, no significant change in the avalanche situation, despite less sunshine and isolated showers. The danger of wet-snow avalanches will increase during the daytime, due to higher temperatures and solar radiation.

Avalanche problems



Danger ratings



Expositions



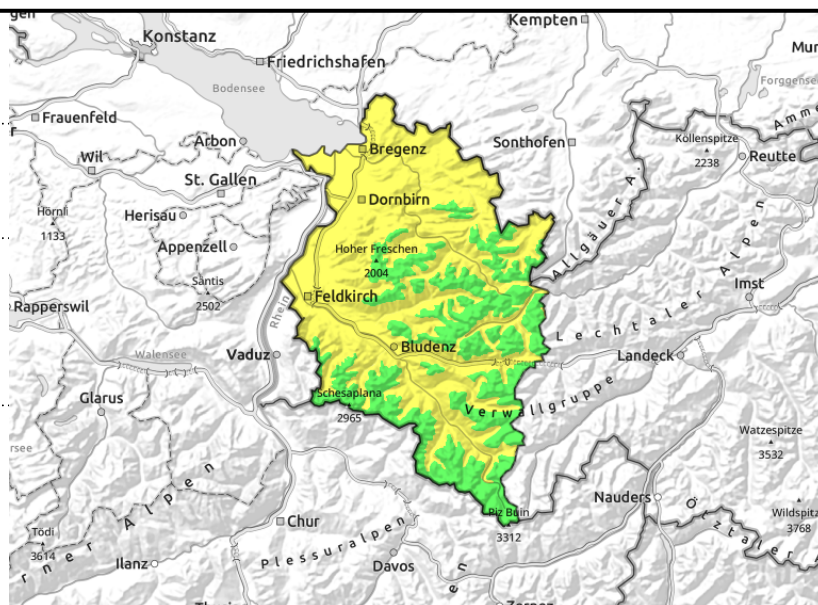
Bregenzerwaldgebirge, Allgäuer Alpen, Lechtaler Alpen, Verwall, Rätikon Ost, Silvretta, Rätikon West, Lechquellengebirge



wet-snow daytime avalanches, esp. on steep sun-drenched slopes, due to radiation, warmth



possible at any time of day or night



Snowpack forfeits firmness, danger rises due to solar radiation, warmth

In the morning low avalanche danger prevails for a time. Isolated danger zones for dry-snow avalanches occur still in extremely steep, mostly shady terrain in high alpine regions. Apart from the risks of being buried in snow, the dangers of being swept along and forced to take a fall also require attentiveness. Due to warmth and solar radiation, the danger of wet-snow and glide-snow avalanches rises to moderate, particularly on steep sun-drenched slopes. Naturally triggered medium, some large-sized wet-snow and glide-snow avalanches are possible during the course of the day, especially on steep sunny slopes below 2600m. Zones below glide cracks in the surface should be avoided. Wet-snow avalanches can be triggered by one sole skier and reach medium size. Backcountry tours should start early, end early.

Snowpack structure

Following a night of cloudless skies and adequate outgoing longwave radiation, the snowpack was able to stabilize and form a melt-freeze crust capable of bearing loads. Below the crust, however, the snowpack is thoroughly wet and even the base is often wet up to high altitudes. On very steep slopes this furthers the gliding movement of the entire snowpack. During the day the snowpack softens with varying rapidity depending on wind impact, gradient and aspect, further losing firmness.

Weather

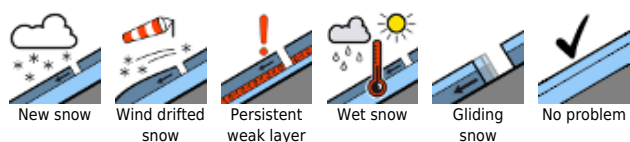
Cloudless skies all day long. Outstanding visibility. The zero-degree level lies at 2600 m. Temperature at 2000 m: +5 degrees. Light S/E winds.

Outlook

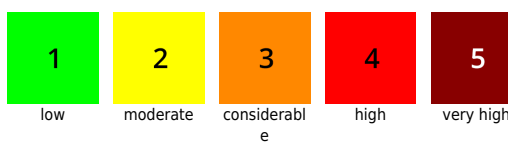
On Friday, favorable conditions will continue, no significant change in the avalanche situation, despite less sunshine and isolated showers. The danger of wet-snow avalanches will increase during the daytime, due to higher temperatures and solar radiation.

Translated by Jeffrey McCabe, www.creativtrans.com

Avalanche problems



Danger ratings



Expositions

