



Predominantly favorable conditions, with daytime cycle of avalanche danger



Bregenzwaldgebirge, Allgäuer Alpen, Lechtaler Alpen, Verwall, Rätikon Ost, Silvretta, Rätikon West, Lechquellengebirge



Avalanche problems

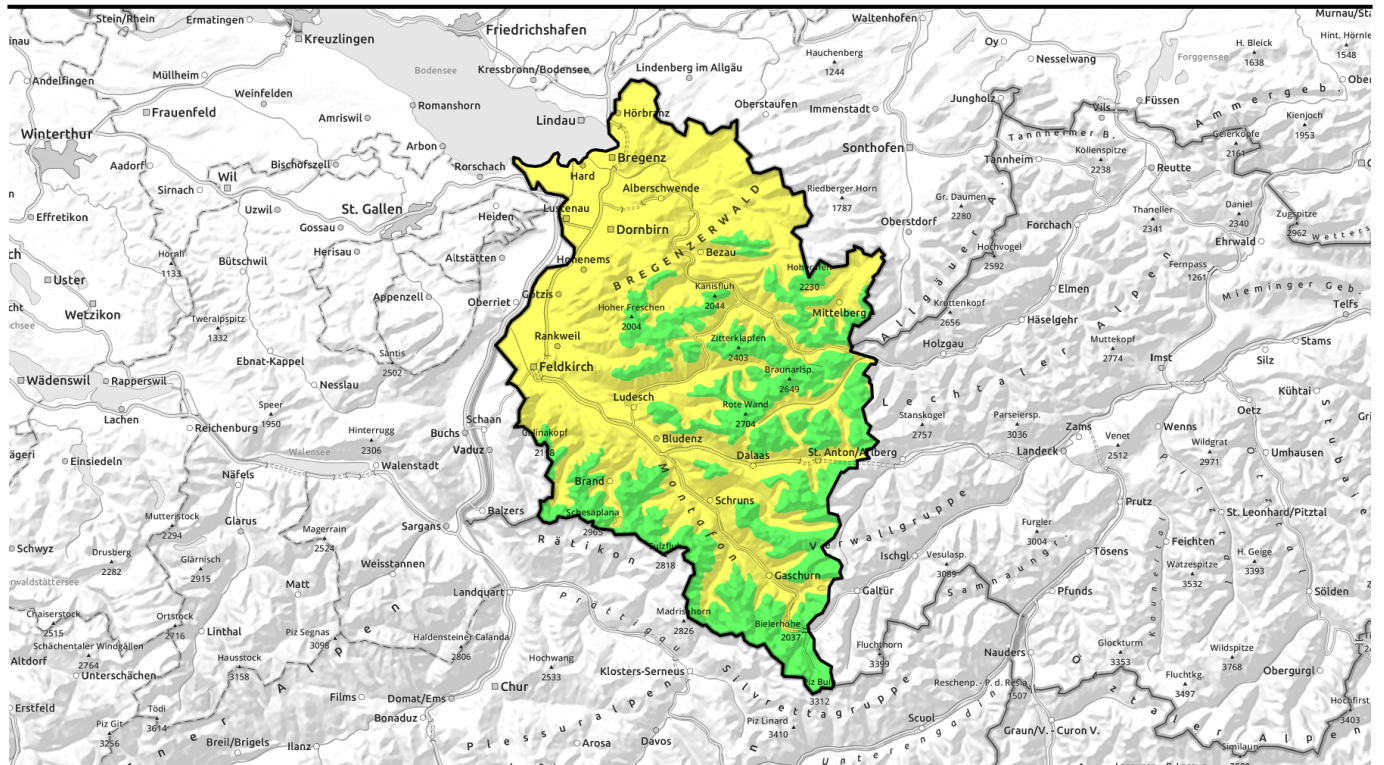


Danger ratings



Expositions

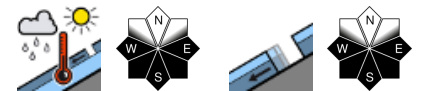




überwiegend günstige Verhältnisse mit tageszeitlichem Anstieg der Lawinengefahr

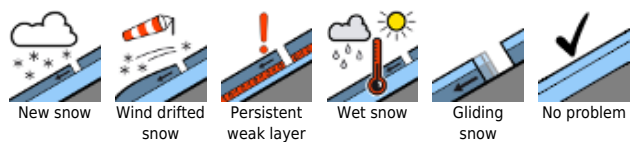


Bregenzerwaldgebirge, Allgäuer Alpen, Lechtaler Alpen, Verwall, Rätikon Ost, Silvretta, Rätikon West, Lechquellengebirge

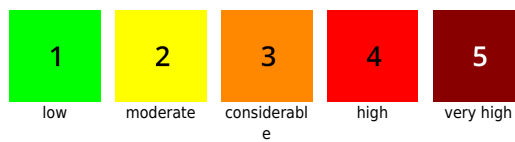


2600 m

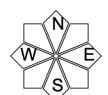
Avalanche problems



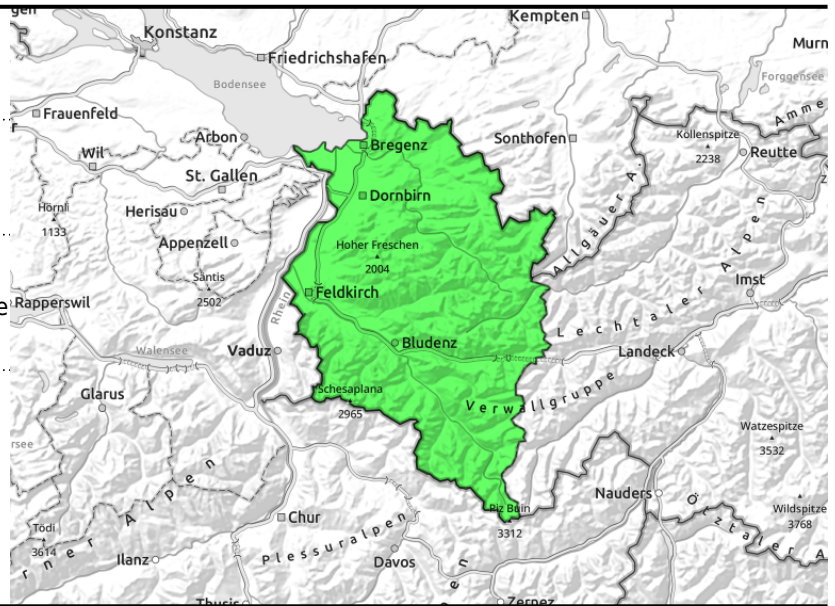
Danger ratings



Expositions



Bregenzerwaldgebirge, Allgäuer Alpen, Lechtaler Alpen, Verwall, Rätikon Ost, Silvretta, Rätikon West, Lechquellengebirge



wet-snow avalanches, esp. on steep sun-drenched slopes, due to radiation, warmth



possible at any time of day or night

Snowpack loses its firmness, danger rises due to solar radiation, daytime warmth

In early morning low avalanche danger prevails for a short time. Isolated danger zones for dry-snow avalanches occur still in extremely steep, mostly shady terrain in high alpine regions. Due to warmth and solar radiation, the danger of wet-snow and glide-snow avalanches rises to moderate as of late morning, particularly on steep sun-drenched slopes where there is no wind impact. Naturally triggered medium, some large-sized, wet-snow and glide-snow avalanches are possible during the course of the day, especially on steep sunny slopes below 2600m. Zones below glide cracks in the surface should be avoided. Wet-snow avalanches can be triggered by one sole skier and reach medium size. Backcountry tours should start early, end early.

Snowpack structure

Following a night of cloudless skies and good outgoing longwave radiation, the snowpack was able to stabilize and form a melt-freeze crust capable of bearing loads. Below the crust, however, the snowpack is thoroughly wet and even the base is often wet up to high altitudes. On very steep slopes this furthers the gliding movement of the entire snowpack. During the day the snowpack softens with varying rapidity depending on gradient and aspect, further losing firmness.

Weather

Cloudless skies all day long. Outstanding visibility, less hazy than yesterday. Brisk southerly winds in the classic foehn-exposed zones, which will dampen temperatures somewhat. Temperature at 2000 m: -3 to +3 degrees. Light to moderate SE winds.

Outlook

Favorable conditions continue, no significant change is expected. The danger of wet-snow avalanches increases during the daytime due to solar radiation and higher temperatures.

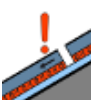
Avalanche problems



New snow



Wind drifted snow



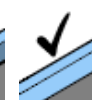
Persistent weak layer



Wet snow

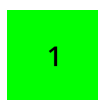


Gliding snow



No problem

Danger ratings



1

low



2

moderate



3

considerable



4

high



5

very high

Expositions



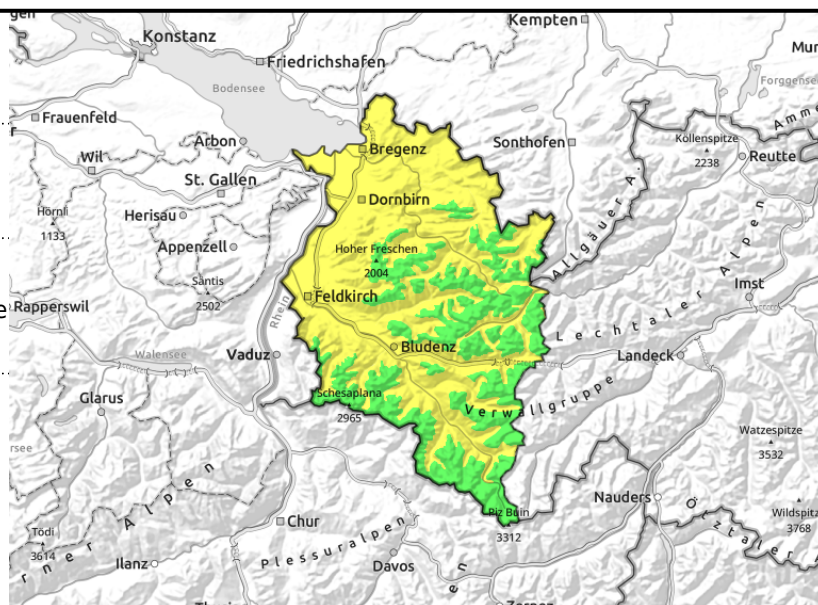
22.03.2022, afternoon

Bregenzerwaldgebirge, Allgäuer Alpen, Lechtaler Alpen, Verwall, Rätikon Ost, Silvretta, Rätikon West, Lechquellengebirge



wet-snow avalanches, esp. on steep sun-drenched slopes, due to radiation, warmth

possible at any time of day or night



Snowpack loses its firmness, danger rises due to solar radiation, daytime warmth

In early morning low avalanche danger prevails for a short time. Isolated danger zones for dry-snow avalanches occur still in extremely steep, mostly shady terrain in high alpine regions. Due to warmth and solar radiation, the danger of wet-snow and glide-snow avalanches rises to moderate as of late morning, particularly on steep sun-drenched slopes where there is no wind impact. Naturally triggered medium, some large-sized, wet-snow and glide-snow avalanches are possible during the course of the day, especially on steep sunny slopes below 2600m. Zones below glide cracks in the surface should be avoided. Wet-snow avalanches can be triggered by one sole skier and reach medium size. Backcountry tours should start early, end early.

Snowpack structure

Following a night of cloudless skies and good outgoing longwave radiation, the snowpack was able to stabilize and form a melt-freeze crust capable of bearing loads. Below the crust, however, the snowpack is thoroughly wet and even the base is often wet up to high altitudes. On very steep slopes this furthers the gliding movement of the entire snowpack. During the day the snowpack softens with varying rapidity depending on gradient and aspect, further losing firmness.

Weather

Cloudless skies all day long. Outstanding visibility, less hazy than yesterday. Brisk southerly winds in the classic foehn-exposed zones, which will dampen temperatures somewhat. Temperature at 2000 m: -3 to +3 degrees. Light to moderate SE winds.

Outlook

Favorable conditions continue, no significant change is expected. The danger of wet-snow avalanches increases during the daytime due to solar radiation and higher temperatures.

Translated by Jeffrey McCabe, www.creativtrans.com

Avalanche problems



Danger ratings



Expositions

