

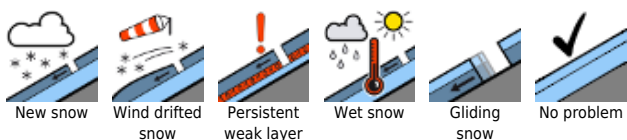
## Springtime conditions: swift daytime increase in avalanche danger



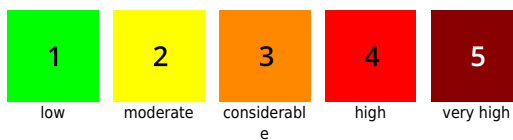
Bregenzerwaldgebirge, Allgäuer Alpen, Lechquellengebirge, Lechtaler Alpen, Verwall, Rätikon Ost, Silvretta, Rätikon West



### Avalanche problems

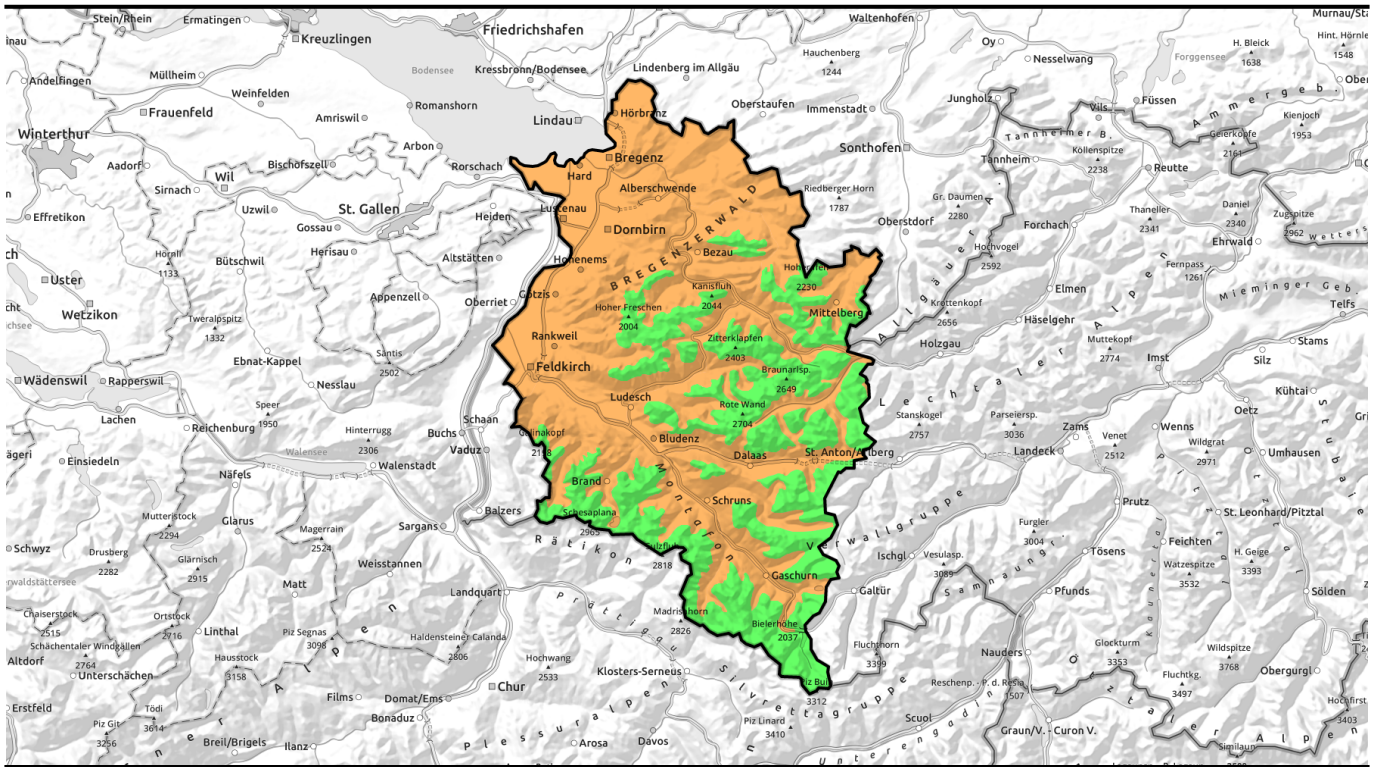


### Danger ratings



### Expositions





## Frühjahrsverhältnisse mit raschem tageszeitlichen Anstieg der Lawinengefahr.

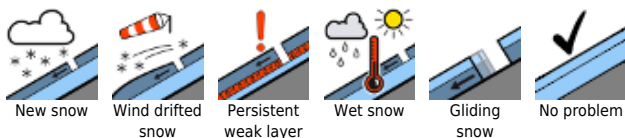


Bregenzeralpgebirge, Allgäuer Alpen, Lechquellengebirge, Lechtaler Alpen, Verwall, Rätikon Ost, Silvretta, Rätikon West

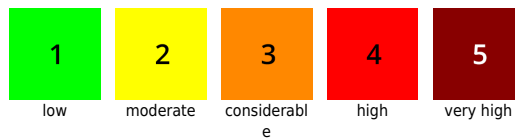


2600 m

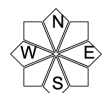
### Avalanche problems



### Danger ratings



### Expositions



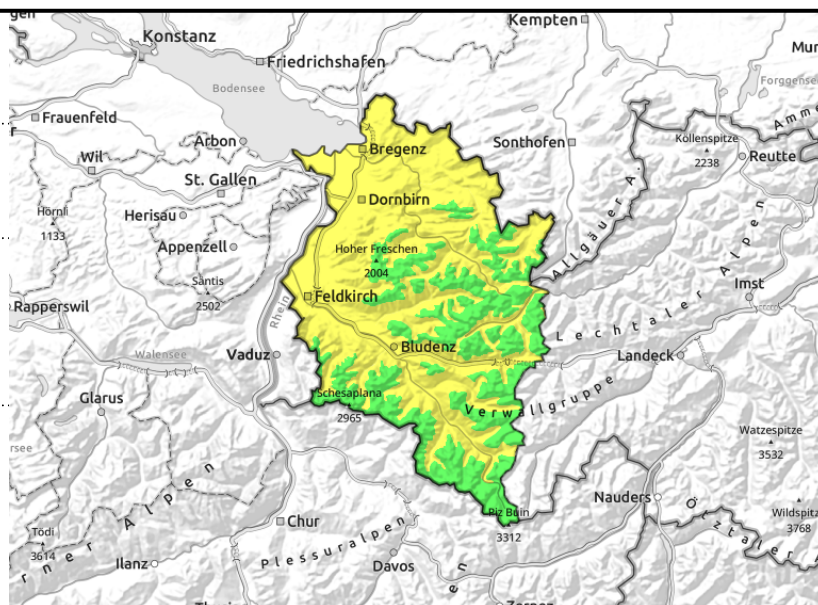
**Bregenzerwaldgebirge, Allgäuer Alpen, Lechquellengebirge, Lechtaler Alpen, Verwall, Rätikon Ost, Silvretta, Rätikon West**



due to daytime warmth and solar radiation, daytime cycle of naturally triggered wet avalanches also by skiers



possible at any time of day or night



## Snowpack softens with varying rapidity depending on radiation, steepness, aspect

In early morning favorable conditions reign for a short time, but danger of wet-snow and glide-snow avalanches rapidly increases to moderate, then to considerable during the course of the day. Due to warmth and solar radiation, increasingly frequent medium, some large-sized wet-snow and glide-snow avalanches are possible, particularly on steep sunny slopes below 2600m and in all aspects below 2000 m. Zones below glide cracks in the surface should be avoided. Wet-snow avalanches can be triggered by one sole skier and reach medium size. Backcountry tours should start early, end early.

### Snowpack structure

Cloud cover decreased on Friday night, skies cleared, outgoing longwave radiation was good, the snowpack was able to stabilize and form a melt-freeze crust capable of bearing loads. Below the crust, however, the snowpack is thoroughly wet and even the base is often wet up to high altitudes. On very steep slopes this furthers the gliding movement of the entire snowpack. During the day the snowpack softens with varying rapidity depending on gradient and aspect, further losing firmness.

### Weather

Saturday will bring pleasant weather to all the mountain regions, visibility will be much better than in recent days. After a sunny morning, convective cloud build-up is expected in the afternoon, isolated showers cannot be ruled out. At 2000 m: -1 degree. Mostly light to moderate E/NE winds at high altitudes.

### Outlook

The next few days will bring typical springtime conditions, including a daytime avalanche danger cycle.

#### Avalanche problems



#### Danger ratings



#### Expositions



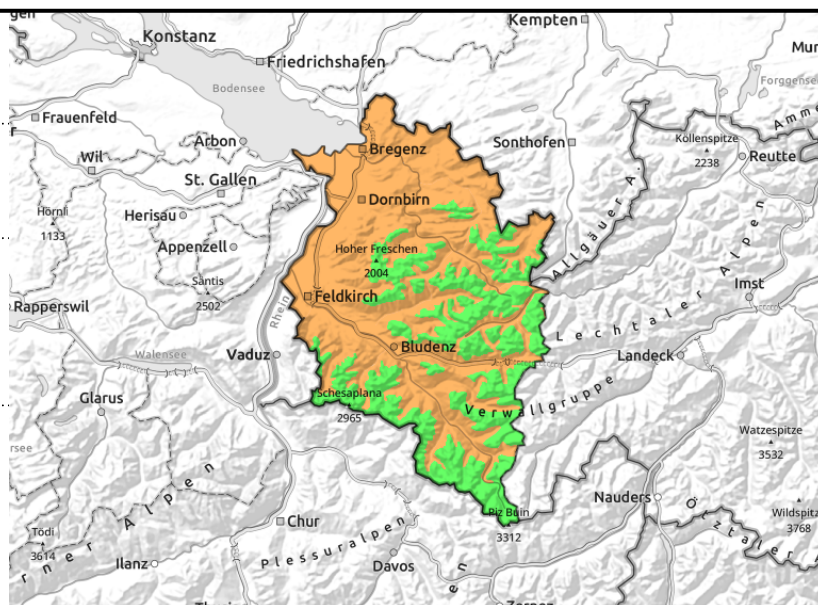
**Bregenzerwaldgebirge, Allgäuer Alpen, Lechquellengebirge, Lechtaler Alpen, Verwall, Rätikon Ost, Silvretta, Rätikon West**



due to daytime warmth and solar radiation, daytime cycle of naturally triggered wet avalanches also by skiers



possible at any time of day or night



**Snowpack softens with varying rapidity depending on radiation, steepness, aspect**

In early morning favorable conditions reign for a short time, but danger of wet-snow and glide-snow avalanches rapidly increases to moderate, then to considerable during the course of the day. Due to warmth and solar radiation, increasingly frequent medium, some large-sized wet-snow and glide-snow avalanches are possible, particularly on steep sunny slopes below 2600m and in all aspects below 2000 m. Zones below glide cracks in the surface should be avoided. Wet-snow avalanches can be triggered by one sole skier and reach medium size. Backcountry tours should start early, end early.

**Snowpack structure**

Cloud cover decreased on Friday night, skies cleared, outgoing longwave radiation was good, the snowpack was able to stabilize and form a melt-freeze crust capable of bearing loads. Below the crust, however, the snowpack is thoroughly wet and even the base is often wet up to high altitudes. On very steep slopes this furthers the gliding movement of the entire snowpack. During the day the snowpack softens with varying rapidity depending on gradient and aspect, further losing firmness.

**Weather**

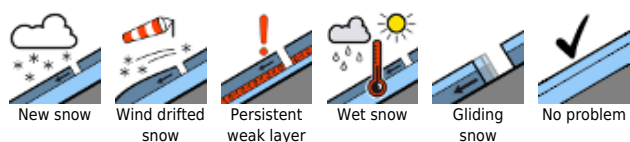
Saturday will bring pleasant weather to all the mountain regions, visibility will be much better than in recent days. After a sunny morning, convective cloud build-up is expected in the afternoon, isolated showers cannot be ruled out. At 2000 m: -1 degree. Mostly light to moderate E/NE winds at high altitudes.

**Outlook**

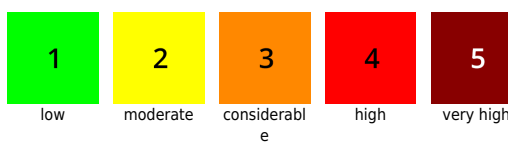
The next few days will bring typical springtime conditions, including a daytime avalanche danger cycle.

Translated by Jeffrey McCabe, [www.creativtrans.com](http://www.creativtrans.com)

**Avalanche problems**



**Danger ratings**



**Expositions**

