

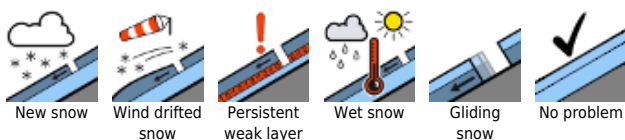
In the morning moderate avalanche danger below 2000m, above that altitude danger is low. Due to warmth and solar radiation, daytime increase in avalanche danger.



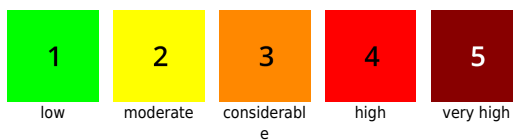
Bregenzwaldgebirge, Allgäuer Alpen, Lechquellengebirge, Lechtaler Alpen, Verwall, Rätikon Ost, Silvretta, Rätikon West



Avalanche problems

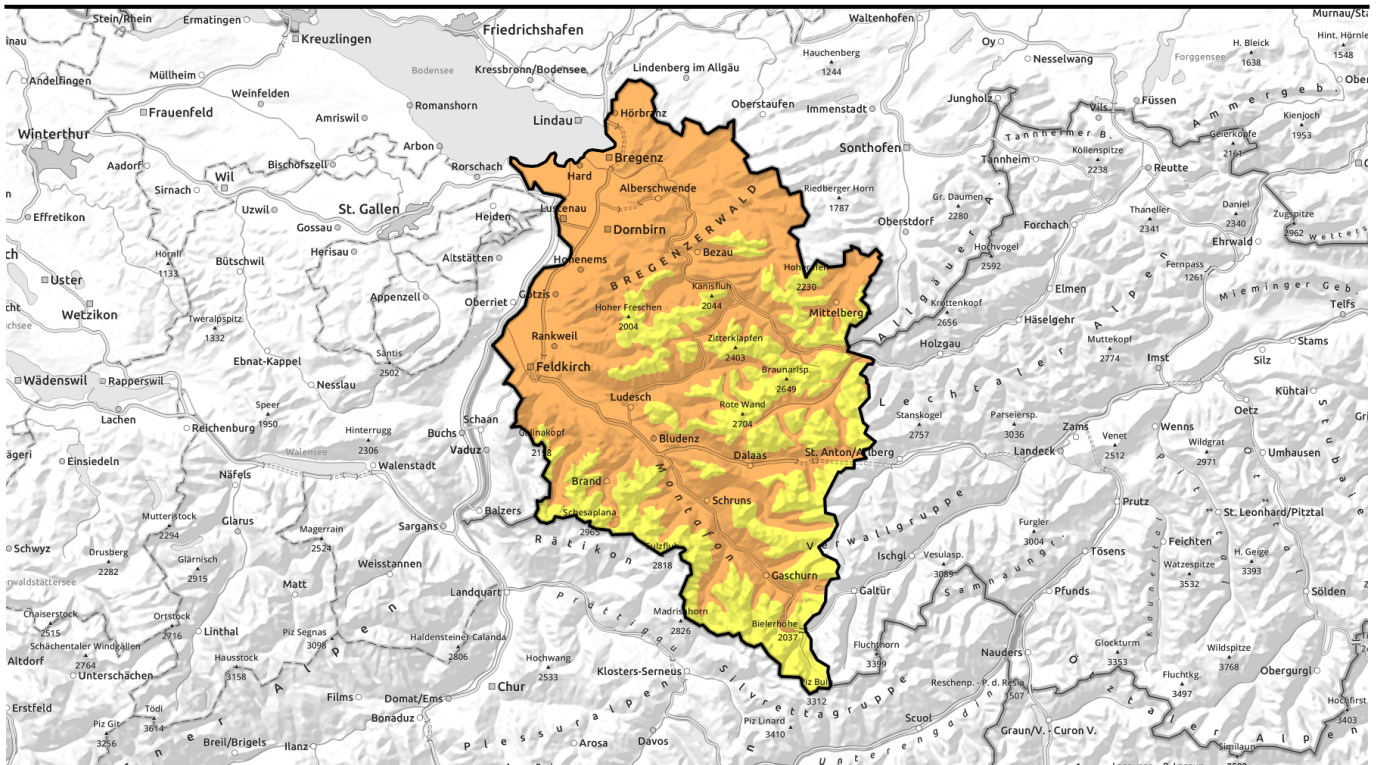


Danger ratings



Expositions

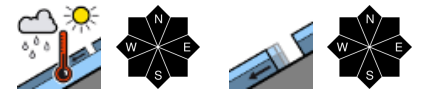




Am Vormittag ist die Lawinengefahr unterhalb etwa 2000m mäßig, darüber gering. Mit Erwärmung und Einstrahlung tageszeitlicher Anstieg der Lawinengefahr.

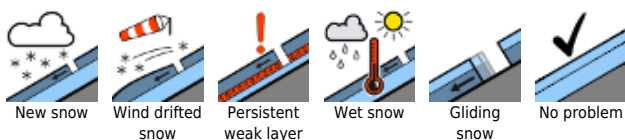


Bregenzwaldgebirge, Allgäuer Alpen, Lechquellengebirge, Lechtaler Alpen, Verwall, Rätikon Ost, Silvretta, Rätikon West



2500 m

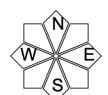
Avalanche problems



Danger ratings

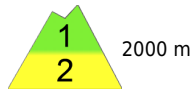


Expositions

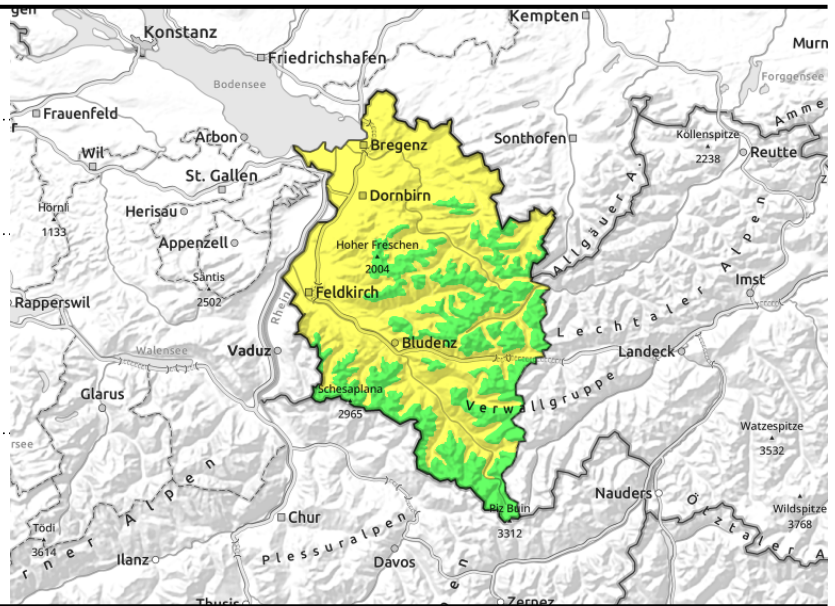


18.03.2022, morning

Bregenzerwaldgebirge, Allgäuer Alpen, Lechquellengebirge, Lechtaler Alpen, Verwall, Rätikon Ost, Silvretta, Rätikon West



due to daytime warmth and solar radiation, daytime cycle of naturally triggered avalanches on steep, sun-drenched slopes



Snowpack softens during the day, depending on solar radiation impact, steepness gradient and aspect.

In the morning avalanche danger below 2000 m is moderate, above that altitude danger is low. As a consequence of daytime warming and solar radiation the danger of wet-snow avalanches increases during the course of the day; mostly medium-sized, a few large-sized wet-snow and glide-snow avalanches can be expected, particularly on steep south-facing slopes below about 2500 m and steep west-facing and east-facing slopes below 2200 m, and in all aspects below 2000 m. Zones below glide cracks should be avoided. In addition, wet-snow avalanches can be triggered by one single skier and reach medium size. Backcountry tours should start early, end early.

Snowpack structure

Nighttime skies were heavily overcast for the most part, outgoing longwave radiation of the snowpack was reduced and light rainfall below 2000 m furthered the loss of firmness another notch. The snowpack was able, at best, to form a thin, breakable crust. During the day today it will soften superficially, depending on solar radiation, gradient and aspect. The seepage of Sahara dust has colored the snowpack, causing it to reflect less and thereby heightened the warmth inside it. Also yesterday there were more frequent wet-snow avalanches observed. At intermediate altitudes the snowpack base is moist. On very steep grass-covered slopes, this enhances the gliding movement of the entire snowpack. Mostly small snowdrift accumulations of recent days lie deposited on north-facing slopes atop an expansively metamorphosed (faceted) snowpack and are prone to triggering only in isolated cases.

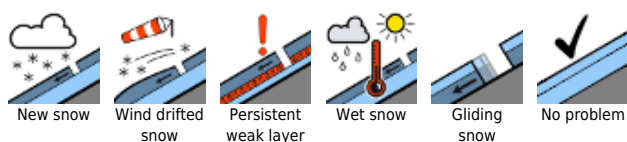
Weather

Little or no sunshine this morning, the higher peaks will be shrouded in fog. This afternoon some of the clouds will disperse, skies will clear up around sunset. Temperatures will recede at all altitudes. At 2000 m: 1 degree. Moderate to brisk E/NE winds.

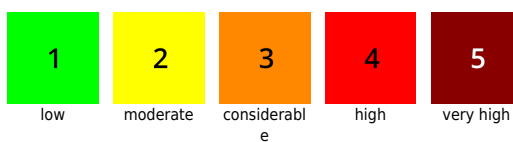
Outlook

Saturday will be quite sunny, visibility significantly better than in recent days. In the latter part of the day, some convective cloud build-up is anticipated, isolated showers cannot be ruled out. Favorable

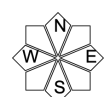
Avalanche problems



Danger ratings



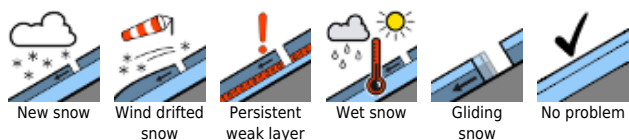
Expositions



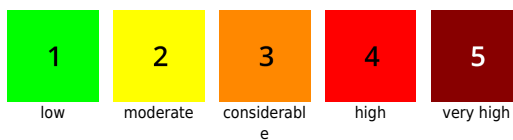
18.03.2022, morning

conditions reign in early morning. During the day the danger of wet-snow and glide-snow avalanches swiftly increases.

Avalanche problems



Danger ratings



Expositions

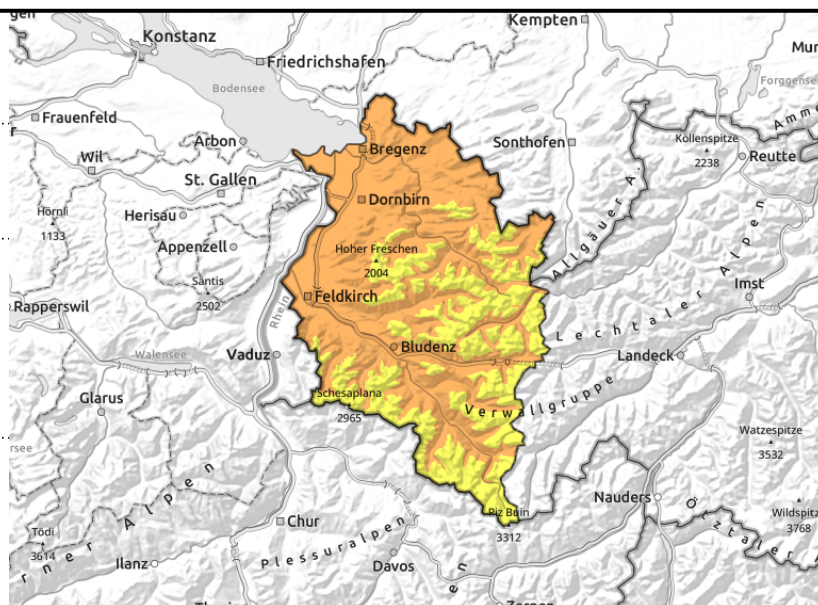


18.03.2022, afternoon

Bregenzerwaldgebirge, Allgäuer Alpen, Lechquellengebirge, Lechtaler Alpen, Verwall, Rätikon Ost, Silvretta, Rätikon West



due to daytime warmth and solar radiation, daytime cycle of naturally triggered avalanches on steep, sun-drenched slopes



Snowpack softens during the day, depending on solar radiation impact, steepness gradient and aspect.

In the morning avalanche danger below 2000 m is moderate, above that altitude danger is low. As a consequence of daytime warming and solar radiation the danger of wet-snow avalanches increases during the course of the day; mostly medium-sized, a few large-sized wet-snow and glide-snow avalanches can be expected, particularly on steep south-facing slopes below about 2500 m and steep west-facing and east-facing slopes below 2200 m, and in all aspects below 2000 m. Zones below glide cracks should be avoided. In addition, wet-snow avalanches can be triggered by one single skier and reach medium size. Backcountry tours should start early, end early.

Snowpack structure

Nighttime skies were heavily overcast for the most part, outgoing longwave radiation of the snowpack was reduced and light rainfall below 2000 m furthered the loss of firmness another notch. The snowpack was able, at best, to form a thin, breakable crust. During the day today it will soften superficially, depending on solar radiation, gradient and aspect. The seepage of Sahara dust has colored the snowpack, causing it to reflect less and thereby heightened the warmth inside it. Also yesterday there were more frequent wet-snow avalanches observed. At intermediate altitudes the snowpack base is moist. On very steep grass-covered slopes, this enhances the gliding movement of the entire snowpack. Mostly small snowdrift accumulations of recent days lie deposited on north-facing slopes atop an expansively metamorphosed (faceted) snowpack and are prone to triggering only in isolated cases.

Weather

Little or no sunshine this morning, the higher peaks will be shrouded in fog. This afternoon some of the clouds will disperse, skies will clear up around sunset. Temperatures will recede at all altitudes. At 2000 m: 1 degree. Moderate to brisk E/NE winds.

Outlook

Saturday will be quite sunny, visibility significantly better than in recent days. In the latter part of the day, some convective cloud build-up is anticipated, isolated showers cannot be ruled out. Favorable

Avalanche problems



Danger ratings



Expositions

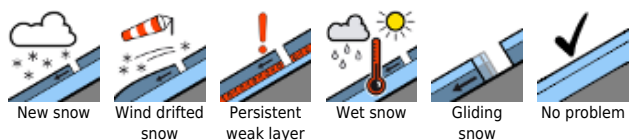


18.03.2022, afternoon

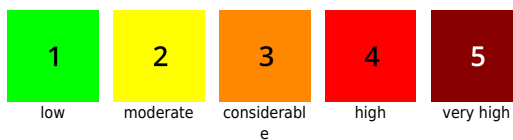
conditions reign in early morning. During the day the danger of wet-snow and glide-snow avalanches swiftly increases.

Translated by Jeffrey McCabe, www.creativtrans.com

Avalanche problems



Danger ratings



Expositions

