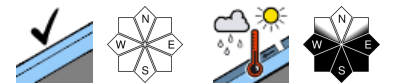


Favorable backcountry touring conditions - Daytime rise in risk of wet-snow avalanches



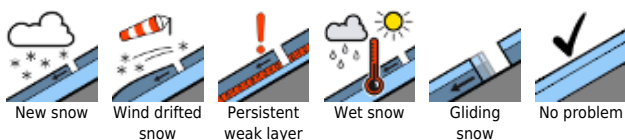
Verwall, Rätikon West, Bregenzerwaldgebirge, Allgäuer Alpen, Lechquellengebirge, Lechtaler Alpen



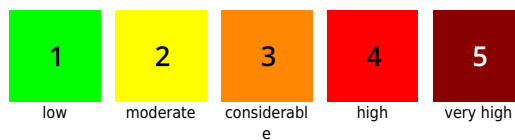
Silvretta, Rätikon Ost



Avalanche problems

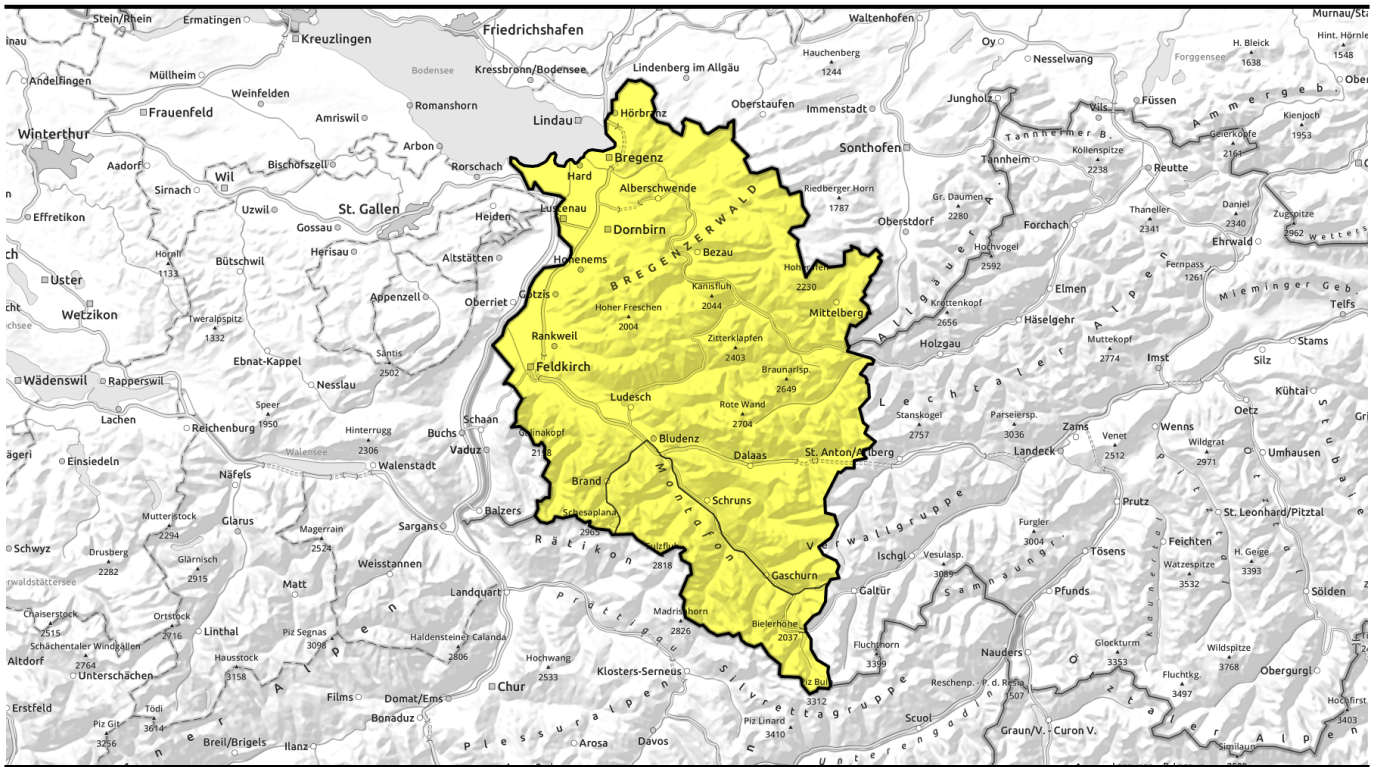


Danger ratings



Expositions

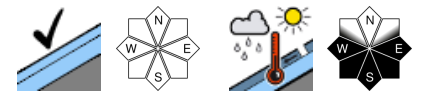




Günstige Tourenverhältnisse - Anstieg der Gefahr von Nassschneelawinen im Tagesverlauf



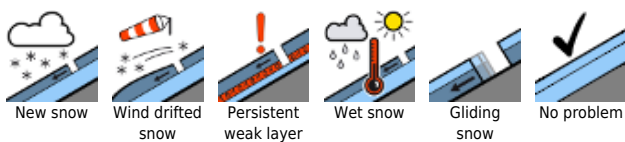
Verwall, Rätikon West, Bregenzerwaldgebirge, Allgäuer Alpen, Lechtalengebirge, Lechtal Alps



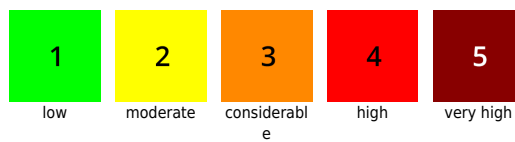
Silvretta, Rätikon Ost



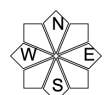
Avalanche problems



Danger ratings

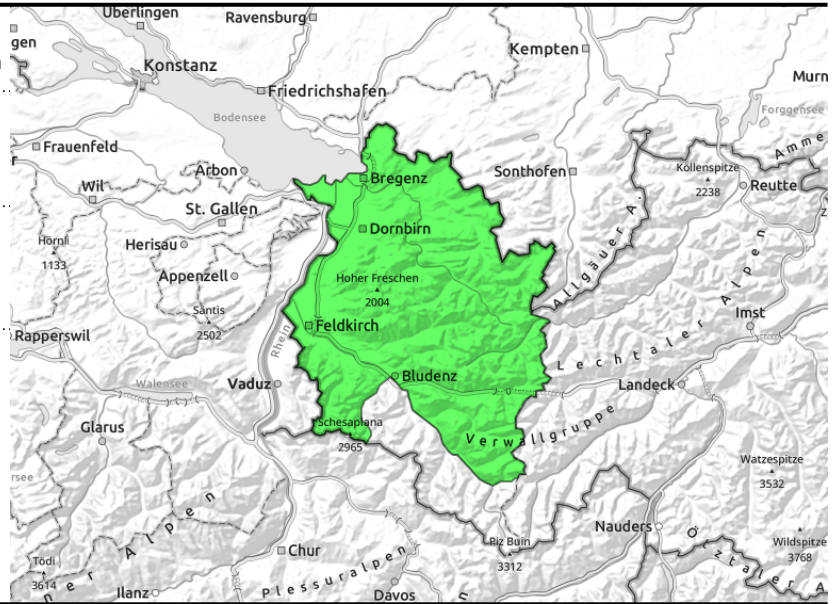


Expositions



13.03.2022, morning

Verwall, Rätikon West, Bregenzerwaldgebirge, Allgäuer Alpen, Lechquellengebirge, Lechtaler Alpen



favorable situation widespread



daytime danger cycle for wet-snow avalanches

Quite favorable conditions - daytime rise in danger of wet-snow avalanches

Overall quite favorable springtime conditions prevail, avalanche danger is low. Due to foehn impact, small fresh snowdrift accumulations have been generated, these are prone to triggering. Isolated avalanche prone locations occur on shady, steep ridgeline and pass slopes and behind protruberances, and in transitions from shallow to deep snow above 2400 m, particularly in laterally-skied steep terrain, mostly by large additional loading they can trigger locally. Due to daytime warmth and solar radiation, glide-snow avalanches are possible, especially below 2200 m on steep sunny slopes.

Snowpack structure

Due to SE/SW winds, generally small-sized fresh snowdrift accumulations have been generated. Especially in the classic foehn zones in the southern regions, these avalanche prone locations are more frequent. Bonding of drifts to the old snowpack is poor on shady slopes, they are prone to triggering (the upper part of the snowpack there is soft, faceted crystals blanket the surface). On sunny slopes a crust capable of bearing loads is evident, but this softens up during the daytime due to solar radiation and higher temperatures, which in turn enhances the gliding movement of the snowpack over very steep grass-covered slopes.

Weather

A sunny day in the mountains, accompanied by some high-altitude cirrus clouds. The foehn in classic foehn-exposed zones and on summits is the only disturbance. At 2000 m: -4 to +2 degrees. Mostly moderate S/SW winds at high altitudes.

Outlook

The Weather Service forecasts quite sunny weather for the next few days, with moderate foehn influence and milder temperatures, i.e. already springlike conditions. Low avalanche danger in the mornings, slight rise of wet-snow avalanche danger during the daytime.

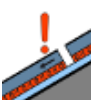
Avalanche problems



New snow



Wind drifted snow



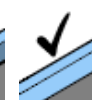
Persistent weak layer



Wet snow

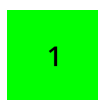


Gliding snow



No problem

Danger ratings



1

low



2

moderate



3

considerable



4

high



5

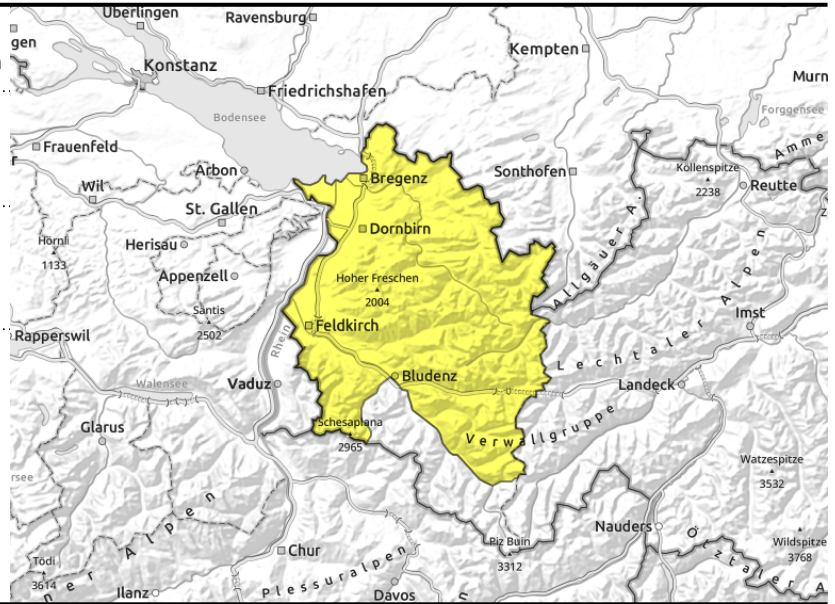
very high

Expositions



13.03.2022, afternoon

Verwall, Rätikon West, Bregenzerwaldgebirge, Allgäuer Alpen, Lechquellengebirge, Lechtaler Alpen



favorable situation widespread



daytime danger cycle for wet-snow avalanches

Quite favorable conditions - daytime rise in danger of wet-snow avalanches

Overall quite favorable springtime conditions prevail, avalanche danger is low. Due to foehn impact, small fresh snowdrift accumulations have been generated, these are prone to triggering. Isolated avalanche prone locations occur on shady, steep ridgeline and pass slopes and behind protruberances, and in transitions from shallow to deep snow above 2400 m, particularly in laterally-skied steep terrain, mostly by large additional loading they can trigger locally. Due to daytime warmth and solar radiation, glide-snow avalanches are possible, especially below 2200 m on steep sunny slopes.

Snowpack structure

Due to SE/SW winds, generally small-sized fresh snowdrift accumulations have been generated. Especially in the classic foehn zones in the southern regions, these avalanche prone locations are more frequent. Bonding of drifts to the old snowpack is poor on shady slopes, they are prone to triggering (the upper part of the snowpack there is soft, faceted crystals blanket the surface). On sunny slopes a crust capable of bearing loads is evident, but this softens up during the daytime due to solar radiation and higher temperatures, which in turn enhances the gliding movement of the snowpack over very steep grass-covered slopes.

Weather

A sunny day in the mountains, accompanied by some high-altitude cirrus clouds. The foehn in classic foehn-exposed zones and on summits is the only disturbance. At 2000 m: -4 to +2 degrees. Mostly moderate S/SW winds at high altitudes.

Outlook

The Weather Service forecasts quite sunny weather for the next few days, with moderate foehn influence and milder temperatures, i.e. already springlike conditions. Low avalanche danger in the mornings, slight rise of wet-snow avalanche danger during the daytime.

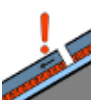
Avalanche problems



New snow



Wind drifted snow



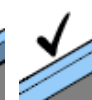
Persistent weak layer



Wet snow



Gliding snow



No problem

Danger ratings



1

low



2

moderate



3

considerable



4

high



5

very high

Expositions



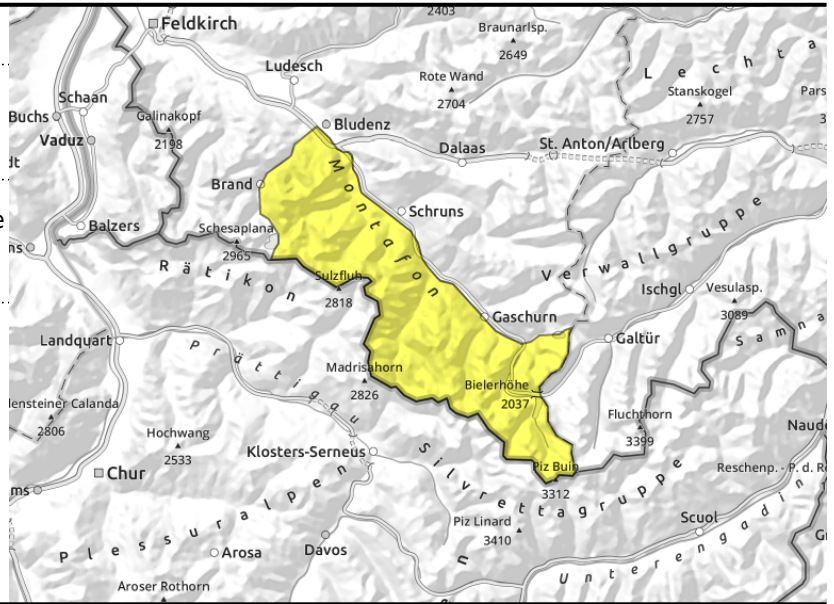
Silvretta, Rätikon Ost



steep shady ridge slopes above 2000m



daytime rise in danger of wet-snow avalanches



Quite favorable conditions - daytime rise in danger of wet-snow avalanches

Quite favorable conditions reign overall. Isolated avalanche prone locations occur on steep shady ridge slopes and behind protruberancees, as well as in transitions from shallow to deep snow above 2400 m, where isolated snowdrift accumulations generated over the last few days can still be triggered, mainly by large additional loading. Caution also urged towards large cornices. On steep sunny slopes, predominantly small-sized loose-snow avalanches can trigger naturally. As a result of daytime warming and solar radiation, glide-snow avalanches are possible on steep sunny slopes below 2200 m more than anywhere else.

Snowpack structure

Due to SE/SW winds, generally small-sized fresh snowdrift accumulations have been generated. Especially in the classic foehn zones in the southern regions, these avalanche prone locations are more frequent. Bonding of drifts to the old snowpack is poor on shady slopes, they are prone to triggering (the upper part of the snowpack there is soft, faceted crystals blanket the surface). On sunny slopes a crust capable of bearing loads is evident, but this softens up during the daytime due to solar radiation and higher temperatures, which in turn enhances the gliding movement of the snowpack over very steep grass-covered slopes.

Weather

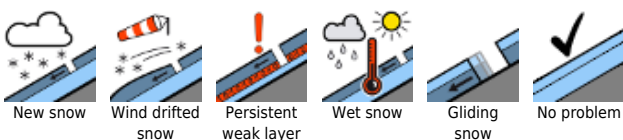
A sunny day in the mountains, accompanied by some high-altitude cirrus clouds. The foehn in classic foehn-exposed zones and on summits is the only disturbance. At 2000 m: -4 to +2 degrees. Mostly moderate S/SW winds at high altitudes.

Outlook

The Weather Service forecasts quite sunny weather for the next few days, with moderate foehn influence and milder temperatures, i.e. already springlike conditions. Low avalanche danger in the mornings, slight rise of wet-snow avalanche danger during the daytime.

Translated by Jeffrey McCabe, www.creativtrans.com

Avalanche problems



Danger ratings



Expositions

