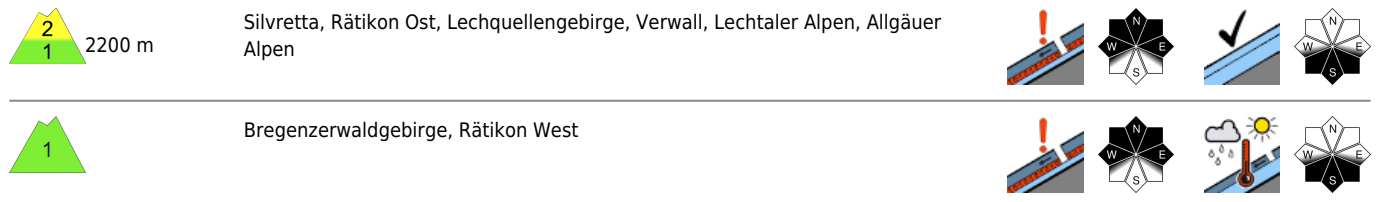
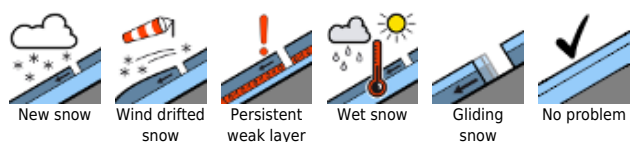


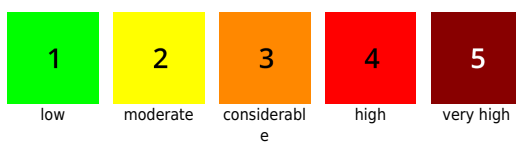
## Favorable situation widespread - Heed snowdrifts on steep shady slopes and in high-altitude ridge zones



**Avalanche problems**



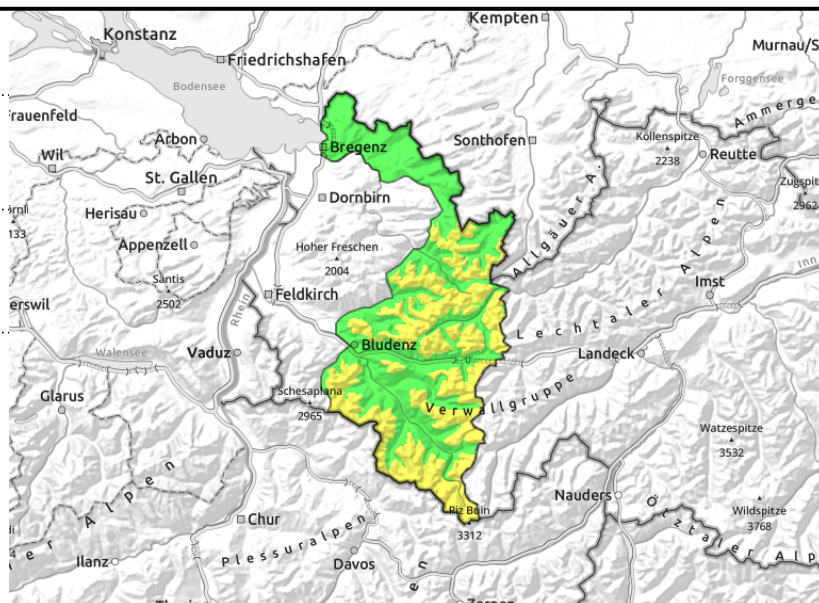
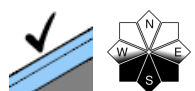
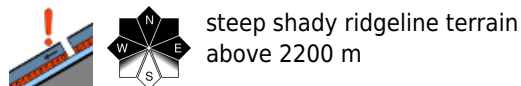
**Danger ratings**



**Expositions**



**Silvretta, Rätikon Ost, Lechquellengebirge, Verwall, Lechtaler Alpen, Allgäuer Alpen**



**Caution urged on steep, shady ridgeline slopes and transitions from shallow to deep snow**

Quite favorable conditions reign overall. Isolated avalanche prone locations occur on steep shady ridge slopes and behind protruberances, as well as in transitions from shallow to deep snow above 2200 m, where isolated snowdrift accumulations generated over the last few days can still be triggered, mainly by large additional loading. Caution also urged towards large cornices. On steep sunny slopes, predominantly small-sized loose-snow avalanches can trigger naturally. As a result of daytime warming and solar radiation, glide-snow avalanches are possible on steep sunny slopes below 2200 m more than anywhere else.

**Snowpack structure**

The night was star-studded and it was cold, so the south-facing slopes could form a melt-freeze crust (generally capable of bearing loads, on SE/SW facing slopes, not) On NE/N/NW slopes there is still loose snow. Above 2200m on north-facing slopes the snowpack is expansively metamorphosed (faceted). Near ridges on very steep slopes and in transitions from shallow to deep snow above 2200 m on W/N/E facing slopes there are isolated weak layers embedded inside the snowpack which are prone to triggering. In the old snowpack at high altitudes on shady slopes there are also weak layers locally, but these are unlikely to trigger. At intermediate altitudes the snowpack is moist, which enhances the gliding movement of the entire snowpack over very steep grass-covered slopes.

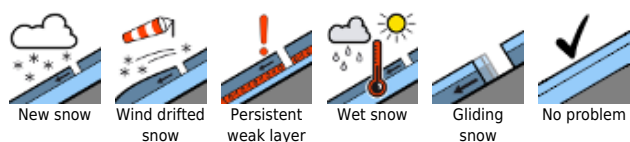
**Weather**

Sunshine and low temperatures due to a NE air current, colder than usual for this juncture of the season. In wind-protected zones the March sun is powerfully warm. At 2000 m: -8 degrees. Moderate NE winds at high altitude.

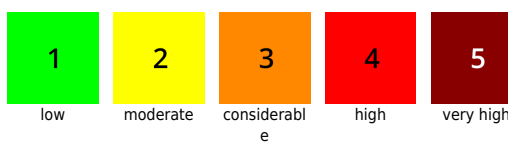
**Outlook**

The Weather Service forecast fine, sunny weather until next Wednesday. The favorable avalanche situation will persist.

**Avalanche problems**



**Danger ratings**



**Expositions**



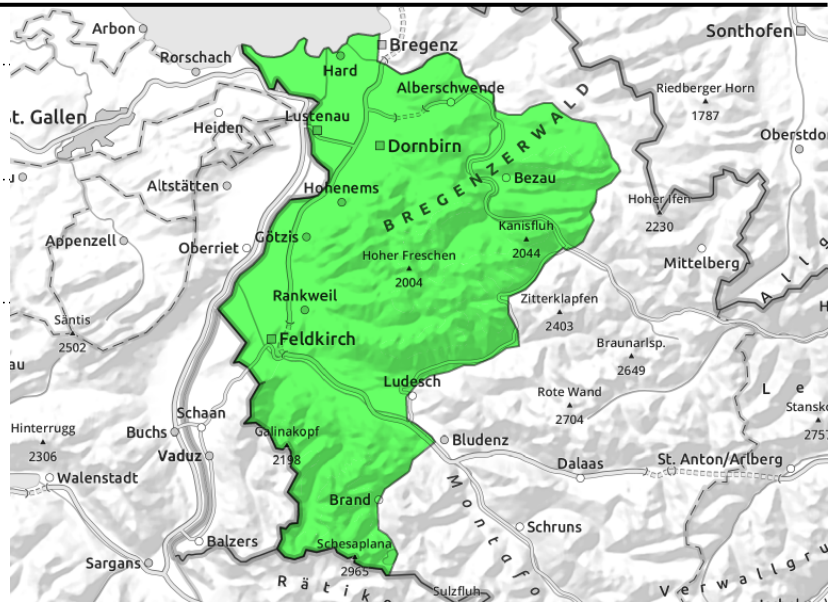
**Bregenzerwaldgebirge, Rätikon West**



steep, shady ridgeline terrain above 2200m



due to warmth and solar radiation, glide snowslides are possible on steep sunny slopes



**Caution urged in steep, shady ridgeline terrain and transitions from shallow to deep snow**

Quite favorable conditions reign overall. Isolated avalanche prone locations occur on steep shady ridge slopes and behind protruberances, as well as in transitions from shallow to deep snow above 2200 m, where isolated snowdrift accumulations generated over the last few days can still be triggered, mainly by large additional loading. Caution also urged towards large cornices. On steep sunny slopes, predominantly small-sized loose-snow avalanches can trigger naturally. As a result of daytime warming and solar radiation, glide-snow avalanches are possible on steep sunny slopes below 2200 m more than anywhere else.

**Snowpack structure**

The night was star-studded and it was cold, so the south-facing slopes could form a melt-freeze crust (generally capable of bearing loads, on SE/SW facing slopes, not) On NE/N/NW slopes there is still loose snow. Above 2200m on north-facing slopes the snowpack is expansively metamorphosed (faceted). Near ridges on very steep slopes and in transitions from shallow to deep snow above 2200 m on W/N/E facing slopes there are isolated weak layers embedded inside the snowpack which are prone to triggering. In the old snowpack at high altitudes on shady slopes there are also weak layers locally, but these are unlikely to trigger. At intermediate altitudes the snowpack is moist, which enhances the gliding movement of the entire snowpack over very steep grass-covered slopes.

**Weather**

Sunshine and low temperatures due to a NE air current, colder than usual for this juncture of the season. In wind-protected zones the March sun is powerfully warm. At 2000 m: -8 degrees. Moderate NE winds at high altitude.

**Outlook**

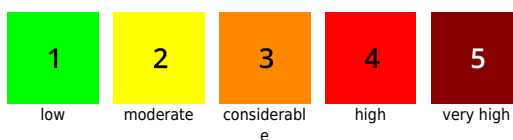
The Weather Service forecast fine, sunny weather until next Wednesday. The favorable avalanche situation will persist.

Translated by Jeffrey McCabe, [www.creativtrans.com](http://www.creativtrans.com)

**Avalanche problems**



**Danger ratings**



**Expositions**

