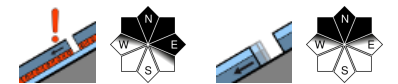


Favorable situation widespread - Heed snowdrifts on steep shady slopes and in high-altitude ridge zones



Silvretta, Rätikon Ost, Rätikon West, Lechquelleengebirge, Verwall, Lechtaler Alpen, Allgäuer Alpen, Bregenzerwaldgebirge



Avalanche problems



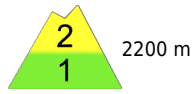
Danger ratings



Expositions

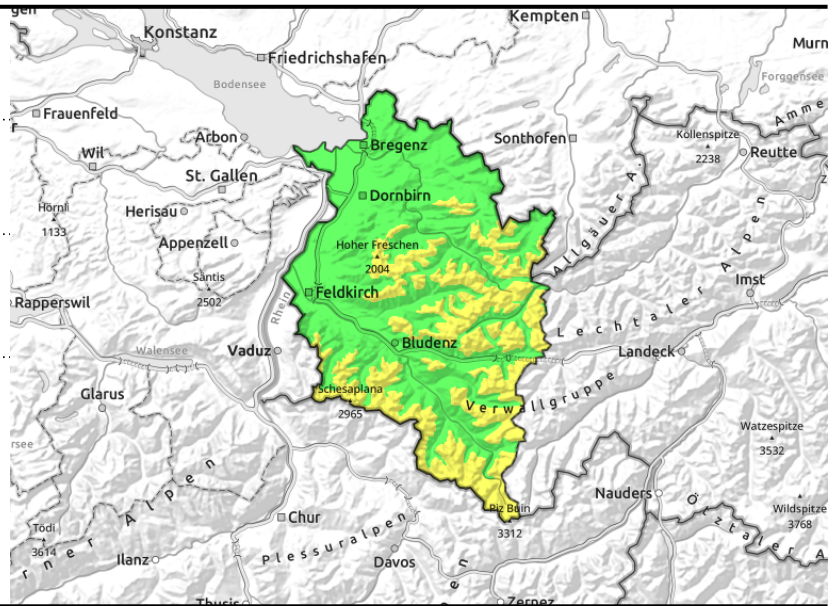


Silvretta, Rätikon Ost, Rätikon West, Lechquellengebirge, Verwall, Lechtaler Alpen, Allgäuer Alpen, Bregenzerwaldgebirge



steep shady ridgeline terrain above 2200 m

daytime rise in gliding snow due to warmth and solar radiation



Heed snowdrifts in shady, steep ridgeline terrain

Quite favorable conditions reign overall. Isolated avalanche prone locations occur on steep shady ridge slopes and behind protruberancees, as well as in transitions from shallow to deep snow above 2200 m, where isolated snowdrift accumulations generated over the last few days can still be triggered, mainly by large additional loading. On steep sunny slopes, predominantly small-sized loose-snow avalanches can trigger naturally. As a result of daytime warming and solar radiation, glide-snow avalanches are possible on steep sunny slopes below 2200 m more than anywhere else.

Snowpack structure

On steep south-facing slopes a thin melt-freeze crust formed last night, but is not capable of bearing loads. On shady NE/N/NW facing slopes there is still loose snow, mostly unbonded. Older generally small layers of snowdrifts are in isolated cases still prone to triggering, particularly on steep shady slopes and in ridgeline zones above 2200 m. Inside the old snowpack on high altitude shady slopes there are still weak layers. In the interim these are well covered and unlikely to trigger. At intermediate altitudes the snowpack is moist, which enhances the gliding movement of the entire snowpack over very steep grass-covered slopes.

Weather

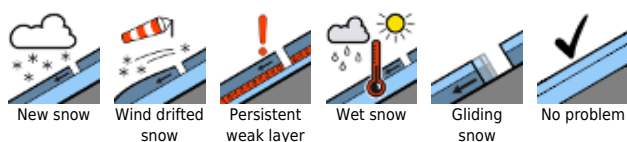
Thursday will bring sunny and not-especially-cold weather to the mountains. A few high-altitude clouds will pass through at midday but not disturb. Temperature at 2000 m: -1 degree. Light to moderate northerly winds at high altitudes.

Outlook

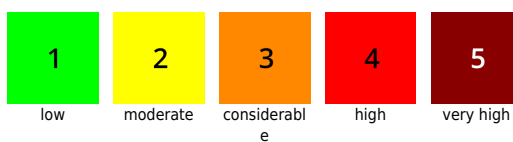
The Weather Service forecasts pleasant, sunny weather all week long. The favorable avalanche situation will persist.

Translated by Jeffrey McCabe, www.creativtrans.com

Avalanche problems



Danger ratings



Expositions

