

## Heed snowdrifts in steep ridgeline terrain

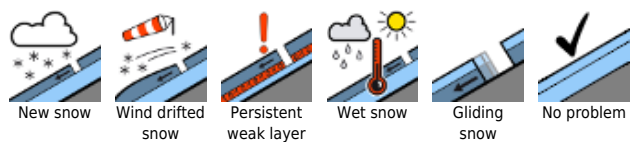


2200 m

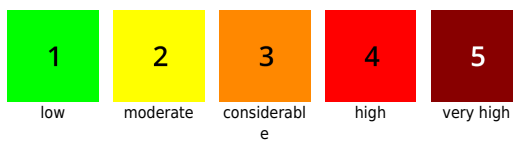
Silvretta, Rätikon Ost, Rätikon West, Lechquellengebirge, Verwall, Lechtaler Alpen, Allgäuer Alpen, Bregenzerwaldgebirge



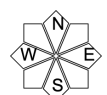
### Avalanche problems



### Danger ratings



### Expositions

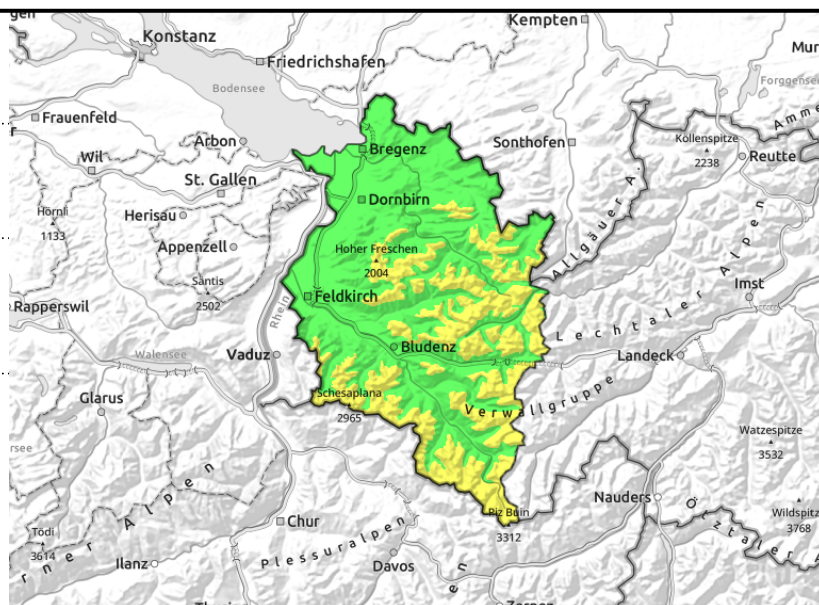


**Silvretta, Rätikon Ost, Rätikon West, Lechquellengebirge, Verwall, Lechtaler Alpen, Allgäuer Alpen, Bregenzerwaldgebirge**



steep ridgeline terrain, pass areas, behind protruberances, wind-loaded gullies and bowls

transitions from shallow to deep snow



## Heed snowdrifts in shady, steep ridgeline terrain

The snowdrift accumulations of the last few days are still prone to triggering in places and can be triggered even by the weight of one sole skier. Avalanche prone locations occur in shady, steep ridgeline terrain and behind protruberances, as well as in transitions from shallow to deep snow above approximately 2200m. The layers of drifts are generally covered, making them difficult to recognize. In high alpine regions the danger zones are more frequent. In sunny, steep terrain small naturally triggered avalanches can trigger. Due to solar radiation and daytime warmth, glide-snow avalanches are possible below about 2000 m, particularly on steep sunny slopes.

### Snowpack structure

Nighttime skies were cold and star-studded. Due to nocturnal outgoing longwave radiation a thin melt-freeze crust formed on steep south-facing slopes which are generally not capable of bearing loads. On shady NE/N/NW slopes there is still loose snow, mostly unbonded. Older snowdrift accumulations are often still prone to triggering, covered and thus, hard to spot. Particularly on shady and east-facing slopes at high altitudes, these are poorly bonded with the old snowpack. Inside the old snowpack on high altitude shady slopes there are still weak layers. In the interim these are well covered and unlikely to trigger. At intermediate altitudes the snowpack is moist, which enhances the gliding movement of the entire snowpack over very steep grass-covered slopes.

### Weather

Another gorgeous day, weatherwise. Unimpeded sunshine from early until late, somewhat milder, and the winds noticeably weaker than yesterday. Temperature at 2000 m: -11 to -4 degrees. Mostly light N/NE winds at high altitude.

### Outlook

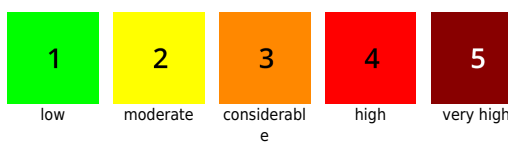
Starting Wednesday afternoon the high-pressure front conditions will weaken. Avalanche danger is not expected to change significantly.

Translated by Jeffrey McCabe, [www.creativtrans.com](http://www.creativtrans.com)

#### Avalanche problems



#### Danger ratings



#### Expositions

