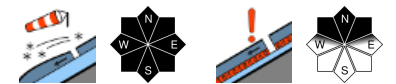


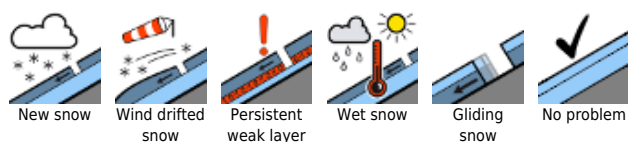
## Considerable avalanche danger widespread due to fresh snow and storm winds



Silvretta, Rätikon Ost, Rätikon West, Lechquelleengebirge, Verwall, Lechtaler Alpen, Bregenzerwaldgebirge, Allgäuer Alpen



### Avalanche problems



### Danger ratings



### Expositions



**Silvretta, Rätikon Ost, Rätikon West, Lechquellengebirge, Verwall, Lechtaler Alpen, Bregenzerwaldgebirge, Allgäuer Alpen**



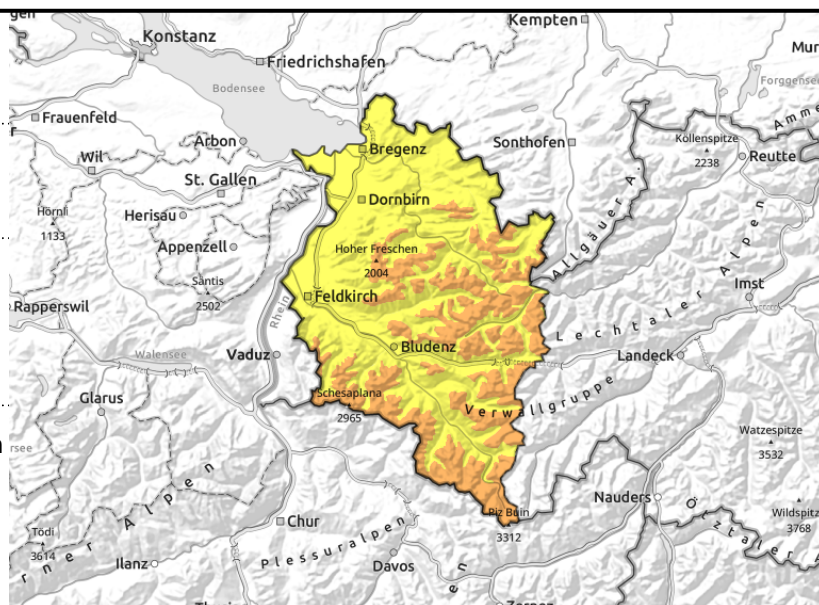
forestline



fresh snow/drifts also on steep slopes distant from ridges, behind protruberances, in gullies, bowls



above 2000 m, transitions from shallow to deep snow



## Fresh snow + fresh snowdrifts prone to triggering. Naturally triggered avalanches possible.

Due to new snow and storm winds, avalanche danger above the treeline is considerable. The fresh snow and freshly generated drifts can be triggered by one single skier/boarder in all aspects. Avalanche prone locations are found near to and distant from ridges on steep slopes, behind protruberances, in wind-loaded gullies and bowls. Mostly medium-sized avalanches, in isolated cases large-sized. Activities in backcountry demand experience in assessing avalanche risks on-site. Weak layers in the old snow can be triggered by one sole skier/boarder, particularly in Rätikon, Silvretta and Verwall on N/NE facing slopes, especially above 2000 m on seldom-frequented backcountry terrain in transitions from shallow to deep snow, e.g. at entries into gullies and bowls. Superficially triggered avalanches can fracture down to deeper layers and then grow to large size. In addition, at intermediate altitudes on smooth, steep grass-covered slopes small-to-medium glide-snow avalanches are possible.

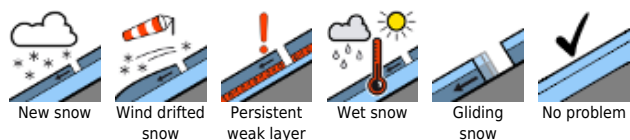
### Snowpack structure

The snowpack shows major signs of wind impact: exposed zones are windblown, encrusted; gullies and bowls are filled to the brim with drifts. Only on leeward slopes well below ridgelines, in gullies and bowls is there still soft snow. Atop of this the cold new snow was deposited on Monday night amid storm winds (with gusts at gale strength) and massive snow transport. Graupel was also in the mixture. The fresh snowdrift accumulations are prone to triggering, can easily be released. Over the last 24 hours there has been 30 cm in Rätikon 35 cm in Silvretta, 40 cm in Verwall, Arlberg and Allgäu Alps registered; in Bregenzerwald maximum 25 cm, from place to place more.

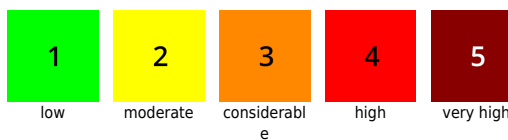
In Rätikon, Verwall and Silvretta there are weak layers embedded inside the snowpack. Danger zones occur where the snow is shallow and in transitions from shallow to deep snow, particularly in seldom frequented backcountry terrain. Triggered avalanches can fracture down to deeper layers and grow to large size.

At intermediate altitudes the snowpack is moist, which furthers gliding movement over smooth, grassy slopes.

### Avalanche problems



### Danger ratings



### Expositions



**22.02.2022**

### Weather

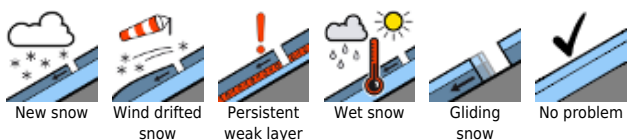
Conditions will settle and quiet during the course of the day, but it will remain windy. The snowfall will begin to taper off this morning, come to an end this afternoon. Clouds and fog will persist, but there will be windows of sunshine. Temperatures will rise this afternoon. At 2000 m: from -8 to -4 degrees. Strong to stormy NW winds.

### Outlook

On Tuesday night another (weak) perturbation will reach us. After residual clouds have dispersed it will turn sunny during the daytime on Wednesday. Avalanche danger will gradually recede.

Translated by Jeffrey McCabe, [www.creativtrans.com](http://www.creativtrans.com)

#### Avalanche problems



#### Danger ratings



#### Expositions

