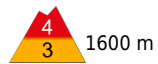


## High avalanche danger, treacherous situation, fresh snow + storm winds



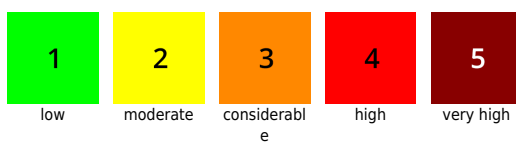
Silvretta, Rätikon Ost, Rätikon West, Bregenzwaldgebirge, Lechquellengebirge, Verwall, Lechtaler Alpen, Allgäuer Alpen



### Avalanche problems



### Danger ratings



### Expositions

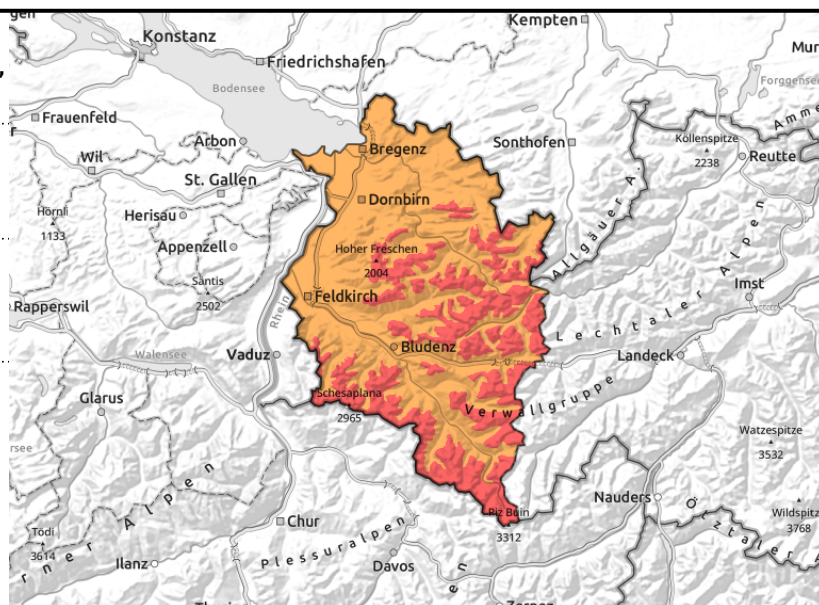


**Silvretta, Rätikon Ost, Rätikon West, Bregenzerwaldgebirge, Lechquellengebirge, Verwall, Lechtaler Alpen, Allgäuer Alpen**



at ridges, wind-loaded steep slopes, gullies, bowls

over 1600m



## Delicate situation, high danger in outlying terrain

As a result of fresh snow and stormy winds, the avalanche situation has become more threatening. Wide-ranging snowdrift accumulations are the main danger. Avalanches can be triggered by minimum additional loading or release naturally. Also remote triggerings are possible. Avalanches can sweep away the old snowpack and grow to large size. Avalanche prone locations lie in all aspects above 1600 m and are difficult to recognize due to poor visibility. Cracks in the snowpack surface and 'whumpf' noises are alarm signals, indicators of danger. Activities in backcountry away from secured ski runs demand experience in assessing avalanche risks on-site and knowledge of the landscape. The inexperienced should not leave the ski pistes. In regions where snowfall is heavy, glide-snow avalanches and slides are possible.

### Snowpack structure

During the night up to 40 cm of fresh snow was registered. As a result of storm-strength W/S winds - gales often reaching 150 km/hr - huge amounts of snow were transported, generating fresh, trigger-sensitive snowdrift accumulations. Bonding to the snow beneath them is poor, they are prone to triggering. Particularly on west-facing, north-facing and east-facing high altitude slopes, the drifts were deposited atop soft layers, bonding is poor, easy to trigger. During the course of the day the snowdrift accumulations will continue to expand. Inside the snowpack, particularly on shady slopes, there are loose-snow layers and layers of graupel which can be triggered, mostly by large additional loading.

### Weather

Terrible mountain weather: as a result of icy-cold storm-strength NW winds, moist air masses are penetrating the mountain regions. Mostly light snowfall during the day from compact clouds. Cold. Temperature at 2000 m: -9 degrees. Powerful storms from north-to-northwest, slackening off somewhat during the course of the day.

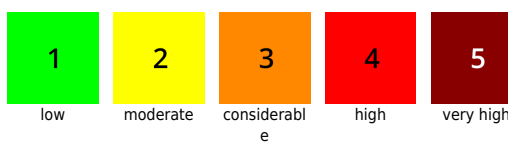
### Outlook

As a result of storm winds, snowdrifts are accumulating more and more. Avalanche situation is treacherous.

#### Avalanche problems



#### Danger ratings



#### Expositions



**07.02.2022**

Translated by Jeffrey McCabe, [www.creativtrans.com](http://www.creativtrans.com)

---

**Avalanche problems**



New snow



Wind drifted  
snow



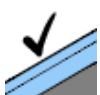
Persistent  
weak layer



Wet snow



Gliding  
snow



No problem

**Danger ratings**



1

low



2

moderate



3

considerabl  
e



4

high



5

very high

**Expositions**

