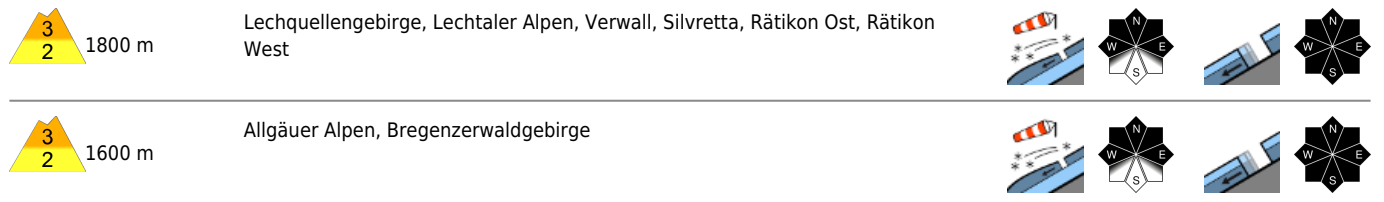
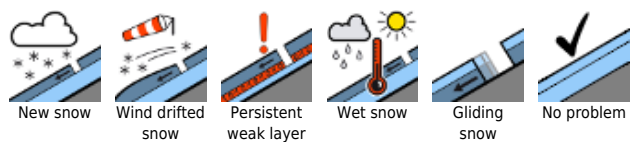


Attention winter sports enthusiasts: considerable danger widespread !



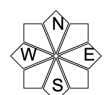
Avalanche problems



Danger ratings



Expositions



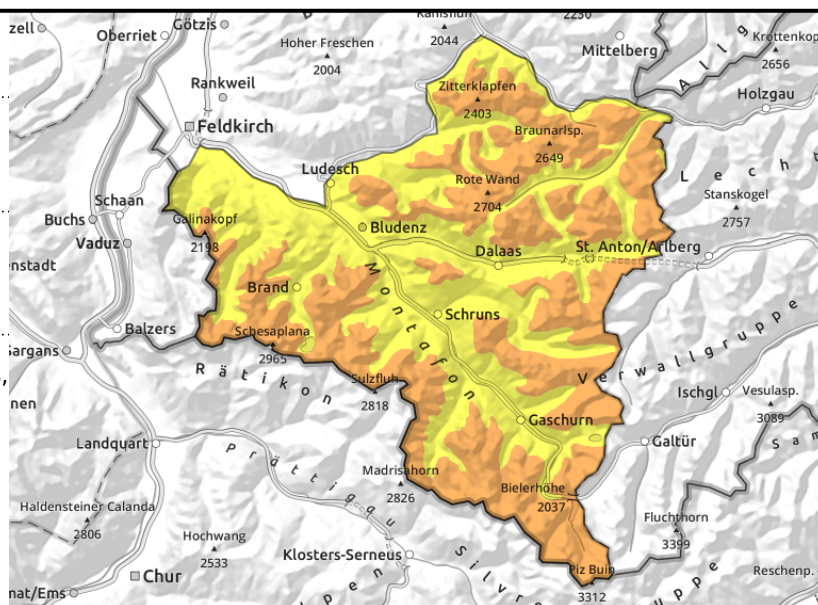
Lechquellengebirge, Lechtaler Alpen, Verwall, Silvretta, Rätikon Ost, Rätikon West



wind-loaded steep slopes, gullies, bowls



isolated on steep grassy slopes, low and intermediate altitudes



Delicate situation, considerable avalanche danger, in outlying terrain

Snowdrift accumulations behind protruberances and in wind-loaded gullies and bowls are still prone to triggering. Frequency and size of avalanche prone locations increase with ascending altitude. One sole skier/boarder can trigger a slab avalanche. Activities in backcountry require experience in assessing avalanches on-site and knowledge of the landscape. Glide cracks and whumpf noises are indicators of danger. The inexperienced should not leave the secured ski pistes. At low and intermediate altitudes, particularly on steep grass-covered slopes, isolated glide-snow avalanches are possible. Caution urged below glide cracks.

Snowpack structure

The fresh snow and drifts of the last few days was able to further settle and consolidate due to rising temperatures. Bonding to the often loose layers of the old snowpack, particularly on shady slopes, and to the loose snow inside the fresh snow or embedded graupel deteriorates with ascending altitude. Exposed zones are often windblown, gullies and bowls are filled to the brim with drifts. The old snowpack is generally well consolidated and for the most part stable. Weak layers beneath melt-freeze crusts at mid-level of the snowpack are triggerable only seldom. Yesterday, a great many avalanches were triggered, both artificially and by skiers/boarders, some of them were large-sized. This confirms the heightened proneness to triggering of the snowpack. Many naturally triggered avalanches were observed the day before, particularly on steep shady slopes.

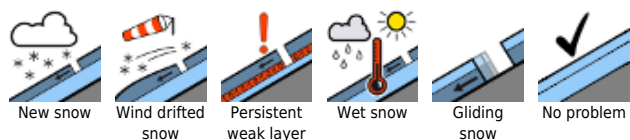
Weather

In the furthestmost northern regions, initially there will be cloud passing through, dispersing in the afternoon. In the southern massifs, on the other hand, it will be predominantly sunny. Temperature at 2000 m: 0 degrees. Brisk westerly winds at high altitude, otherwise blowing at moderate strength.

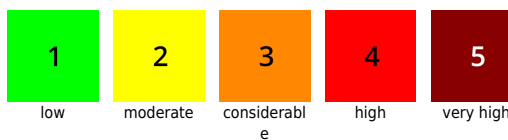
Outlook

A bit of snowfall is expected during the night tonight. On Saturday, sunshine will rapidly take over. Avalanche danger levels are not expected to change as yet.

Avalanche problems



Danger ratings



Expositions



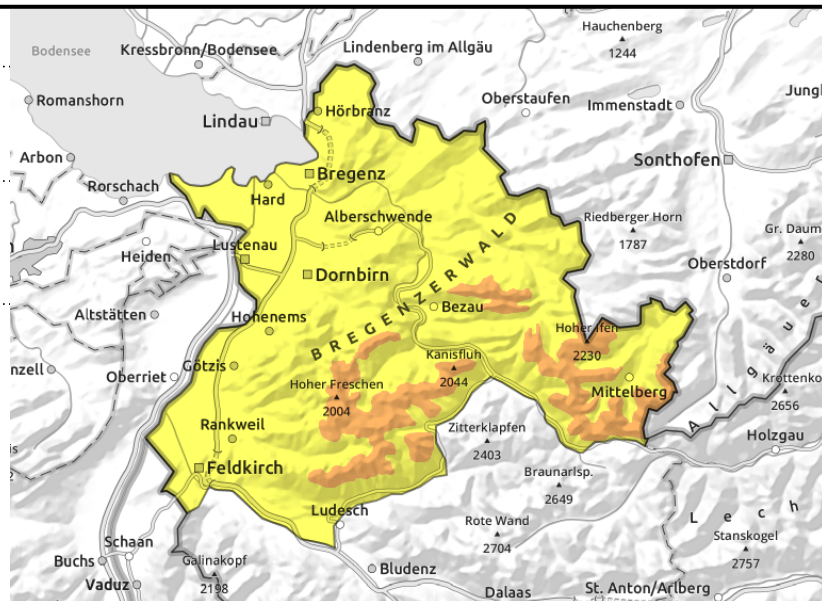
Allgäuer Alpen, Bregenzerwaldgebirge



wind-loaded steep slopes, gullies, bowls



steep grassy slopes, hillsides, low and intermediate altitudes



Delicate situation, considerable avalanche danger, in outlying terrain

Snowdrift accumulations behind protruberances and in wind-loaded gullies and bowls are still prone to triggering. Frequency and size of avalanche prone locations increase with ascending altitude. One sole skier/boarder can trigger a slab avalanche. Activities in backcountry require experience in assessing avalanches on-site and knowledge of the landscape. Glide cracks and whumpf noises are indicators of danger. The inexperienced should not leave the secured ski pistes. At low and intermediate altitudes, particularly on steep grass-covered slopes, isolated glide-snow avalanches are possible. Caution urged below glide cracks.

Snowpack structure

The fresh snow and drifts of the last few days was able to further settle and consolidate due to rising temperatures. Bonding to the often loose layers of the old snowpack, particularly on shady slopes, and to the loose snow inside the fresh snow or embedded graupel deteriorates with ascending altitude. Exposed zones are often windblown, gullies and bowls are filled to the brim with drifts. The old snowpack is generally well consolidated and for the most part stable. Weak layers beneath melt-freeze crusts at mid-level of the snowpack are triggerable only seldom. Yesterday, a great many avalanches were triggered, both artificially and by skiers/boarders, some of them were large-sized. This confirms the heightened proneness to triggering of the snowpack. Many naturally triggered avalanches were observed the day before, particularly on steep shady slopes.

Weather

In the furthestmost northern regions, initially there will be cloud passing through, dispersing in the afternoon. In the southern massifs, on the other hand, it will be predominantly sunny. Temperature at 2000 m: 0 degrees. Brisk westerly winds at high altitude, otherwise blowing at moderate strength.

Outlook

A bit of snowfall is expected during the night tonight. On Saturday, sunshine will rapidly take over. Avalanche danger levels are not expected to change as yet.

Translated by Jeffrey McCabe, www.creativtrans.com

Avalanche problems



Danger ratings



Expositions

