

## High avalanche danger persists at high altitudes

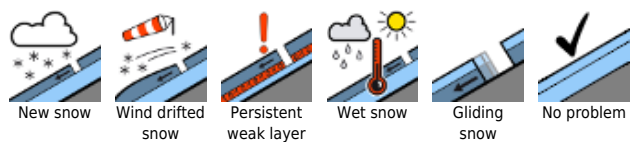


2000 m

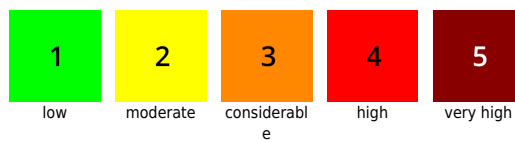
Lechquellengebirge, Lechtaler Alpen, Verwall, Silvretta, Rätikon Ost, Rätikon West, Allgäuer Alpen, Bregenzerwaldgebirge



### Avalanche problems



### Danger ratings



### Expositions



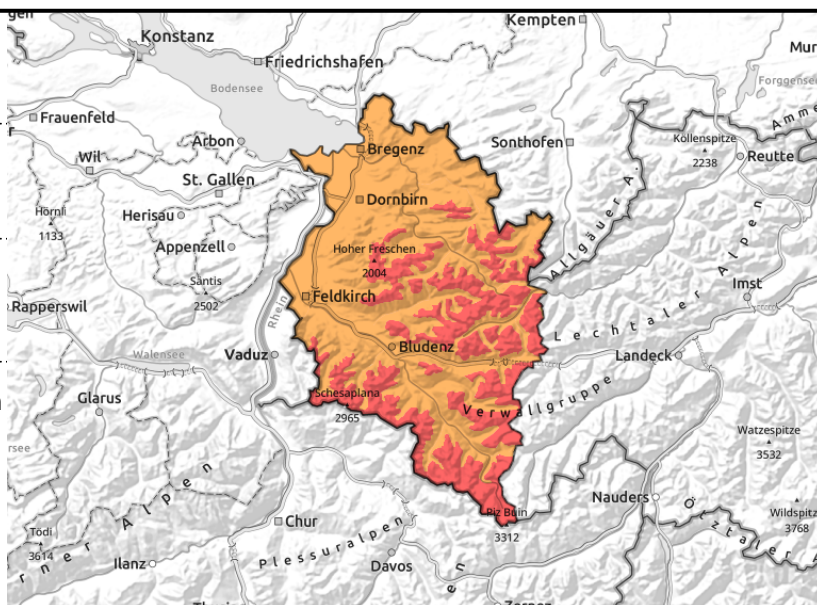
**Lechquellengebirge, Lechtaler Alpen, Verwall, Silvretta, Rätikon Ost, Rätikon West, Allgäuer Alpen, Bregenzerwaldgebirge**



wind-loaded steep slopes, gullies, bowls



more glide-snow avalanches on steep grassy slopes at low and intermediate altitudes, wet slides on sunny slopes



## Treacherous situation, high danger, in backcountry

New snow and new snowdrift accumulations behind protruberances and in wind-loaded gullies and bowls are prone to triggering. Frequency and size of the avalanche prone locations increase with ascending altitude. Slab avalanches can easily be released, even by the weight of one sole skier/boarder. Activities in backcountry demand restraint and great experience in assessing avalanche risks on-site. Inexperienced persons should not leave the secured ski pistes. Also naturally triggered medium-to-large sized avalanches are possible. If avalanches fracture down to deeper layers they can grow to large size and endanger exposed zones. As a result of the higher temperatures and the rainfall, increasingly frequent glide-snow avalanches and wet slides are possible on steep grass-covered slopes at low altitudes.

### Snowpack structure

Since yesterday there was another 25-30 cm of fresh snow registered widespread. Amid frequently storm-strength winds, the snow was transported. New snow and drifts from recent days was able to settle up to intermediate altitudes and increasingly consolidate due to higher temperatures. Bonding to the old snowpack on shady slopes and between the new layers themselves or the embedded graupel worsens with ascending altitude. The old snowpack is generally well consolidated and stable. Weak layers beneath the melt-freeze crusts at mid-level inside the snowpack can ordinarily be triggered only seldom. Yesterday triggerings of slab avalanches occurred both artificially with explosives, and were unleashed by winter sports enthusiasts. Naturally triggered avalanches could not be observed due to poor visibility.

### Weather

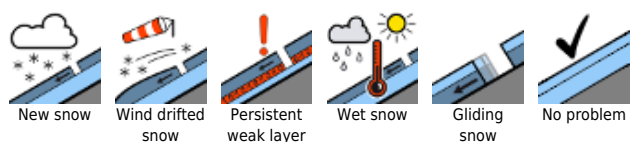
Compact high-altitude clouds, mostly above summit altitude. Zero-degree level at nearly 2500 m. Temperature at 2000 m: -3 to +4 degrees. Moderate to strong westerly winds at high altitude.

### Outlook

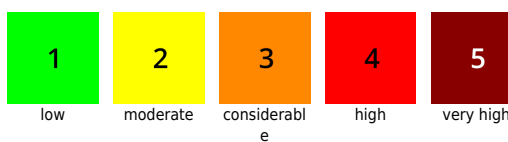
Skies will clear tonight. Friday will become sunny in the course of the day. Avalanche danger will slowly decrease.

Translated by Jeffrey McCabe, [www.creativtrans.com](http://www.creativtrans.com)

#### Avalanche problems



#### Danger ratings



#### Expositions

