

REPORT UPDATE - Abundant snowfall plus wind: high avalanche danger widespread above the treeline



Lechquellengebirge, Lechtaler Alpen, Verwall, Silvretta, Rätikon Ost, Rätikon West, Allgäuer Alpen, Bregenzerwaldgebirge



Avalanche problems



Danger ratings



Expositions



Lechquellengebirge, Lechtaler Alpen, Verwall, Silvretta, Rätikon Ost, Rätikon West, Allgäuer Alpen, Bregenzerwaldgebirge



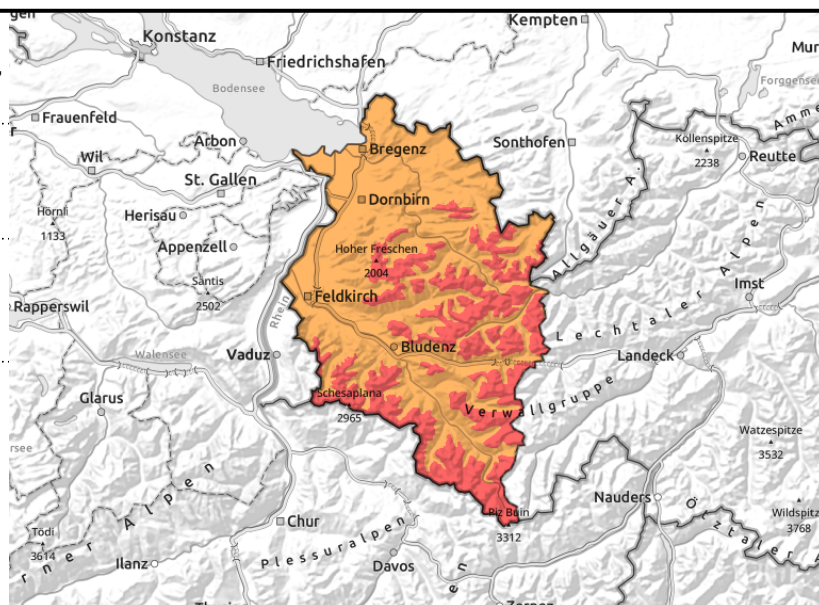
forestline



wind-loaded steep slopes, gullies, bowls



critical amount of new snow



Treacherous situation, high danger, in backcountry

New snow and far-reaching snowdrift accumulations are the main danger. Frequency and size of the avalanche prone locations increase with ascending altitude. Fresh drifts behind protruberances, in wind-loaded gullies and bowls are trigger-sensitive and can easily be released, even by the weight of one sole skier/boarder. Activities in backcountry demand restraint and great experience in assessing avalanche risks on-site. Also naturally triggered medium-to-large sized avalanches are possible. If avalanches fracture down to deeper layers they can grow to large size and endanger exposed zones. As a result of higher temperatures and rainfall, increasingly frequent glide-snow avalanches and wet slides are possible on steep grass-covered slopes at low altitudes.

Snowpack structure

Since yesterday there has been 25-30 cm of fresh snow registered widespread, 40 cm on Hochtannberg and Arlberg. Amid frequently storm-strength winds, the snow was transported intensively, and deposited on shady slopes, often atop loose old snowpack layers, bonding with them poorly. The old snowpack is generally well consolidated and stable. Weak layers beneath the melt-freeze crusts at mid-level inside the snowpack can ordinarily be triggered only by large additional loading.

Weather

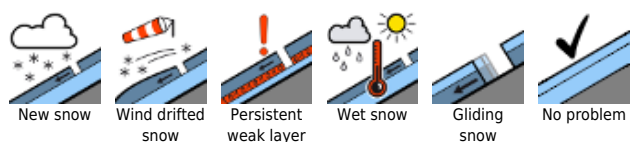
The precipitation continues. Again, most intensive snowfall is in Bregenzerwald and Arlberg region. It is being massively transported by winds. The snowfall level lies at about 1000 m. Temperature at 2000 m: -6 degrees. Strong NW winds at high altitude.

Outlook

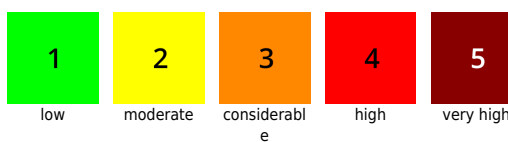
The snowfall will taper off and terminate during the night tonight. On Thursday skies will be mostly overcast. The avalanche situation remains critical in outlying terrain. On steep, smooth grass-covered slopes, increasingly frequent glide-snow avalanches are possible.

Translated by Jeffrey McCabe, www.creativtrans.com

Avalanche problems



Danger ratings



Expositions

