

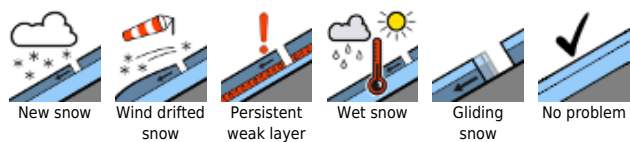
Marked increase in avalanche danger due to fresh snow+storm winds



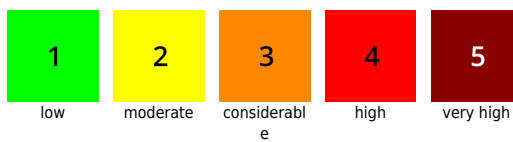
Bregenzerwaldgebirge, Allgäuer Alpen, Lechtalengebirge, Rätikon West, Rätikon Ost, Silvretta, Verwall



Avalanche problems

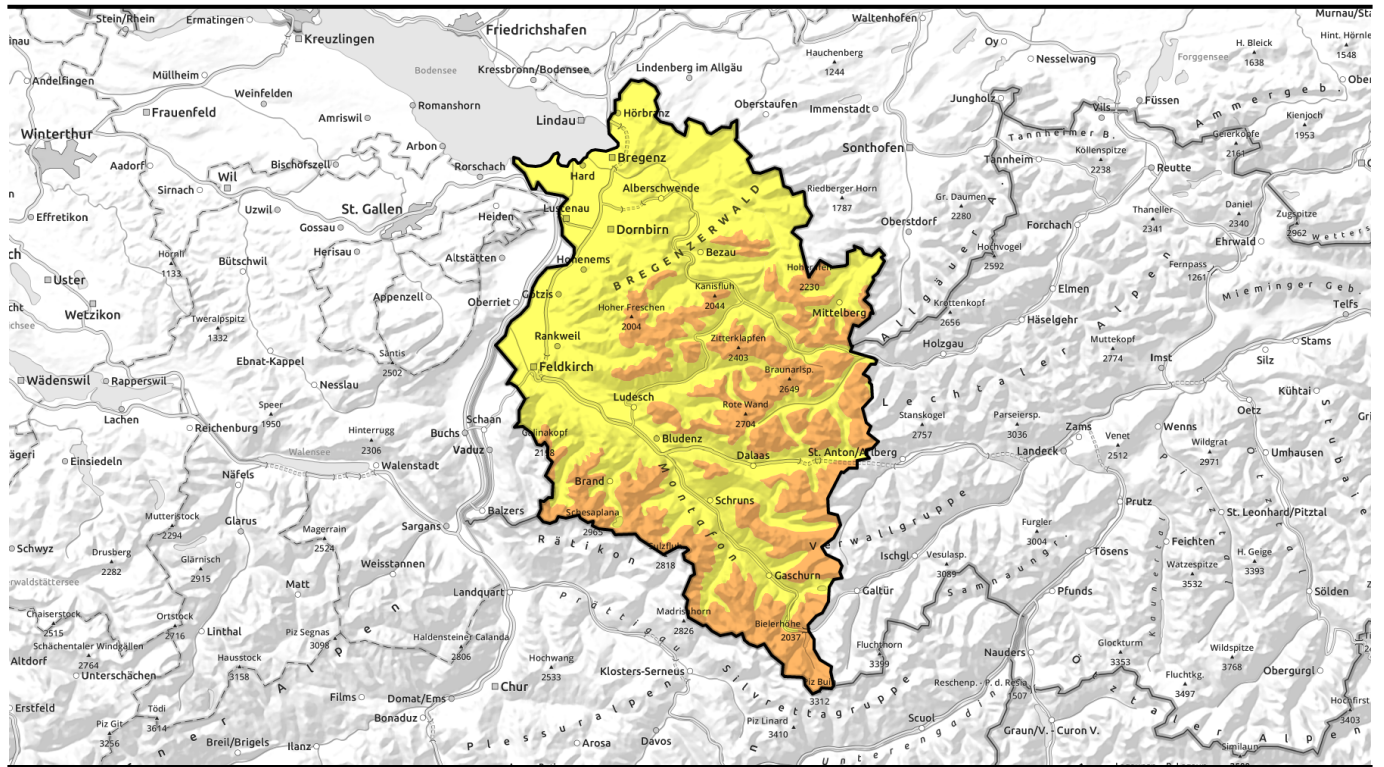


Danger ratings



Expositions





mit Neuschnee und Sturm im Tagesverlauf deutlicher Anstieg der Lawinengefahr

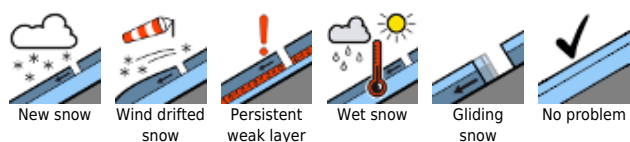


Bregenzerwaldgebirge, Allgäuer Alpen, Lechtaler Alpen, Lechquellengebirge, Rätikon West, Rätikon Ost, Silvretta, Verwall

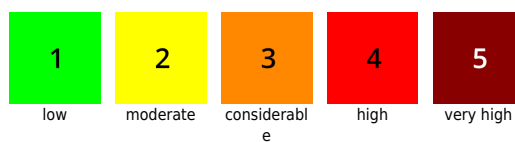


forestline

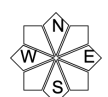
Avalanche problems



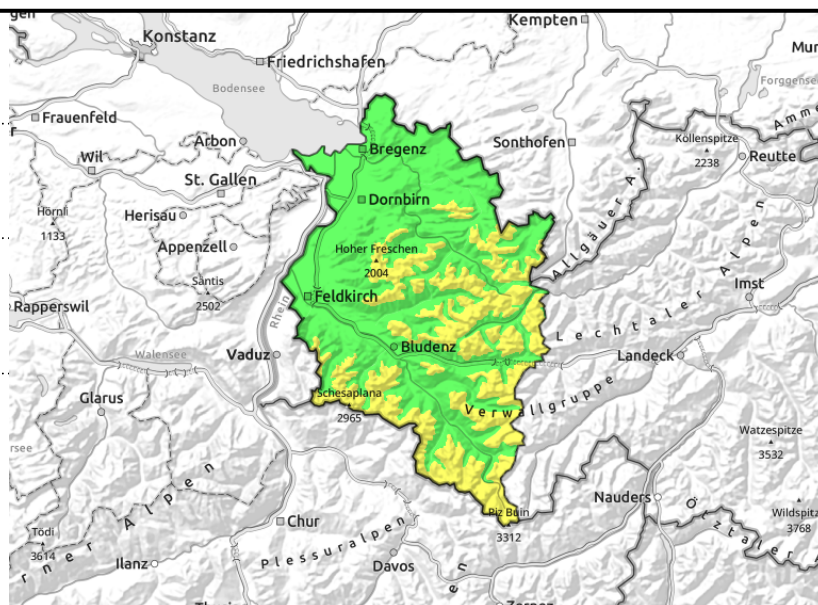
Danger ratings



Expositions



Bregenzerwaldgebirge, Allgäuer Alpen, Lechtaler Alpen, Lechquellengebirge, Rätikon West, Rätikon Ost, Silvretta, Verwall



size and spread increasing in gullies, bowls, behind protruberances



critical mass of new snow during the day

Significant rise in avalanche danger during the daytime due to new snow/snowdrifts

During the morning moderate danger prevails at high altitudes. As a consequence of fresh snow and storm-strength winds, danger will increase to “considerable” (Danger Level 3) particularly above the timberline. Freshly generated snowdrift accumulations and the critical mass of fresh fallen snow are the main dangers. Frequency and size of the avalanche prone locations increase with ascending altitude. Fresh drifts behind protruberances in the landscape, in gullies and in bowls are prone to triggering, can be released with ease. Naturally triggered avalanches of medium size are increasingly possible. If avalanches fracture down to deeper layers inside the snowpack they can even grow to large size and endanger exposed zones.

Snowpack structure

Strong-to-stormy winds generated more small-sized, trigger-sensitive snowdrift accumulations in early morning. As a result of snowfall and wind, danger levels will increase during the course of the day. Fresh snow and drifts will be deposited on shady slopes atop loose old layers of snow and bond poorly with them. Often there is graupel embedded in the snowpack. The old snow is well consolidated and stable. Weak layers beneath the melt-freeze crusts can generally be triggered only by large additional loading.

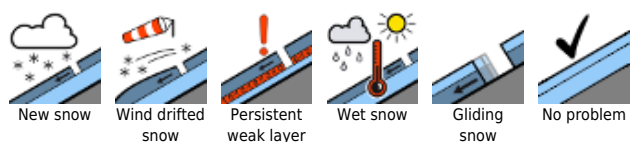
Weather

A powerful cold front with storm winds. Towards midday the snowfall will set in, become heavy by the end of the day. In the northern regions by tomorrow morning, 60 to 70 cm of new snow is anticipated, in the other regions up to 50 cm. Temperature at 2000m: -4 degrees. Strong to storm strength W/NW winds at high altitude.

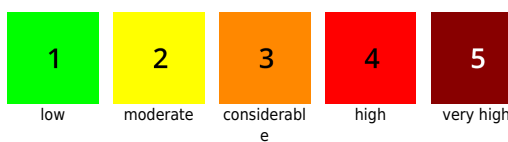
Outlook

By Tuesday morning, large amounts of fresh fallen snow are expected. Avalanche danger will rise during the night to Danger Level 4.

Avalanche problems



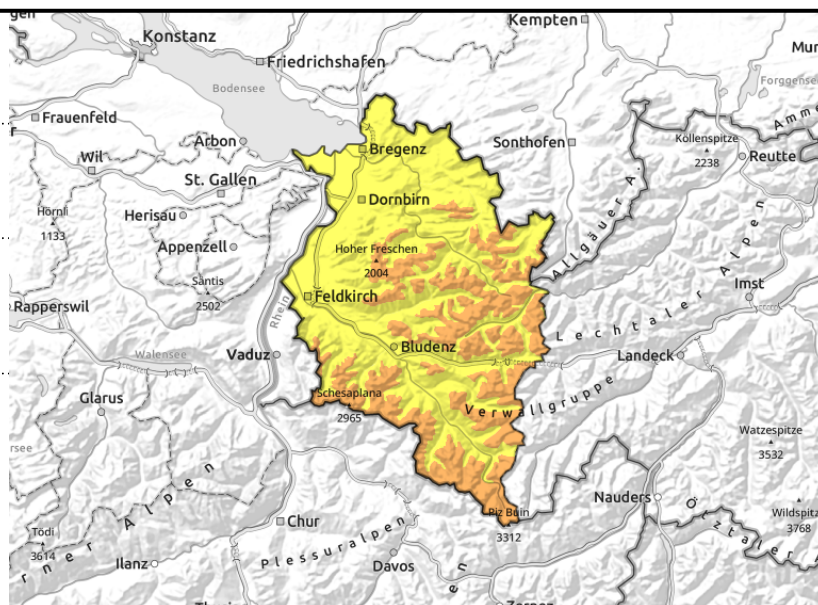
Danger ratings



Expositions



Bregenzwaldgebirge, Allgäuer Alpen, Lechtaler Alpen, Lechquellengebirge, Rätikon West, Rätikon Ost, Silvretta, Verwall



forestline



size and spread increasing in gullies, bowls, behind protruberances



critical mass of new snow during the day

Significant rise in avalanche danger during the daytime due to new snow/snowdrifts

During the morning moderate danger prevails at high altitudes. As a consequence of fresh snow and storm-strength winds, danger will increase to “considerable” (Danger Level 3) particularly above the timberline. Freshly generated snowdrift accumulations and the critical mass of fresh fallen snow are the main dangers. Frequency and size of the avalanche prone locations increase with ascending altitude. Fresh drifts behind protruberances in the landscape, in gullies and in bowls are prone to triggering, can be released with ease. Naturally triggered avalanches of medium size are increasingly possible. If avalanches fracture down to deeper layers inside the snowpack they can even grow to large size and endanger exposed zones.

Snowpack structure

Strong-to-stormy winds generated more small-sized, trigger-sensitive snowdrift accumulations in early morning. As a result of snowfall and wind, danger levels will increase during the course of the day. Fresh snow and drifts will be deposited on shady slopes atop loose old layers of snow and bond poorly with them. Often there is graupel embedded in the snowpack. The old snow is well consolidated and stable. Weak layers beneath the melt-freeze crusts can generally be triggered only by large additional loading.

Weather

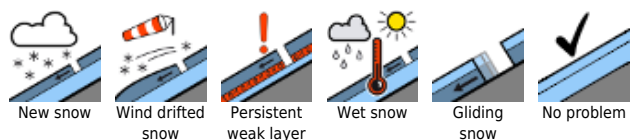
A powerful cold front with storm winds. Towards midday the snowfall will set in, become heavy by the end of the day. In the northern regions by tomorrow morning, 60 to 70 cm of new snow is anticipated, in the other regions up to 50 cm. Temperature at 2000m: -4 degrees. Strong to storm strength W/NW winds at high altitude.

Outlook

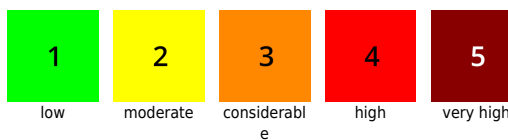
By Tuesday morning, large amounts of fresh fallen snow are expected. Avalanche danger will rise during the night to Danger Level 4.

Translated by Jeffrey McCabe, www.creativtrans.com

Avalanche problems



Danger ratings



Expositions

