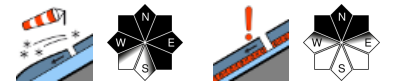


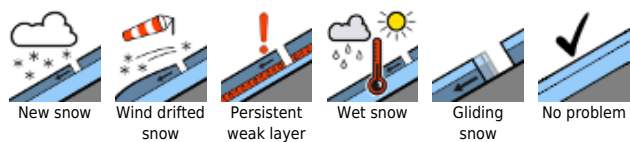
## Fresh snowdrift accumulations are prone-to-triggering: caution



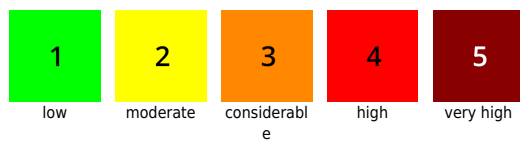
Bregenzwaldgebirge, Allgäuer Alpen, Lechtalengebirge, Rätikon West, Rätikon Ost, Silvretta, Verwall



### Avalanche problems



### Danger ratings



### Expositions

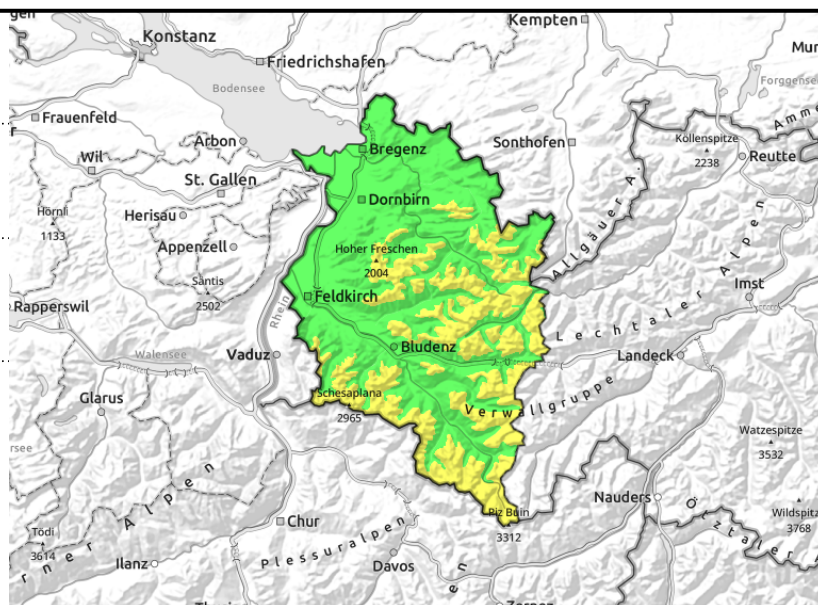


**Bregenzerwaldgebirge, Allgäuer Alpen, Lechtaler Alpen, Lechquellengebirge, Rätikon West, Rätikon Ost, Silvretta, Verwall**



steep terrain, gullies, bowls, behind protruberances

high alpine ridgeline slopes, extremely steep terrain



**Above 2000 m: moderate avalanche danger. Main danger: fresh snowdrifts.**

Above about 2000 m, avalanche danger is moderate. Fresh snowdrift accumulations are the main danger. Avalanche prone locations are found on wind-impacted steep slopes and in gullies, bowls, behind protruberances. Frequency and spread of the danger zones increase with ascending altitude. In some places small-to-medium sized avalanches can easily be triggered. They are generally small releases, sometimes medium-sized due to larger drifts. Apart from the risks of being buried in snow, the hazards of falling and being swept along also need to be taken into consideration. Furthermore, on isolated steep slopes the surface layers of the old snowpack can be triggered where weak. Such avalanche prone locations are found in high-alpine ridgeline areas and on extremely steep, mostly shady slopes, where triggerings can fracture down to deeper layers, making the releases larger.

**Snowpack structure**

Last night there was 5 cm of fresh snow registered widespread, only a touch on the Arlberg, Verwall, Rätikon and Silvretta, amid strong-to-very strong NW winds. On sunny slopes the surface is mostly encrusted, on shady slopes without wind impact the snow is powdery up to high altitudes. Exposed zones show heavy wind impact, sunny slopes are usually encrusted, shady wind protected slopes are still powdery. The snow showers often contain graupel. The old snowpack is generally well consolidated and is stable. Weak layer near melt-freeze crusts embedded at mid-level of the snowpack layering are generally triggerable only by large additional loading.

**Weather**

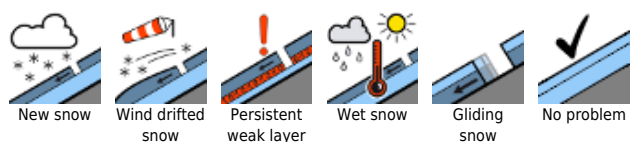
NW air current, with a mild cold front. The day will begin with gray skies, light snowfall, most between Bregenzerwald and Arlberg, tapering off during the daytime, bright intervals are expected this afternoon. Temperature at 2000 m: -4 degrees. Strong-to-stormy W/NW winds at high altitude.

**Outlook**

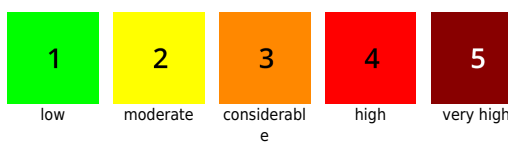
From Monday until Wednesday, a northern barrier cloud front will bring large amounts of fresh snow. Avalanche danger levels are expected to increase significantly.

Translated by Jeffrey McCabe, [www.creativtrans.com](http://www.creativtrans.com)

**Avalanche problems**



**Danger ratings**



**Expositions**

