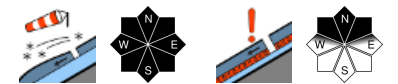


## Fresh snowdrift accumulations are prone-to-triggering: caution



Bregenzerwaldgebirge, Allgäuer Alpen, Lechtaler Alpen, Lechquellengebirge, Rätikon West, Rätikon Ost, Silvretta, Verwall



### Avalanche problems



### Danger ratings



### Expositions

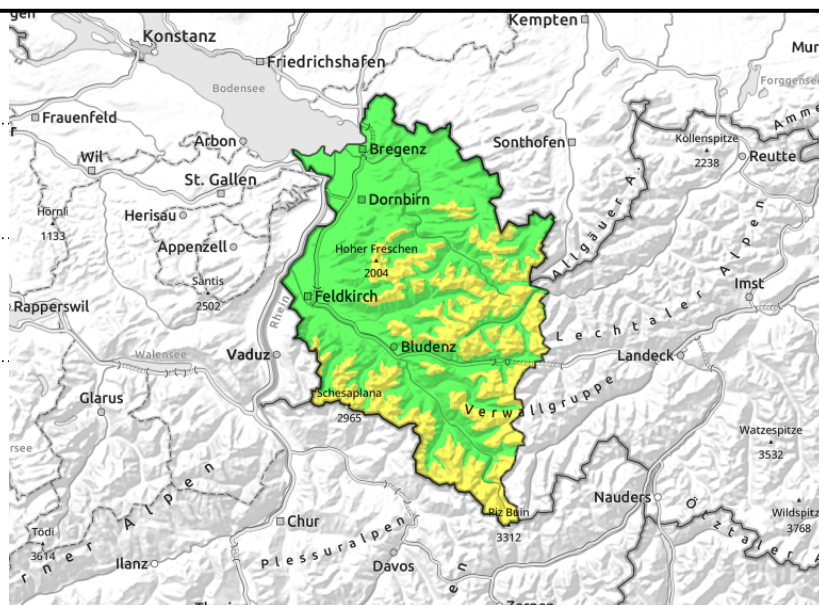


**Bregenzerwaldgebirge, Allgäuer Alpen, Lechtaler Alpen, Lechquellengebirge, Rätikon West, Rätikon Ost, Silvretta, Verwall**



steep ridgeline terrain, gullies, bowls, behind protruberances

high alpine ridgeline slopes, extremely steep terrain



**Above 2000 m: moderate avalanche danger. Main danger: fresh snowdrifts.**

Above about 2000 m, avalanche danger is moderate. Fresh snowdrift accumulations are the main danger. Avalanche prone locations are found on wind-impacted steep slopes and in gullies, bowls, behind protruberances. Frequency and spread of the danger zones increase with ascending altitude. In some places small-to-medium sized avalanches can easily be triggered. In additional, in isolated cases in steep terrain, the surface-near layers of the old snowpack can be triggered; they are generally small releases, however. Such avalanche prone locations are found in high-alpine ridgeline areas and on extremely steep, mostly shady slopes, where triggerings can fracture down to deeper layers, making the releases larger. Apart from the risks of being buried in snow, the hazards of falling and being swept along also need to be taken into consideration.

**Snowpack structure**

Last night there was 5 cm of fresh snow registered widespread, up to 10 cm on the Arlberg and in the Allgäu Alps, amid strong-to-very strong NW winds. On sunny slopes the surface is mostly encrusted, on shady slopes without wind impact the snow is powdery up to high altitudes. Exposed zones show heavy wind impact, sunny slopes are usually encrusted, shady wind protected slopes are still powdery. Yesterday's snow showers contained graupel. The old snowpack is generally well consolidated and is stable. Weak layer near melt-freeze crusts embedded at mid-level of the snowpack layering are generally triggerable only by maximum additional loading. Several small avalanches were triggered by skiers/boarders yesterday.

**Weather**

NW air current, with clouds, fog and highly variable visibility, and snow showers. Light snowfall is likely, the amounts will be minor. Towards midday, clouds will begin to disperse, some sunshine is expected. Temperature at 2000 m: -6 to -2 degrees. Strong W/NW winds at high altitude.

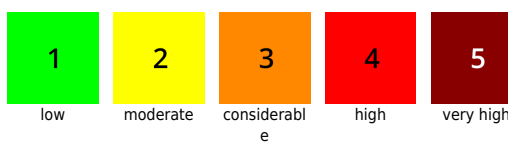
**Outlook**

On Saturday night, 10-15 cm of fresh snow is expected, about 5 cm in Silvretta and Rätikon. On Sunday, only intermittent snow showers. Avalanche danger levels are not expected to change

**Avalanche problems**



**Danger ratings**



**Expositions**

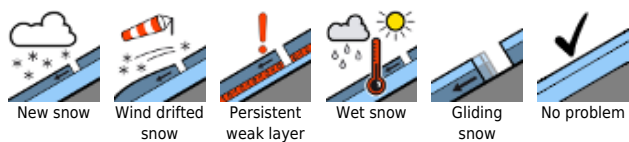


**29.01.2022**

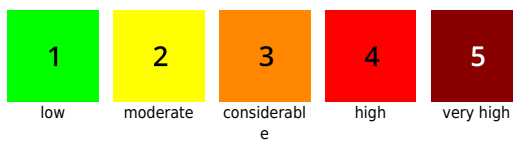
significantly. Starting on Monday, powerful NW air current with large amounts of fresh snow anticipated. Avalanche danger will rise.

Translated by Jeffrey McCabe, [www.creativtrans.com](http://www.creativtrans.com)

**Avalanche problems**



**Danger ratings**



**Expositions**

