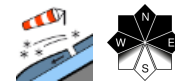


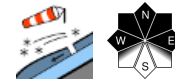
## Favorable conditions, moderate avalanche danger at high altitude



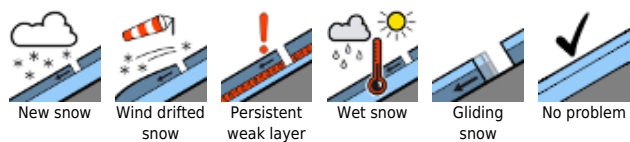
2000 m Bregenzwaldgebirge, Allgäuer Alpen, Lechquellengebirge, Lechtaler Alpen



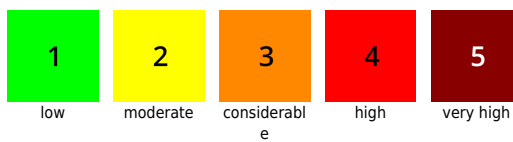
2200 m Rätikon West, Rätikon Ost, Silvretta, Verwall



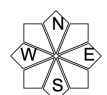
### Avalanche problems



### Danger ratings



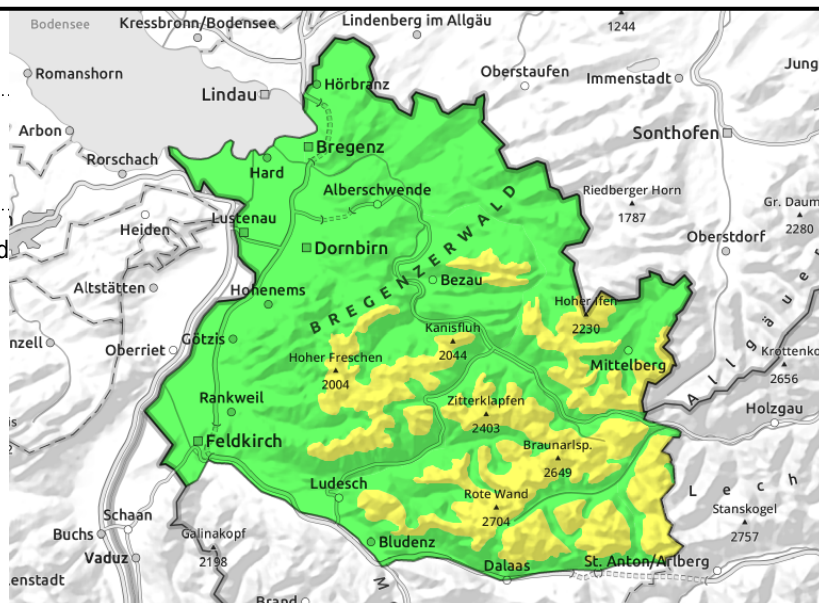
### Expositions



**Bregenzerwaldgebirge, Allgäuer Alpen, Lechquellengebirge, Lechtaler Alpen**



small drifts in ridgelines, behind protruberances, in gullies, bowls



**Small snowdrift accumulations are often still prone to triggering in steep terrain**

Small fresh and covered snowdrift accumulations of recent days are still prone to triggering in places. They increase in size and frequency with ascending altitude. One sole skier/boarder can trigger an avalanche in steep terrain. They are generally small-sized. In isolated cases avalanches can be triggered in the old snow by large additional loading. Such danger zones are mostly in extremely steep, usually shady terrain. Apart from the risks of being buried in snow, the hazards of being swept along and taking a fall need to be considered.

**Snowpack structure**

Fresh snow and fresh snowdrifts of the last few days have been able to settle further and increasingly consolidate. On shady slopes they lie atop cold, powdery layers of old snow. On sunny slopes, often atop melt-freeze encrusted old snowpack surfaces. Bonding to them and inside the new layers themselves is generally good, but worsens with ascending altitude. The old snowpack is well consolidated and stable. Weak layers beneath melt-freeze crusts at mid-level of the snowpack can ordinarily be triggered only by large additional loading.

**Weather**

It will be very sunny, temperatures will rise further, the zero-degree will ascend during the day to 2400 m. Temperature at 2000 m: -2 to +2 degrees. Brisk NE winds, slackening off this afternoon.

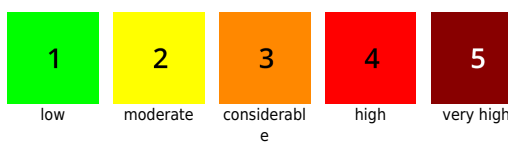
**Outlook**

Tuesday and Wednesday will be quite sunny, temperatures will rise a further notch. Avalanche danger will continue to diminish.

**Avalanche problems**



**Danger ratings**



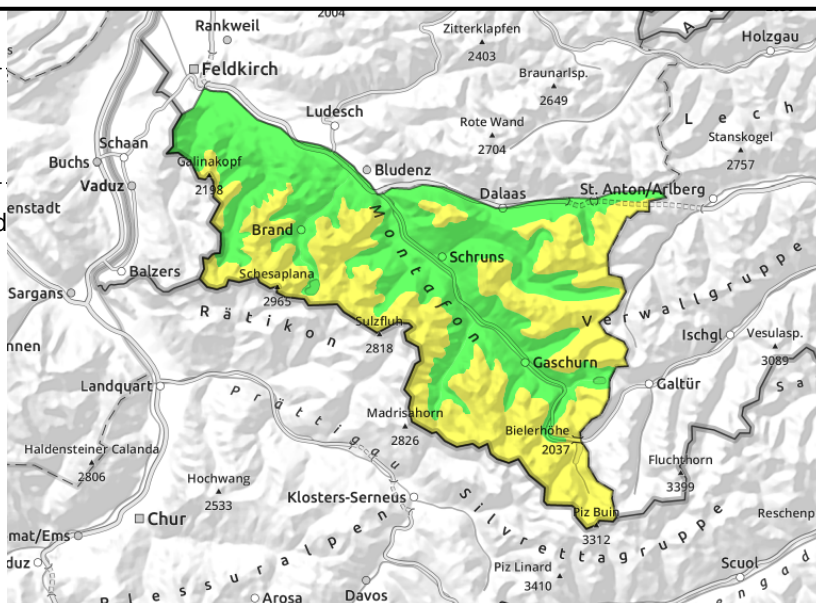
**Expositions**



## Rätikon West, Rätikon Ost, Silvretta, Verwall



small drifts in ridgelines, behind protruberances, in gullies, bowls



## Small snowdrift accumulations are often still prone to triggering in steep terrain

Small fresh and covered snowdrift accumulations of recent days are still prone to triggering in places. They increase in size and frequency with ascending altitude. One sole skier/boarder can trigger an avalanche in steep terrain. They are generally small-sized. In isolated cases avalanches can be triggered in the old snow by large additional loading. Such danger zones are mostly in extremely steep, usually shady terrain. Apart from the risks of being buried in snow, the hazards of being swept along and taking a fall need to be considered.

### Snowpack structure

Fresh snow and fresh snowdrifts of the last few days have been able to settle further and increasingly consolidate. On shady slopes they lie atop cold, powdery layers of old snow. On sunny slopes, often atop melt-freeze encrusted old snowpack surfaces. Bonding to them and inside the new layers themselves is generally good, but worsens with ascending altitude. The old snowpack is well consolidated and stable. Weak layers beneath melt-freeze crusts at mid-level of the snowpack can ordinarily be triggered only by large additional loading.

### Weather

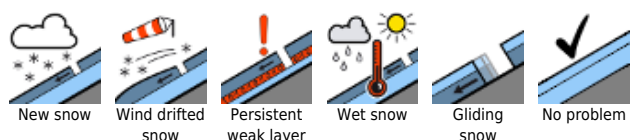
It will be very sunny, temperatures will rise further, the zero-degree will ascend during the day to 2400 m. Temperature at 2000 m: -2 to +2 degrees. Brisk NE winds, slackening off this afternoon.

### Outlook

Tuesday and Wednesday will be quite sunny, temperatures will rise a further notch. Avalanche danger will continue to diminish.

Translated by Jeffrey McCabe, [www.creativtrans.com](http://www.creativtrans.com)

### Avalanche problems



### Danger ratings



### Expositions

