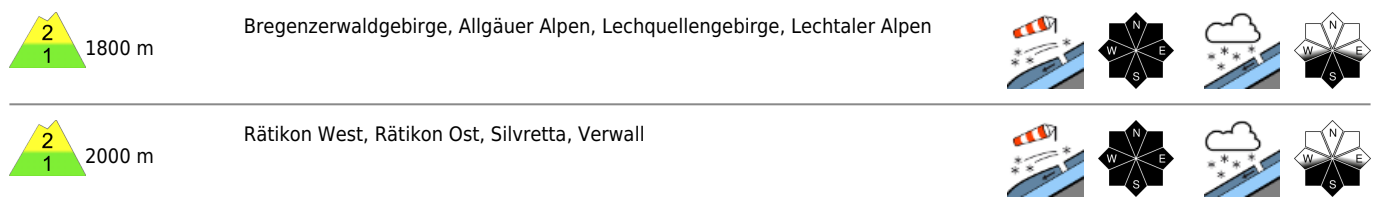
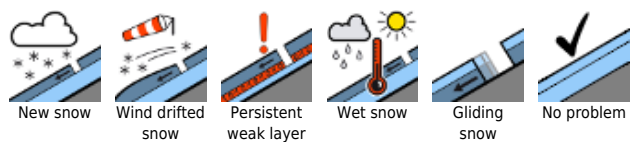


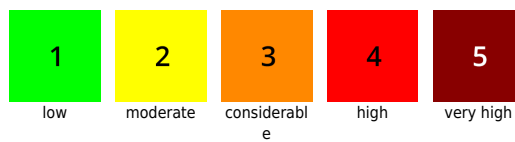
## Moderate avalanche danger widespread at high altitude



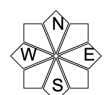
### Avalanche problems



### Danger ratings



### Expositions

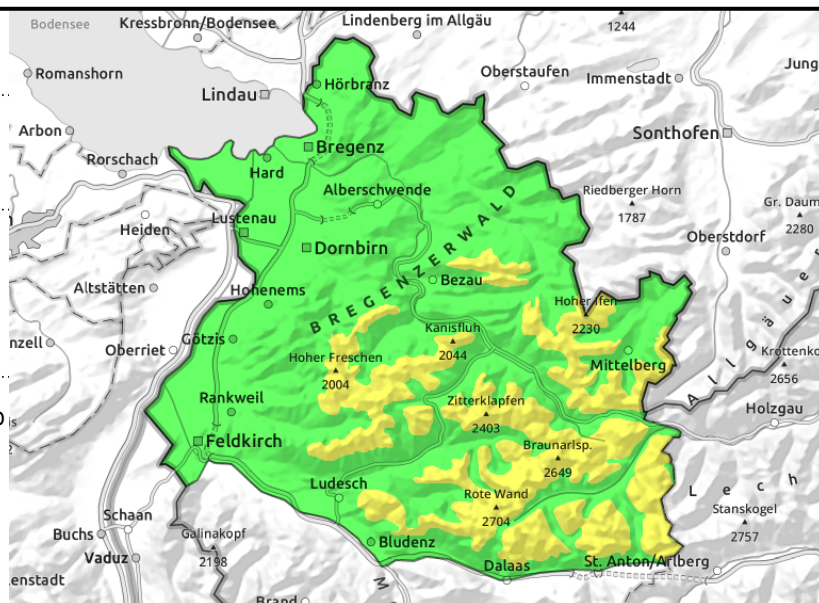


**Bregenzerwaldgebirge, Allgäuer Alpen, Lechquellengebirge, Lechtaler Alpen**



fresh/covered drifts in ridgelines, behind protruberances, in gullies, bowls with ascending altitude

loose-snow avalanches in steep rocky terrain



**Fresh/covered snowdrifts prone to triggering**

The main danger stems from freshly generated snowdrift accumulations. They become larger and more numerous with ascending altitude and are prone to triggering. One sole skier/boarder can trigger a small-to-medium sized avalanche in steep terrain. Today's solar radiation will increase the likelihood of slab and loose-snow avalanches triggering, particularly on steep sunny slopes. Naturally triggered loose-snow avalanches are possible in steep rocky terrain. In isolated cases avalanches can also trigger in the old snow. Such danger zones are found on very steep shady slopes in high alpine regions and on extremely steep slopes in general. Apart from the risks of being buried in snow masses the hazards of falling need to be taken into consideration.

**Snowpack structure**

On Saturday night there was an additional 5 cm of fresh snow, registered with little wind impact. It lies on the fresh snow of recent days or atop the fresh drifts behind protruberances, in gullies and bowls, on shady slopes often atop cold, powdery old snow layers; on sunny slopes atop melt-freeze encrusted old snow surfaces. Bonding worsens with ascending altitude. The old snowpack is generally well consolidated and stable. Weak layers near the uppermost melt-freeze crusts as well as at mid-level of the snowpack can be triggered only in isolated cases in shady steep terrain.

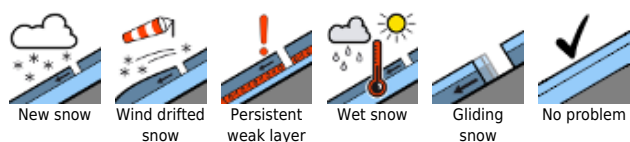
**Weather**

It will be quite sunny today, temperatures will be slightly higher. At 2000 m: -7 to -1 degree. Light to moderate NE winds.

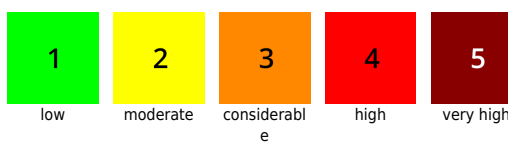
**Outlook**

Monday will be very sunny and temperatures will continue to rise. Avalanche dange is not expected to change significantly.

**Avalanche problems**



**Danger ratings**



**Expositions**



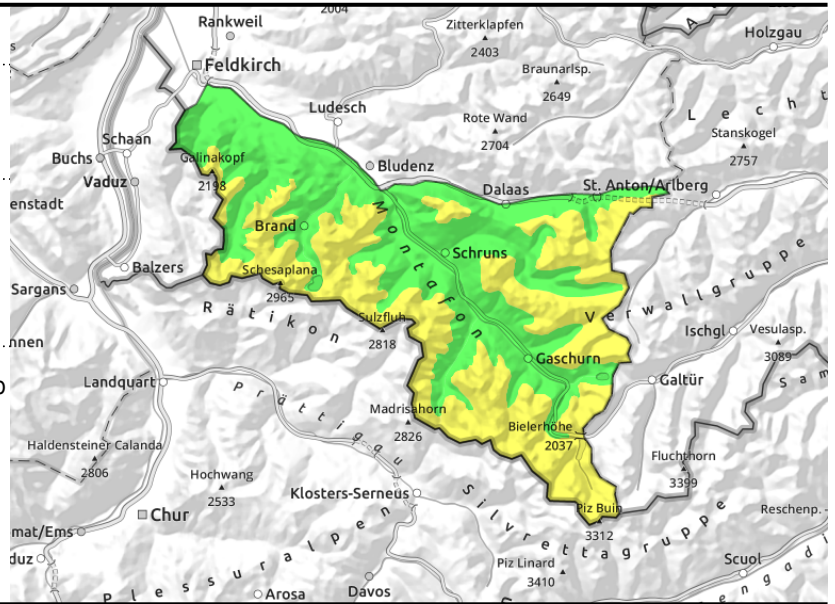
**Rätikon West, Rätikon Ost, Silvretta, Verwall**



small fresh drifts in ridgelines, behind protruberances, in gullies, bowls with ascending altitude



loose-snow avalanches in steep rocky terrain



**Fresh/covered snowdrifts prone to triggering**

The main danger stems from freshly generated snowdrift accumulations. They become larger and more numerous with ascending altitude and are prone to triggering. One sole skier/boarder can trigger a small-to-medium sized avalanche in steep terrain. Today's solar radiation will increase the likelihood of slab and loose-snow avalanches triggering, particularly on steep sunny slopes. Naturally triggered loose-snow avalanches are possible in steep rocky terrain. In isolated cases avalanches can also trigger in the old snow. Such danger zones are found on very steep shady slopes in high alpine regions and on extremely steep slopes in general. Apart from the risks of being buried in snow masses the hazards of falling need to be taken into consideration.

**Snowpack structure**

On Saturday night there was an additional 5 cm of fresh snow, registered with little wind impact. It lies on the fresh snow of recent days or atop the fresh drifts behind protruberances, in gullies and bowls, on shady slopes often atop cold, powdery old snow layers; on sunny slopes atop melt-freeze encrusted old snow surfaces. Bonding worsens with ascending altitude. The old snowpack is generally well consolidated and stable. Weak layers near the uppermost melt-freeze crusts as well as at mid-level of the snowpack can be triggered only in isolated cases in shady steep terrain.

**Weather**

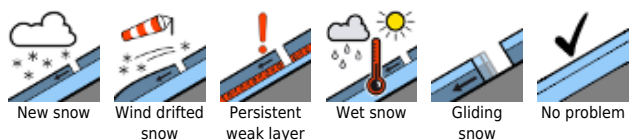
It will be quite sunny today, temperatures will be slightly higher. At 2000 m: -7 to -1 degree. Light to moderate NE winds.

**Outlook**

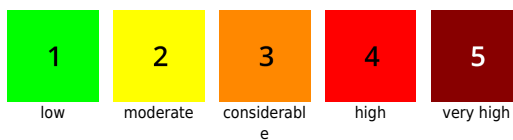
Monday will be very sunny and temperatures will continue to rise. Avalanche dange is not expected to change significantly.

Translated by Jeffrey McCabe, [www.creativtrans.com](http://www.creativtrans.com)

**Avalanche problems**



**Danger ratings**



**Expositions**

