

## Moderate avalanche danger widespread at high altitude

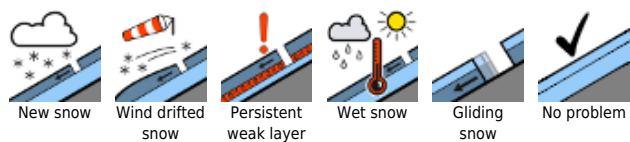


forestline

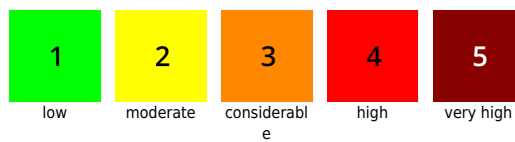
Rätikon West, Bregenzerwaldgebirge, Allgäuer Alpen, Lechquellengebirge, Lechtaler Alpen, Verwall, Rätikon Ost, Silvretta



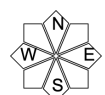
### Avalanche problems



### Danger ratings



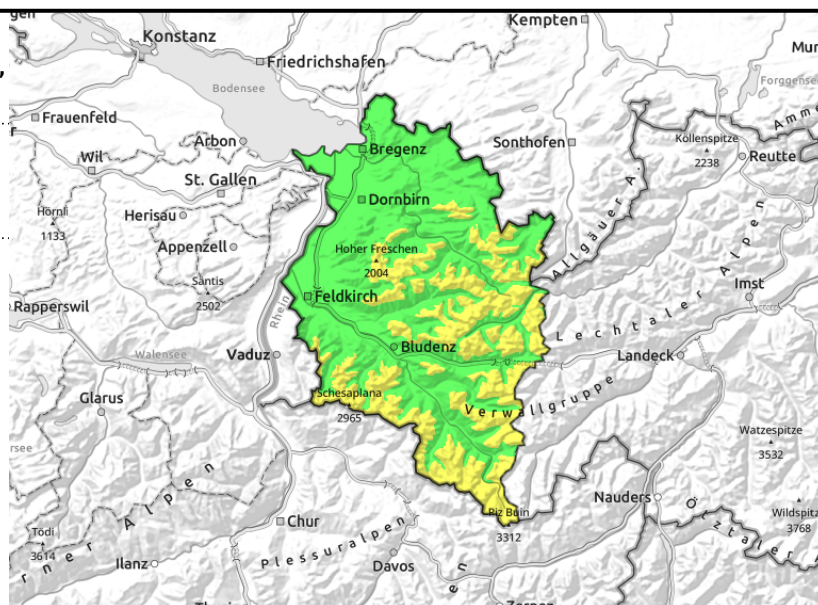
### Expositions



**Rätikon West, Bregenzerwaldgebirge, Allgäuer Alpen, Lechquellengebirge, Lechtaler Alpen, Verwall, Rätikon Ost, Silvretta**



fresh/blanketed drifts in ridgelines, behind protruberances, in gullies, bowls with ascending altitude



## Fresh/covered snowdrifts more prone to trigger with ascending altitude

Moderate avalanche danger at high altitudes, the main danger stems from freshly generated snowdrift accumulations. They become larger and more numerous with ascending altitude and are prone to triggering. One sole skier/boarder can trigger a small-to-medium sized avalanche in steep terrain. Naturally triggered loose-snow avalanches are possible in steep rocky terrain. In isolated cases avalanches can also trigger in the old snow. Such danger zones are found on very steep shady slopes in high alpine regions and on extremely steep slopes in general. Apart from the risks of being buried in snow masses the hazards of falling need to be taken into consideration.

### Snowpack structure

On Friday night there was little wind and only an additional 5 cm of fresh snow registered. It was deposited atop loose new snow from the day before or blankets fresh drifts behind protruberances, in gullies and bowls, on shady slopes often atop cold, powdery old snow layers; on sunny slopes atop melt-freeze encrusted old snow surfaces. Bonding worsens with ascending altitude. The old snowpack is generally well consolidated and stable. Weak layers near the uppermost melt-freeze crusts as well as at mid-level of the snowpack can be triggered only in isolated cases in shady steep terrain and in high alpine regions.

### Weather

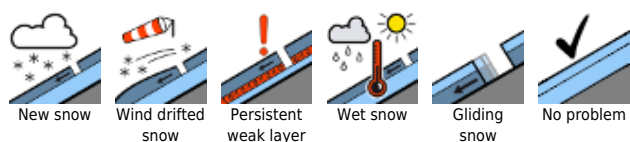
Saturday will be gray, poor visibility widespread. The peaks will often be veiled in fog, intermittent light snowfall is expected. Temperatures will rise slightly, but the northerly winds will make it feel cold. Temperature at 2000 m: -9 to -6 degrees. Strong northerly winds.

### Outlook

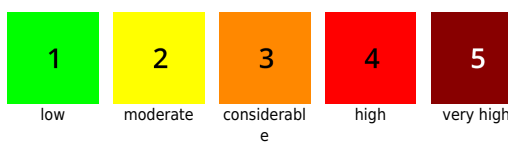
Residual clouds will rapidly disperse on Sunday and it will become sunny. Temperatures will rise, winds slacken off. Avalanche danger is not expected to change significantly.

Translated by Jeffrey McCabe, [www.creativtrans.com](http://www.creativtrans.com)

#### Avalanche problems



#### Danger ratings



#### Expositions

