

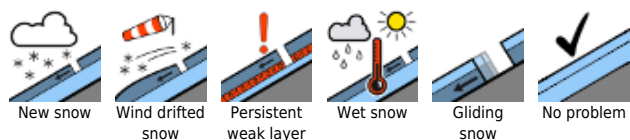
Avalanche danger rising over course of day. Increasing fresh snowdrifts at high altitude.



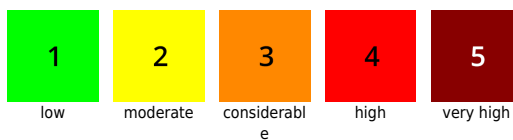
Lechquellengebirge, Rätikon Ost, Rätikon West, Verwall, Silvretta, Bregenzerwaldgebirge, Allgäuer Alpen, Lechtaler Alpen



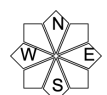
Avalanche problems



Danger ratings



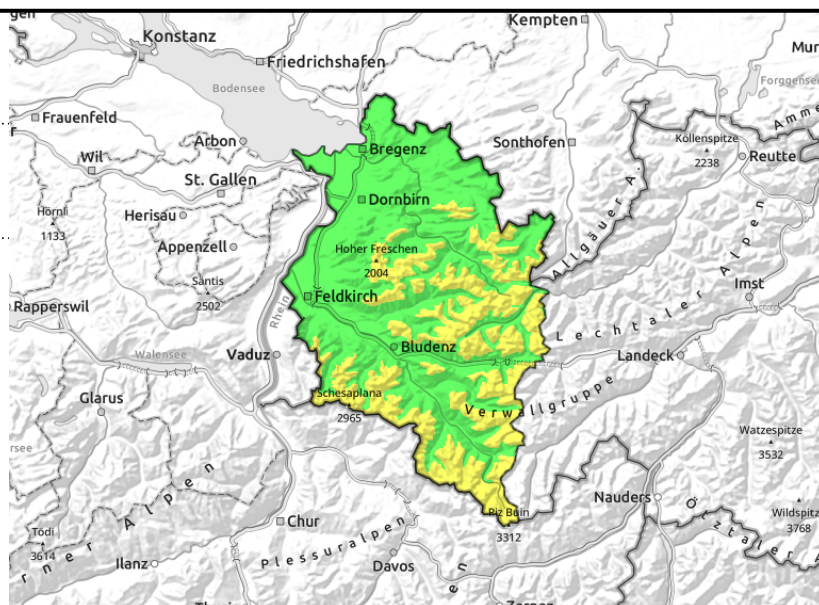
Expositions



Lechquellengebirge, Rätikon Ost, Rätikon West, Verwall, Silvretta, Bregenzerwaldgebirge, Allgäuer Alpen, Lechtaler Alpen



fresh drifts in ridgelines and behind protruberances with ascending altitude



Heed fresh drifts, more frequent with ascending altitude

Generally low danger in early morning, rising to moderate at midday. As a result of new snow and winds, fresh snowdrift accumulations will be generated, then increase in frequency and size throughout the day. They are prone to triggering and will trigger easily. In isolated cases small avalanches can also trigger in the old snow. Such danger zones are found on very steep shady slopes in high alpine regions and on extremely steep slopes in general. Apart from the risks of being buried in snow masses the hazards of falling need to be taken into consideration.

Snowpack structure

There was up to 5 cm of new snow registered, falling amid intermittently strong wind influence, generating small new drifts which were deposited behind protruberances, in gullies, bowls, often atop cold powder on shady slopes. Bonding is frequently inadequate. The old snowpack is generally well consolidated and stable. Weak layers near the uppermost melt-freeze crusts as well as at mid-level of the snowpack can be triggered only in isolated cases in shady steep terrain and in high alpine regions.

Weather

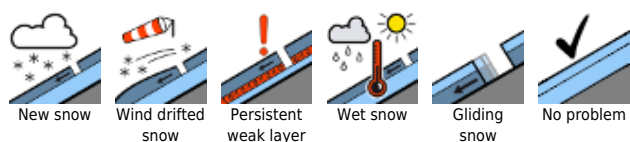
The peaks are partly shrouded in cloud, light to moderate snowfall (focus: Bregenzerwald and Allgäu Alps). Temperature at 2000 m: -8 degrees. Brisk to strong W/NW winds at high altitude.

Outlook

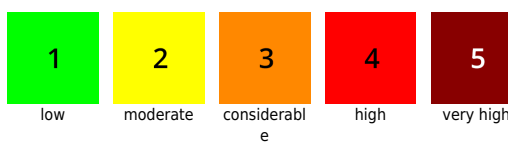
Heavy cloud cover will persist through the night, accompanied by intermittent snowfall. On Friday the clouds will disperse increasingly. Cold, with strong-velocity northerly winds. Avalanche danger can rise further at high altitudes.

Translated by Jeffrey McCabe, www.creativtrans.com

Avalanche problems



Danger ratings



Expositions

