

Generally favorable conditions, mostly low danger, often moderate danger at high altitude

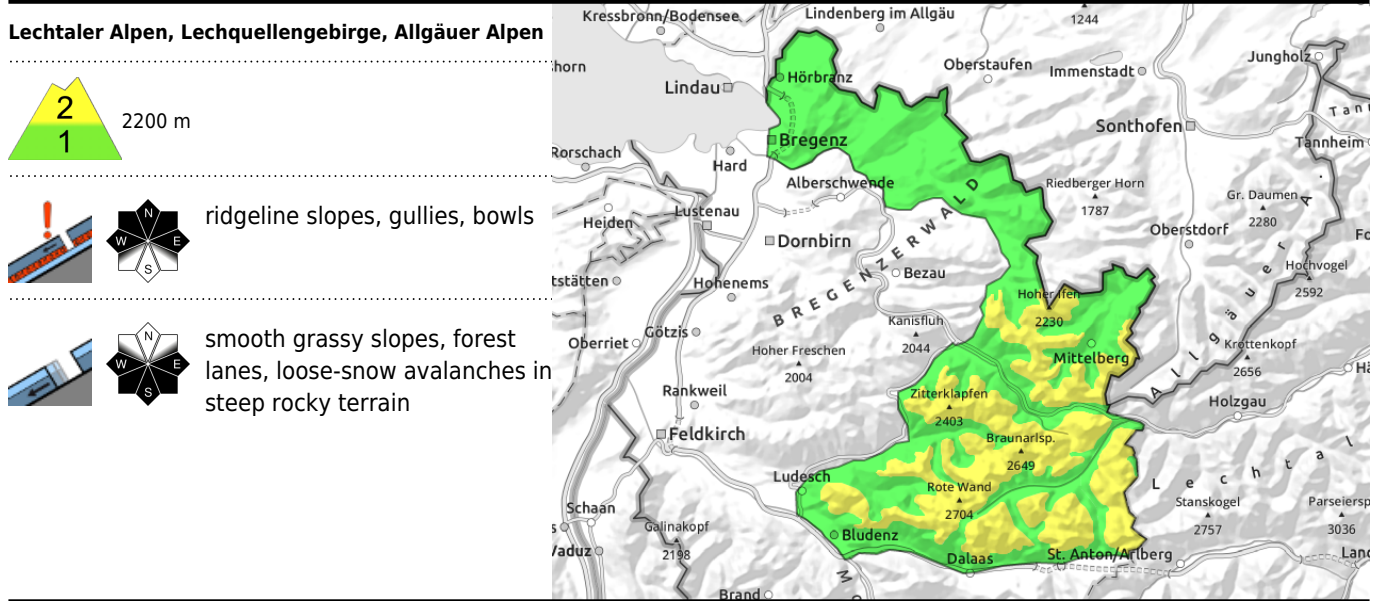
	2200 m	Lechtaler Alpen, Lechquellengebirge, Allgäuer Alpen	
	2200 m	Rätikon West, Rätikon Ost, Silvretta, Verwall	
		Bregenzerwaldgebirge	

Avalanche problems

Danger ratings

low moderate considerable high very high

Expositions



Predominantly favorable conditions, older drifts at high altitude still triggerable

Avalanche danger above 2200 m is moderate, below that altitude danger is low. Older snowdrift accumulations can be triggered by large additional loading at high altitude. Avalanche prone locations are found particularly on steep ridgeline slopes, in wind-loaded gullies and bowls. A cautious route selection is advised. At intermediate and low altitudes, particularly on sunny slopes, glide-snow avalanches are still possible. Caution urged below glide cracks. Due to daytime warming and solar radiation, mostly small-sized moist loose-snow avalanches can release naturally in steep rocky terrain during the course of the day, or also be triggered by winter sports enthusiasts.

Snowpack structure

On sunny slopes the snowpack surface is softening to an increasing degree, melt-freeze crusts form during the nocturnal hours. On shady slopes there is still powder. Exposed zones are often utterly windblown or have melt-freeze snow down to the ground; gullies and bowls are filled to the brim with drifts. Weak layers in the old snowpack and near surface-near melt-freeze crusts can still be triggered in places. The old snow beneath them is generally well consolidated and stable.

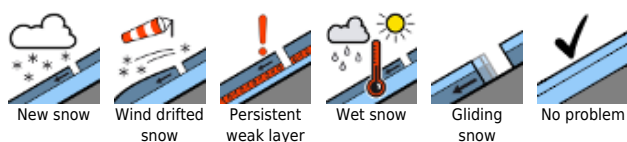
Weather

Little change in the conditions generated by a high-pressure front. The air is dry and mild, zero-degree level is at 2800 m, the skies are cloudless, the sunshine unimpeded. Less wind than in recent days. Temperature at 2000 m: 2-6 degrees. Mostly light winds at high altitude, mostly from northerly directions.

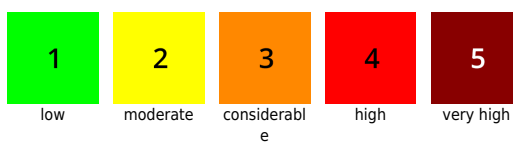
Outlook

Also on Sunday it will be sunny. Westerly winds at high altitudes will intensify during the daytime. Avalanche danger is not expected to change significantly.

Avalanche problems



Danger ratings



Expositions

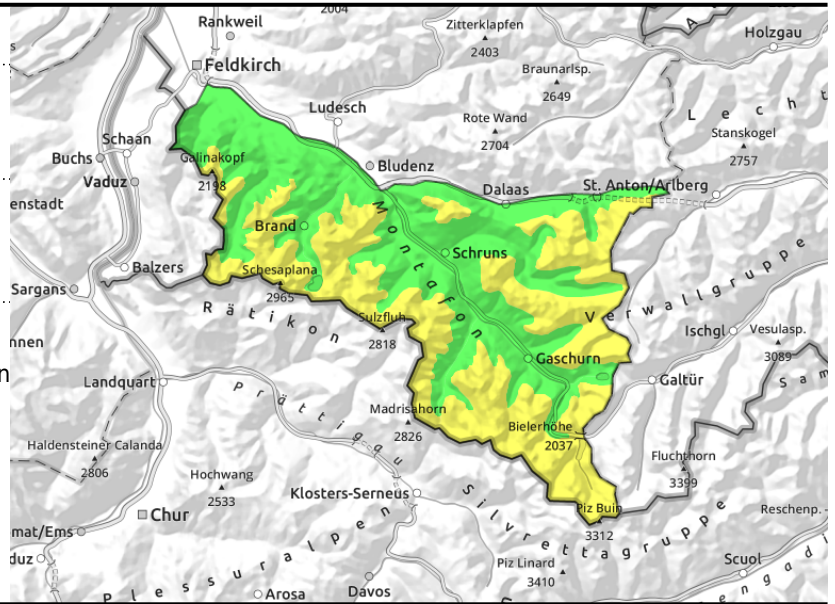


Rätikon West, Rätikon Ost, Silvretta, Verwall



ridgeline slopes, gullies, bowls

smooth grassy slopes, forest lanes, loose-snow avalanches in steep rocky terrain



Predominantly favorable conditions, older drifts at high altitude still triggerable

Avalanche danger above 2200 m is moderate, below that altitude danger is low. Older snowdrift accumulations can be triggered by large additional loading at high altitude. Avalanche prone locations are found particularly on steep ridgeline slopes, in wind-loaded gullies and bowls. A cautious route selection is advised. At intermediate and low altitudes, particularly on sunny slopes, glide-snow avalanches are still possible. Caution urged below glide cracks. Due to daytime warming and solar radiation, mostly small-sized moist loose-snow avalanches can release naturally in steep rocky terrain during the course of the day, or also be triggered by winter sports enthusiasts.

Snowpack structure

On sunny slopes the snowpack surface is softening to an increasing degree, melt-freeze crusts form during the nocturnal hours. On shady slopes there is still powder. Exposed zones are often utterly windblown or have melt-freeze snow down to the ground; gullies and bowls are filled to the brim with drifts. Weak layers in the old snowpack and near surface-near melt-freeze crusts can still be triggered in places. The old snow beneath them is generally well consolidated and stable. Faceted crystals are often evident at mid-level in the snowpack.

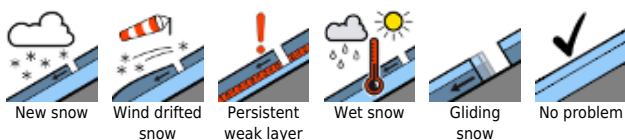
Weather

Little change in the conditions generated by a high-pressure front. The air is dry and mild, zero-degree level is at 2800 m, the skies are cloudless, the sunshine unimpeded. Less wind than in recent days. Temperature at 2000 m: 2-6 degrees. Mostly light winds at high altitude, mostly from northerly directions.

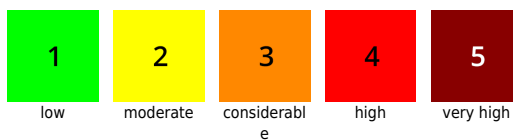
Outlook

Also on Sunday it will be sunny. Westerly winds at high altitudes will intensify during the daytime. Avalanche danger is not expected to change significantly.

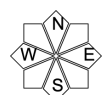
Avalanche problems



Danger ratings



Expositions



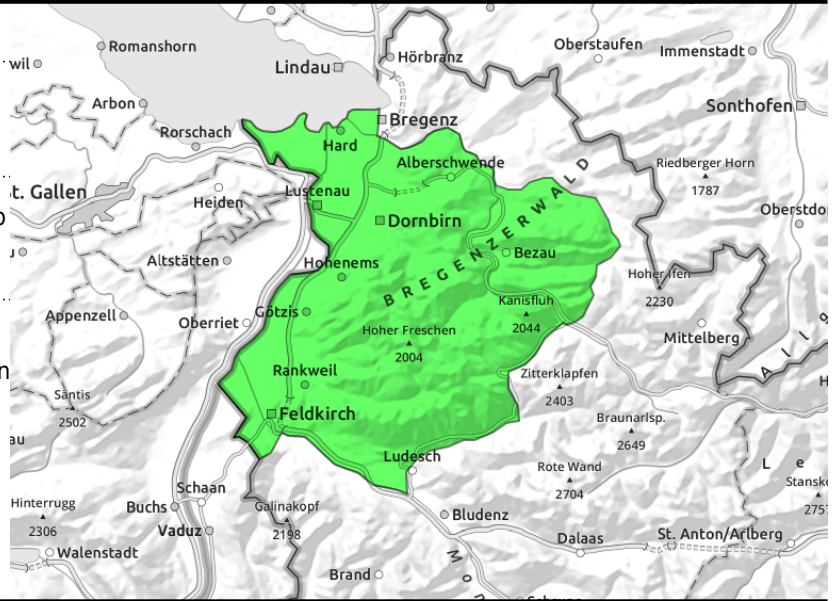
Bregenzerwaldgebirge



loose-snow avalanches in steep rocky terrain



smooth grassy slopes, forest lanes, loose-snow avalanches in steep rocky terrain



Predominantly favorable conditions, older drifts at high altitude still triggerable

Avalanche danger above 2200 m is moderate, below that altitude danger is low. Older snowdrift accumulations can be triggered by large additional loading at high altitude. Avalanche prone locations are found particularly on steep ridgeline slopes, in wind-loaded gullies and bowls. A cautious route selection is advised. At intermediate and low altitudes, particularly on sunny slopes, glide-snow avalanches are still possible. Caution urged below glide cracks. Due to daytime warming and solar radiation, mostly small-sized moist loose-snow avalanches can release naturally in steep rocky terrain during the course of the day, or also be triggered by winter sports enthusiasts.

Snowpack structure

On sunny slopes the snowpack surface is softening to an increasing degree, melt-freeze crusts form during the nocturnal hours. On shady slopes there is still powder. Exposed zones are often utterly windblown or have melt-freeze snow down to the ground; gullies and bowls are filled to the brim with drifts. Weak layers in the old snowpack and near surface-near melt-freeze crusts can still be triggered in places. The old snow beneath them is generally well consolidated and stable.

Weather

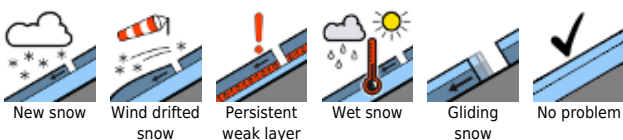
Little change in the conditions generated by a high-pressure front. The air is dry and mild, zero-degree level is at 2800 m, the skies are cloudless, the sunshine unimpeded. Less wind than in recent days. Temperature at 2000 m: 2-6 degrees. Mostly light winds at high altitude, mostly from northerly directions.

Outlook

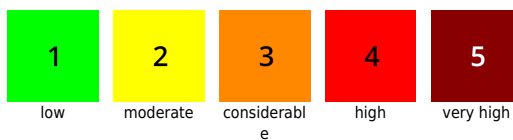
Also on Sunday it will be sunny. Westerly winds at high altitudes will intensify during the daytime. Avalanche danger is not expected to change significantly.

Translated by Jeffrey McCabe, www.creativtrans.com

Avalanche problems



Danger ratings



Expositions

