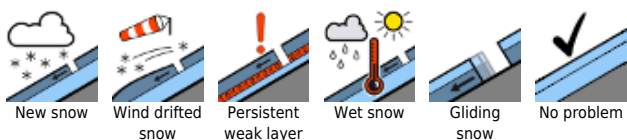


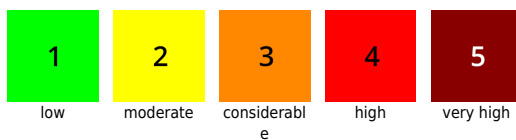
## Considerable avalanche danger at high altitude

	1800 m	Lechtaler Alpen, Lechquellengebirge, Bregenzerwaldgebirge, Allgäuer Alpen				
	2000 m	Rätikon West, Rätikon Ost, Silvretta, Verwall				

### Avalanche problems



### Danger ratings



### Expositions

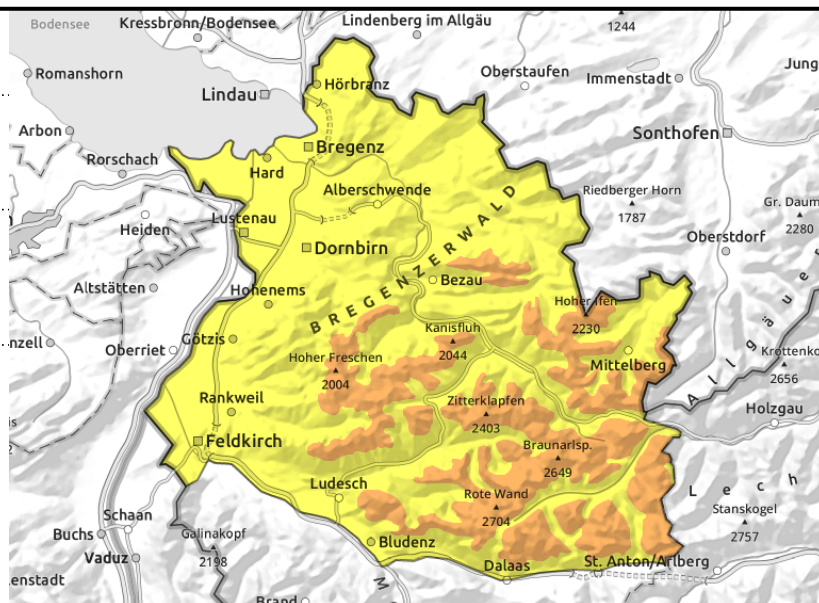


**Lechtaler Alpen, Lechquellengebirge, Bregenzerwaldgebirge, Allgäuer Alpen**



ridgelines, behind protruberances, gullies, bowls, increasing with altitude

isolated on smooth grassy slopes, in forest zones



**Fresh and blanketed snowdrifts are main danger - still glide-snow avalanches**

Fresh and frequently covered snowdrifts are prone to triggering in places. Avalanche prone locations are found especially in steep ridgeline terrain and in wind-loaded gullies and bowls. The increase with altitude in spread and frequency. Small-to-medium slabs can be triggered even by the weight of one sole skier. In steep terrain, snowdrift accumulations should be avoided. Whumpf noises and cracks in the surface are red flags. At intermediate and low altitudes, glide-snow avalanches are still possible: caution below glide cracks.

**Snowpack structure**

By early morning there was 5-10 cm of fresh snow registered, 15 cm from place to place. New snow and loose old snow have been transported far-reachingly by strong-to-stormy winds. Exposed zones are often windblown, bullies and bowls filled to the brim with drifts. New snow and freshly-generated drifts often cover older snowdrift accumulations of recent days or soft layers. In some places, grauple and surface hoar have been covered. Bonding to this (as well as in deeper layers) worsens with altitude. The old snowpack is generally well consolidated and stable, at intermediate altitudes thoroughly wet down to the ground.

**Weather**

Residual clouds and fog will gradually recede and it will turn sunny everywhere. Temperatures will rise slightly during the day. At 2000 m: -7 degrees. Brisk to strong E/NE winds at high altitude.

**Outlook**

Wednesday will be very sunny and somewhat warmer. Avalanche danger will decrease. Nevertheless, snowdrift accumulations at high altitudes will remain prone to triggering.

**Avalanche problems**



**Danger ratings**

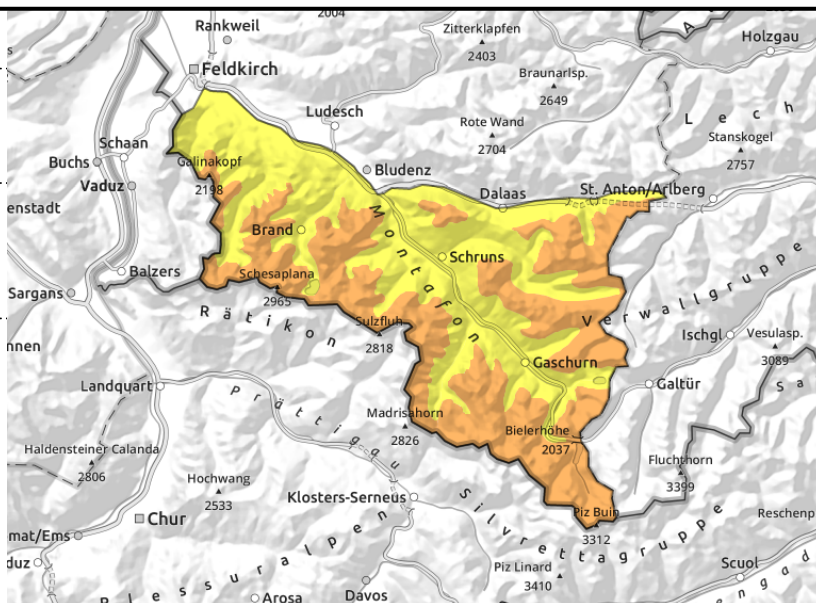
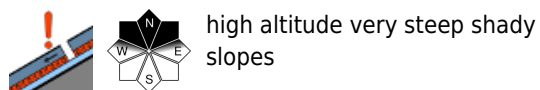
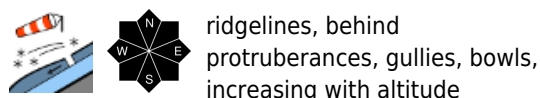


**Expositions**



**11.01.2022**

**Rätikon West, Rätikon Ost, Silvretta, Verwall**



**Fresh and blanketed snowdrifts are main danger**

Fresh and frequently covered snowdrifts are prone to triggering. Avalanche prone locations are found especially in steep ridgeline terrain and in wind-loaded gullies and bowls. Thus, snowdrift accumulations should be avoided at high altitude. Small-to-medium slabs can be triggered also in the old snow. Activities in outlying terrain require experience in assessing avalanche danger on-site and a defensive route selection.

**Snowpack structure**

By early morning there was 5-10 cm of fresh snow registered, 15 cm from place to place. New snow and loose old snow have been transported far-reachingly by strong-to-stormy winds. Exposed zones are often windblown, bullies and bowls filled to the brim with drifts. New snow and freshly-generated drifts often cover older snowdrift accumulations of recent days or soft layers. In some places, graupel and surface hoar have been covered. Bonding to this (as well as in deeper layers) worsens with altitude. The old snowpack is generally well consolidated and stable. In some places, faceted crystals at mid-level in the snowpack are triggerable.

**Weather**

Residual clouds and fog will gradually recede and it will turn sunny everywhere. Temperatures will rise slightly during the day. At 2000 m: -7 degrees. Brisk to strong E/NE winds at high altitude.

**Outlook**

Wednesday will be very sunny and somewhat warmer. Avalanche danger will decrease. Nevertheless, snowdrift accumulations at high altitudes will remain prone to triggering.

Translated by Jeffrey McCabe, [www.creativtrans.com](http://www.creativtrans.com)

**Avalanche problems**



**Danger ratings**



**Expositions**

