

Increased avalanche danger due to high winds, intense snow transport



1600 m

Lechtaler Alpen, Verwall, Lechquellengebirge, Bregenzerwaldgebirge, Allgäuer Alpen

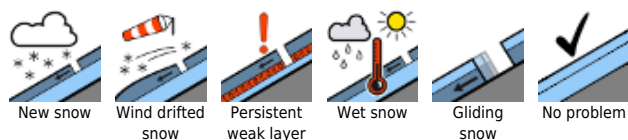


1800 m

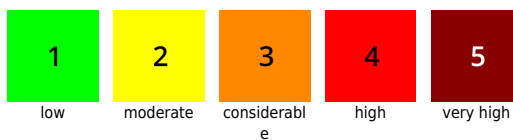
Rätikon West, Rätikon Ost, Silvretta



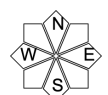
Avalanche problems



Danger ratings



Expositions



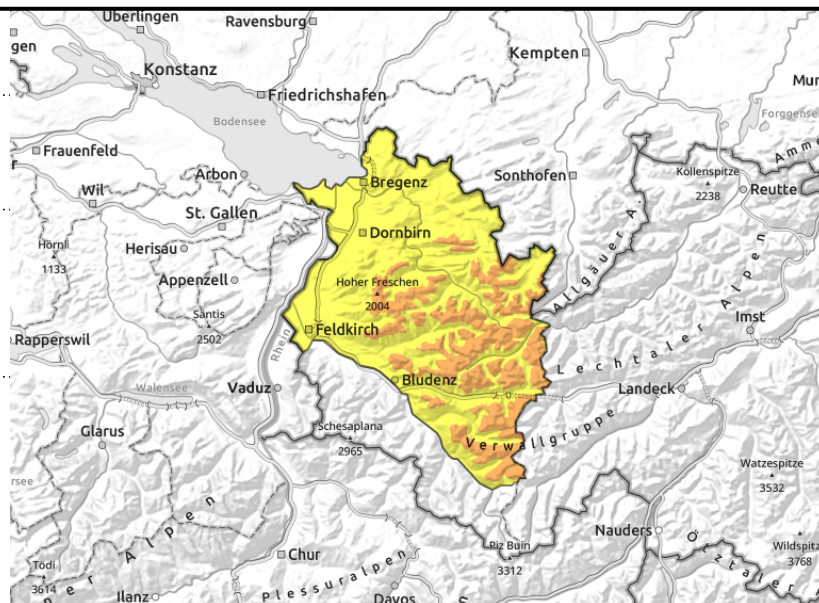
Lechtaler Alpen, Verwall, Lechquellengebirge, Bregenzerwaldgebirge, Allgäuer Alpen



ridgelines, behind protruberances, gullies, bowls, increasing with altitude and as day unfolds



isolated on smooth grassy slopes, in forest zones



Fresh and blanketed snowdrifts are main danger - still glide-snow avalanches

Fresh and frequently covered snowdrifts are prone to triggering. Avalanche prone locations are found especially in steep ridgeline terrain and in wind-loaded gullies and bowls. The increase with altitude in spread and frequency and with the hours of the unfolding day. Small-to-medium slabs can be triggered even by the weight of one sole skier. In steep terrain, snowdrift accumulations should be AVOIDED. Whumpf noises and cracks in the surface are red flags. At intermediate and low altitudes, glide-snow avalanches are still possible: caution below glide cracks.

Snowpack structure

By early morning there was 5-10 cm of fresh snow registered, 15 cm from place to place. New snow and loose old snow have been transported far-reachingly by strong-to-stormy winds. Exposed zones are often windblown, bullies and bowls filled to the brim with drifts. New snow and freshly-generated drifts often cover older snowdrift accumulations of recent days or soft layers. In some places, grauple and surface hoar have been covered. Bonding to this (as well as in deeper layers) worsens with altitude. The old snowpack is generally well consolidated and stable, at intermediate altitudes thoroughly wet down to the ground.

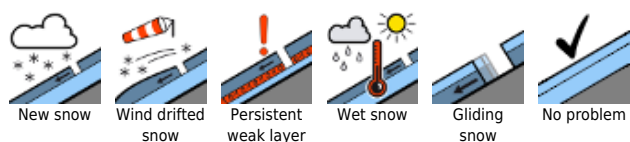
Weather

Clouds and fog will limit visibility. Light snowfall, increasing to moderate later in the morning. Wintery cold and, most important of all, very windy. Temperature at 2000 m: -9 degrees. Initially strong-to-stormy W/NW winds, slackening off during the day.

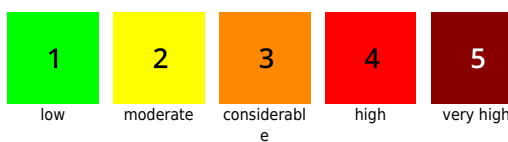
Outlook

Light snowfall during the night tonight. On Monday, conditions will improve sustainable. It will remain cold. Avalanche danger will gradually diminish.

Avalanche problems



Danger ratings



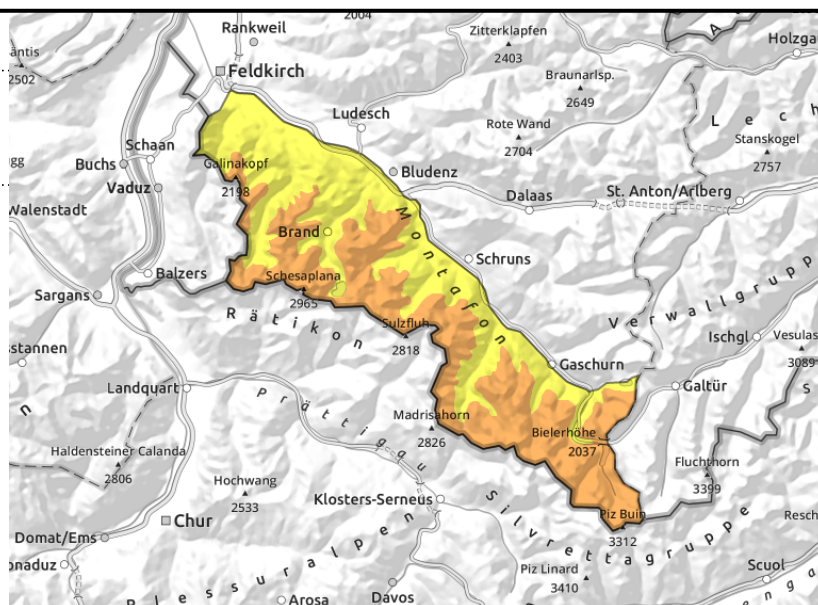
Expositions



Rätikon West, Rätikon Ost, Silvretta



ridgelines, behind protruberances, gullies, bowls, increasing with altitude and as day unfolds



Fresh and blanketed snowdrifts are main danger

Fresh and frequently covered snowdrifts are prone to triggering. Avalanche prone locations are found especially in steep ridgeline terrain and in wind-loaded gullies and bowls. The increase with altitude in spread and frequency and with the hours of the unfolding day. Small-to-medium slabs can be triggered even by the weight of one sole skier. In steep terrain, snowdrift accumulations should be AVOIDED. Whumpf noises and cracks in the surface are red flags.

Snowpack structure

By early morning there was 5-10 cm of fresh snow registered, 15 cm from place to place. New snow and loose old snow have been transported far-reachingly by strong-to-stormy winds. Exposed zones are often windblown, bullies and bowls filled to the brim with drifts. New snow and freshly-generated drifts often cover older snowdrift accumulations of recent days or soft layers. In some places, grauple and surface hoar have been covered. Bonding to this (as well as in deeper layers) worsens with altitude. The old snowpack is generally well consolidated and stable.

Weather

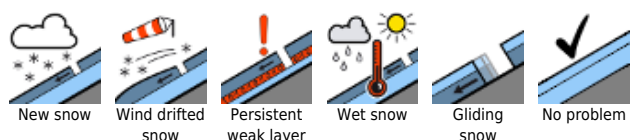
Clouds and fog will limit visibility. Light snowfall, increasing to moderate later in the morning. Wintery cold and, most important of all, very windy. Temperature at 2000 m: -9 degrees. Initially strong-to-stormy W/NW winds, slackening off during the day.

Outlook

Light snowfall during the night tonight. On Monday, conditions will improve sustainable. It will remain cold. Avalanche danger will gradually diminish.

Translated by Jeffrey McCabe, www.creativtrans.com

Avalanche problems



Danger ratings



Expositions

