

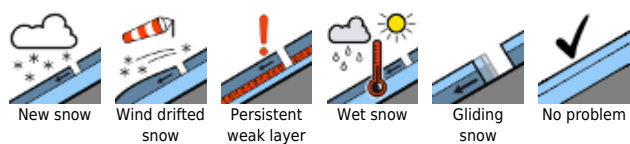
Moderate danger widespread at high altitudes



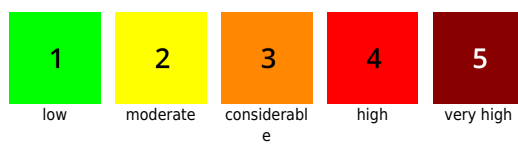
Lechtaler Alpen, Lechquellengebirge, Bregenzerwaldgebirge, Allgäuer Alpen, Verwall, Rätikon West, Rätikon Ost, Silvretta



Avalanche problems



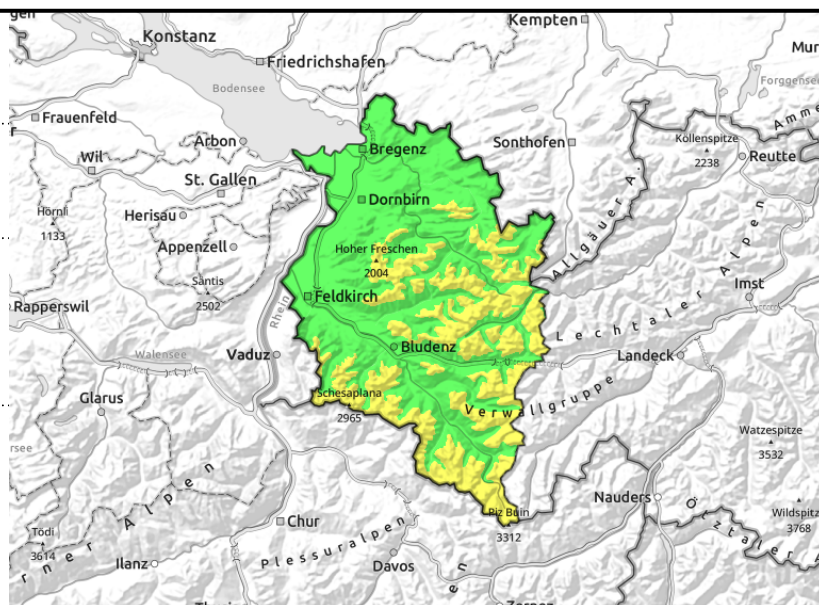
Danger ratings



Expositions



Lechtaler Alpen, Lechquellengebirge, Bregenzerwaldgebirge, Allgäuer Alpen, Verwall, Rätikon West, Rätikon Ost, Silvretta



forestline



fresh, covered snowdrifts in ridgelines, gullies, bowls, increasing with ascending altitude



isolated on smooth grassy slopes, in forest zones

Generally favorable conditions, moderate danger . Still isolated glide-snow avalanches.

Fresh and often blanketed snowdrift accumulations are prone to triggering. Avalanche prone locations are found especially in steep ridgeline terrain, wind-loaded gullies and bowls. They increase in spread and frequency with ascending altitude. Small-to-medium slab avalanches can be triggered even by one single winter sports enthusiast. At intermediate altitudes on smooth grassy slopes and forest clearances which have not yet discharged, glide-snow avalanches are possible at any time of day or night. All areas below glide cracks should be avoided.

Snowpack structure

Yesterday there was a small amount of fresh snow registered amid light wind influence. During the cold and clear night surface hoar formed in places. Loose fresh snow and blanketed drifts from the last 72 hours were often deposited on melt-freeze encrusted and an iced-over snowpack surface. Bonding to it (and also inside the old snowpack itself) is generally good, but worsens with ascending altitude. At intermediate altitudes the snowpack is thoroughly wet down to the ground. At low altitudes and on sunny slopes the snowfall was often deposited on bare, warm ground.

Weather

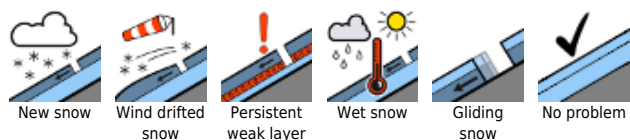
Visibility will swiftly become diffuse but the peaks will remain free. This afternoon the lower border of the cloud cover will descend, a few light snow showers can be expected. Wintery cold. Temperature at 2000 m: -8 degrees. Moderate (this afternoon, brisk) westerly winds at high altitudes.

Outlook

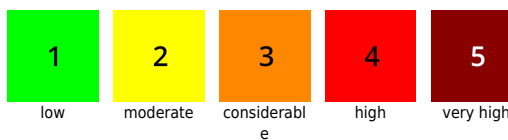
Saturday will be variably cloudy with light snow showers. Intermittent sunshine is also possible. It will remain cold. Avalanche danger levels are not expected to change significantly.

Translated by Jeffrey McCabe, www.creativtrans.com

Avalanche problems



Danger ratings



Expositions

