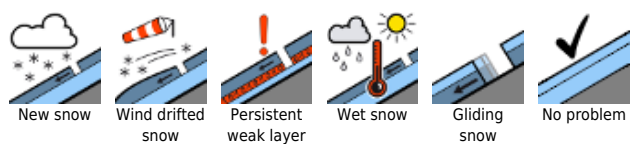


New snow and winds: considerable danger at high altitudes

| | | |
|--|--|--|
| | <p>2000 m Lechtaler Alpen, Lechquellengebirge, Bregenzerwaldgebirge, Allgäuer Alpen, Verwall</p> | |
| | <p>1800 m Silvretta, Rätikon West, Rätikon Ost</p> | |

Avalanche problems



Danger ratings



Expositions



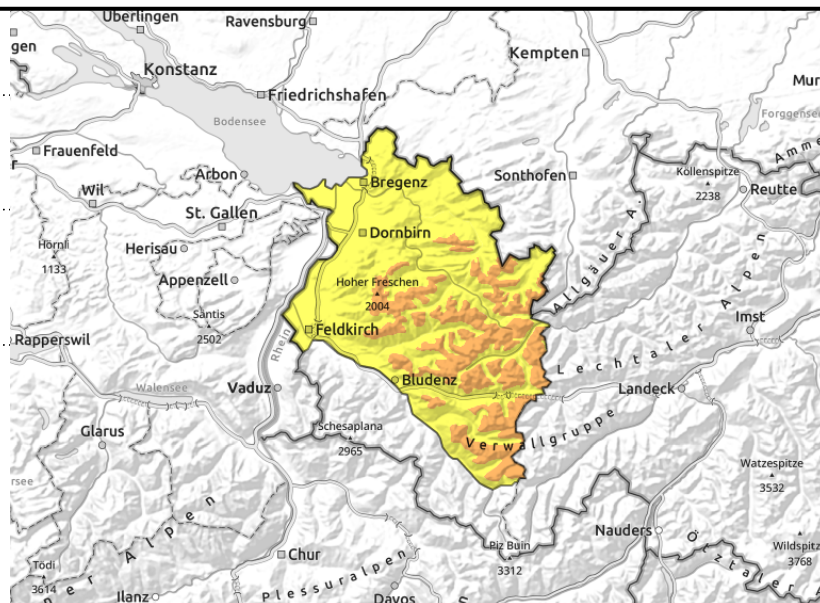
Lechtaler Alpen, Lechquellengebirge, Bregenzerwaldgebirge, Allgäuer Alpen, Verwall



fresh snowdrifts in ridgelines, gullies, bowls, increasing with altitude



vereinzelt an glatten Wiesenhängen und aus Waldschneisen



New snow and fresh snowdrifts: prone to triggering. Still isolated glide-snow avalanches at low altitudes.

Fresh snow and drifts are the main problem. Avalanche prone loations are found especially in steep ridgeline terrain, freshly wind-loaded gullies and bowls. They increase in spread and frequency with ascending altitude. Small-to-medium slab avalanches can be triggered even by one single winter sports enthusiast. Activities in backcountry demand experience in assessing the terrain and dangers on-site.

At intermediate altitudes on smooth grassy slopes and forest clearances which have not yet discharged, glide-snow avalanches are possible at any time of day or night. All areas below glide cracks should be avoided.

Snowpack structure

By early morning today there was 15-20 cm of fresh snow widespread, in Silvretta and Hochtannberg 20-30cm, which was intermittently transported by winds. New snow and snowdrift accumulations of the last 48 hours often were deposited atop a melt-freeze crust or a snowpack surface iced over by rain and wind. Bonding is frequently moderate-to-poor. At intermediate altitudes the snowpack is thoroughly wet down to the ground. At low altitudes and on sunny slopes the warm ground was thoroughly blanketed in snow.

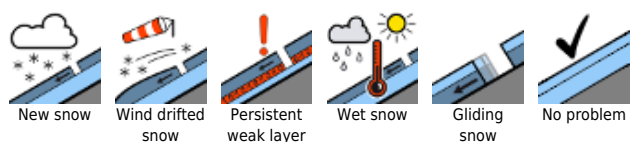
Weather

Heavy clouds will bring light snow showers, fog will be tenacious. Very cold. At 2000 m: -10 degrees. Brisk northerly winds at high altitude, easing this afternoon.

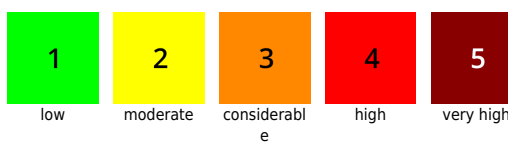
Outlook

Friday will be predominantly overcast. It will remain cold. Avalanche danger will not change significantly.

Avalanche problems



Danger ratings



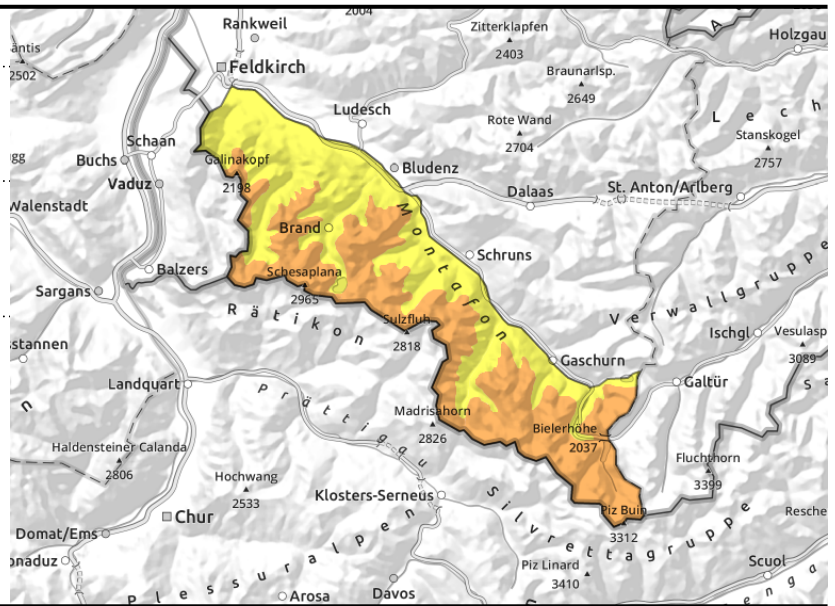
Expositions



Silvretta, Rätikon West, Rätikon Ost



new snow, drifts on ridgeline slopes, in wind-loaded gullies, bowls



New snow and snowdrifts more prone to triggering with ascending altitude

Fresh snow and drifts are the main problem. Avalanche prone loations are found especially in steep ridgeline terrain, freshly wind-loaded gullies and bowls. They increase in spread and frequency with ascending altitude. Small-to-medium slab avalanches can be triggered even by one single winter sports enthusiast. Activities in backcountry demand experience in assessing the terrain and dangers on-site.

At intermediate altitudes on smooth grassy slopes and forest clearances which have not yet discharged, glide-snow avalanches are possible at any time of day or night. All areas below glide cracks should be avoided.

Snowpack structure

By early morning today there was 15-20 cm of fresh snow widespred, in Silvretta and Hochtannberg 20-30cm, which was intermittently transported by winds. New snow and snowdrift accumulations of the last 48 hours often were deposited atop a melt-freeze crust or a snowpack surface iced over by rain and wind. Bonding is frequently moderate-to-poor. At intermediate altitudes the snowpack is thoroughly wet down to the ground. At low altitudes and on sunny slopes the warm ground was thoroughly blanketed in snow.

Weather

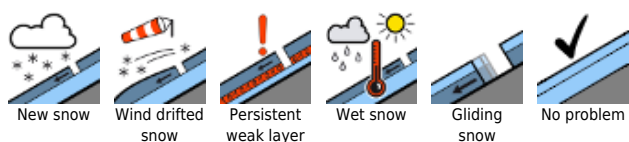
Heavy clouds will bring light snow showers, fog will be tenacious. Very cold. At 2000 m: -10 degrees. Brisk northerly winds at high altitude, easing this afternoon.

Outlook

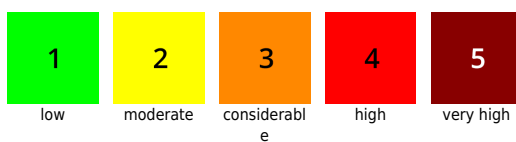
Friday will be predominantly overcast. It will remain cold. Avalanche danger will not change significantly.

Translated by Jeffrey McCabe, www.creativtrans.com

Avalanche problems



Danger ratings



Expositions

