

## Predominantly favorable conditions, mostly low danger (moderate at high altitude)



2400 m

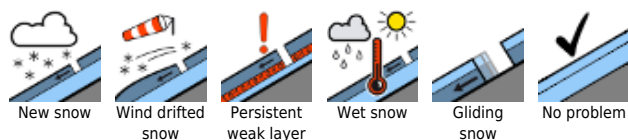
Rätikon Ost, Rätikon West, Verwall, Lechtaler Alpen, Lechquellengebirge, Silvretta



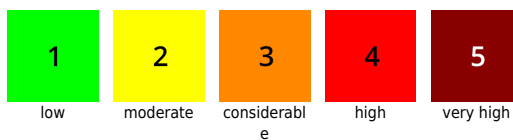
Bregenzerwaldgebirge, Allgäuer Alpen



### Avalanche problems



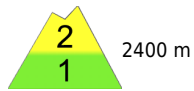
### Danger ratings



### Expositions



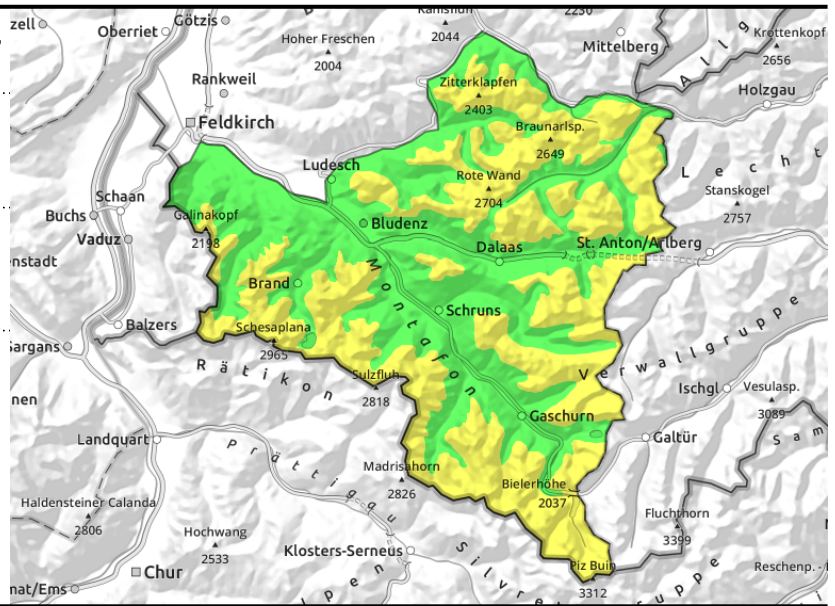
**Rätikon Ost, Rätikon West, Verwall, Lechtaler Alpen, Lechquellengebirge, Silvretta**



small fresh snowdrifts, some accumulations blanketed



smooth grassy slopes, forest clearances



**Frequent fresh and older snowdrifts at high altitude - isolated small-to-medium glide-snow avalanches at low altitude**

Small snowdrift accumulations (fresh and older) are the main problem at high altitude. Such danger zones are located above 2400 m in steep ridgeline terrain, mostly in NW/N/E aspects and in wind-loaded gullies and bowls. Small slab avalanches can be triggered by one sole winter sports enthusiast in places. At low altitude avalanche danger is predominantly low. Isolated small avalanches are possible in extremely steep terrain. Due to the hardened surfaces, the danger of taking a fall should not be underestimated.

At intermediate altitudes on smooth grassy slopes and forest clearances which have not yet discharged, glide-snow avalanches are possible at any time of day or night. All areas below glide cracks should be avoided. In isolated cases avalanches can grow to medium size.

**Snowpack structure**

In general the old snowpack has settled and consolidated well. Snowpack surfaces in many areas are melt-freeze encrusted or iced-over. At high altitudes, isolated older snowdrifts persist, often they are prone to triggering. Small, fresh snowdrifts have been generated whose bonding to the melt-freeze encrusted snowpack is poor. At mid-level inside the snowpack there are still faceted crystals on shady slopes above 2200 m. At intermediate altitudes the snowpack is thoroughly wet down to the ground and has receded in volume. Below 1400 m there is not much snow left on the ground.

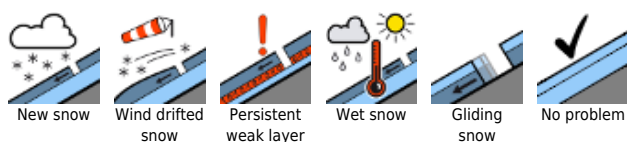
**Weather**

Heavy cloud cover from a warm front are bringing some rainfall and snowfall (above 2100-2400m) to the northern regions. From the Rätikon to Silvretta, strong southerly foehn winds will disperse the cloud somewhat during the daytime. Temperature at 2000m: 3-5 degrees. Strong to stormy SW winds at high altitude.

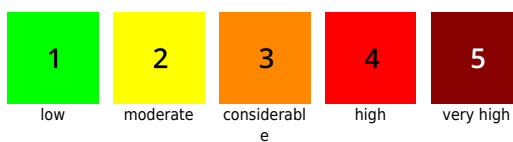
**Outlook**

On Tuesday night a cold front from the northwest will bring lower temperatures and new snow. Depending on the amounts of new snow, avalanche danger could increase.

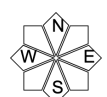
**Avalanche problems**



**Danger ratings**



**Expositions**



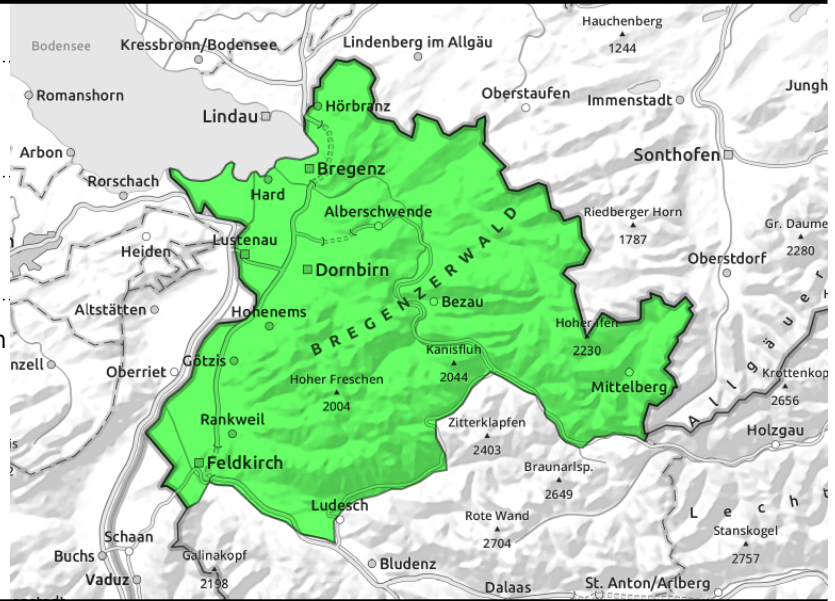
**Bregenzerwaldgebirge, Allgäuer Alpen**



mostly favorable conditions



small glide-snow avalanches on steep grassy slopes



**Predominantly favorable conditions - isolated glide snow avalanches**

Avalanche danger is low by and large. Isolated small triggerings are possible in extremely steep terrain. Due to the hardened surfaces, the risks of taking a fall should not be underestimated. At intermediate altitudes on smooth grass-covered slopes and in forest clearances which have not yet discharged, glide-snow avalanches are possible at any time of day or night. Areas below glide cracks should be avoided.

**Snowpack structure**

The old snowpack has settled and consolidated well in general, the surfaces up to high altitudes are often melt-freeze encrusted or iced-over. Small snowdrift accumulations have been freshly generated, the bonding to the surface is poor. At mid-level inside the snowpack there are frequently faceted crystals on shady slopes above 2200m. At intermediate altitudes the snowpack is thoroughly wet down to the ground and its volume has receded. Below 1400 m there is not much snow on the ground.

**Weather**

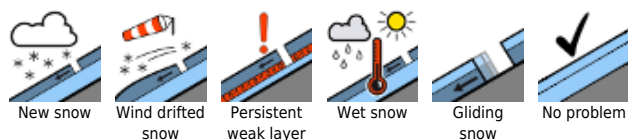
Heavy cloud cover from a warm front are bringing some rainfall and snowfall (above 2100-2400m) to the northern regions. From the Rätikon to Silvretta, strong southerly foehn winds will disperse the cloud somewhat during the daytime. Temperature at 2000m: 3-5 degrees. Strong to stormy SW winds at high altitude.

**Outlook**

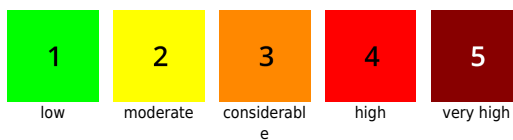
On Tuesday night a cold front from the northwest will bring lower temperatures and new snow. Depending on the amounts of new snow, avalanche danger could increase.

Translated by Jeffrey McCabe, [www.creativtrans.com](http://www.creativtrans.com)

**Avalanche problems**



**Danger ratings**



**Expositions**

