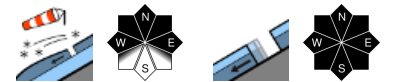


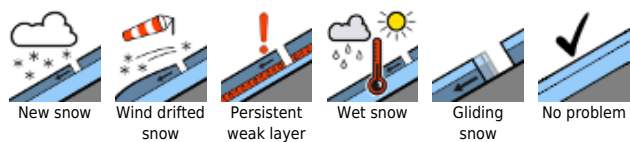
Predominantly favorable conditions, mostly low danger (moderate at high altitude)



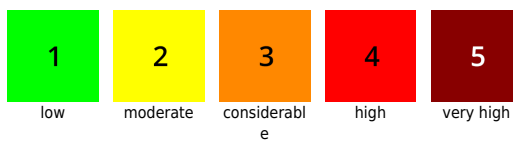
Silvretta, Rätikon Ost, Rätikon West, Verwall, Lechtaler Alpen, Lechquellengebirge, Allgäuer Alpen, Bregenzerwaldgebirge



Avalanche problems



Danger ratings



Expositions



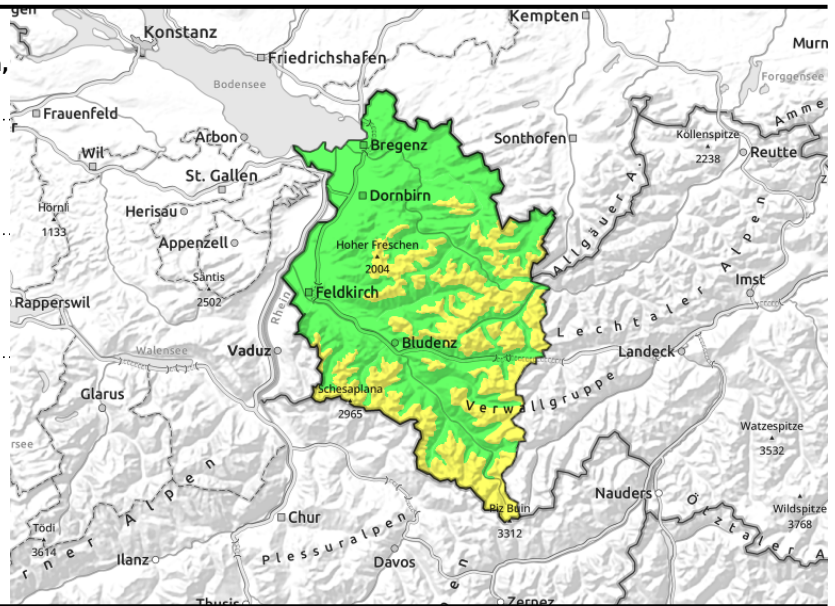
Silvretta, Rätikon Ost, Rätikon West, Verwall, Lechtaler Alpen, Lechquellengebirge, Allgäuer Alpen, Bregenzerwaldgebirge



small fresh snowdrifts, some accumulations blanketed



smooth grassy slopes, forest clearances



Frequent fresh and older snowdrifts at high altitude - isolated small-to-medium glide-snow avalanches at low altitude

Small snowdrift accumulations (fresh and older) are the main problem at high altitude. Such danger zones are located above 2400 m in steep ridgeline terrain, mostly in W/N/E aspects and in wind-loaded gullies and bowls. Small slab avalanches can be triggered by one sole winter sports enthusiast in places. At low altitude avalanche danger is predominantly low. Isolated small avalanches are possible in extremely steep terrain. Due to the hardened surfaces, the danger of taking a fall should not be underestimated.

At intermediate altitudes on smooth grassy slopes and forest clearances which have not yet discharged, glide-snow avalanches are possible at any time of day or night. All areas below glide cracks should be avoided. In isolated cases avalanches can grow to medium size.

Snowpack structure

In general the old snowpack has settled and consolidated well. At high altitudes, isolated older snowdrifts persist, often they are prone to triggering. Small, fresh snowdrifts have been generated whose bonding to the melt-freeze encrusted snowpack is poor. At mid-level inside the snowpack there are still faceted crystals on shady slopes above 2200 m. Up to high altitudes, the snowpack surface is melt-freeze encrusted or iced-over. At intermediate altitudes the snowpack is thoroughly wet down to the ground and has receded in volume. Below 1400 m there is not much snow left on the ground.

Weather

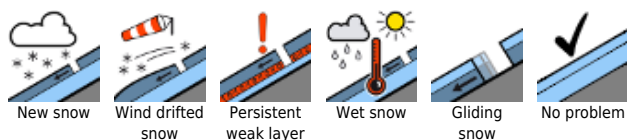
From Hinterwald into the Arlberg region, light snowfall is possible this morning. The snowfall level lies at 1500-1900 m. This afternoon it will be dry everywhere, winds will slacken off, clouds will disperse somewhat, visibility improve. Temperature at 2000 m: 0 degrees. Strong to stormy westerly winds at high altitude, easing somewhat this afternoon.

Outlook

On Tuesday, no significant change is expected. As Wednesday approaches, a cold front will bring precipitation. Depending on the amounts of new snow, avalanche danger could increase significantly.

Translated by Jeffrey McCabe, www.creativtrans.com

Avalanche problems



Danger ratings



Expositions

