

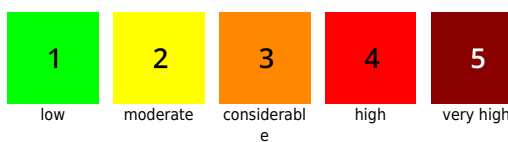
Moderate snowdrift problem above 2400m. Small-to-medium glide-snow avalanches below 2200m. Slight daytime cycle of wet-snow avalanche danger on sunny slopes. Hard snowpack on shady slopes: risk of falls.

	Silvretta, Rätikon Ost, Rätikon West, Verwall, Lechtaler Alpen, Lechquelleengebirge				
	Bregenzwaldgebirge				
	Allgäuer Alpen				

Avalanche problems



Danger ratings



Expositions



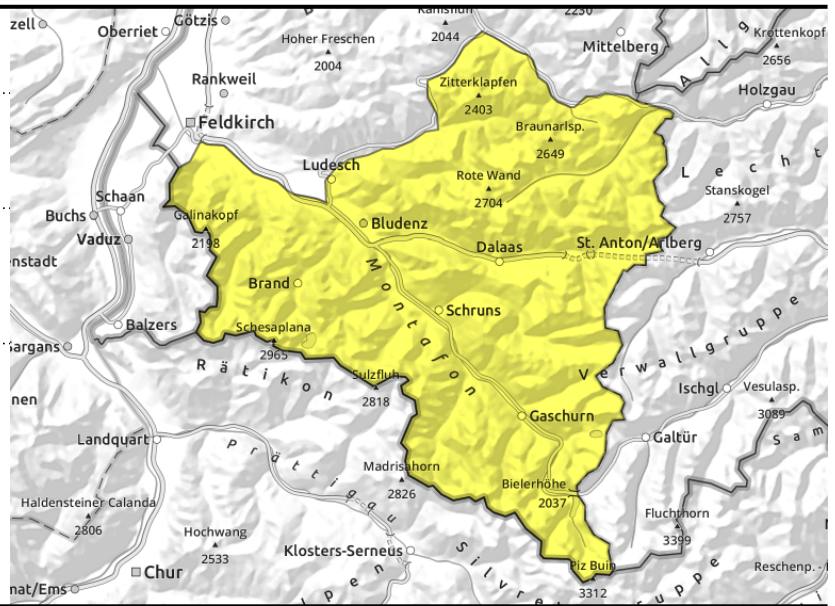
Silvretta, Rätikon Ost, Rätikon West, Verwall, Lechtaler Alpen, Lechquellengebirge



steep slopes, behind protruberances, wind-loaded gullies, bowls



glide-snow and unfolding wet-snow avalanches on steep sunny slopes



Moderate snowdrift problem above 2400m. Glide-snow avalanches, daytime wet-snow avalanches below 2200m.

Older snowdrift accumulations are prone to triggering above 2400m, can be triggered; very isolated avalanches can trigger deeper snowpack layers by large additional loading, especially in transitions from shallow to deeper snow on very steep shady slopes above 2400m. In not direct sunshine the snowpack surface remains hardened, i.e. with risks of taking a fall.

In all expects below 2200m, small-to-medium glide-snow avalanches are possible. Caution urged on slopes with glide cracks. Wet slides and avalanches possible on steep sunny slopes during the course of the day due to solar radiation and daytime warming.

Snowpack structure

The snowpack shows the effects of rain and wind from the last few days. Up to 2200m it is thoroughly wet, up to 2500m it is moist. It is encrusted up to high altitudes or iced over. Due to low air moisture and low sun, the surface softens only minimally, even on sunny slopes, on shady slopes it remains hard. Wet-snow avalanche activity was minor yesterday for that reason. At high and high-alpine altitudes the surfaces bear heavy impact from wind. In isolated cases, older snowdrift accumulations can still be triggered. Due to strong NW winds, fresh, small snowdrifts were generated anew in high alpine regions. In addition, on very steep shady slopes above 2400m there are still weak layers at mid-level of the snowpack in some places: they are prone to triggering.

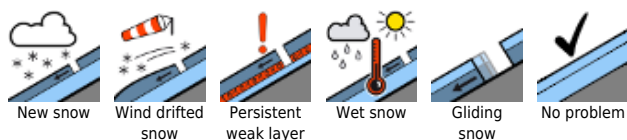
Weather

The high-pressure front is weakening, during the day today high and intermediate level cloudbanks will pass through, but still permit some sunshine. Westerly winds will intensify, temperatures will begin to drop, but it will initially remain dry. Temperature at 2000 m: sinking from 8 to 4 degrees. Westerly winds at high altitude, moderate to start with, stronger later on.

Outlook

Due to a powerful westerly air current, moist air masses will accumulate on the northern flank of the Alps on Monday. In the morning, clouds will dominate, a bit of rainfall (snowfall above 1500-1900 m, depending on wind impact). Avalanche danger could increase somewhat.

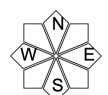
Avalanche problems



Danger ratings



Expositions



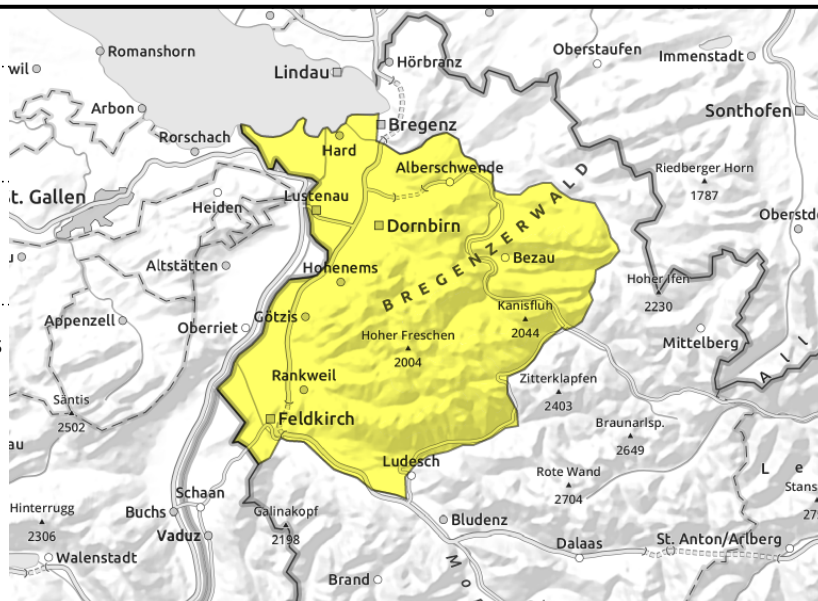
Bregenzerwaldgebirge



caution on slopes with glide cracks



unfolding wet-snow avalanches on steep sunny slopes



Glide-snow and unfolding wet-snow avalanches on steep sunny slopes

Below 2200m in all aspects medium-sized (isolated large-sized) glide-snow avalanches are possible. Caution on slopes with glide cracks. Due to solar radiation and daytime warming, wet slides and avalanches can release on sunny slopes in particular. In terrain not directly in sunshine the snowpack remains hard: risk of taking a fall.

Snowpack structure

The snowpack shows the effects of rain and wind from the last few days. Up to 2200m it is thoroughly wet, up to high altitudes it is encrusted or iced over. Due to the dryness of the air, the snowpack surface softens little on sunny slopes, in the other aspects it remains hard and dry, thus reducing avalanche activity to a minimum yesterday.

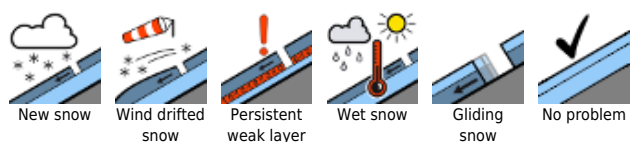
Weather

The high-pressure front is weakening, during the day today high and intermediate level cloudbanks will pass through, but still permit some sunshine. Westerly winds will intensify, temperatures will begin to drop, but it will initially remain dry. Temperature at 2000 m: sinking from 8 to 4 degrees. Westerly winds at high altitude, moderate to start with, stronger later on.

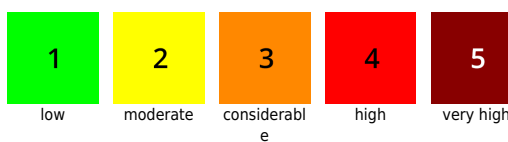
Outlook

Due to a powerful westerly air current, moist air masses will accumulate on the northern flank of the Alps on Monday. In the morning, clouds will dominate, a bit of rainfall (snowfall above 1500-1900 m, depending on wind impact). Avalanche danger could increase somewhat.

Avalanche problems



Danger ratings



Expositions



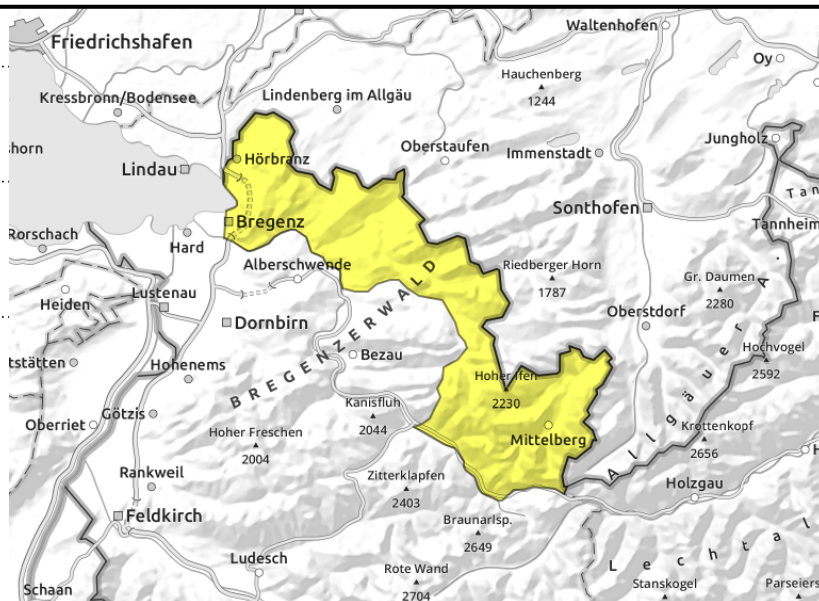
Allgäuer Alpen



steep terrain, behind protruberances, wind-loaded gullies, bowls



glide-snow and unfolding wet-snow avalanches on steep sunny slopes



Moderate snowdrift problem above 2400m. Glide-snow avalanches, daytime wet-snow avalanches below 2200m on steep sunny slopes.

Older snowdrift accumulations are triggerable only above 2400m by large additional loading. In terrain not directly in sunshine the snowpack remains hard: risk of taking a fall. In all aspects below 2200m, medium-sized, in isolated cases large-sized glide-snow avalanches are possible. Caution urged on slopes with glide cracks. Particularly on sunny slopes, wet-snow slides and avalanches are possible in the course of the day due to solar radiation and rising daytime temperatures.

Snowpack structure

The snowpack shows the effects of rain and wind from the last few days. Up to 2200m it is thoroughly wet, up to high altitudes it is encrusted or iced over. Due to the dryness of the air, the snowpack surface softens little on sunny slopes, in the other aspects it remains hard and dry, thus reducing avalanche activity to a minimum yesterday. At high altitudes the surfaces show stark wind impact. Isolated older snowdrift accumulations can still be triggered.

Weather

The high-pressure front is weakening, during the day today high and intermediate level cloudbanks will pass through, but still permit some sunshine. Westerly winds will intensify, temperatures will begin to drop, but it will initially remain dry. Temperature at 2000 m: sinking from 8 to 4 degrees. Westerly winds at high altitude, moderate to start with, stronger later on.

Outlook

Due to a powerful westerly air current, moist air masses will accumulate on the northern flank of the Alps on Monday. In the morning, clouds will dominate, a bit of rainfall (snowfall above 1500-1900 m, depending on wind impact). Avalanche danger could increase somewhat.

Translated by Jeffrey McCabe, www.creativtrans.com

Avalanche problems



Danger ratings



Expositions

