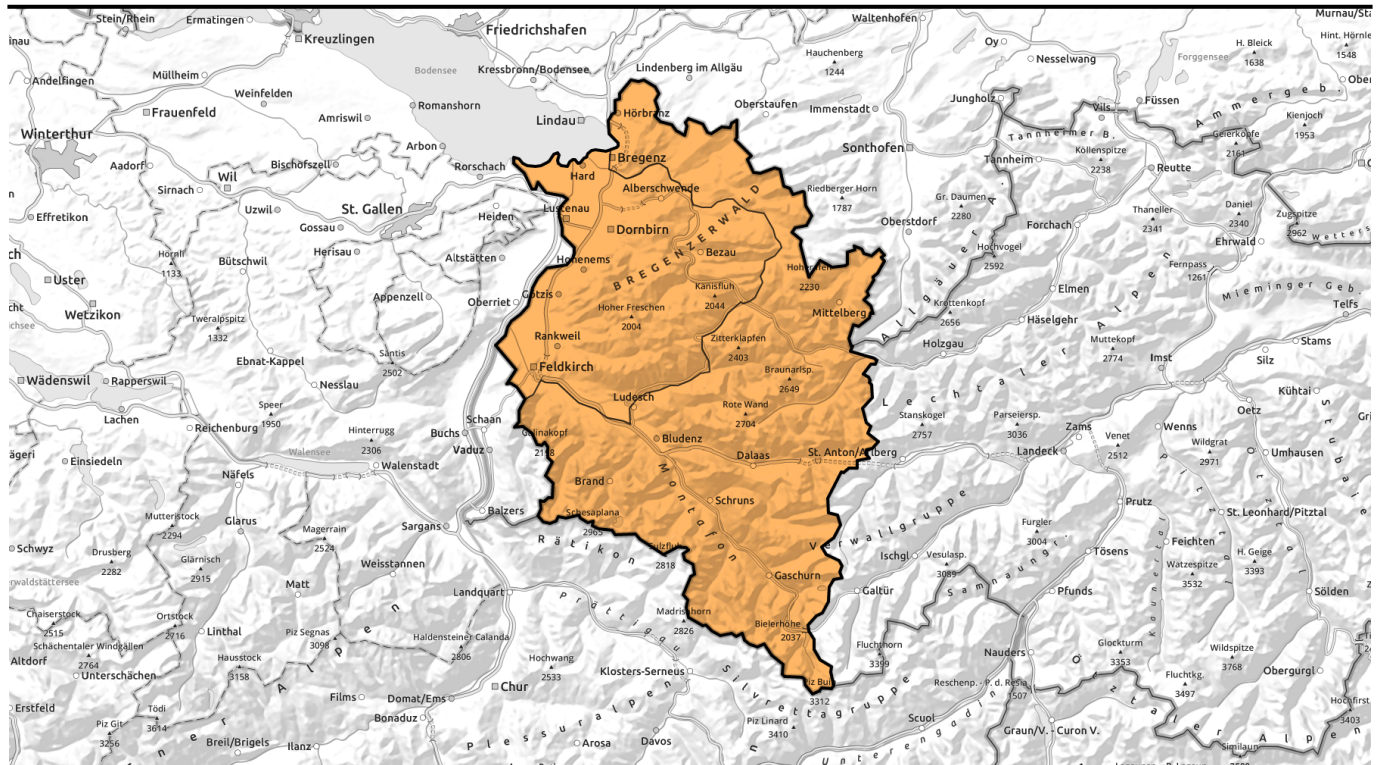


**Recent new snow and snowdrifts trigger-sensitive at high altitudes. Wet-snow+glide-snow avalanches during the day.**

	<p>2300 m Silvretta, Rätikon Ost, Rätikon West, Verwall, Lechtaler Alpen, Lechquellengebirge, Allgäuer Alpen</p>				
	<p>Bregenzerwaldgebirge</p>				

<p><b>Avalanche problems</b></p>	<p><b>Danger ratings</b></p>	<p><b>Expositions</b></p>
New snow Wind drifted snow Persistent weak layer Wet snow Gliding snow No problem	1 low 2 moderate 3 considerable 4 high 5 very high	



## Neu- und Tribschnee der letzten zwei Tage ist in hohen Lagen störanfällig. Nass- und Gleitschneelawinen im Tagesverlauf.



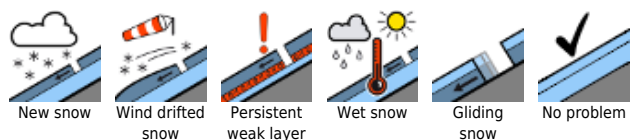
Silvretta, Rätikon Ost, Rätikon West, Verwall, Lechtaler Alpen, Lechquellengebirge, Allgäuer Alpen



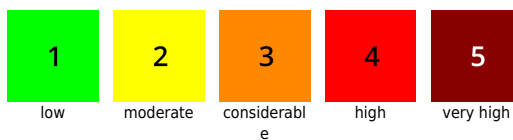
Bregenzerwaldgebirge



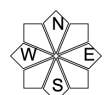
### Avalanche problems



### Danger ratings



### Expositions



Silvretta, Rätikon Ost, Rätikon West, Verwall, Lechtaler Alpen, Lechquellengebirge, Allgäuer Alpen



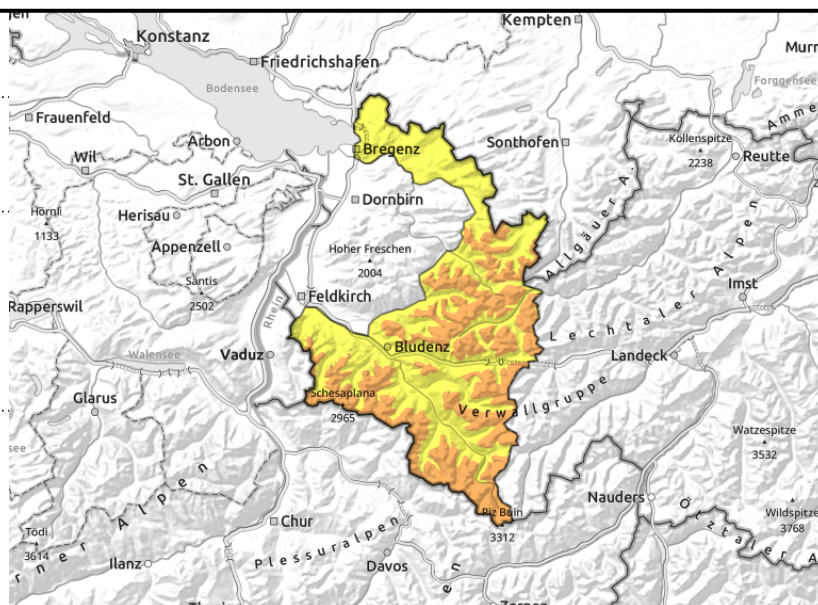
2300 m



esp. above 2200m new-snow and drifts trigger-sensitive; steep terrain, behind protruberances, wind-loaded gullies and bowls



below 2200m daytime glide-snow, wet-snow avalanches, wet slides and avalanches on steep southern high-altitude slopes



## Snowdrift problem above 2300 m. Below 2200 m, daytime wet-snow+glide-snow avalanches

New snow and fresh and older snowdrift accumulations are prone to triggering above 2300m, can be triggered even by minimum additional loading and unleash dangerously large-sized avalanches. Avalanche prone locations are found in steep terrain in all aspects, behind protruberances and in wind-loaded gullies and bowls. Spread and frequency of danger zones increase with ascending altitude. If avalanches fracture down to deeper layers of the snowpack they can grow to dangerously large size.

Below 2200 m wet-snow avalanches can trigger naturally due to warmth and solar radiation or be triggered by winter sports enthusiasts. On steep south-facing slopes, wet slides and avalanches can release even at high altitudes. Furthermore, glide-snow avalanches can occur at any time of day or night. Caution on slopes where there are glide cracks.

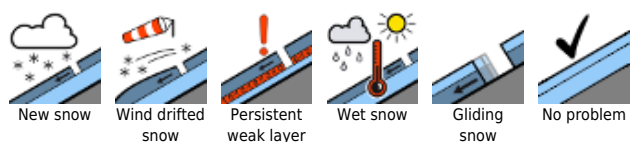
### Snowpack structure

The intensive persistent rainfall up to 2200 m weakened the snowpack as it became thoroughly wet. Following a night of nearly clear skies, a melt-freeze crust formed which will swiftly soften during the day (solar radiation, zero-degree level at 3300m). The rain and mild temperatures have helped the snowpack to quickly settle. At high altitudes where there was no rain (above 2300m) the snowpack is stabilizing more slowly. Through stormy W/NW winds the snow was intensively transported on both days, new snowdrift accumulations formed also distant from ridgelines. Brisk to strong W/NW winds have generated snowdrift accumulations at high and high-alpine altitudes which are prone to triggering. The transported snow was deposited on wind crusts, melt-freeze crusts or atop older snowdrifts, on high altitude shady slopes also on loose, powdery layers, making it prone to triggering. On south-facing slopes, bonding to the old snowpack is better. In addition, on very steep high-altitude shady slopes there are weak layers at mid-level inside the snowpack in some places: they are prone to triggering.

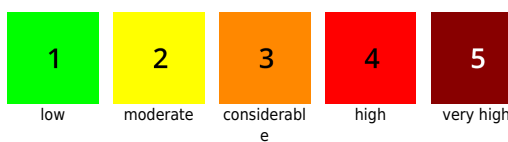
### Weather

A high-pressure front determines weather conditions today. Following a night of nearly clear skies, today will be cloudless. Sunshine will dominate, wind still present, extremely mild (zero-degree level

#### Avalanche problems



#### Danger ratings



#### Expositions



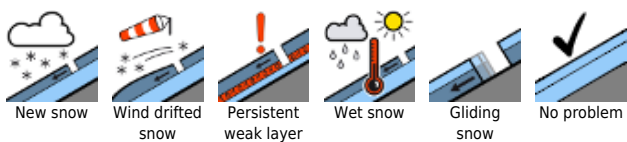
## 31.12.2021, morning

at 3300 m). Temperature at 2000 m: +8 degrees! Brisk to strong W/NW winds at high altitude.

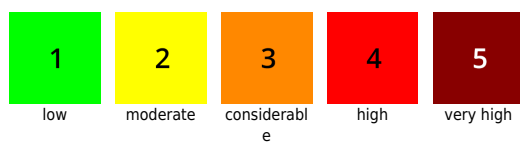
### Outlook

The sequence of daytime warming and nighttime outgoing radiation has helped stabilize the snowpack. At high altitudes the snowpack is also settling, avalanche danger is receding.

#### Avalanche problems



#### Danger ratings



#### Expositions



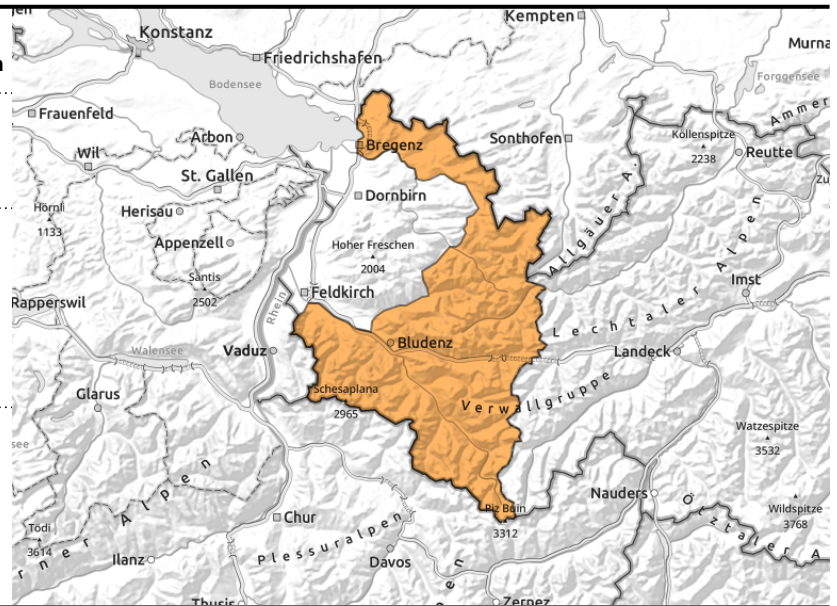
Silvretta, Rätikon Ost, Rätikon West, Verwall, Lechtaler Alpen, Lechquellengebirge, Allgäuer Alpen



esp. above 2200m new-snow and drifts trigger-sensitive; steep terrain, behind protruberances, wind-loaded gullies and bowls



below 2200m daytime glide-snow, wet-snow avalanches, wet slides and avalanches on steep southern high-altitude slopes



## Snowdrift problem above 2300 m. Below 2200 m, daytime wet-snow+glide-snow avalanches

New snow and fresh and older snowdrift accumulations are prone to triggering above 2300m, can be triggered even by minimum additional loading and unleash dangerously large-sized avalanches. Avalanche prone locations are found in steep terrain in all aspects, behind protruberances and in wind-loaded gullies and bowls. Spread and frequency of danger zones increase with ascending altitude. If avalanches fracture down to deeper layers of the snowpack they can grow to dangerously large size.

Below 2200 m wet-snow avalanches can trigger naturally due to warmth and solar radiation or be triggered by winter sports enthusiasts. On steep south-facing slopes, wet slides and avalanches can release even at high altitudes. Furthermore, glide-snow avalanches can occur at any time of day or night. Caution on slopes where there are glide cracks.

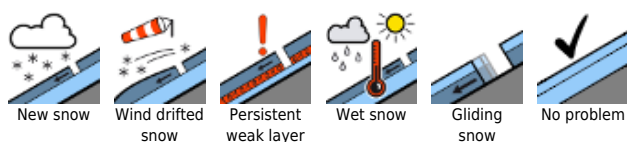
### Snowpack structure

The intensive persistent rainfall up to 2200 m weakened the snowpack as it became thoroughly wet. Following a night of nearly clear skies, a melt-freeze crust formed which will swiftly soften during the day (solar radiation, zero-degree level at 3300m). The rain and mild temperatures have helped the snowpack to quickly settle. At high altitudes where there was no rain (above 2300m) the snowpack is stabilizing more slowly. Through stormy W/NW winds the snow was intensively transported on both days, new snowdrift accumulations formed also distant from ridgelines. Brisk to strong W/NW winds have generated snowdrift accumulations at high and high-alpine altitudes which are prone to triggering. The transported snow was deposited on wind crusts, melt-freeze crusts or atop older snowdrifts, on high altitude shady slopes also on loose, powdery layers, making it prone to triggering. On south-facing slopes, bonding to the old snowpack is better. In addition, on very steep high-altitude shady slopes there are weak layers at mid-level inside the snowpack in some places: they are prone to triggering.

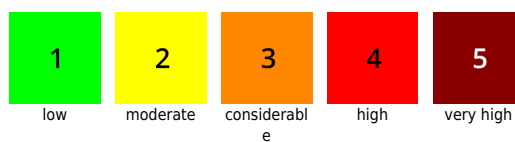
### Weather

A high-pressure front determines weather conditions today. Following a night of nearly clear skies, today will be cloudless. Sunshine will dominate, wind still present, extremely mild (zero-degree level

#### Avalanche problems



#### Danger ratings



#### Expositions



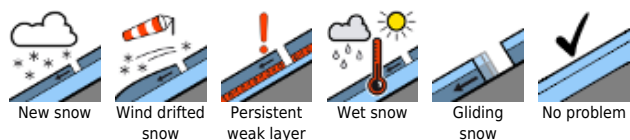
## 31.12.2021, afternoon

at 3300 m). Temperature at 2000 m: +8 degrees! Brisk to strong W/NW winds at high altitude.

### Outlook

The sequence of daytime warming and nighttime outgoing radiation has helped stabilize the snowpack. At high altitudes the snowpack is also settling, avalanche danger is receding.

#### Avalanche problems



#### Danger ratings



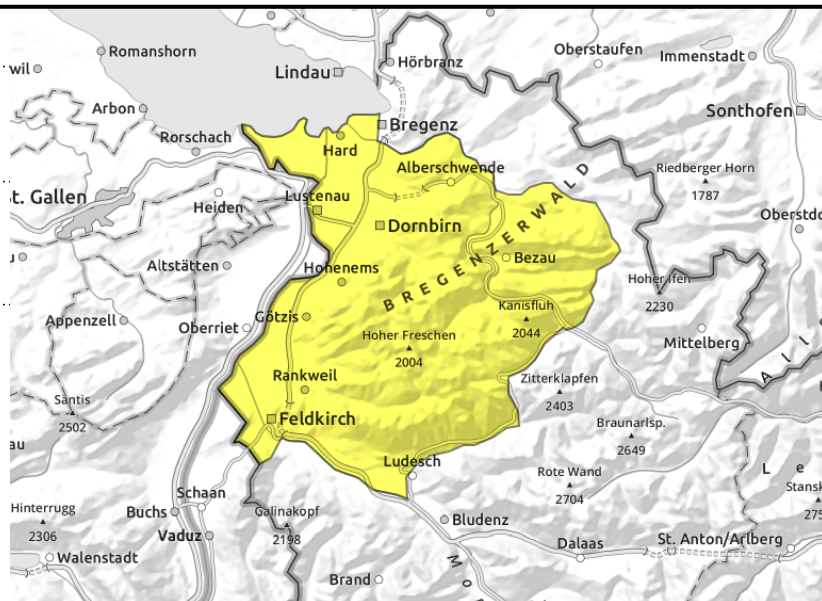
#### Expositions



## Bregenzerwaldgebirge



daytime glide-snow+wet-snow  
avalanches below 2200 m



## Daytime glide-snow+wet-snow avalanches

Below 2200m wet-snow avalanches can release naturally as a result of solar radiation and high temperatures or (in extremely steep terrain) be triggered by winter sports enthusiasts. On steep south-facing slopes, wet slides and avalanches can trigger even at high altitude. In addition, glide-snow avalanches are possible at any time of day or night. Caution urged on slopes with glide cracks.

### Snowpack structure

The intensive persistent rainfall up to 2200 m weakened the snowpack as it became thoroughly wet. Following a night of nearly clear skies, a melt-freeze crust formed which will swiftly soften during the day (solar radiation, zero-degree level at 3300m). The rain and mild temperatures have helped the snowpack to quickly settle.

### Weather

A high-pressure front determines weather conditions today. Following a night of nearly clear skies, today will be cloudless. Sunshine will dominate, wind still present, extremely mild (zero-degree level at 3300 m). Temperature at 2000 m: +8 degrees! Brisk to strong W/NW winds at high altitude.

### Outlook

The sequence of daytime warming and nighttime outgoing radiation has helped stabilize the snowpack. At high altitudes the snowpack is also settling, avalanche danger is receding.

### Avalanche problems



### Danger ratings



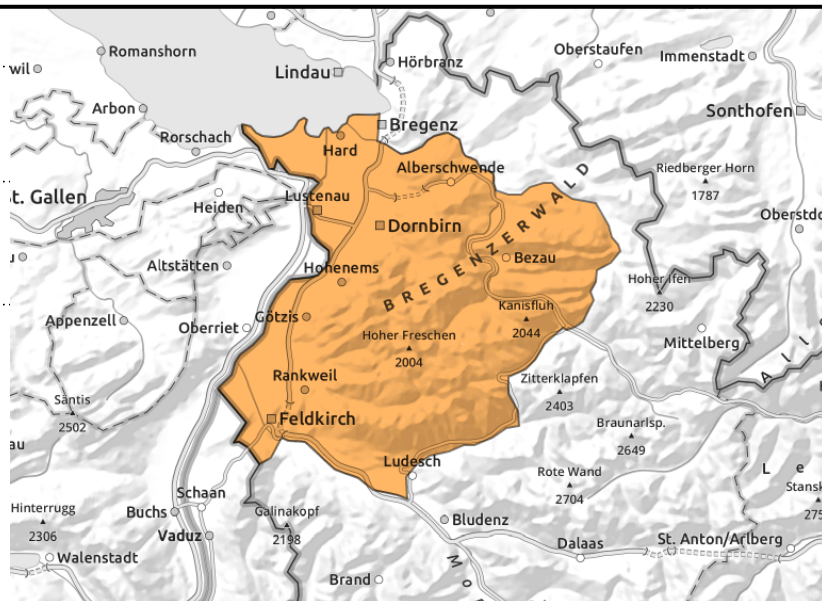
### Expositions



## Bregenzerwaldgebirge



daytime glide-snow+wet-snow  
avalanches below 2200 m



## Daytime glide-snow+wet-snow avalanches

Below 2200m wet-snow avalanches can release naturally as a result of solar radiation and high temperatures or (in extremely steep terrain) be triggered by winter sports enthusiasts. On steep south-facing slopes, wet slides and avalanches can trigger even at high altitude. In addition, glide-snow avalanches are possible at any time of day or night. Caution urged on slopes with glide cracks.

### Snowpack structure

The intensive persistent rainfall up to 2200 m weakened the snowpack as it became thoroughly wet. Following a night of nearly clear skies, a melt-freeze crust formed which will swiftly soften during the day (solar radiation, zero-degree level at 3300m). The rain and mild temperatures have helped the snowpack to quickly settle.

### Weather

A high-pressure front determines weather conditions today. Following a night of nearly clear skies, today will be cloudless. Sunshine will dominate, wind still present, extremely mild (zero-degree level at 3300 m). Temperature at 2000 m: +8 degrees! Brisk to strong W/NW winds at high altitude.

### Outlook

The sequence of daytime warming and nighttime outgoing radiation has helped stabilize the snowpack. At high altitudes the snowpack is also settling, avalanche danger is receding.

Translated by Jeffrey McCabe, [www.creativtrans.com](http://www.creativtrans.com)

### Avalanche problems



### Danger ratings



### Expositions

