

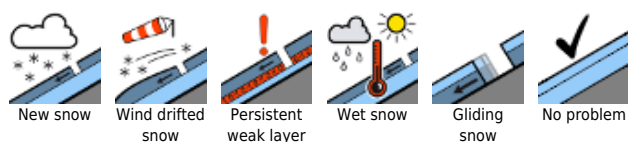
**Considerable danger of dry-snow avalanches, this afternoon wet-snow avalanches due to new snow, rain, storm. As precipitation intensifies, danger levels will rise further.**



Silvretta, Rätikon Ost, Rätikon West, Verwall, Lechtaler Alpen, Lechquellengebirge, Bregenzeralpen, Allgäuer Alpen



**Avalanche problems**

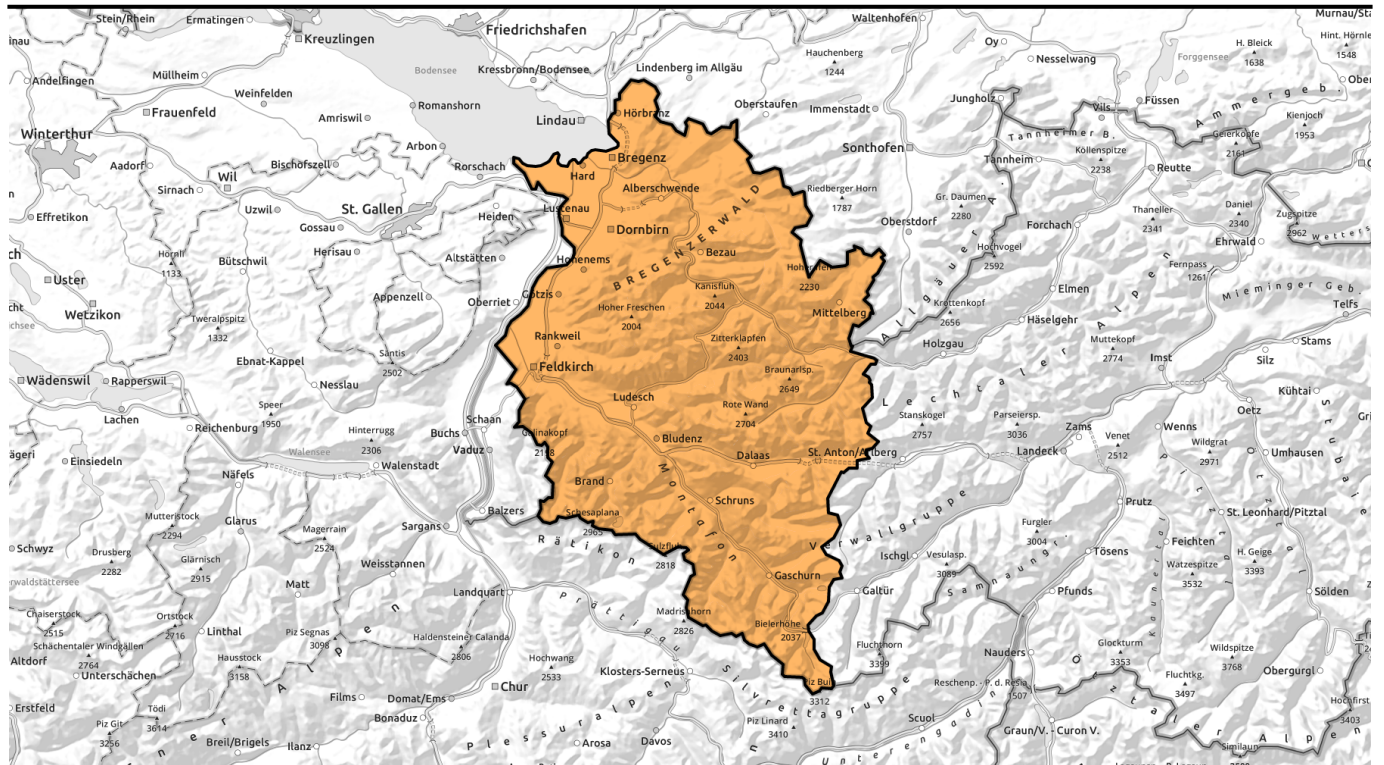


**Danger ratings**



**Expositions**





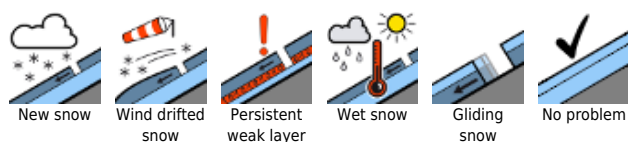
**Mit Neuschnee, Regen und Sturm erhebliche Gefahr von trockenen und am Nachmittag von nassen Lawinen. Mit der Intensivierung der Niederschläge steigt die Lawinengefahr weiter an.**



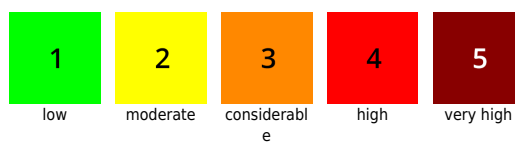
Silvretta, Rätikon Ost, Rätikon West, Verwall, Lechtaler Alpen, Lechquellengebirge, Bregenzerwaldgebirge, Allgäuer Alpen



**Avalanche problems**



**Danger ratings**



**Expositions**



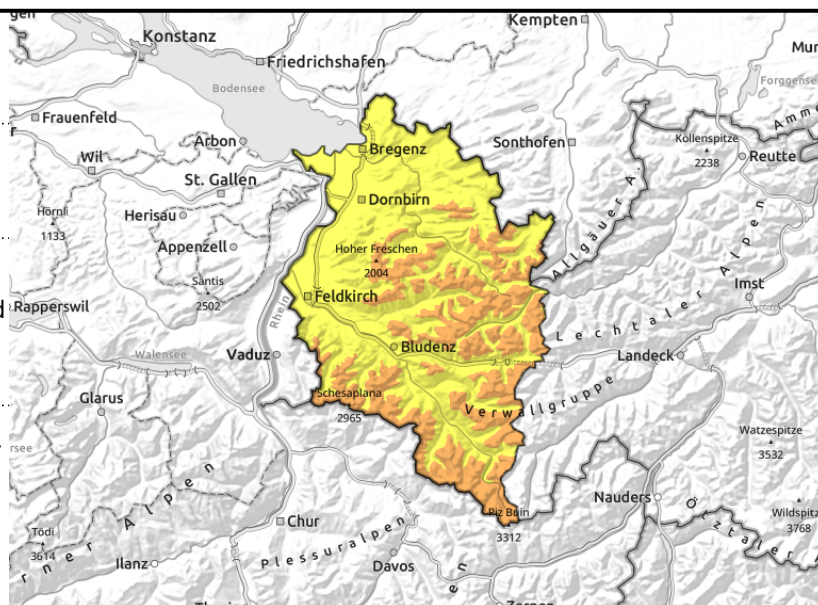
**Silvretta, Rätikon Ost, Rätikon West, Verwall, Lechtaler Alpen, Lechquellengebirge, Brengenerwaldgebirge, Allgäuer Alpen**



new snow/ snowdrifts prone to triggering, steep slopes, behind protruberances, wind-loaded gullies, bowls



daytime rise in danger of glide-snow, wet-snow avalanches due to higher temperatures, rain impact



**Increase in danger of wet-snow+glide-snow avalanches due to fresh snow, storm winds, high-altitude snowdrifts, intense rain this afternoon**

Fresh snow and fresh snowdrifts are prone to triggering, can be triggered even by minimum additional loading. Avalanche prone locations are located in steep terrain in all aspects, behind protruberances, in wind-loaded gullies and bowls. Spread and frequency of danger zones will increase during the course of the day and with ascending altitude. On high altitude very steep shady slopes and in extremely steep terrain isolated small-sized slab avalanches can be triggered by large additional loading in transition zones from shallow to deep snow, e.g. at entries into gullies and bowls or in spots where the snow is shallow. Naturally triggered avalanches likeliest in the afternoon. Due to mild temperatures and intensive rain impact this afternoon, the danger of glide-snow and wet-snow avalanches will increase below 2200 m in all aspects during the course of the day.

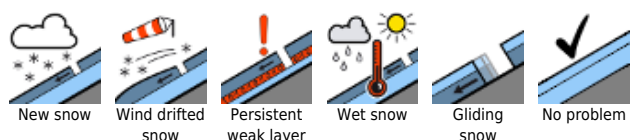
**Snowpack structure**

During the last 24 hours there has been 10-15 cm of fresh snow above 1600 m. By tomorrow morning, another 10-30 cm will be added to it above 2000-2200 m. The new snow will be intensively transported by strong-to-stormy W/NW winds, large-sized snowdrift accumulations will be generated far distant from ridgelines. New snow and drifts will be deposited on wind crusts or melt-freeze crusts and atop the drifts generated on Tuesday, on high-altitude shady slopes often atop loose and powdery layers which are prone to triggering. At intermediate altitudes and on south-facing slopes, bonding to the old snowpack surface is better. Furthermore, on high-altitude very steep shady slopes there are often weak layers at mid-level inside the snowpack or older drifts which are trigger-sensitive. At low and intermediate altitudes the snowpack has been further weakened by higher temperatures and rain influence. As of afternoon, rainfall up to 2200 m will make the snowpack thoroughly wet.

**Weather**

Dry this morning, but clouds will not disperse much. Starting at midday cloud cover will become dense, increasing fog, and gradually heavy precipitation will set in. Rainfall will extend up to 2000 m, snowfall in high alpine regions. Temperature at 2000 m: rising from -3 to +3 degrees. Strong to stormy westerly winds at high altitude, later shifting to northwesterly.

**Avalanche problems**



**Danger ratings**



**Expositions**

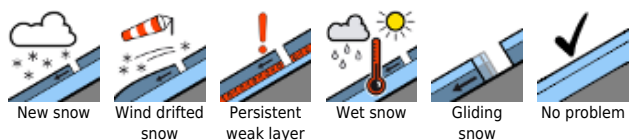


# 29.12.2021, morning

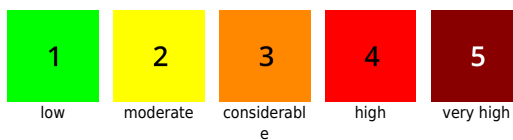
## Outlook

As a result of a warm front the snowfall level will ascend to 2500 m on Wednesday night, so large amounts of fresh snow are only to be expected at high altitudes. The avalanche situation will remain tense.

### Avalanche problems



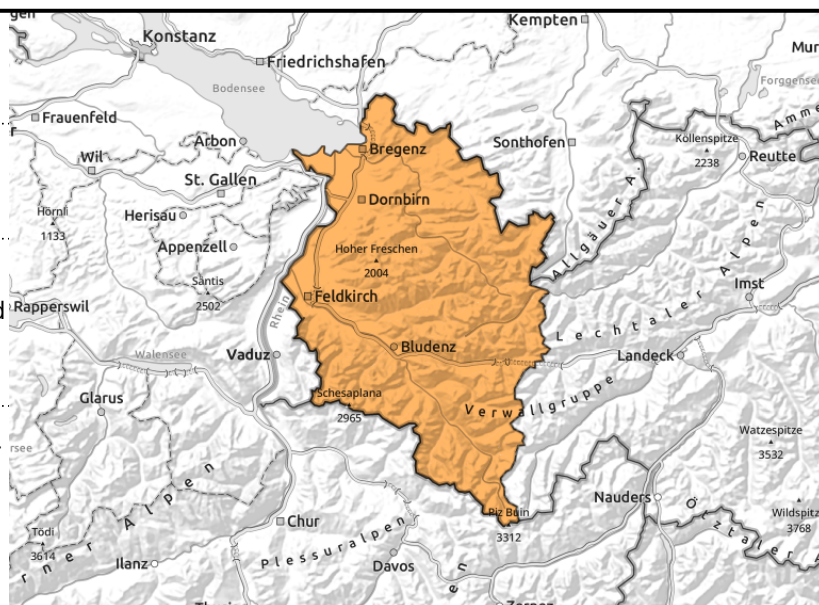
### Danger ratings



### Expositions



Silvretta, Rätikon Ost, Rätikon West, Verwall, Lechtaler Alpen, Lechquellengebirge, Brengenerwaldgebirge, Allgäuer Alpen



new snow/ snowdrifts prone to triggering, steep slopes, behind protruberances, wind-loaded gullies, bowls



daytime rise in danger of glide-snow, wet-snow avalanches due to higher temperatures, rain impact

## Increase in danger of wet-snow+glide-snow avalanches due to fresh snow, storm winds, high-altitude snowdrifts, intense rain this afternoon

Fresh snow and fresh snowdrifts are prone to triggering, can be triggered even by minimum additional loading. Avalanche prone locations are located in steep terrain in all aspects, behind protruberances, in wind-loaded gullies and bowls. Spread and frequency of danger zones will increase during the course of the day and with ascending altitude. On high altitude very steep shady slopes and in extremely steep terrain isolated small-sized slab avalanches can be triggered by large additional loading in transition zones from shallow to deep snow, e.g. at entries into gullies and bowls or in spots where the snow is shallow. Naturally triggered avalanches likeliest in the afternoon. Due to mild temperatures and intensive rain impact this afternoon, the danger of glide-snow and wet-snow avalanches will increase below 2200 m in all aspects during the course of the day.

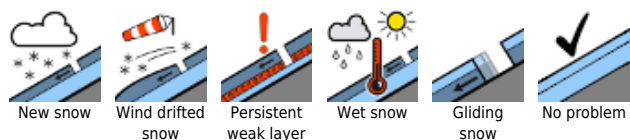
### Snowpack structure

During the last 24 hours there has been 10-15 cm of fresh snow above 1600 m. By tomorrow morning, another 10-30 cm will be added to it above 2000-2200 m. The new snow will be intensively transported by strong-to-stormy W/NW winds, large-sized snowdrift accumulations will be generated far distant from ridgelines. New snow and drifts will be deposited on wind crusts or melt-freeze crusts and atop the drifts generated on Tuesday, on high-altitude shady slopes often atop loose and powdery layers which are prone to triggering. At intermediate altitudes and on south-facing slopes, bonding to the old snowpack surface is better. Furthermore, on high-altitude very steep shady slopes there are often weak layers at mid-level inside the snowpack or older drifts which are trigger-sensitive. At low and intermediate altitudes the snowpack has been further weakened by higher temperatures and rain influence. As of afternoon, rainfall up to 2200 m will make the snowpack thoroughly wet.

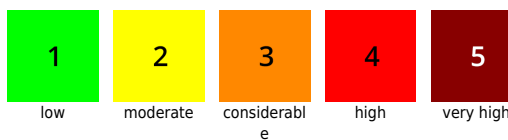
### Weather

Dry this morning, but clouds will not disperse much. Starting at midday cloud cover will become dense, increasing fog, and gradually heavy precipitation will set in. Rainfall will extend up to 2000 m, snowfall in high alpine regions. Temperature at 2000 m: rising from -3 to +3 degrees. Strong to stormy westerly winds at high altitude, later shifting to northwesterly.

#### Avalanche problems



#### Danger ratings



#### Expositions



## 29.12.2021, afternoon

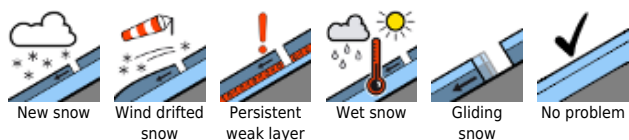
### Outlook

As a result of a warm front the snowfall level will ascend to 2500 m on Wednesday night, so large amounts of fresh snow are only to be expected at high altitudes. The avalanche situation will remain tense.

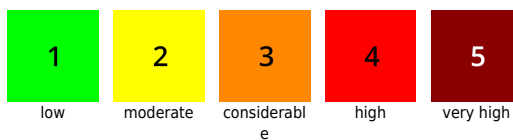
Translated by Jeffrey McCabe, [www.creativtrans.com](http://www.creativtrans.com)

---

#### Avalanche problems



#### Danger ratings



#### Expositions

