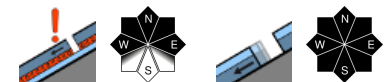


## Moderate avalanche danger on high shady slopes, elsewhere mostly low danger



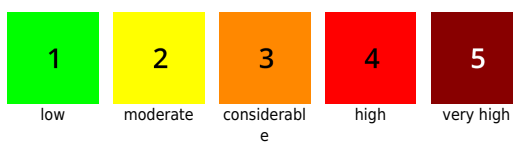
Rätikon West, Rätikon Ost, Silvretta, Verwall, Allgäuer Alpen, Lechtaler Alpen, Bregenzerwaldgebirge, Lechquellengebirge



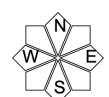
### Avalanche problems



### Danger ratings



### Expositions

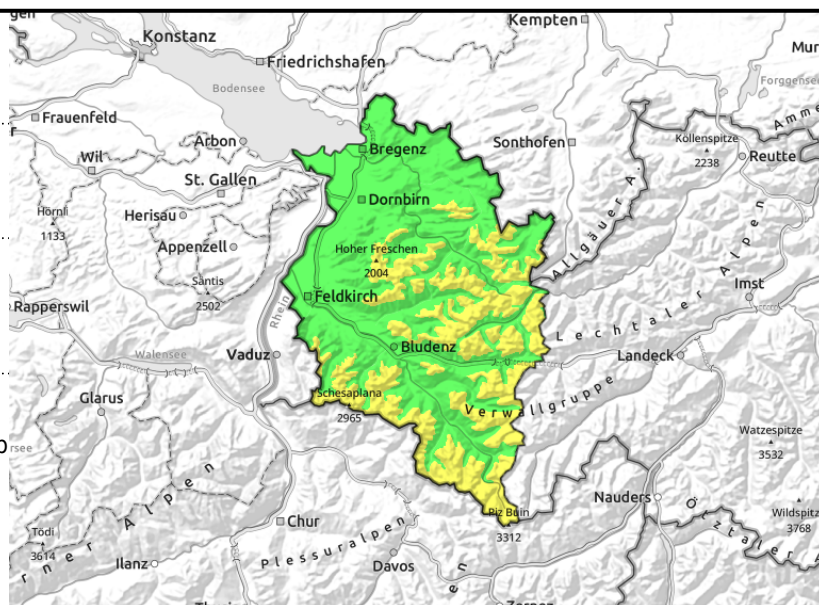


**Rätikon West, Rätikon Ost, Silvretta, Verwall, Allgäuer Alpen, Lechtaler Alpen, Bregenzerwaldgebirge, Lechquellengebirge**



very steep shady slopes >2200m, transitions from shallow to deep snow

small, isolated medium-sized glide-snow avalanches on steep grassy slopes



## Old snow often weak on steep shady slopes. Isolated glide-snow avalanches.

Favourable conditions prevail by and large. On high-altitude steep and shady slopes, weak layers at ground level can still be triggered in some places. Small-to-medium sized slab avalanches can be triggered especially by large additional loading in transitions from shallow to deep snow, e.g. at entries into gullies and bowls. In ridgeline terrain small fresh snowdrift accumulations require caution. In areas with "low" danger are isolated danger zones for dry-snow avalanches on extremely steep shady slopes. The peril of being swept along and forced to fall require attentiveness. Particularly in regions where snowfall has been heaviest, isolated small-to-medium sized glide snow avalanches are possible on steep grassy slopes which have not yet discharged. Cracks in the snowpack are red flags.

### Snowpack structure

The snowpack on most steep slopes is well consolidated and stable, but on high-altitude very steep slopes there are frequently covered weak layers of faceted crystals which are triggerable. On north-facing slopes and zones where the solar radiation is flat, the uppermost layers are generally still loose and powdery, cold-induced. There is often surface hoar. On steep sunny slopes there is often a thin melt-freeze crust. At low and intermediate altitudes the snowpack is moist, which furthers the gliding movements of the snowpack. Small freshly generated snowdrifts in ridgeline terrain become more prone to triggering with ascending altitude.

### Weather

Sunny weather will dominate, good visibility, a few high-altitude clouds will not impair it. Temperature at 2000 m: -2 degrees. Moderate to brisk NW winds at high altitude.

### Outlook

Also on Wednesday it will be sunny. Starting on Thursday, temperatures will rise. Until then, no significant change in avalanche danger.

Translated by Jeffrey McCabe, [www.creativtrans.com](http://www.creativtrans.com)

#### Avalanche problems



#### Danger ratings



#### Expositions

