

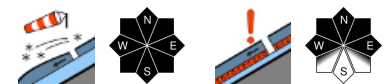
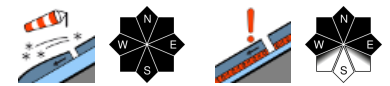
## High avalanche danger regionally. Treacherous situation widespread for winter sports enthusiasts.



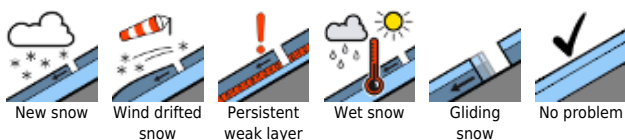
Bregenzerwaldgebirge, Rätikon West, Rätikon Ost, Silvretta, Verwall



Allgäuer Alpen, Lechtaler Alpen, Lechquellengebirge



### Avalanche problems



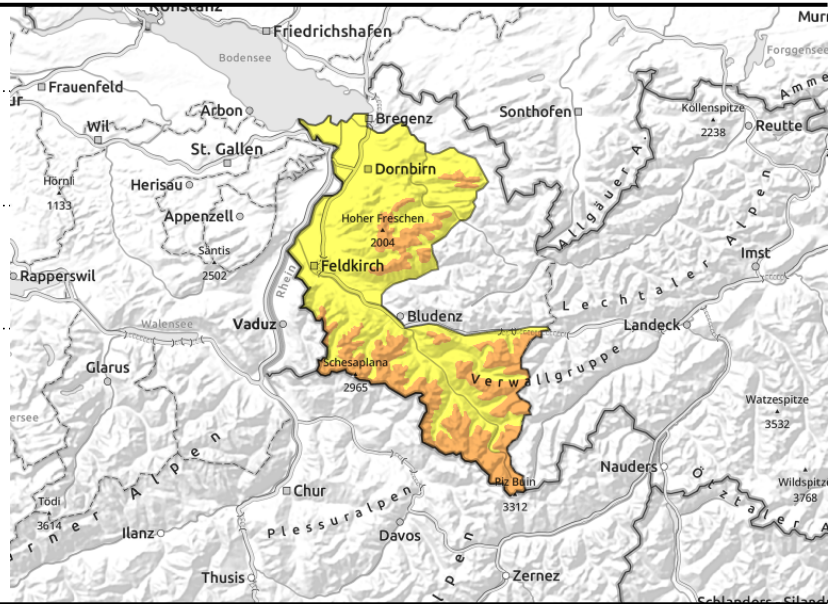
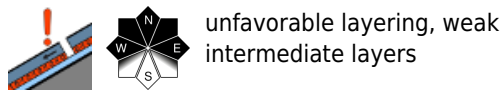
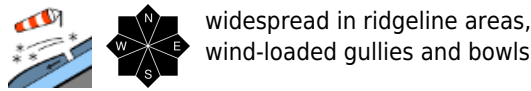
### Danger ratings



### Expositions



**Bregenzerwaldgebirge, Rätikon West, Rätikon Ost, Silvretta, Verwall**



**Fresh drifts, often weak layering. Increasingly frequent glide-snow avalanches**

Fresh snow and drifts are increasingly prone to triggering with ascending altitude, can release even with minimum additional loading. Avalanche prone locations are found particularly above the timberline, in steep ridgeline terrain and in wind-loaded gullies and bowls. As winds intensify, fresh snowdrift accumulations are formed and danger zones become more frequent and larger-sized. Activities beyond secured ski slopes require experience in avalanche assessment on-site. In addition, at high altitude shady steep terrain, weak ground level layers can trigger in transition zones from deep to shallow snow by large additional loading in particular. If avalanches fracture down to deeper layers of the snowpack they can grow to large size. Exposed zones can be placed at risk. At low and intermediate altitudes on steep grass-covered slopes, in forest clearances and on hillsides, increasingly frequent naturally triggered glide-snow avalanches are possible.

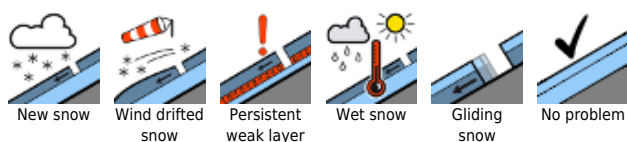
**Snowpack structure**

There was another 10-15 cm of fresh snow registered widespread, in the Arlberg region up to 25 cm. Amid intermittently storm-strength winds the snow was transported, and danger zones increased particularly above the treeline. Fresh snow and drifts of recent days were deposited on top of a loosely-packed, in some spots bonded and consolidated and rain-encrusted, settled snowpack up to about 1800 m, which furthers gliding movement of the snowpack over smooth ground. Bonding inside the upper layers, often riddled with graupel, and to the old snowpack is moderate to poor, making it prone to triggering. At mid-level of the snowpack on high-altitude shady slopes, faceted crystals are evident. There is currently only limited data available from high altitude zones.

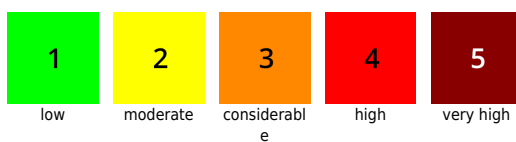
**Weather**

Wintery conditions, poor visibility, low temperatures, more snow showers, particularly in the Bregenzerwald and Arlberg regions a few additional centimetres of new snow is expected. Temperature at 2000 m: -9 degrees. High-altitude winds brisk to strong from the west, shifting to northerly.

**Avalanche problems**



**Danger ratings**



**Expositions**

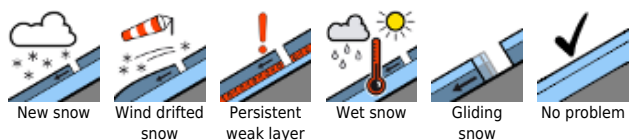


# 11.12.2021

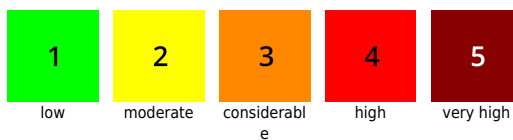
## Outlook

Snow showers will come to an end tonight. Sunday will begin quite sunny, During the day, cloud cover will increase and it will be very windy. The avalanche situation will continue to be tense.

### Avalanche problems



### Danger ratings



### Expositions



**Allgäuer Alpen, Lechtaler Alpen, Lechquellengebirge**



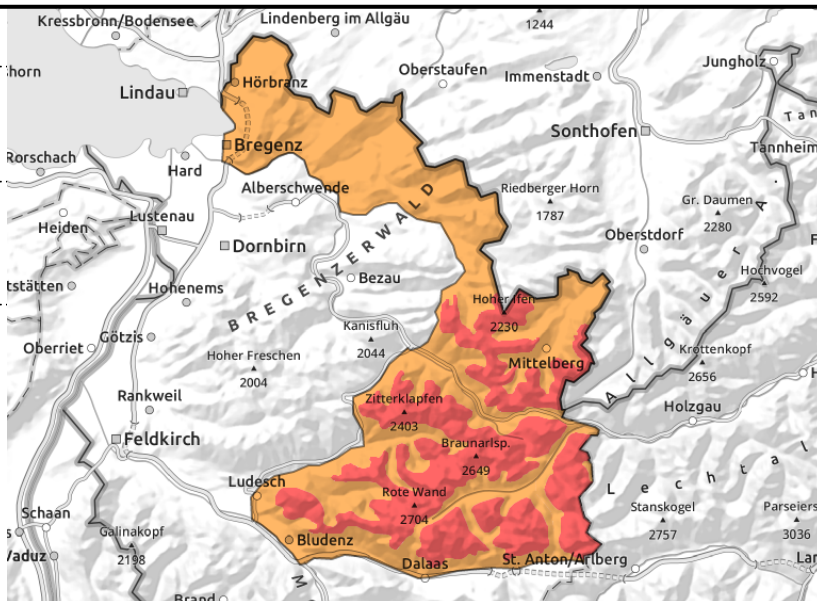
forestline



widespread in ridgeline areas, gullies, bowls



unfavourable, faceted intermediate layers



**Fresh drifts, often weak layering. Increasingly frequent glide-snow avalanches**

Fresh snow and drifts are increasingly prone to triggering with ascending altitude, can release even with minimum additional loading. Avalanche prone locations are found particularly above the timberline, in steep ridgeline terrain and in wind-loaded gullies and bowls. As winds intensify, fresh snowdrift accumulations are formed and danger zones become more frequent and larger-sized. Activities beyond secured ski slopes require experience in avalanche assessment on-site. In addition, at high altitude shady steep terrain, weak ground level layers can trigger in transition zones from deep to shallow snow by large additional loading in particular. If avalanches fracture down to deeper layers of the snowpack they can grow to large size. Exposed zones can be placed at risk. At low and intermediate altitudes on steep grass-covered slopes, in forest clearances and on hillsides, increasingly frequent naturally triggered glide-snow avalanches are possible.

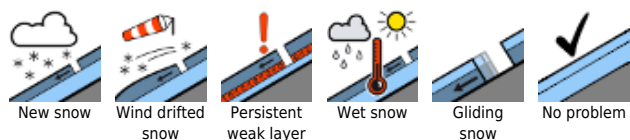
**Snowpack structure**

There was another 10-15 cm of fresh snow registered widespread, in the northern and Arlberg regions up to 25 cm. Amid intermittently storm-strength winds the snow was transported, and danger zones increased particularly above the treeline. Fresh snow and drifts of recent days were deposited on top of a loosely-packed, in some spots bonded and consolidated and rain-encrusted, settled snowpack up to about 1800 m, which furthers gliding movement of the snowpack over smooth ground. Bonding inside the upper layers, often riddled with graupel, and to the old snowpack is moderate to poor, making it prone to triggering. At mid-level of the snowpack on high-altitude shady slopes, faceted crystals are evident. There is currently only limited data available from high altitude zones.

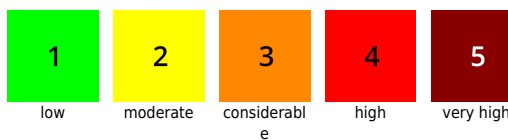
**Weather**

Wintery conditions, poor visibility, low temperatures, more snow showers, particularly in the Bregenzerwald and Arlberg regions a few additional centimetres of new snow is expected. Temperature at 2000 m: -9 degrees. High-altitude winds brisk to strong from the west, shifting to northerly.

**Avalanche problems**



**Danger ratings**



**Expositions**



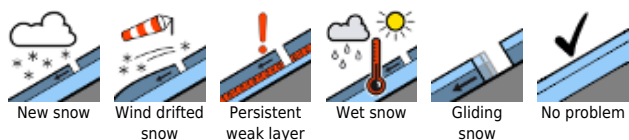
# 11.12.2021

## Outlook

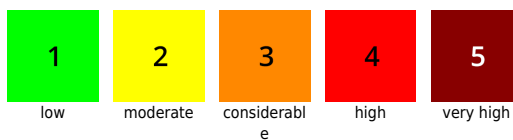
Snow showers will come to an end tonight. Sunday will begin quite sunny, During the day, cloud cover wil increase and it will be very windy. The avalanche situation will continue to be tense.

Translated by Jeffrey McCabe, [www.creativtrans.com](http://www.creativtrans.com)

### Avalanche problems



### Danger ratings



### Expositions

