

High avalanche danger regionally. Lots of snow at high altitude.



1200 m

Bregenzerwaldgebirge, Allgäuer Alpen, Lechquellengebirge, Lechtaler Alpen, Verwall

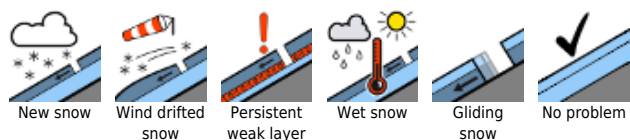


2000 m

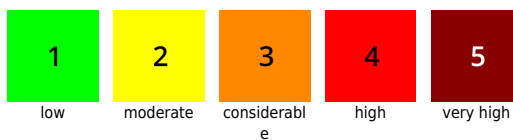
Rätikon West, Rätikon Ost, Silvretta



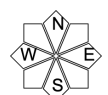
Avalanche problems



Danger ratings



Expositions

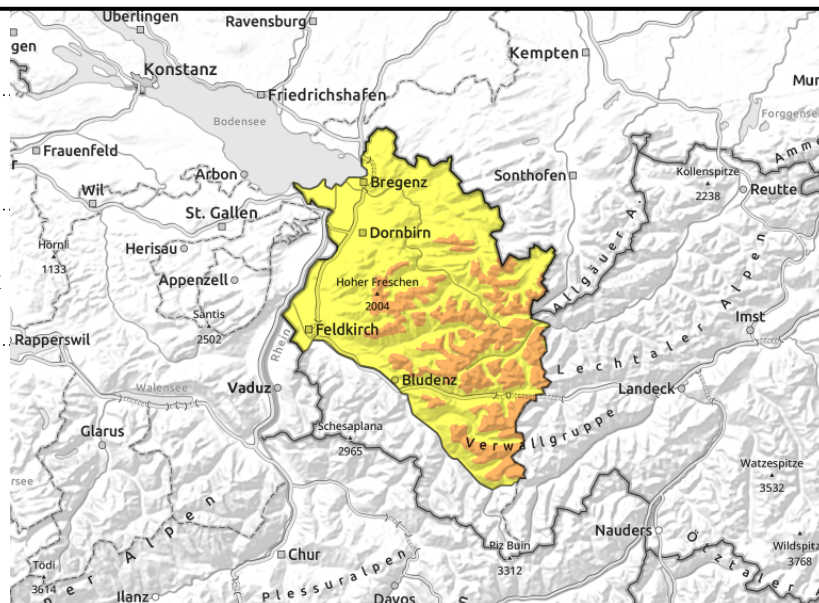


Bregenzerwaldgebirge, Allgäuer Alpen, Lechquellengebirge, Lechtaler Alpen, Verwall



critical mass of fresh snow, poorly bonded to old snowpack surface

trigger-sensitive, weak intermediate layers



Considerable avalanche danger widespread, lots of fresh snow

The great amounts of fresh snow can be triggered naturally as a loose-snow or slab avalanche in all aspects on steep slopes or can be triggered by minimum additional loading. Older snowdrift accumulations are covered by fresh snow, making them invisible to the naked eye. Avalanche prone locations are found particularly above the timberline near ridgelines on steep N/E/SE slopes and in wind-loaded gullies and bowls. In addition, on high-altitude shady steep slopes there are ground-level weak layers which can be triggered by large additional loading in transition zones from deep to shallow snow. At low and intermediate altitudes, glide-snow avalanches are triggering naturally on steep grass-covered slopes and in forest clearances. When avalanches fracture down to more deeply embedded layers of the snowpack they can grow to large size in isolated cases. Exposed areas can also be placed at risk.

Snowpack structure

By early morning there was 15-30 cm of fresh snow registered widespread, as much as 40 cm from place to place, which fell with only little wind influence. Bonding to the frequently loosely-packed old snowpack surface which is riddled with graupel is only moderate to poor, making it prone to triggering. At mid-level inside the snowpack on high-altitude shady slopes there are layers of faceted crystals.

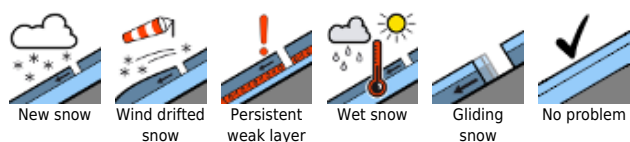
Weather

The heavy snowfall during the night is gradually slackening off, but visibility will remain reduced. During the daytime an additional 10 cm of fresh snow is anticipated. Temperature at 2000 m: -9 degrees. High altitude winds: moderate from west to northwest.

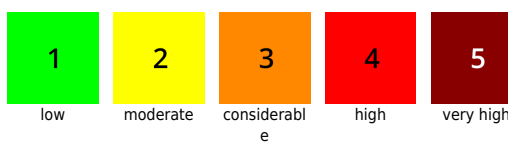
Outlook

Friday will bring more precipitation starting in the afternoon. It will remain cold. Due to further fresh snow and snowdrift accumulations the avalanche situation will remain tense. *Andreas Pecl*

Avalanche problems



Danger ratings



Expositions



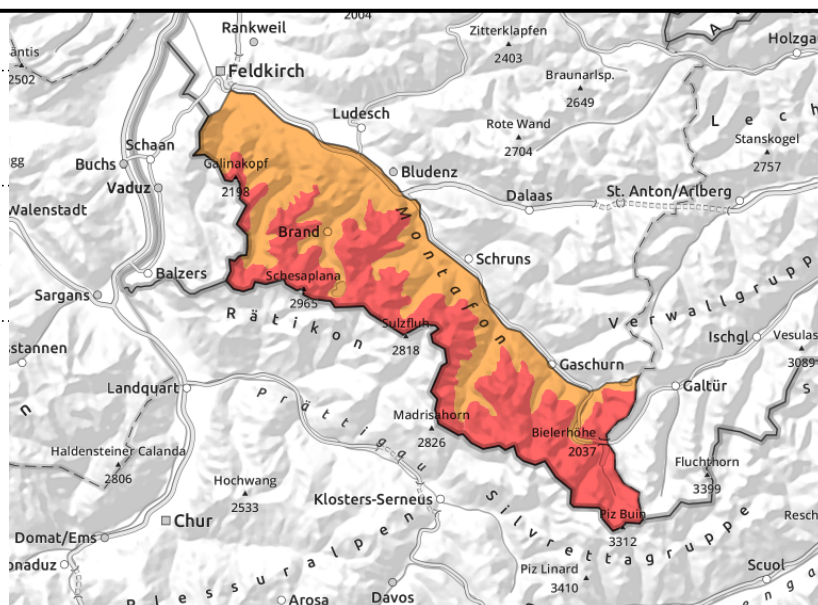
Rätikon West, Rätikon Ost, Silvretta



critical mass of fresh snow, poorly bonded to old snowpack surface



trigger-sensitive, weak intermediate layers; steep shady slopes



High avalanche danger at elevated altitudes, lots of fresh snow and snow transport

The great amounts of fresh snow can be triggered naturally as a loose-snow or slab avalanche in all aspects on steep slopes or can be triggered by minimum additional loading. Particularly at high altitude on steep shady slopes the snowpack can fracture down to deeper layers. These danger zones are invisible to the naked eye. Whump noises and cracks in the snowpack are signals of alarm. Activities outside the secured public ski areas demand much experience in on-site avalanche assessment, as well as knowledge of the terrain. In isolated cases, naturally triggered avalanches can grow to large size. At low and intermediate altitudes, glide-snow avalanches are triggering naturally on steep grass-covered slopes and in forest clearances. Exposed areas can also be placed at risk.

Snowpack structure

By early morning there was 25-40 cm of fresh snow registered widespread. With intermittently strong winds, small-to-medium sized snowdrift accumulations were repeatedly formed in ridgeline and pass areas, as well as behind protruberances in the landscape. Fresh snow and drifts were deposited on top of a consolidated, often rain-encrusted, settled snowpack surface up to nearly 1800 m. Bonding to the frequently loosely-packed old snowpack surface which is riddled with graupel is only moderate to poor, making it prone to triggering. At mid-level inside the snowpack on high-altitude shady slopes there are layers of faceted crystals.

Weather

During the course of the morning the precipitation will spread throughout Vorarlberg. Intermittent snowfall is expected, which will often be heavy and extend down to low lying areas. Temperature at 2000 m: receding from -3 to -7 degrees. High altitude winds: initially strong from south to southwest, slackening off later on.

Outlook

Friday will bring more precipitation starting in the afternoon. It will remain cold. Due to further fresh snow and snowdrift accumulations the avalanche situation will remain tense. Andreas Pecl

Translated by Jeffrey McCabe, www.creativtrans.com

Avalanche problems



Danger ratings



Expositions

