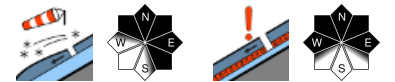


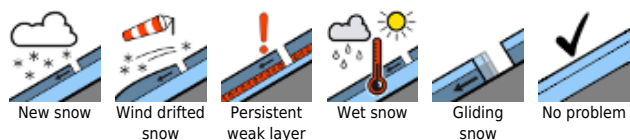
**Main danger: snowdrifts & weak old snowpack. Rainfall weakens it further.**



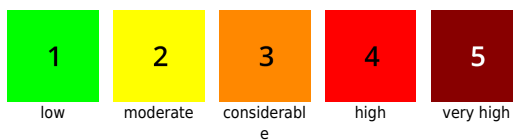
Allgäuer Alpen, Bregenzerwaldgebirge, Lechtallengebirge, Lechtaler Alpen, Rätikon West, Rätikon Ost, Silvretta, Verwall



**Avalanche problems**



**Danger ratings**



**Expositions**



**Allgäuer Alpen, Bregenzerwaldgebirge, Lechquellengebirge, Lechtaler Alpen, Rätikon West, Rätikon Ost, Silvretta, Verwall**



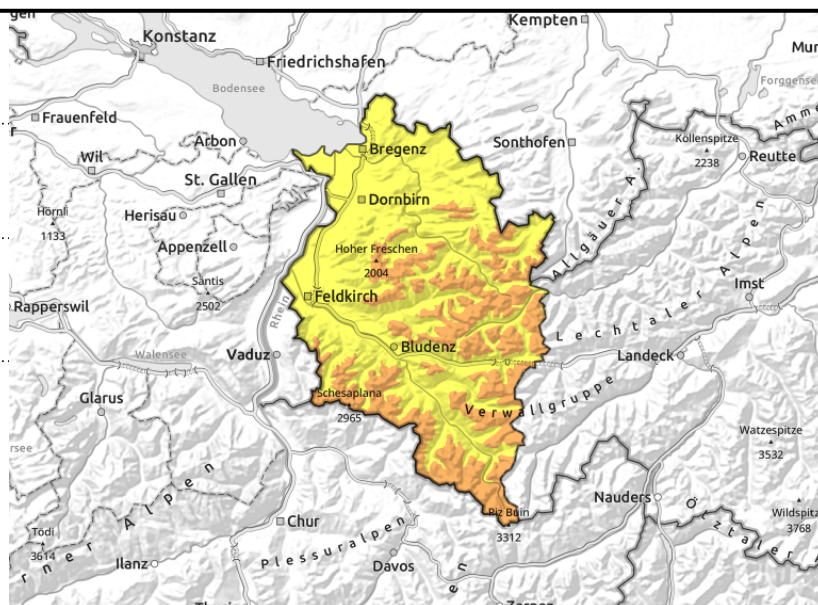
forestline



above timberline



very steep shady slopes where snow was already on the ground



**Freshly generated snowdrifts AND weak old snow are prone to triggering. With rising temperatures and rainfall, glide-snow avalanches will become more frequent.**

Avalanche danger is considerable widespread above the timberline. In wind-impacted steep terrain, the fresh drifts can easily be triggered. Particularly on high-altitude, steep, shady slopes the snowpack can fracture down to more deeply embedded layers. Whumpf noises and glide cracks are red flags of alarm. A single winter sports enthusiast can trigger small-to-medium sized avalanches, even remote triggerings are possible. Activities in outlying terrain beyond the secured public ski slopes demand experience in evaluating avalanche dangers on-site, as well as knowledge of the terrain. In zones where there is rainfall, the snowpack forfeits its stability. On steep grass-covered slopes more than anywhere else, small-to-medium sized glide-snow avalanches are possible; on steep rocky slopes, wet loose-snow avalanches.

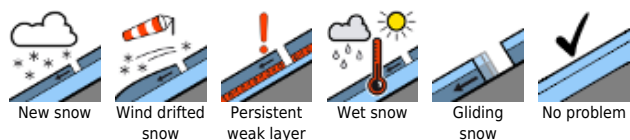
**Snowpack structure**

There was rainfall last night, above 1200 m up to 10 cm of fresh snow was registered. This fresh snow, together with the accumulated snow of the last few days, was transported increasingly with ascending altitude by intermittently strong-to-stormy SW/W/NW winds. Thus, snowdrifts accumulated in ridgeline and pass areas which now blanket older drifts that are trigger-sensitive themselves. Bonding of the uppermost layers of snow to the old snowpack beneath is moderate to poor. Naturally and artificially triggered releases, remote triggerings and avalanches loosed by skiers corroborate the assessment: prone to triggering. On sunny slopes the fresh snow and drifts were deposited on top of a melt-freeze crust in places, or else on bare ground. Further, more detailed snowpack analysis is not yet available.

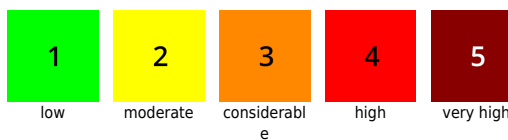
**Weather**

Skies will be gloomy today, visibility poor, snowfall is expected at high altitudes which will bring 15-30 cm of fresh snow, more in the barrier cloud regions. Rainfall is anticipated up to about 1500 m. Temperatures will rise measurably as a warm front passes through. At 2000 m: -4 to -1 degree. High altitude westerly winds will be blowing at strong to storm strength.

**Avalanche problems**



**Danger ratings**



**Expositions**



# 04.12.2021

## Outlook

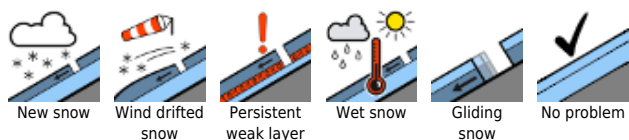
Tonight will bring rainfall and snowfall, the snowfall level descending down to low lying areas. Also on Sunday, it will be cold and wintery. Depending on the amounts of fresh snow and wind, avalanche danger levels could increase regionally. Particularly above the timberline and on high-altitude, steep, shady slopes the snowpack will remain prone to triggering.

Andreas Pecl

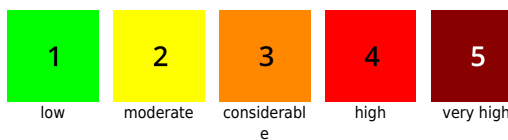
Translated by Jeffrey McCabe

Translated by Jeffrey McCabe, [www.creativtrans.com](http://www.creativtrans.com)

### Avalanche problems



### Danger ratings



### Expositions

