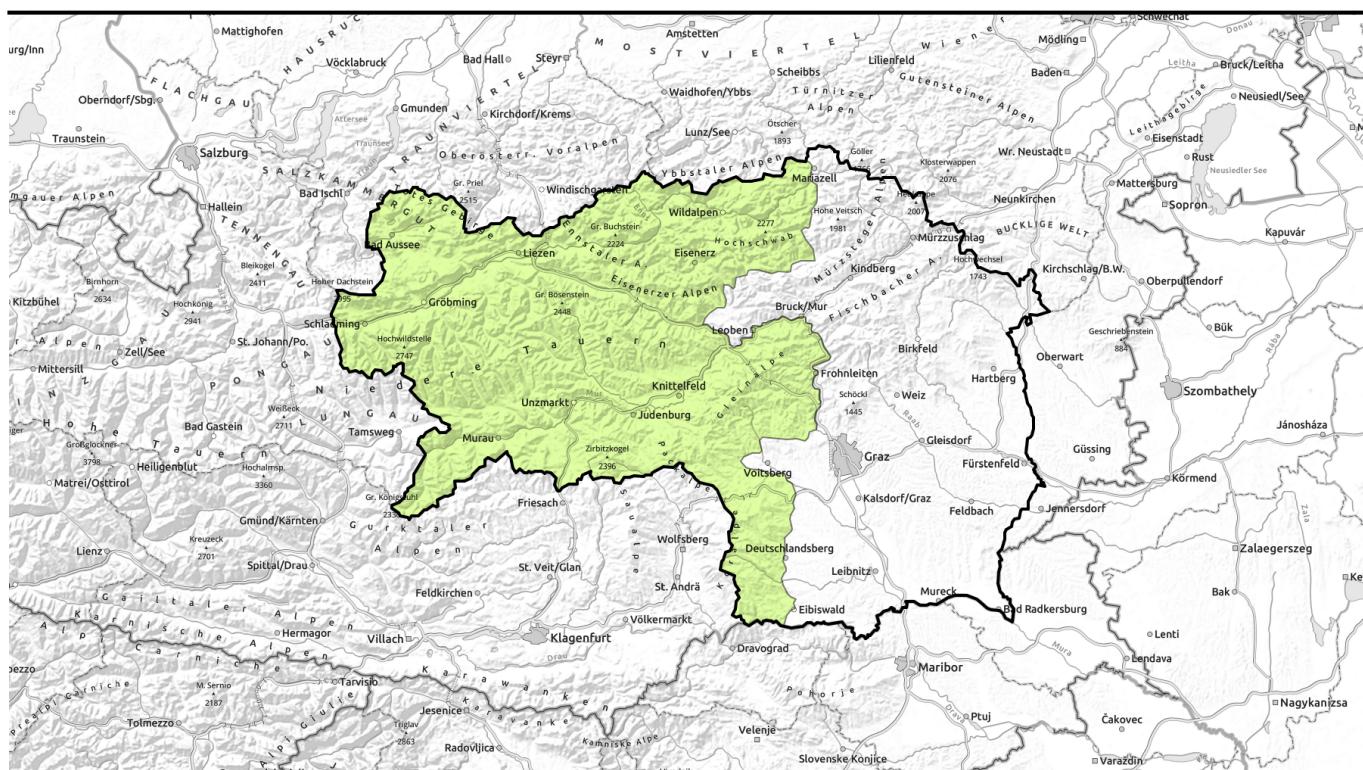


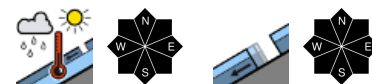
morning



Avalanche Bulletin for 1st May and outlook for coming days



Totes Gebirge, Dachsteingebiet, Schladminger Tauern Nord, Nördliche Wölzer Tauern, Rottenmanner Tauern, Ennstaler Alpen, Hochschwabgebiet, Eiseinerzer Alpen, Triebener Tauern, Schladminger Tauern Süd, Gurktaler Alpen, Südliche Wölzer Tauern, Seetaler Alpen, Gaaler Alpen, Stub- und Glainalpe, Koralpe



Avalanche problems



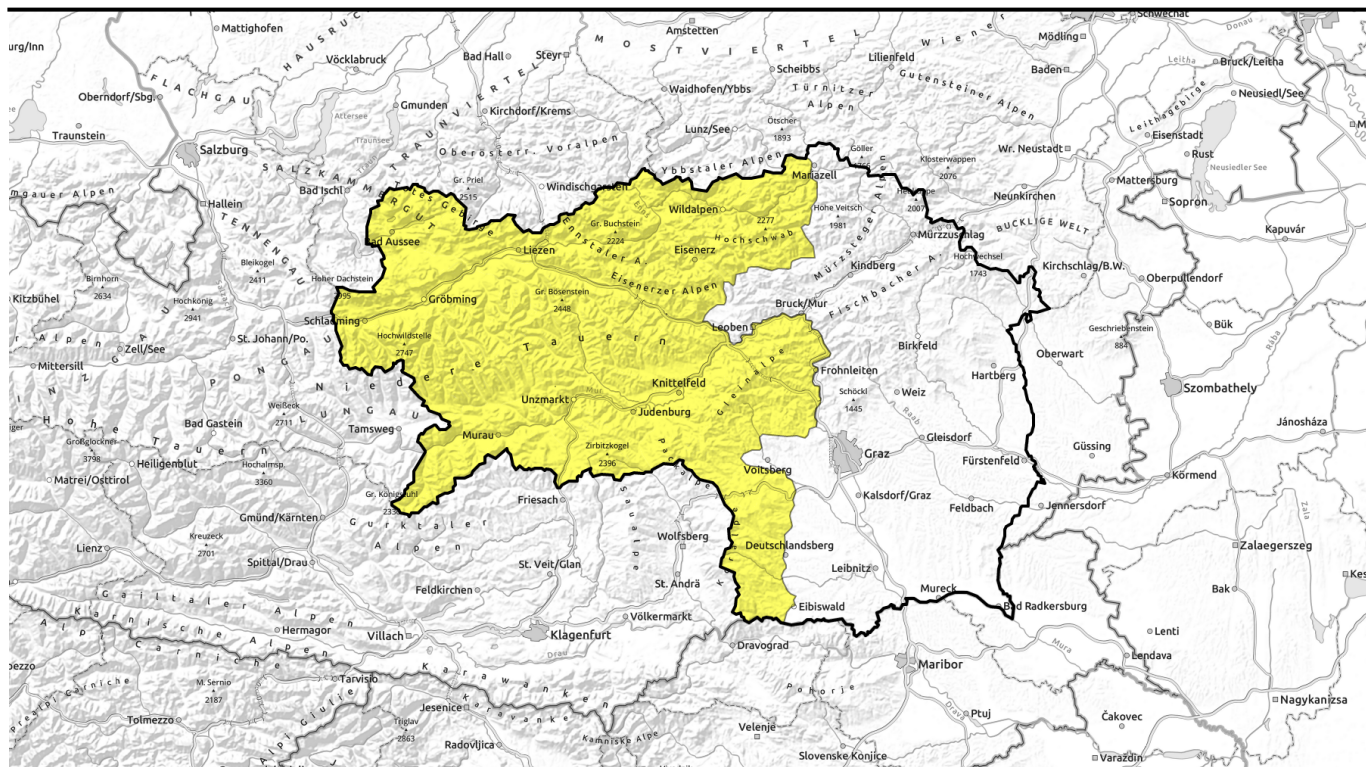
Danger ratings



Expositions



afternoon



Lawinenbericht für den 1. Mai und Ausblick für die kommenden Tage



Totes Gebirge, Dachsteingebiet, Schladminger Tauern Nord, Nördliche Wölzer Tauern, Rottenmanner Tauern, Ennstaler Alpen, Hochschwabgebiet, Eisenerzer Alpen, Triebener Tauern, Schladminger Tauern Süd, Gurktaler Alpen, Südliche Wölzer Tauern, Seetaler Alpen, Gaaler Alpen, Stub- und Glainalpe, Koralpe



Avalanche problems



Danger ratings

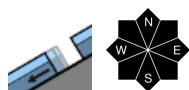
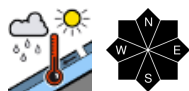


Expositions



morning

Totes Gebirge, Dachsteingebiet, Schladminger Tauern Nord, Nördliche Wölzer Tauern, Rottenmanner Tauern, Ennstaler Alpen, Hochschwabgebiet, Eisenerzer Alpen, Triebener Tauern, Schladminger Tauern Süd, Gurktaler Alpen, Südliche Wölzer Tauern, Seetaler Alpen, Gaaler Alpen, Stub- und Gleinalpe, Koralpe



Warmth and rainfall leading to moderate danger of naturally triggered wet-snow avalanches

Avalanche danger on Wednesday will initially be low, then increase to moderate during the course of the day. On east and south-facing slopes, isolated wet loose-snow and slab avalanches can be expected during the morning. Later the danger will rise in all aspects to moderate, towards evening esp. increasing naturally triggered wet-snow/glide-snow avalanches in the southern regions due to rainfall.

Snowpack structure

The snowpack has settled and to start with is stable. Due to higher temperatures and lacking nocturnal outgoing longwave radiation, a melt-freeze crust can hardly form. As temperatures rise and solar radiation intensifies, the snow quickly becomes slushy and heavy, depending on aspect. In the southern ranges, rainfall will destabilize the snowpack in the evening. The slopes are becoming bare of snow.

Weather

On the first of May, widespread sunshine in morning, in afternoon clouds will move in from the southwest. From Turrach to Wechsel, rainfall is expected in evening, snowfall level at summit altitude. Winds will be strong to stormy from the southwest. At 2000 m: +5 degrees.

Outlook

On Thursday, rainy and mild, moderate danger of naturally triggered wet-snow/glide-snow avalanches will persist.

Friday will be cooler, dry in the morning. In afternoon a small amount of precipitation, snowfall level at 2100 m. Avalanche danger is low, but naturally triggered wet-snow/glide-snow avalanches will persist. This is the final official Avalanche Bulletin of winter season 2023/24. In case of relevant events or developments, the column "Aktuelles" will provide information. The entire team at the Avalanche

Avalanche problems



Danger ratings

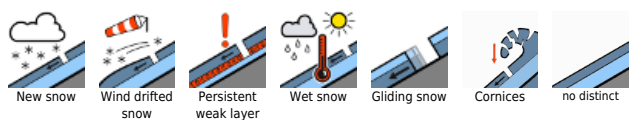


Expositions



Warning Service of Styria wishes everyone a wonderful summer.

Avalanche problems



Danger ratings

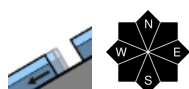
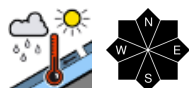


Expositions



afternoon

Totes Gebirge, Dachsteingebiet, Schladminger Tauern Nord, Nördliche Wölzer Tauern, Rottenmanner Tauern, Ennstaler Alpen, Hochschwabgebiet, Eisenerzer Alpen, Triebener Tauern, Schladminger Tauern Süd, Gurktaler Alpen, Südliche Wölzer Tauern, Seetaler Alpen, Gaaler Alpen, Stub- und Gleinalpe, Koralpe



Warmth and rainfall leading to moderate danger of naturally triggered wet-snow avalanches

Avalanche danger on Wednesday will initially be low, then increase to moderate during the course of the day. On east and south-facing slopes, isolated wet loose-snow and slab avalanches can be expected during the morning. Later the danger will rise in all aspects to moderate, towards evening esp. increasing naturally triggered wet-snow/glide-snow avalanches in the southern regions due to rainfall.

Snowpack structure

The snowpack has settled and to start with is stable. Due to higher temperatures and lacking nocturnal outgoing longwave radiation, a melt-freeze crust can hardly form. As temperatures rise and solar radiation intensifies, the snow quickly becomes slushy and heavy, depending on aspect. In the southern ranges, rainfall will destabilize the snowpack in the evening. The slopes are becoming bare of snow.

Weather

On the first of May, widespread sunshine in morning, in afternoon clouds will move in from the southwest. From Turrach to Wechsel, rainfall is expected in evening, snowfall level at summit altitude. Winds will be strong to stormy from the southwest. At 2000 m: +5 degrees.

Outlook

On Thursday, rainy and mild, moderate danger of naturally triggered wet-snow/glide-snow avalanches will persist.

Friday will be cooler, dry in the morning. In afternoon a small amount of precipitation, snowfall level at 2100 m. Avalanche danger is low, but naturally triggered wet-snow/glide-snow avalanches will persist. This is the final official Avalanche Bulletin of winter season 2023/24. In case of relevant events or developments, the column "Aktuelles" will provide information. The entire team at the Avalanche

Avalanche problems



Danger ratings



Expositions



Warning Service of Styria wishes everyone a wonderful summer.

Translated by Jeffrey McCabe, www.creativtrans.com

Avalanche problems



Danger ratings



Expositions

