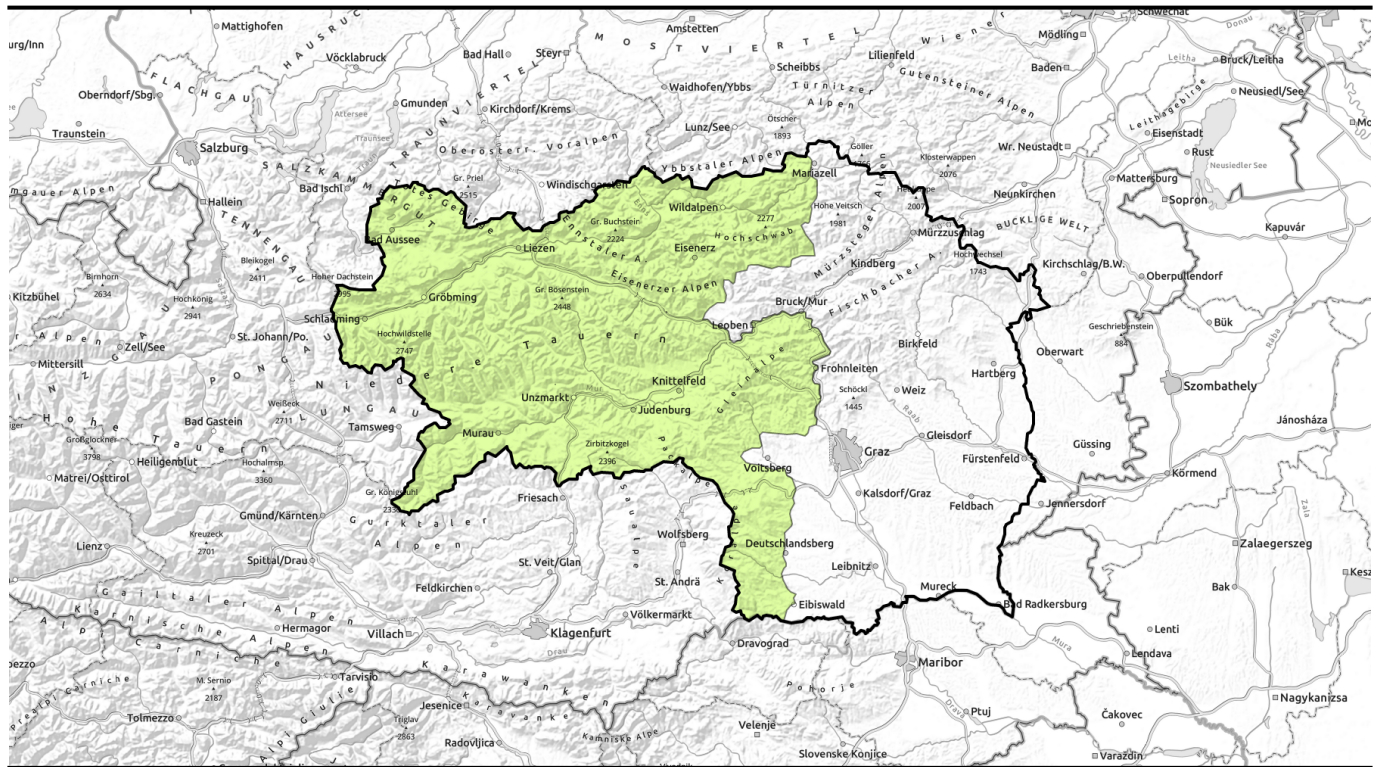


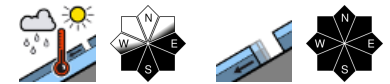
morning



Daytime cycle of avalanche danger



Totes Gebirge, Dachsteingebiet, Schladminger Tauern Nord, Nördliche Wölzer Tauern, Rottenmanner Tauern, Ennstaler Alpen, Hochschwabgebiet, Eisehrzer Alpen, Triebener Tauern, Schladminger Tauern Süd, Gurktaler Alpen, Südliche Wölzer Tauern, Seetaler Alpen, Gaaler Alpen, Stub- und Glainalpe, Koralpe



Avalanche problems



www.lawine-steiermark.at

Danger ratings

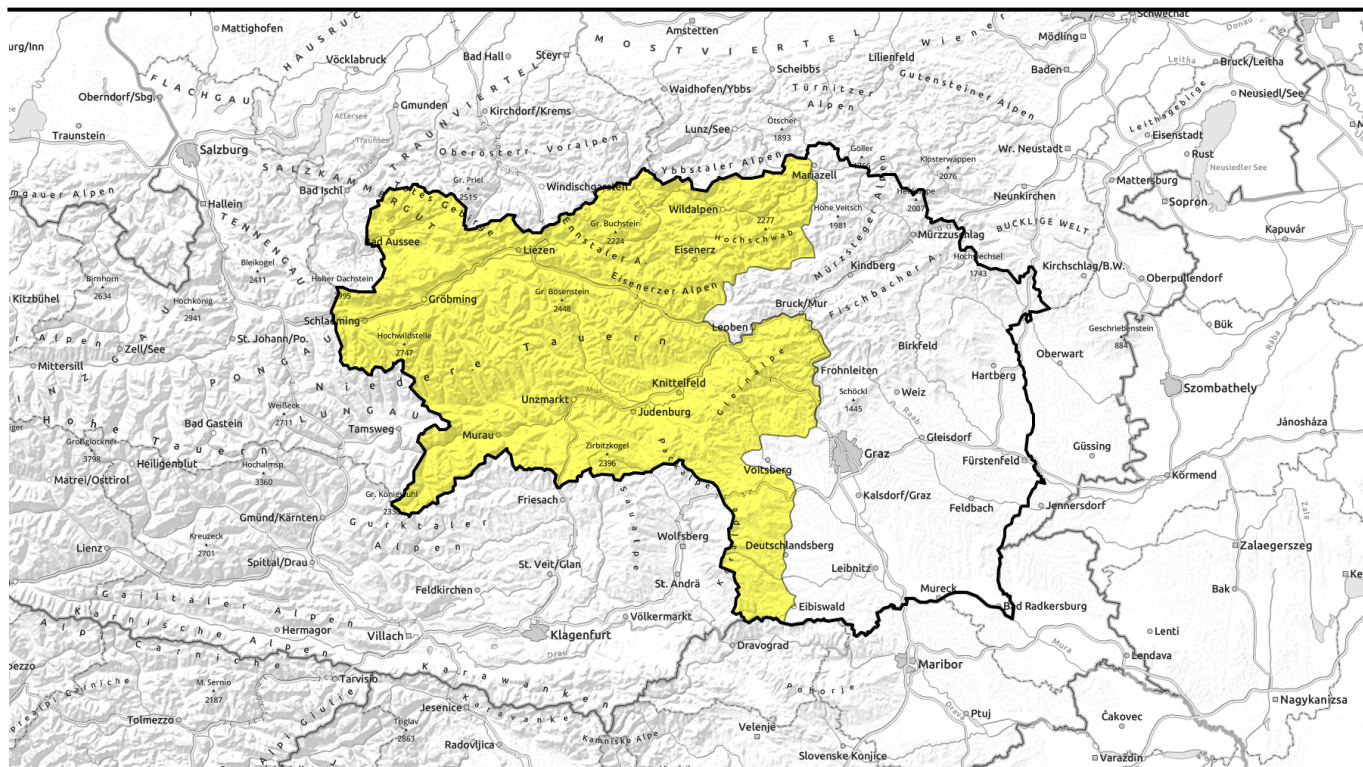


Expositions



Lawinenhandy: 0664/8105928

afternoon



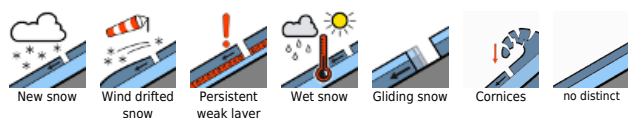
Tagesgang der Lawinengefahr!



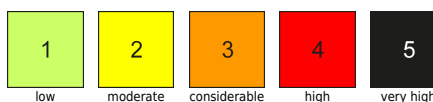
Totes Gebirge, Dachsteingebiet, Schladminger Tauern Nord, Nördliche Wölzer Tauern, Rottenmanner Tauern, Ennstaler Alpen, Hochschwabgebiet, Eisenerzer Alpen, Triebener Tauern, Schladminger Tauern Süd, Gurktaler Alpen, Südliche Wölzer Tauern, Seetaler Alpen, Gaaler Alpen, Stub- und Glainalpe, Korralpe



Avalanche problems



Danger ratings

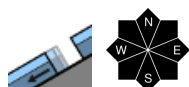
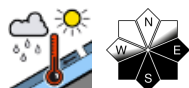


Expositions



morning

Totes Gebirge, Dachsteingebiet, Schladminger Tauern Nord, Nördliche Wölzer Tauern, Rottenmanner Tauern, Ennstaler Alpen, Hochschwabgebiet, Eisenerzer Alpen, Triebener Tauern, Schladminger Tauern Süd, Gurktaler Alpen, Südliche Wölzer Tauern, Seetaler Alpen, Gaaler Alpen, Stub- und Gleinalpe, Koralpe



Terminate backcountry tours early!

Avalanche danger is subject to a daytime danger cycle. In morning, low danger prevails (although on east and south-facing slopes isolated wet loose-snow and slab avalanches can trigger already in the morning hours), then increases swiftly with rising temperatures to moderate. The danger of moist loose-snow and slab avalanches increases during the course of the day. In extremely steep terrain naturally triggered releases are expected.

Snowpack structure

The snowpack has settled and is stable at the start of the day. Due to high temperatures and lacking nocturnal outgoing longwave radiation, a melt-freeze crust can hardly form. As temperatures rise and solar radiation intensifies, the snow quickly becomes slushy and heavy, depending on aspect. No marked weak layers are evident. The slopes are becoming bare of snow.

Weather

On Tuesday, sunny and windy weather (southerly current) will continue, only partly hampered by cirrus clouds and Sahara dust, later a bit of convective cloud build-up. Winds will be strong from the southwest. At 2000 m: +10 degrees.

Outlook

On Wednesday morning, widespread sunshine, in afternoon, clouds will move in from the southwest, some precipitation is expected. Avalanche danger levels are not expected to change significantly.

Avalanche problems



Danger ratings

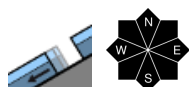
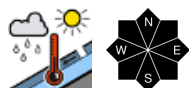


Expositions



afternoon

Totes Gebirge, Dachsteingebiet, Schladminger Tauern Nord, Nördliche Wölzer Tauern, Rottenmanner Tauern, Ennstaler Alpen, Hochschwabgebiet, Eisenerzer Alpen, Triebener Tauern, Schladminger Tauern Süd, Gurktaler Alpen, Südliche Wölzer Tauern, Seetaler Alpen, Gaaler Alpen, Stub- und Gleinalpe, Koralpe



Terminate backcountry tours early!

Avalanche danger is subject to a daytime danger cycle. In morning, low danger prevails (although on east and south-facing slopes isolated wet loose-snow and slab avalanches can trigger already in the morning hours), then increases swiftly with rising temperatures to moderate. The danger of moist loose-snow and slab avalanches increases during the course of the day. In extremely steep terrain naturally triggered releases are expected.

Snowpack structure

The snowpack has settled and is stable at the start of the day. Due to high temperatures and lacking nocturnal outgoing longwave radiation, a melt-freeze crust can hardly form. As temperatures rise and solar radiation intensifies, the snow quickly becomes slushy and heavy, depending on aspect. No marked weak layers are evident. The slopes are becoming bare of snow.

Weather

On Tuesday, sunny and windy weather (southerly current) will continue, only partly hampered by cirrus clouds and Sahara dust, later a bit of convective cloud build-up. Winds will be strong from the southwest. At 2000 m: +10 degrees.

Outlook

On Wednesday morning, widespread sunshine, in afternoon, clouds will move in from the southwest, some precipitation is expected. Avalanche danger levels are not expected to change significantly.

Translated by Jeffrey McCabe, www.creativtrans.com

Avalanche problems



Danger ratings



Expositions

