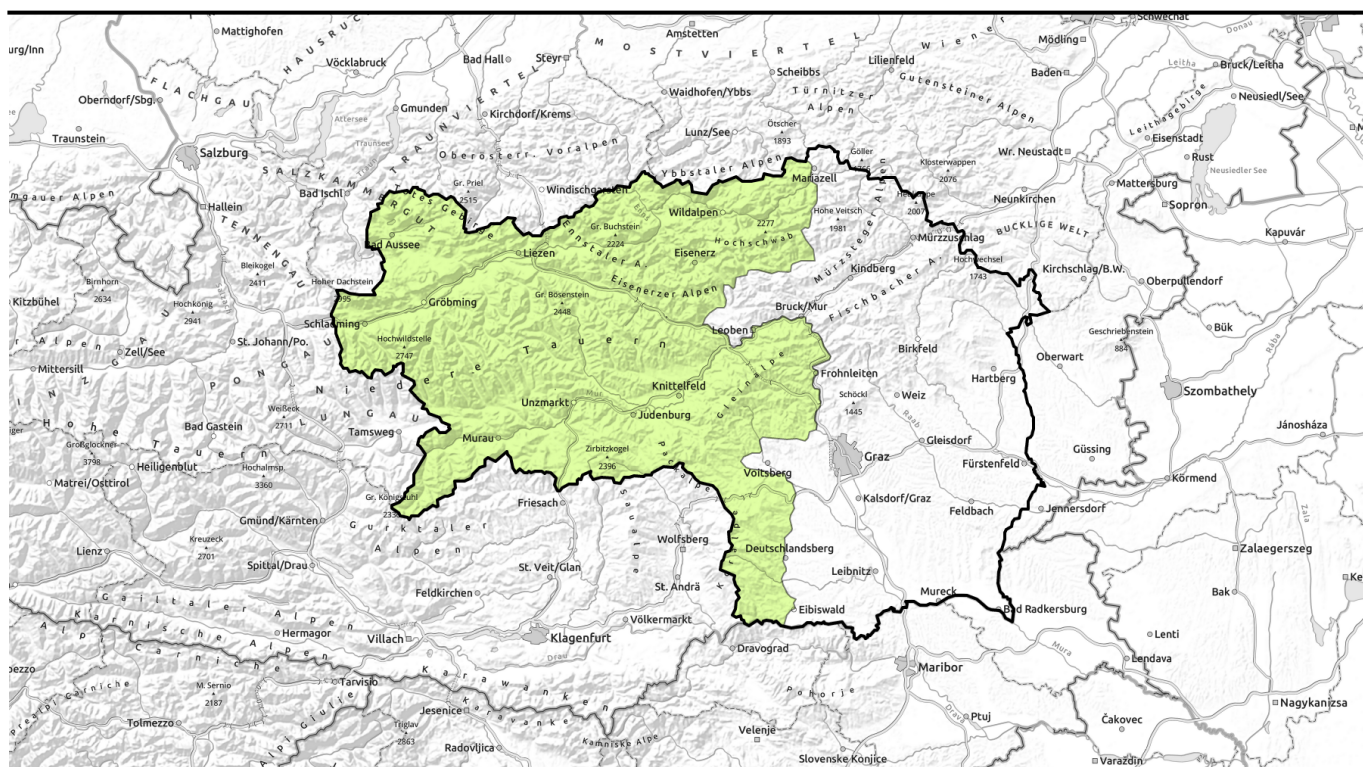


morning



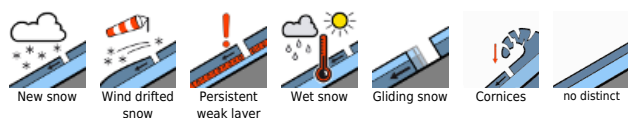
Daytime cycle of avalanche danger



Totes Gebirge, Dachsteingebiet, Schladminger Tauern Nord, Nördliche Wölzer Tauern, Rottenmanner Tauern, Ennstaler Alpen, Hochschwabgebiet, Eisenerzer Alpen, Triebener Tauern, Schladminger Tauern Süd, Gurktaler Alpen, Südliche Wölzer Tauern, Seetaler Alpen, Gaaler Alpen, Stub- und Glainalpe, Koralpe



Avalanche problems



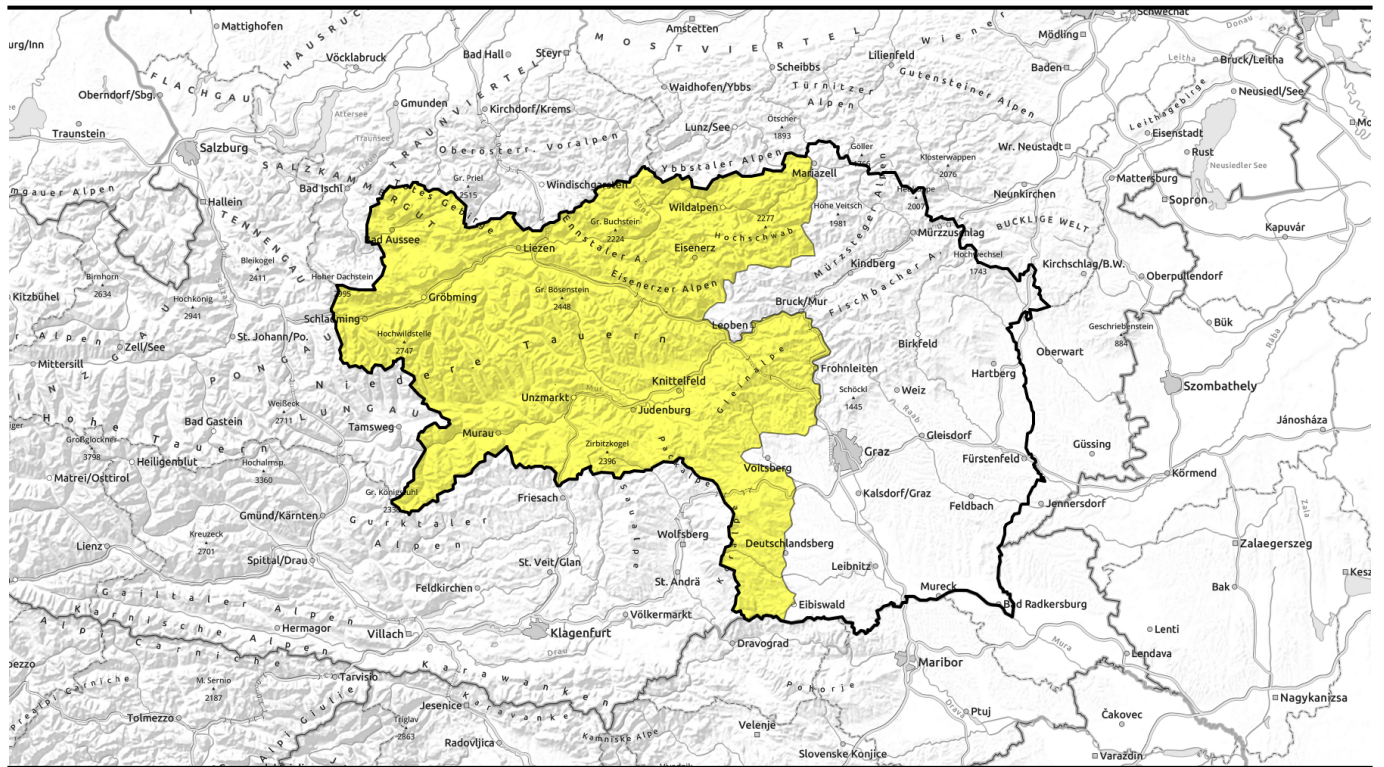
Danger ratings



Expositions



afternoon



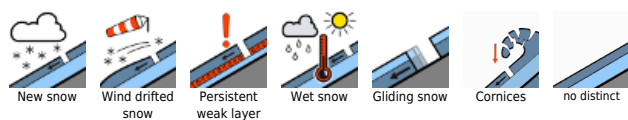
Tagesgang der Lawinengefahr!



Totes Gebirge, Dachsteingebiet, Schladminger Tauern Nord, Nördliche Wölzer Tauern, Rottenmanner Tauern, Ennstaler Alpen, Hochschwabgebiet, Eisenerzer Alpen, Triebener Tauern, Schladminger Tauern Süd, Gurktaler Alpen, Südliche Wölzer Tauern, Seetaler Alpen, Gaaler Alpen, Stub- und Glainalpe, Korralpe



Avalanche problems



Danger ratings

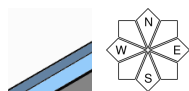


Expositions



morning

Totes Gebirge, Dachsteingebiet, Schladminger Tauern Nord, Nördliche Wölzer Tauern, Rottenmanner Tauern, Ennstaler Alpen, Hochschwabgebiet, Eisenerzer Alpen, Triebener Tauern, Schladminger Tauern Süd, Gurktaler Alpen, Südliche Wölzer Tauern, Seetaler Alpen, Gaaler Alpen, Stub- und Gleinalpe, Koralpe



Terminate backcountry tours early!

Avalanche danger is subject to a daytime danger cycle. In morning, low danger prevails, then increases swiftly with rising temperatures to moderate. The danger of moist loose-snow and slab avalanches increases during the course of the day. In extremely steep terrain naturally triggered releases are expected.

Snowpack structure

During the nighttime hours the snowpack stabilizes again, it usually forms a melt-freeze crust on the surface. Starting in morning it is stable, but loses its firmness. The snow becomes moist-to-wet, slushy or heavy, depending on altitude. The slopes are becoming bare of snow.

Weather

On Monday the sunny weather will continue but for cirrus clouds and Sahara dust. Southerly winds will be brisk, in the foehn lanes of northern Upper Styrian regions also strong (gusts of 60 km/hr). At 2000 m: 8-11 degrees.

Outlook

On Tuesday it will remain mild and foehn-dominated, with sunshine but also with high-altitude clouds and Sahara dust. The daily avalanche danger cycle will continue.

Avalanche problems



Danger ratings

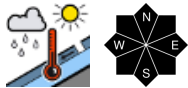
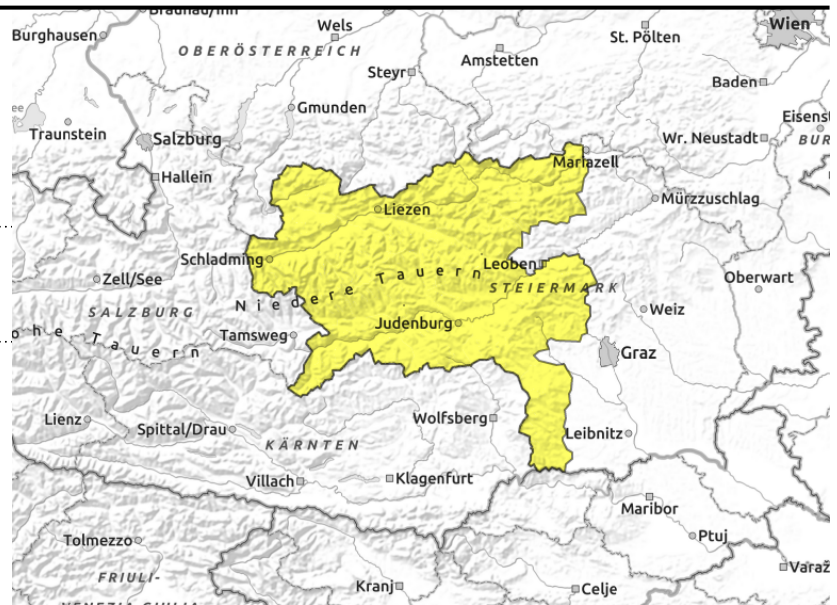


Expositions



afternoon

Totes Gebirge, Dachsteingebiet, Schladminger Tauern Nord, Nördliche Wölzer Tauern, Rottenmanner Tauern, Ennstaler Alpen, Hochschwabgebiet, Eisenerzer Alpen, Triebener Tauern, Schladminger Tauern Süd, Gurktaler Alpen, Südliche Wölzer Tauern, Seetaler Alpen, Gaaler Alpen, Stub- und Gleinalpe, Koralpe



Terminate backcountry tours early!

Avalanche danger is subject to a daytime danger cycle. In morning, low danger prevails, then increases swiftly with rising temperatures to moderate. The danger of moist loose-snow and slab avalanches increases during the course of the day. In extremely steep terrain naturally triggered releases are expected.

Snowpack structure

During the nighttime hours the snowpack stabilizes again, it usually forms a melt-freeze crust on the surface. Starting in morning it is stable, but loses its firmness. The snow becomes moist-to-wet, slushy or heavy, depending on altitude. The slopes are becoming bare of snow.

Weather

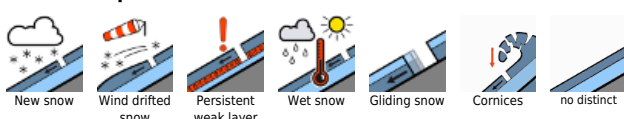
On Monday the sunny weather will continue but for cirrus clouds and Sahara dust. Southerly winds will be brisk, in the foehn lanes of northern Upper Styrian regions also strong (gusts of 60 km/hr). At 2000 m: 8-11 degrees.

Outlook

On Tuesday it will remain mild and foehn-dominated, with sunshine but also with high-altitude clouds and Sahara dust. The daily avalanche danger cycle will continue.

Translated by Jeffrey McCabe, www.creativtrans.com

Avalanche problems



Danger ratings



Expositions

