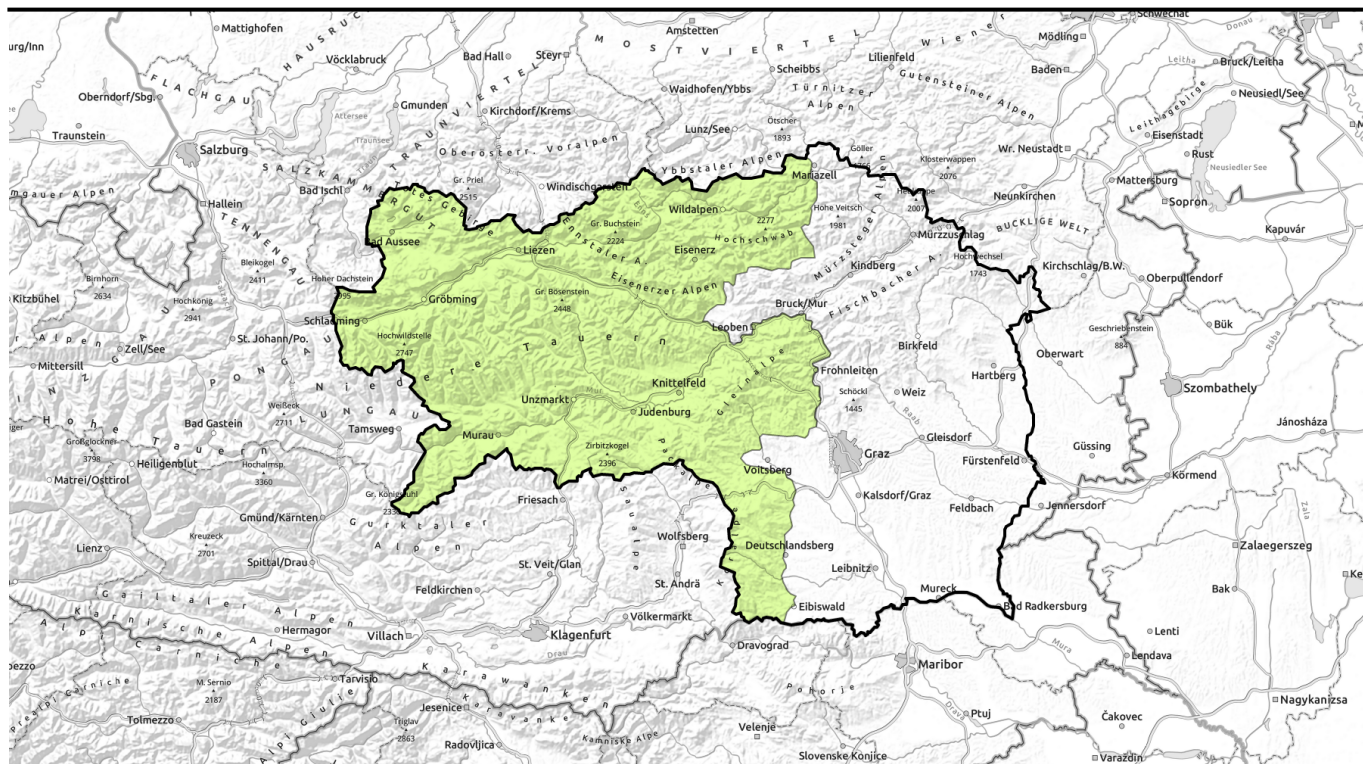


## morning



## Daytime cycle of avalanche danger



Totes Gebirge, Dachsteingebiet, Schladminger Tauern Nord, Nördliche Wölzer Tauern, Rottenmanner Tauern, Ennstaler Alpen, Hochschwabgebiet, Eisenerzer Alpen, Triebener Tauern, Schladminger Tauern Süd, Gurktaler Alpen, Südliche Wölzer Tauern, Seetaler Alpen, Gaaler Alpen, Stub- und Glainalpe, Koralpe



### Avalanche problems



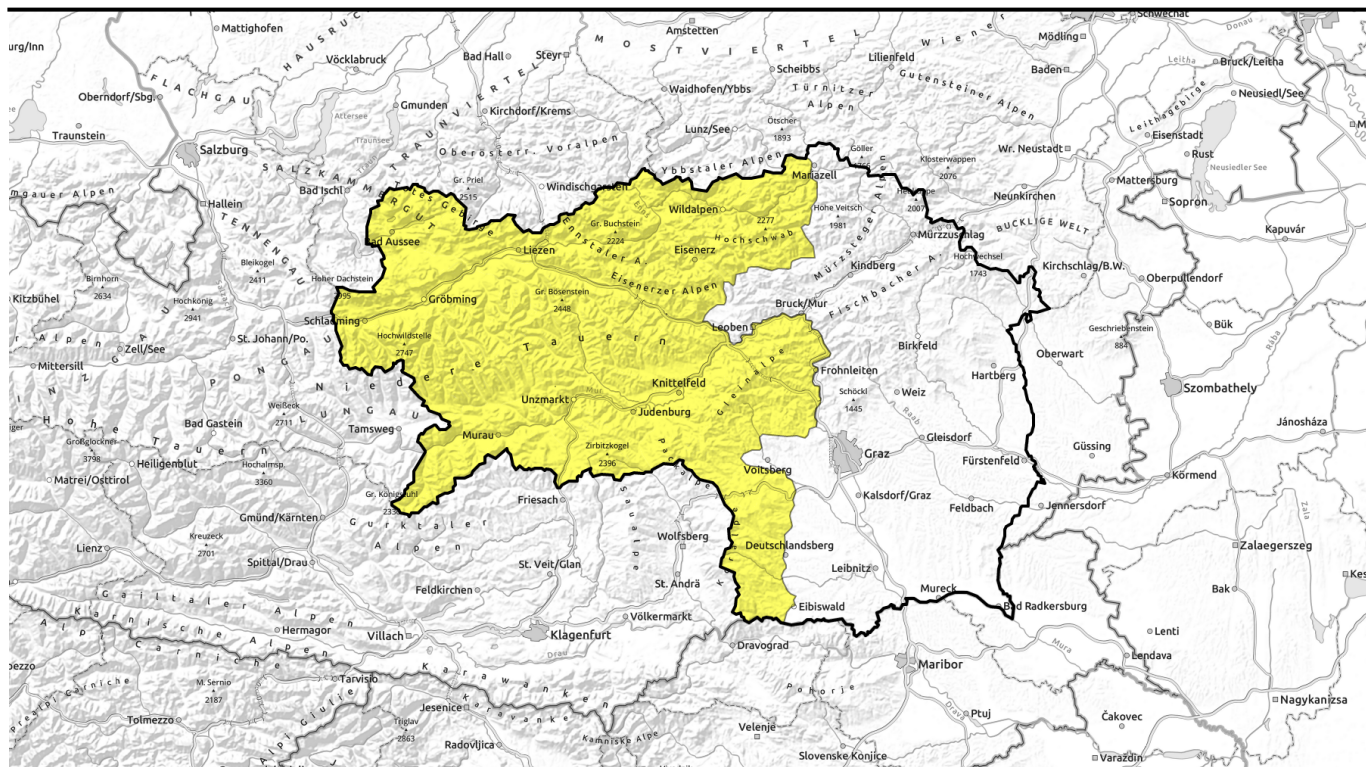
### Danger ratings



### Expositions



## afternoon



## Tagesgang der Lawinengefahr!



Totes Gebirge, Dachsteingebiet, Schladminger Tauern Nord, Nördliche Wölzer Tauern, Rottenmanner Tauern, Ennstaler Alpen, Hochschwabgebiet, Eisenerzer Alpen, Triebener Tauern, Schladminger Tauern Süd, Gurktaler Alpen, Südliche Wölzer Tauern, Seetaler Alpen, Gaaler Alpen, Stub- und Glainalpe, Korralpe



### Avalanche problems



### Danger ratings

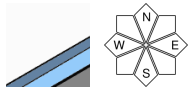


### Expositions



## morning

Totes Gebirge, Dachsteingebiet, Schladminger Tauern Nord, Nördliche Wölzer Tauern, Rottenmanner Tauern, Ennstaler Alpen, Hochschwabgebiet, Eisenerzer Alpen, Triebener Tauern, Schladminger Tauern Süd, Gurktaler Alpen, Südliche Wölzer Tauern, Seetaler Alpen, Gaaler Alpen, Stub- und Gleinalpe, Koralpe



## Terminate backcountry tours early!

Avalanche danger is subject to a daytime danger cycle. In morning, low danger prevails, then increases swiftly with rising temperatures to moderate. The danger of moist loose-snow and slab avalanches increases during the course of the day. In extremely steep terrain naturally triggered releases are expected. The danger of dry-snow slab avalanches has receded.

### Snowpack structure

During the nighttime hours the snowpack stabilizes again, it usually forms a melt-freeze crust on the surface. Starting in morning it loses its firmness. The snow becomes moist-to-wet, depending on altitude.

### Weather

Föhn-generated SW winds will be blowing on Sunday, esp. above summit level along the Niedere Tauern and from Seetal Alps to the rimline ranges, gusts quite strong (50-60 km/hr), accompanied by high-altitude clouds and sunshine. Visibility can be hampered by Sahara dust. Temperatures will rise further. At 2000 m: 7-10 degrees by afternoon.

### Outlook

On Monday, the sunny and mild weather will continue, but not without hindrance including cirrus clouds and dust from the Sahara. Winds will be strong from the southwest. Daytime cycle of avalanche danger needs attentiveness.

#### Avalanche problems



#### Danger ratings

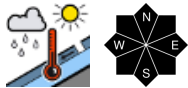
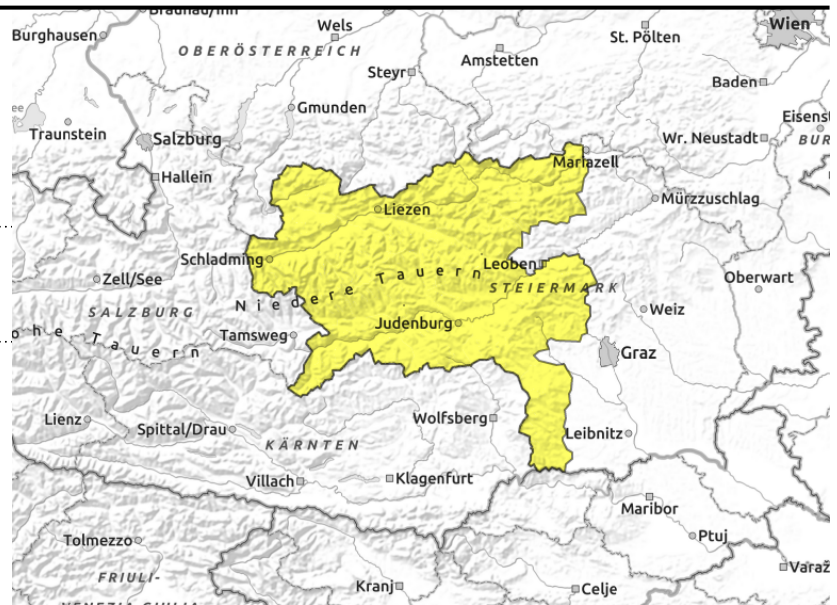


#### Expositions



## afternoon

Totes Gebirge, Dachsteingebiet, Schladminger Tauern Nord, Nördliche Wölzer Tauern, Rottenmanner Tauern, Ennstaler Alpen, Hochschwabgebiet, Eisenerzer Alpen, Triebener Tauern, Schladminger Tauern Süd, Gurktaler Alpen, Südliche Wölzer Tauern, Seetaler Alpen, Gaaler Alpen, Stub- und Gleinalpe, Koralpe



## Terminate backcountry tours early!

Avalanche danger is subject to a daytime danger cycle. In morning, low danger prevails, then increases swiftly with rising temperatures to moderate. The danger of moist loose-snow and slab avalanches increases during the course of the day. In extremely steep terrain naturally triggered releases are expected. The danger of dry-snow slab avalanches has receded.

### Snowpack structure

During the nighttime hours the snowpack stabilizes again, it usually forms a melt-freeze crust on the surface. Starting in morning it loses its firmness. The snow becomes moist-to-wet, depending on altitude.

### Weather

Föhn-generated SW winds will be blowing on Sunday, esp. above summit level along the Niedere Tauern and from Seetal Alps to the rimline ranges, gusts quite strong (50-60 km/hr), accompanied by high-altitude clouds and sunshine. Visibility can be hampered by Sahara dust. Temperatures will rise further. At 2000 m: 7-10 degrees by afternoon.

### Outlook

On Monday, the sunny and mild weather will continue, but not without hindrance including cirrus clouds and dust from the Sahara. Winds will be strong from the southwest. Daytime cycle of avalanche danger needs attentiveness.

Translated by Jeffrey McCabe, [www.creativtrans.com](http://www.creativtrans.com)

### Avalanche problems



### Danger ratings



### Expositions

