

Wet-snow problem. Rising temperatures.



2000 m
 Totes Gebirge, Dachsteingebiet, Schladminger Tauern Nord, Schladminger Tauern Süd, Südliche Wölzer Tauern, Nördliche Wölzer Tauern, Ennstaler Alpen, Gaaler Alpen, Triebener Tauern, Eisenerzer Alpen, Hochschwabgebiet, Rottenmanner Tauern, Gurktaler Alpen, Seetaler Alpen, Stub- und Gleinalpe, Koralpe



Mürztaler Alpen, Westliche Fischbacher Alpen und Grazer Bergland, Östliche Fischbacher Alpen und Wechselgebiet, Mürzsteger Alpen



Avalanche problems



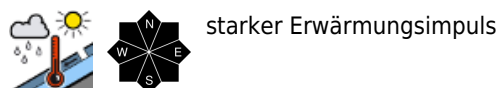
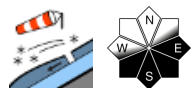
Danger ratings



Expositions



Totes Gebirge, Dachsteingebiet, Schladminger Tauern Nord, Schladminger Tauern Süd, Südliche Wölzer Tauern, Nördliche Wölzer Tauern, Ennstaler Alpen, Gaaler Alpen, Triebener Tauern, Eisenerzer Alpen, Hochschwabgebiet, Rottenmanner Tauern, Gurktaler Alpen, Seetaler Alpen, Stub- und Gleinalpe, Korralpe



Snowdrift problem above 2000 m. Likelihood of wet-snow avalanches triggering will rise due to higher temperatures.

Above 2000 m avalanche danger is moderate. The snowdrift problem prevails above 2000 m, the wet-snow problem will intensify as the day progresses. Danger zones for slab avalanches occur esp. in steep ridgeline terrain and laterally wind-loaded terrain (discontinuities, precipices in the terrain) above 2000m esp. on north-facing slopes, releases mostly by large additional loading, by 1 person in isolated cases.

Apart from that, moist loose-snow avalanche danger will rise during the daytime, natural triggerings possible in extremely steep terrain.

Snowpack structure

The fresh fallen snow from the last week can continue to settle. Due to higher temperatures the snowpack surface is moist-to-wet; it is dry only on shady high-alpine slopes.

Weather

Friday will be predominantly sunny, but clouds will move in during the daytime hours, only isolated rain showers. Intensifying SW winds. At 2000 m: 0 degrees.

Outlook

On Saturday, very sunny and mild. Avalanche danger will be subject to a daytime danger cycle.

Avalanche problems



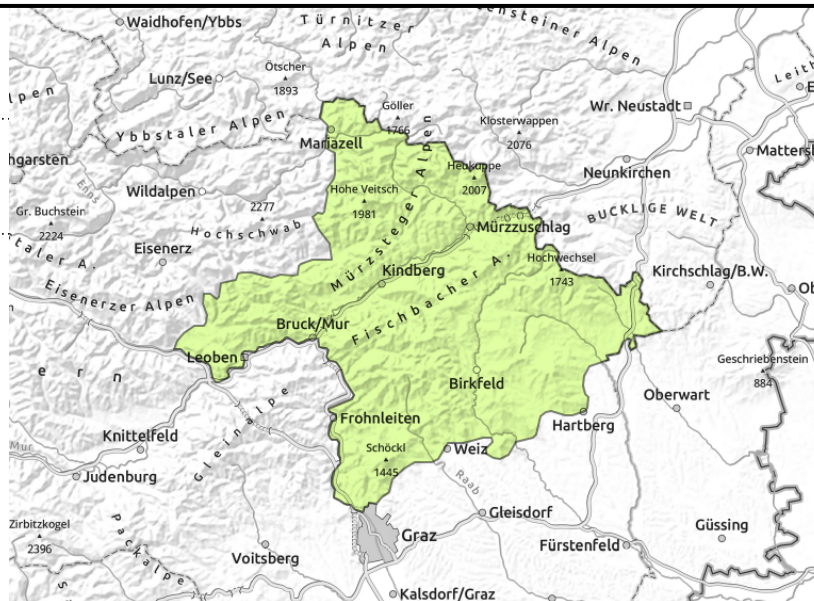
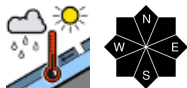
Danger ratings



Expositions



Mürztaler Alpen, Westliche Fischbacher Alpen und Grazer Bergland, Östliche Fischbacher Alpen und Wechselgebiet, Mürzsteger Alpen



Wet-snow slides possible

Avalanche danger is low. Main problem: wet snow. Naturally triggered wet-snow slides are possible on extremely steep slopes.

Snowpack structure

Along the Styrian rimline ranges and in the Wechsel region the snowpack is settling. Due to higher temperatures the snowpack surface is moist-to-wet. Near slopes which were bare of snow prior to the recent precipitation, bonding to the warm ground is poor, the snowpack tends to glide over smooth ground.

Weather

Friday will be predominantly sunny, but clouds will move in during the daytime hours, only isolated rain showers. Intensifying SW winds. At 2000 m: 0 degrees.

Outlook

On Saturday, very sunny and mild. Avalanche danger will be subject to a daytime danger cycle.

Translated by Jeffrey McCabe, www.creativtrans.com

Avalanche problems



Danger ratings



Expositions

