

Improving weather conditions. Beware snowdrift danger signals at high altitudes.



Koralpe, Gurktaler Alpen, Seetaler Alpen, Stub- und Gleinalpe, Westliche Fischbacher Alpen und Grazer Bergland, Östliche Fischbacher Alpen und Wechselgebiet



Totes Gebirge, Dachsteingebiet, Schladminger Tauern Nord, Schladminger Tauern Süd, Südliche Wölzer Tauern, Nördliche Wölzer Tauern, Ennstaler Alpen, Gaaler Alpen, Triebener Tauern, Eisenerzer Alpen, Hochschwabgebiet, Mürztsteger Alpen, Rottenmanner Tauern



Mürztaler Alpen



Avalanche problems



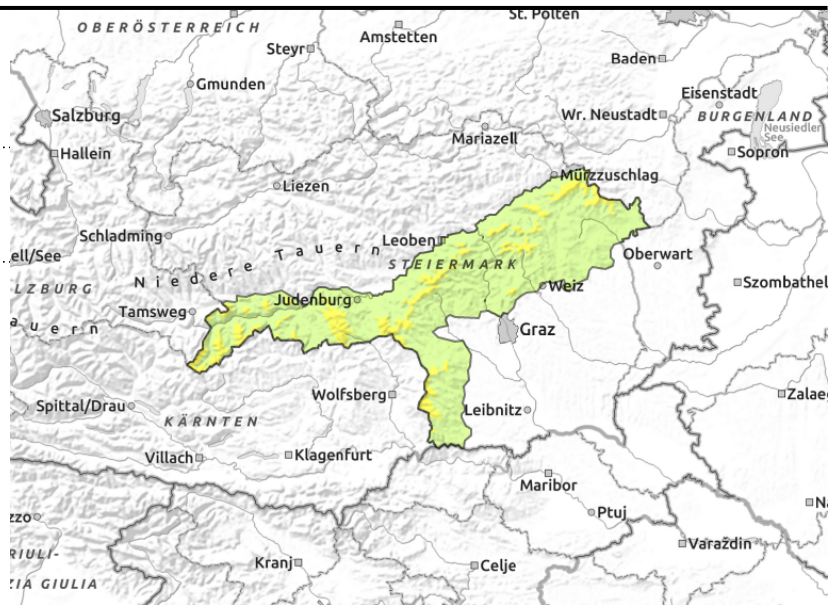
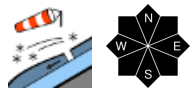
Danger ratings



Expositions



Koralpe, Gurktaler Alpen, Seetaler Alpen, Stub- und Gleinalpe, Westliche Fischbacher Alpen und Grazer Bergland, Östliche Fischbacher Alpen und Wechselgebiet



Beware snowdrifts above timberline

Danger zones for slab avalanches occur esp. in steep ridgeline terrain and on laterally wind-loaded slopes (discontinuities, precipices in the terrain) above the treeline in all aspects, releases mostly by large additional loading, by 1 person in isolated cases.

Apart from that, fresh snow on very steep zones can glide, esp. if there is more snowfall/rainfall, small-to-medium glide-snow avalanches possible.

Snowpack structure

Along the Styrian rimline ranges and in Gurktal/Seetal Alps, up to 60 cm of fresh snow has been registered since Monday night. With ascending snowfall levels the snow became moist and heavy, above the treeline it remained loose. Despite only moderate, variable winds, snowdrifts have accumulated in all aspects, potential weak layers in the form of soft layering are possible. Outside of that, on slopes which were previously bare of snow, bonding to the warm ground is poor.

Weather

On Thursday the perturbances will diminish, weather improve slightly, clouds slowly begin to disperse, and typical April weather will return: sunshine, clouds...and graupel showers. Air masses are initially still cold. At 2000 m: -5 degrees; at 1500 m: -1 degree.

On Friday the air current will shift to southwesterly, it will become warmer. Styrian mountain weather will remain capricious with sunny phases, also convective cloud build-up over the summits and ridges.

Outlook

Diminishing slab danger due to settling of the snowpack (warmth/radiation).

Avalanche problems



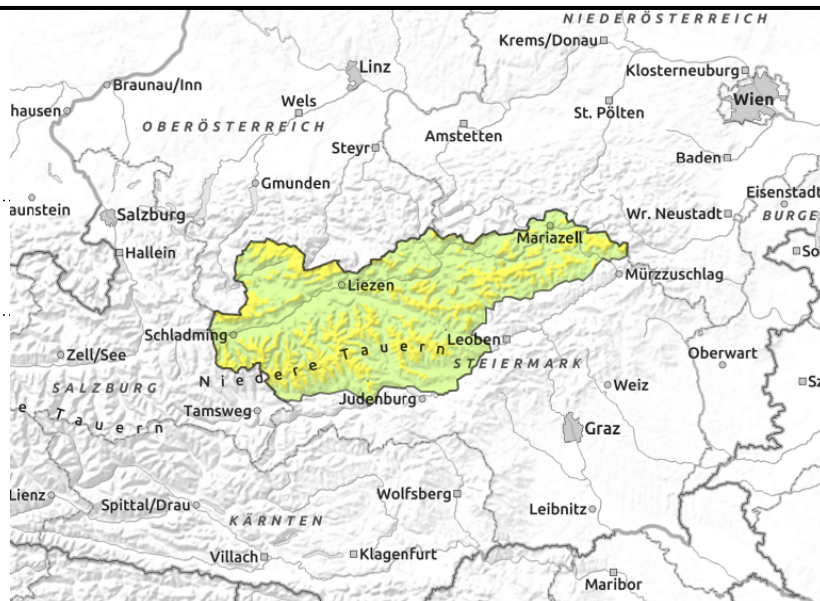
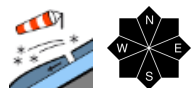
Danger ratings



Expositions



Totes Gebirge, Dachsteingebiet, Schladminger Tauern Nord, Schladminger Tauern Süd, Südliche Wölzer Tauern, Nördliche Wölzer Tauern, Ennstaler Alpen, Gaaler Alpen, Triebener Tauern, Eisenerzer Alpen, Hochschwabgebiet, Mürzsteger Alpen, Rottenmanner Tauern



Keep an eye on delayed settling of snowdrift zones and danger signals

Danger zones for slab avalanches occur esp. in steep ridgeline terrain and on laterally wind-loaded slopes (discontinuities, precipices in the terrain) above the treeline in all aspects, releases mostly by large additional loading, by 1 person in isolated cases.

Danger of moist and dry loose-snow avalanches has receded, natural triggerings still possible.

Small-to-medium glide-snow avalanches can release naturally on steep smooth slopes. Avoid zones below glide cracks.

Snowpack structure

The snowfall of last week has been able to settle, there was less snowfall on Tuesday night than anticipated (up to 20 cm in Eisenerz Alps), but there was snow transport. As a result of varying wind directions, snowdrifts were generated in all aspects.

Weather

On Thursday the perturbances will diminish, weather improve slightly, clouds slowly begin to disperse, and typical April weather will return: sunshine, clouds...and graupel showers. Air masses are initially still cold. At 2000 m: -5 degrees; at 1500 m: -1 degree.

On Friday the air current will shift to southwesterly, it will become warmer. Styrian mountain weather will remain capricious with sunny phases, also convective cloud build-up over the summits and ridges.

Outlook

Diminishing slab danger due to settling of the snowpack (warmth/radiation). Slightly rising loose-snow activity.

Avalanche problems



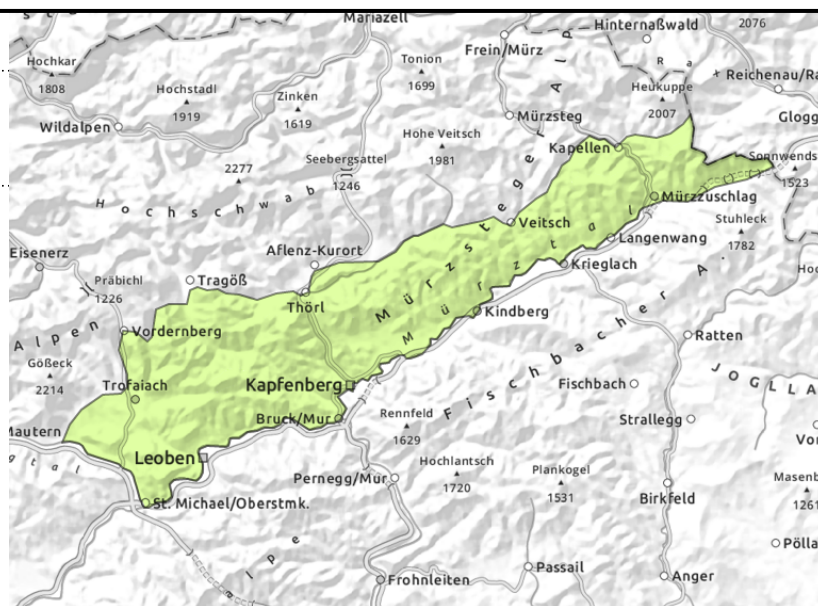
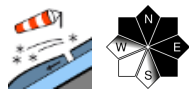
Danger ratings



Expositions



Mürztaler Alpen



In isolated cases: still trigger-prone snowdrift accumulations

Danger zones for slab avalanches occur esp. in steep ridgeline terrain and on laterally wind-loaded slopes (discontinuities, precipices in the terrain) above the treeline in all aspects, releases mostly by large additional loading, by 1 person in isolated cases.

Apart from that, fresh snow on very steep zones can glide, esp. if there is more snowfall/rainfall, small-to-medium glide-snow avalanches possible.

Snowpack structure

Along the Styrian rimline ranges and in Gurktal/Seetal Alps, up to 60 cm of fresh snow has been registered since Monday night. With ascending snowfall levels the snow became moist and heavy, above the treeline it remained loose. Despite only moderate, variable winds, snowdrifts have accumulated in all aspects, potential weak layers in the form of soft layering are possible. Outside of that, on slopes which were previously bare of snow, bonding to the warm ground is poor.

Weather

On Thursday the perturbances will diminish, weather improve slightly, clouds slowly begin to disperse, and typical April weather will return: sunshine, clouds...and graupel showers. Air masses are initially still cold. At 2000 m: -5 degrees; at 1500 m: -1 degree.

On Friday the air current will shift to southwesterly, it will become warmer. Styrian mountain weather will remain capricious with sunny phases, also convective cloud build-up over the summits and ridges.

Outlook

Diminishing slab danger due to settling of the snowpack (warmth/radiation).

Translated by Jeffrey McCabe, www.creativtrans.com

Avalanche problems



Danger ratings



Expositions

