










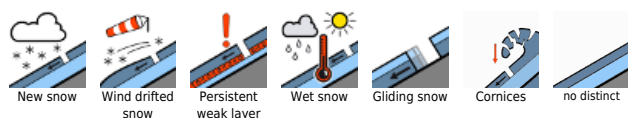


Heavy snowfall in northern barrier cloud regions. Considerable danger of snowdrift-fueled avalanches.

	1800 m	Eisererz Alpen, Hochschwabgebiet, Nördliche Wölzer Tauern, Schladminger Tauern Nord, Rottenmanner Tauern, Triebener Tauern		
		Östliche Fischbacher Alpen und Wechselgebiet, Mürtzsteger Alpen, Westliche Fischbacher Alpen und Grazer Bergland, Stub- und Gleinalpe, Seetaler Alpen, Gurktaler Alpen, Koralpe, Gaaler Alpen, Südliche Wölzer Tauern, Schladminger Tauern Süd		
	1800 m	Totes Gebirge, Dachsteingebiet, Ennstaler Alpen		  

Avalanche problems



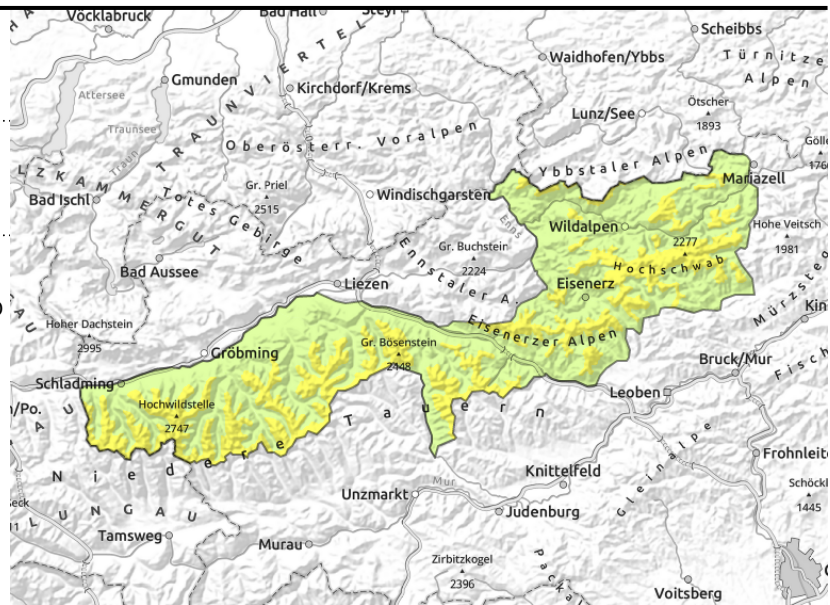
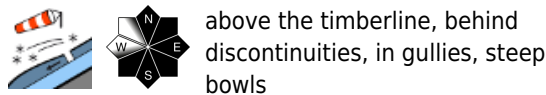
Danger ratings



Expositions



Eisenerzer Alpen, Hochschwabgebiet, Nördliche Wölzer Tauern, Schladminger Tauern Nord, Rottenmanner Tauern, Triebener Tauern



Circumvent trigger-prone snowdrift accumulations

Avalanche danger is moderate above 1800 m, below that altitude danger is low. Fresh trigger-prone snowdrifts are the main danger. Danger zones occur on N/E/S facing slopes at entries to steep gullies and bowls and in general behind discontinuities in the terrain where fresh snowdrifts can trigger a medium slab avalanche by 1 person down to the treeline, releases up to medium size. Frequency and size of danger zones increase with ascending altitude.

Snowpack structure

The fresh snow (10-30 cm) of the last few days lies deposited atop a compact snowpack base. The old snow is thoroughly moist, but was able to consolidate due to the lower temperatures in recent days. The fresh snow is well bonded with the old snowpack. Further snowfall plus brisk W/NW winds will generate fresh small snowdrift accumulations, bonding to the loose fresh fallen snow will be poor, prone to triggering.

Weather

A cold front will strike the Eastern Alps during the night. Heavily overcast skies from Dachstein to Hochschwab all day on Saturday, poor visibility, in places persistent snowfall, snowfall level at 800 m in Totes Gebirge and 1200 m near the Koralpe. Particularly at high altitudes of the barrier cloud regions, 30 cm of fresh snow is possible, elsewhere in the Northern Alps 10-20 cm. On the southern flank of the Alps, intermittent sunshine, most of the peaks will be in the clear. In afternoon, snow showers are possible along Niedere Tauern as far as Hochschwab (up to 70 km/hr), brisk winds also elsewhere. At 2000 m: -6 degrees.

Outlook

Weather will remain changeable and cool, along the northern flank of the Alps repeated bouts of snowfall. Avalanche danger levels are not expected to change significantly.

Avalanche problems



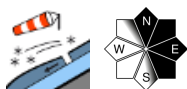
Danger ratings



Expositions



Östliche Fischbacher Alpen und Wechselgebiet, Mürzsteiger Alpen, Westliche Fischbacher Alpen und Grazer Bergland, Stub- und Gleinalpe, Seetaler Alpen, Gurktaler Alpen, Koralpe, Gaaler Alpen, Südliche Wölzer Tauern, Schladminger Tauern Süd



small, thin snowdrift patches

Low avalanche danger but isolated danger zones from fresh snowdrifts

Avalanche danger is generally low. Fresh snowdrifts at high altitudes can trigger small slab avalanches in isolated cases. Danger zones occur near ridges, at entries into steep gullies and bowls and behind discontinuities in the terrain.

Snowpack structure

On what was previously bare ground or atop a moist compact old snowpack the fresh snow and drifts from the beginning of the week lie deposited, well bonded with the snowpack and already settled. Further snowfall and strong winds will generate fresh thin snowdrift patches. Potential weak layers: loose layers inside the snowdrifts or the blanketed fresh snow.

Weather

In evening the clouds will disperse except for in the northern barrier cloud regions. Also on Friday on the northern flank of the Alps, heavily overcast all day long, extended pauses. As of midday, increasing snow or graupel showers, later spreading to the Niedere Tauern. On the southern flank of the Alps nighttime skies will be clear, mostly dry. Also Friday morning, some sunshine, a few hours of cloudless skies. In afternoon, clouds will become heavier, a few snow showers are possible. Winds will be moderate, initially from the northwest, later more from the west. At 2000 m: -7 degrees in early morning, -4 degrees in afternoon.

Outlook

Weather will remain changeable and cool, avalanche danger will remain low.

Avalanche problems



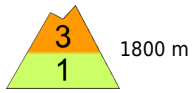
Danger ratings





Expositions

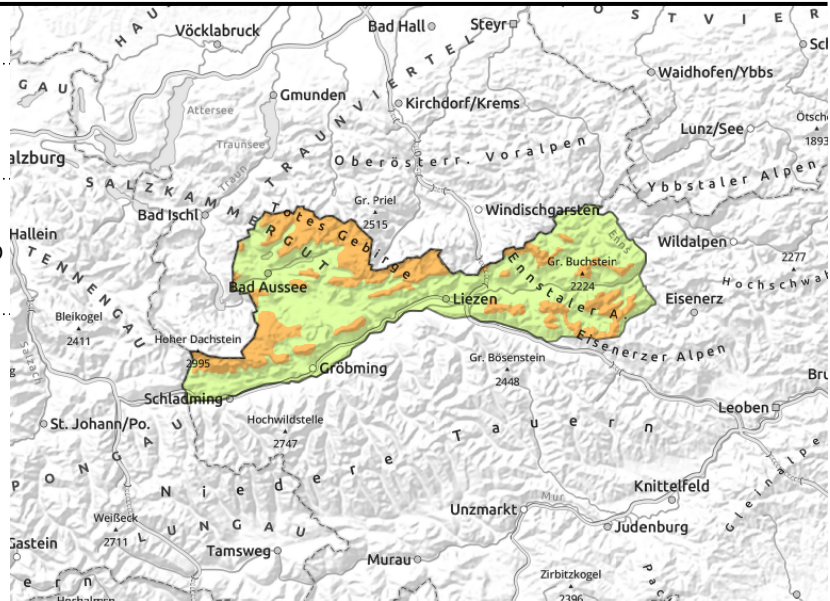


Totes Gebirge, Dachsteingebiet, Ennstaler Alpen



  above the timberline, behind discontinuities, in gullies, steep bowls

  heavy fresh snowfall



Beware trigger-prone snowdrift accumulations

Avalanche danger is considerable above 1800 m, below that altitude danger is low. Fresh trigger-prone snowdrifts are the main danger. Danger zones occur on N/E/SW facing slopes at entries to steep gullies and bowls and in general behind discontinuities in the terrain where fresh snowdrifts can trigger a medium slab avalanche by 1 person down to the treeline, releases up to medium size. Frequency and size of danger zones increase with ascending altitude. Sometimes during descents, small loose-snow avalanches can be triggered in the fresh fallen snow or trigger naturally in extremely steep terrain during the course of the day.

Snowpack structure

The fresh snow (40-60 cm) of the last few days lies deposited atop a compact snowpack base. The old snow is thoroughly moist, but was able to consolidate due to the lower temperatures in recent days. The fresh snow is well bonded with the old snowpack. Further snowfall plus brisk W/NW winds will generate fresh small snowdrift accumulations, bonding to the loose fresh fallen snow will be poor, bringing a weak layer for slab avalanches.

Weather

A cold front will strike the Eastern Alps during the night. Heavily overcast skies from Dachstein to Hochschwab all day on Saturday, poor visibility, in places persistent snowfall, snowfall level at 800 m in Totes Gebirge and 1200 m near the Koralpe. Particularly at high altitudes of the barrier cloud regions, 30 cm of fresh snow is possible, elsewhere in the Northern Alps 10-20 cm. On the southern flank of the Alps, intermittent sunshine, most of the peaks will be in the clear. In afternoon, snow showers are possible along Niedere Tauern as far as Hochschwab (up to 70 km/hr), brisk winds also elsewhere. At 2000 m: -6 degrees.

Outlook

Weather will remain changeable and cool, along the northern flank of the Alps repeated bouts of snowfall. Avalanche danger levels will slowly recede.

Translated by Jeffrey McCabe, www.creativtrans.com

Avalanche problems



Danger ratings



Expositions

