

## Fresh snowdrifts continue in northern barrier cloud regions



2000 m

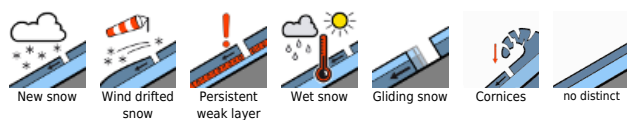
Dachsteingebiet, Totes Gebirge, Ennstaler Alpen, Eisenerzer Alpen, Hochschwabgebiet, Nördliche Wölzer Tauern, Schladminger Tauern Nord, Rottenmanner Tauern



Östliche Fischbacher Alpen und Wechselgebiet, Mürzsteger Alpen, Westliche Fischbacher Alpen und Grazer Bergland, Stub- und Gleinalpe, Seetaler Alpen, Gurktaler Alpen, Koralpe, Gaaler Alpen, Südliche Wölzer Tauern, Schladminger Tauern Süd, Triebener Tauern



### Avalanche problems



### Danger ratings



### Expositions



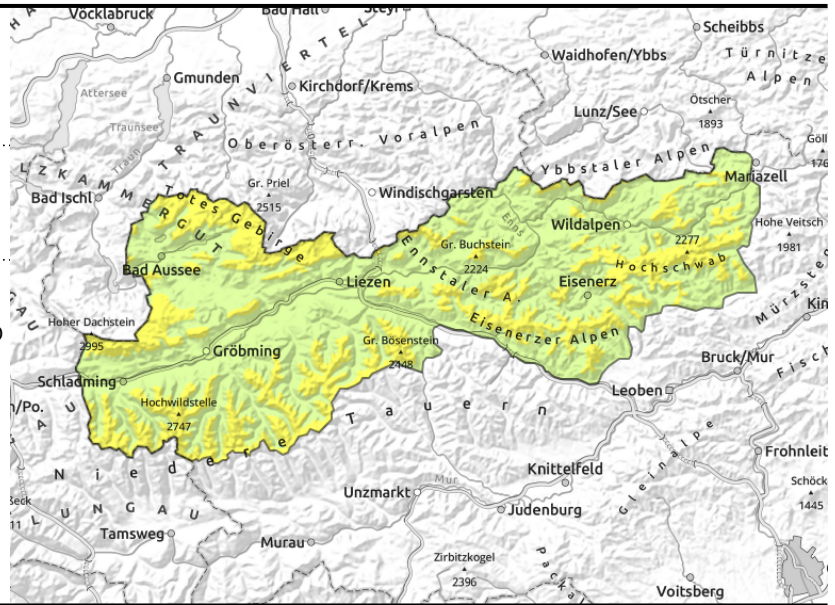
**Dachsteingebiet, Totes Gebirge, Ennstaler Alpen, Eisenerzer Alpen, Hochschwabgebiet, Nördliche Wölzer Tauern, Schladminger Tauern Nord, Rottenmanner Tauern**



2000 m



above the timberline, behind discontinuities, in gullies, steep bowls



**Wintery conditions continue: fresh snow + wind. Main danger: fresh snowdrifts.**

Avalanche danger is moderate above 2000 m, below that altitude danger is low. Danger zones occur on N/E/S facing slopes at entries to steep gullies and bowls and in general behind discontinuities in the terrain where fresh snowdrifts can trigger a medium slab avalanche by 1 person.

**Snowpack structure**

The snowpack base has consolidated due to lower temperatures and formed a melt-freeze crust at the transition to the fresh snow. Atop of it, fresh snow has been deposited since Sunday evening, partly transported by W/NW winds. The fresh snowdrifts may contain weak layers or could develop weak layers at transitions to the old snow.

**Weather**

Clouds will disperse in evening except in the northern barrier cloud regions where snow showers will repeatedly return. Also on Friday on the northern flank of the Alps, heavily overcast all day long, extended pauses. As of midday, increasing snow or graupel showers, later spreading to the Niedere Tauern. On the southern flank of the Alps nighttime skies will be clear, mostly dry. Also Friday morning, some sunshine, a few hours of cloudless skies. In afternoon, clouds will become heavier, a few snow showers are possible. Winds will be moderate, initially from the northwest, later more from the west. At 2000 m: -7 degrees in early morning, -4 degrees in afternoon.

**Outlook**

Weather will remain changeable and cool, along the northern flank of the Alps repeated bouts of snowfall. Avalanche danger levels are not expected to change significantly.

**Avalanche problems**



**Danger ratings**



**Expositions**



Östliche Fischbacher Alpen und Wechselgebiet, Mürzsteiger Alpen, Westliche Fischbacher Alpen und Grazer Bergland, Stub- und Gleinalpe, Seetaler Alpen, Gurktaler Alpen, Koralpe, Gaaler Alpen, Südliche Wölzer Tauern, Schladminger Tauern Süd, Triebener Tauern



small, thin snowdrift patches, near ridges, behind discontinuities in the terrain

## Low avalanche danger but isolated danger zones from fresh snowdrifts

Avalanche danger is generally low, but above the timberline on E/S facing slopes at entries into gullies and bowls and behind discontinuities there are isolated danger zones where 1 person can trigger snowdrifts and release a slab avalanche.

As a result of solar radiation, small loose-snow slides can release naturally in extremely steep terrain.

### Snowpack structure

The snowpack base has consolidated due to lower temperatures. Weak layers likeliest inside the ridgeline snowdrift accumulations or in transitions to the old snowpack.

### Weather

Clouds will disperse in evening except in the northern barrier cloud regions where snow showers will repeatedly return. Also on Friday on the northern flank of the Alps, heavily overcast all day long, extended pauses. As of midday, increasing snow or graupel showers, later spreading to the Niedere Tauern. On the southern flank of the Alps nighttime skies will be clear, mostly dry. Also Friday morning, some sunshine, a few hours of cloudless skies. In afternoon, clouds will become heavier, a few snow showers are possible. Winds will be moderate, initially from the northwest, later more from the west. At 2000 m: -7 degrees in early morning, -4 degrees in afternoon.

### Outlook

Weather will remain changeable and cool, along the northern flank of the Alps repeated bouts of snowfall. Avalanche danger levels are not expected to change significantly.

Translated by Jeffrey McCabe, [www.creativtrans.com](http://www.creativtrans.com)

#### Avalanche problems



#### Danger ratings



#### Expositions

