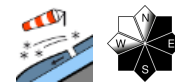


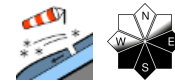
Fresh snowdrifts at high altitudes



Dachsteingebiet, Totes Gebirge, Schladminger Tauern Nord, Ennstaler Alpen, Rottenmanner Tauern, Nördliche Wölzer Tauern, Schladminger Tauern Süd, Südliche Wölzer Tauern, Triebener Tauern, Eisenerzer Alpen, Hochschwabgebiet, Seetaler Alpen, Gurktaler Alpen, Stub- und Gleinalpe, Korralpe, Gaaler Alpen



Östliche Fischbacher Alpen und Wechselgebiet, Westliche Fischbacher Alpen und Grazer Bergland, Mürzsteger Alpen



Avalanche problems



Danger ratings



Expositions



Dachsteingebiet, Totes Gebirge, Schladminger Tauern Nord, Ennstaler Alpen, Rottenmanner Tauern, Nördliche Wölzer Tauern, Schladminger Tauern Süd, Südliche Wölzer Tauern, Triebener Tauern, Eisenerzer Alpen, Hochschwabgebiet, Seetaler Alpen, Gurktaler Alpen, Stub- und Gleinalpe, Koralpe, Gaaler Alpen



forestline



above the treeline

At high altitudes moderate avalanche danger due to fresh drifts

Above the treeline avalanche danger is moderate, below that altitude danger is low. Danger zones occur on E/S facing slopes at entries to steep gullies and bowls and in general behind discontinuities in the terrain where fresh snowdrifts can trigger a medium slab avalanche by 1 person.

Snowpack structure

The snowpack base has consolidated due to lower temperatures and formed a melt-freeze crust at the transition to the fresh snow. Atop of it, 30 cm of fresh snow has been deposited since Sunday evening, partly transported to E/S facing terrain. The fresh snowdrifts may contain weak layers or could develop weak layers at transitions to the old snow.

Weather

Wednesday will bring instable and cool weather. Along the northern flank of the Alps, gray skies, repeated bouts of snowfall, snowfall level at 900 m. South of the Main Alpine Ridge the clouds could disperse somewhat, only isolated snow showers are anticipated. At 2000 m: -4 degrees. Strong NW winds, slackening off later in the day.

Outlook

Weather will remain capricious and cool, along the northern flank of the Alps repeated rounds of snowfall. Avalanche danger levels are not expected to change significantly.

Avalanche problems



Danger ratings



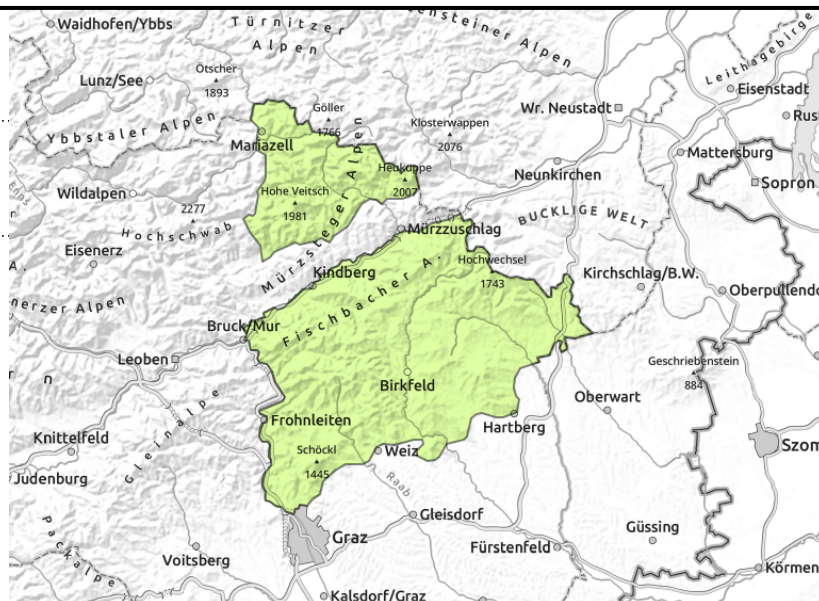
Expositions



**Östliche Fischbacher Alpen und Wechselgebiet,
Westliche Fischbacher Alpen und Grazer Bergland,
Mürzsteiger Alpen**



small, thin snowdrift patches



Low avalanche danger but isolated danger zones from fresh snowdrifts

Avalanche danger is generally low, but above the timberline on E/S facing slopes at entries into gullies and bowls and behind discontinuities there are isolated danger zones where 1 person can trigger snowdrifts and release a slab avalanche.

Snowpack structure

The snowpack base has consolidated due to lower temperatures and formed a melt-freeze crust at the transition to the fresh snow. Atop of it, 10 cm of fresh snow has been deposited since Sunday evening, partly transported to E/S facing terrain. The fresh snowdrifts may contain weak layers or could develop weak layers at transitions to the old snow.

Weather

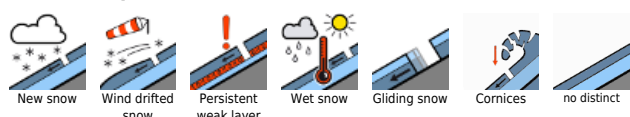
Wednesday will bring instable and cool weather. Along the northern flank of the Alps, gray skies, repeated bouts of snowfall, snowfall level at 900 m. South of the Main Alpine Ridge the clouds could disperse somewhat, only isolated snow showers are anticipated. At 2000 m: -4 degrees. Strong NW winds, slackening off later in the day.

Outlook

Weather will remain capricious and cool, along the northern flank of the Alps repeated rounds of snowfall. Avalanche danger levels are not expected to change significantly.

Translated by Jeffrey McCabe, www.creativtrans.com

Avalanche problems



Danger ratings



Expositions

