

Beware wet-snow/gliding snow activity in very steep terrain



Triebener Tauern, Dachsteingebiet, Schladminger Tauern Nord, Schladminger Tauern Süd, Südliche Wölzer Tauern, Nördliche Wölzer Tauern, Rottenmanner Tauern, Totes Gebirge, Ennstaler Alpen



Eisenerzer Alpen, Gaaler Alpen, Seetaler Alpen, Gurktaler Alpen, Hochschwabgebiet



Avalanche problems



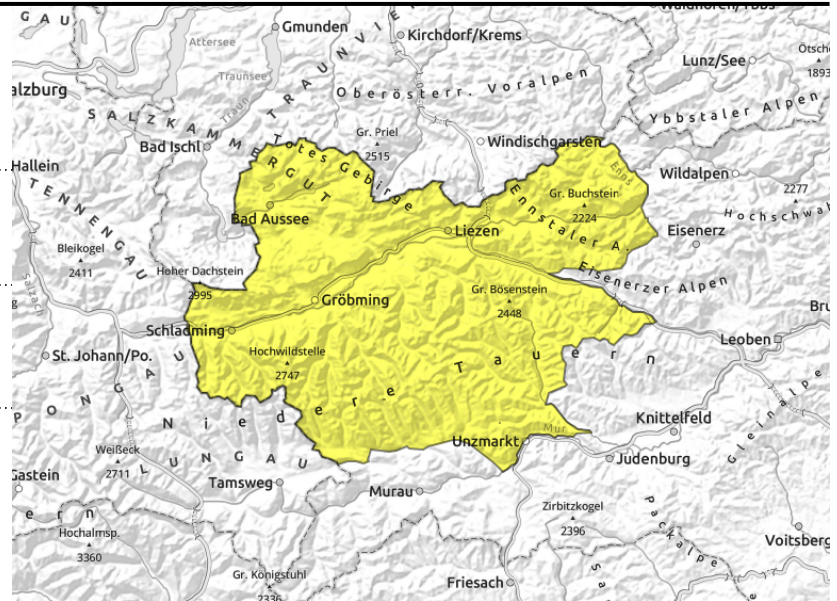
Danger ratings



Expositions



Triebener Tauern, Dachsteingebiet, Schladminger Tauern Nord, Schladminger Tauern Süd, Südliche Wölzer Tauern, Nördliche Wölzer Tauern, Rottenmanner Tauern, Totes Gebirge, Ennstaler Alpen



in extremely steep grass-covered terrain



as rainfall sets in

Moderate danger of naturally triggered glide-snow/wet-snow avalanches

Avalanche danger is moderate. Main danger: glide-snow/wet-snow avalanches, possible at any time on very steep slopes and can plummet down to slopes bare of snow on the ground.

Snowpack structure

The snowpack has used up all its reserves of cold up to summit levels in all aspects, is isotherm and moist. Loss of stability inside the snowpack or down to the ground will increase as rainfall sets in as of midday. Snow depths will recede further, a cohesive snowpack exists only at high altitudes.

Weather

Starting on Monday, instable conditions, a cold front from the northwest will increase cloud cover and make temperatures drop. In early morning: +8 degrees at 2000 m; in evening: +4 degrees in the north, +6 degrees in the south. In the northern ranges, showers are possible as of midday, in the south it will remain sunnier for longer and dry until evening. Stormy W/SW winds. Snowfall level on Monday over 2000 m, temperatures will drop on Tuesday.

Outlook

On Tuesday, gray and wet all day long, the peaks often in fog. In southern regions rainfall will be stronger, snowfall down to below 1000 m. At 2000 m: -4 degrees in evening. Stormy NW winds will generate new snowdrifts.

Avalanche problems



New snow



Wind drifted snow



Persistent weak layer



Wet snow



Gliding snow



Cornices



no distinct

Danger ratings



1

low



2

moderate



3

considerable



4

high



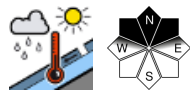
5

very high

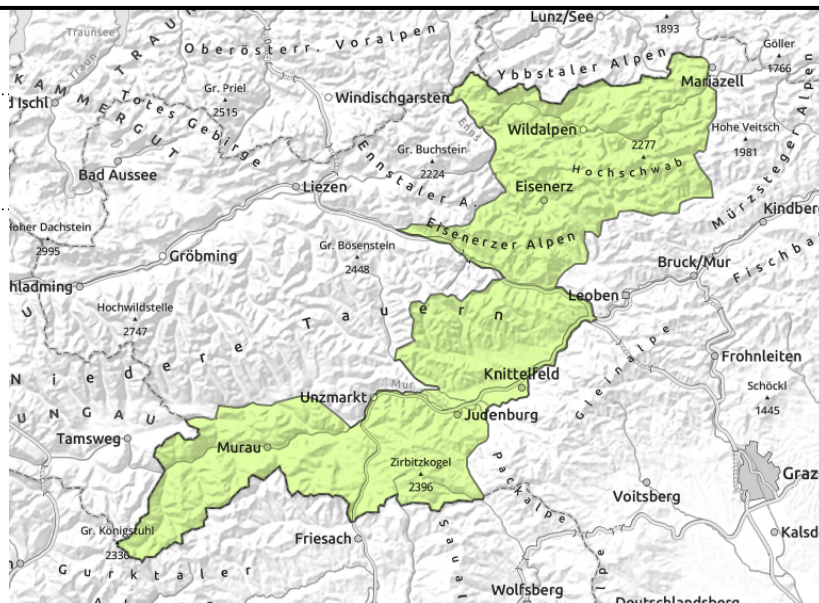
Expositions



**Eisenerzer Alpen, Gaaler Alpen, Seetaler Alpen,
Gurktaler Alpen, Hochschwabgebiet**



increasing as rainfall sets in



Low danger, snow on the ground only on north-facing slopes

Very isolated wet-snow slides on steep north-facing slopes/gullies, likelier as rainfall sets in

Snowpack structure

The wet snowpack is losing its firmness, wet loose-snow avalanches can release at any time. As rainfall sets in, likelihood of natural triggerings increases. The slopes are rapidly becoming bare of snow, except for north-facing slopes.

Weather

Starting on Monday, instable conditions, a cold front from the northwest will increase cloud cover and make temperatures drop. In early morning: +8 degrees at 2000 m; in evening: +4 degrees in the north, +6 degrees in the south. In the northern ranges, showers are possible as of midday, in the south it will remain sunnier for longer and dry until evening. Stormy W/SW winds. Snowfall level on Monday over 2000 m, temperatures will drop on Tuesday.

Outlook

On Tuesday, gray and wet all day long, the peaks often in fog. In southern regions rainfall will be stronger, snowfall down to below 1000 m. At 2000 m: -4 degrees in evening. Avalanche danger levels are not expected to change significantly.

Translated by Jeffrey McCabe, www.creativtrans.com

Avalanche problems



Danger ratings



Expositions

