

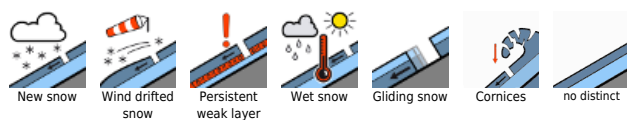
## Daytime cycle of avalanche danger



Dachsteingebiet, Totes Gebirge, Schladminger Tauern Nord, Ennstaler Alpen, Nördliche Wölzer Tauern, Rottenmanner Tauern, Schladminger Tauern Süd, Südliche Wölzer Tauern, Triebener Tauern, Eisenerzer Alpen, Hochschwabgebiet, Gurktaler Alpen, Seetaler Alpen



### Avalanche problems

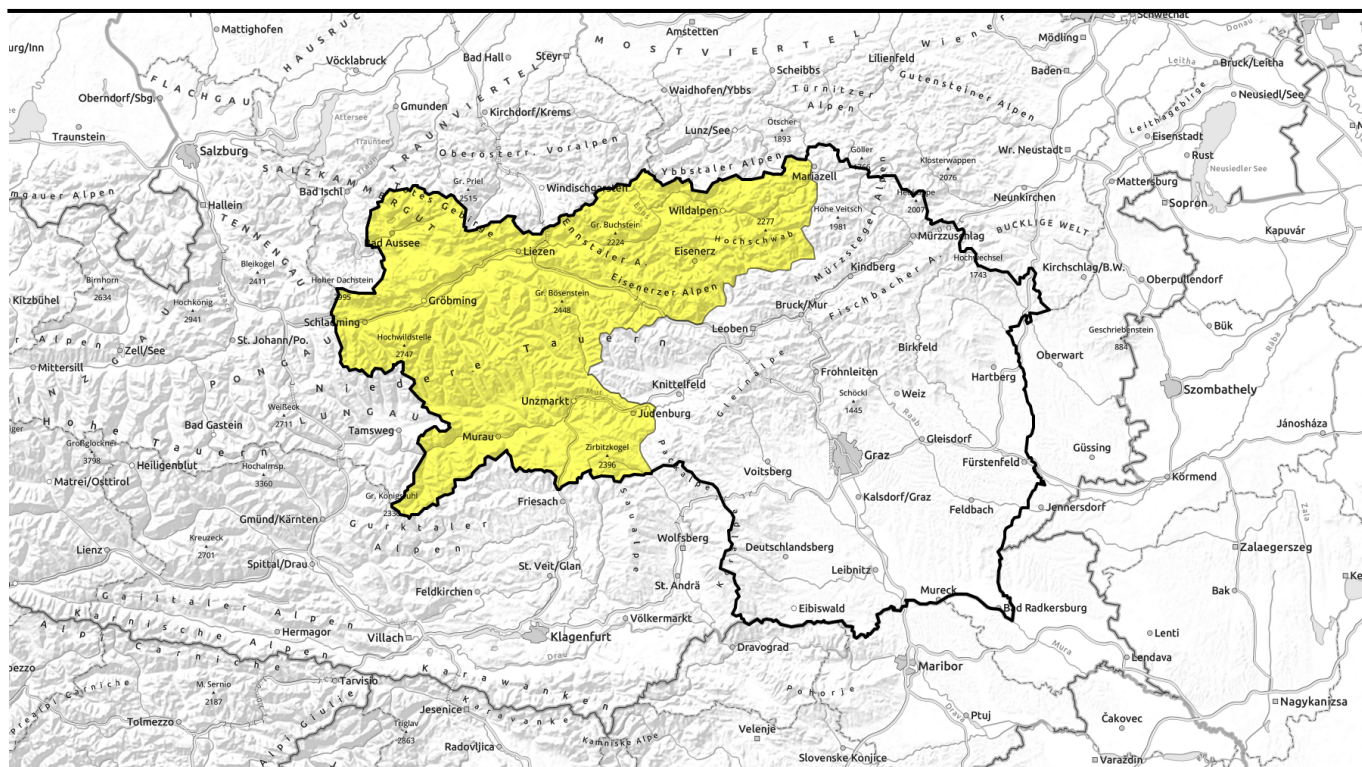


### Danger ratings



### Expositions





## Tagesgang der Lawinengefahr!



Dachsteingebiet, Totes Gebirge, Schladminger Tauern Nord, Ennstaler Alpen, Nördliche Wölzer Tauern, Rottenmanner Tauern, Schladminger Tauern Süd, Südliche Wölzer Tauern, Triebener Tauern, Eisenerzer Alpen, Hochschwabgebiet, Gurktaler Alpen, Seetaler Alpen



### Avalanche problems



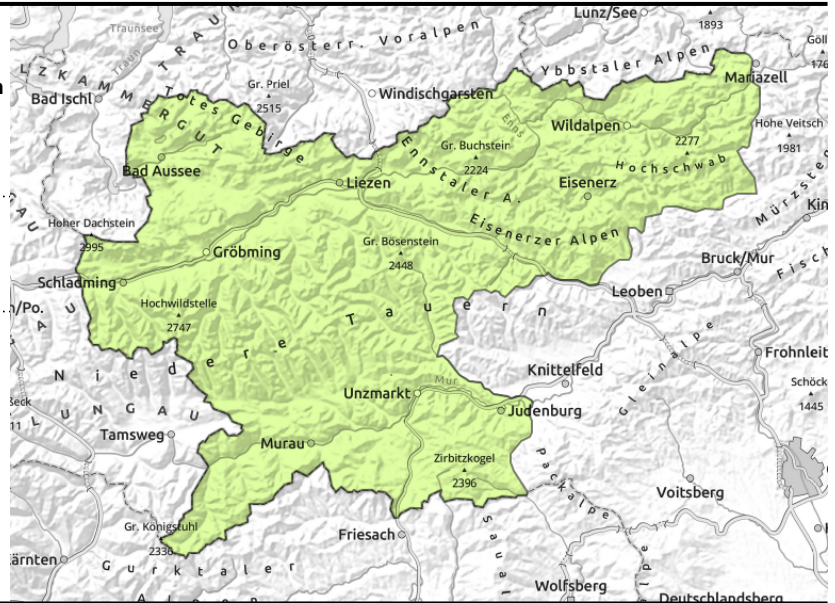
### Danger ratings



### Expositions



**Dachsteingebiet, Totes Gebirge, Schladminger Tauern Nord, Ennstaler Alpen, Nördliche Wölzer Tauern, Rottenmanner Tauern, Schladminger Tauern Süd, Südliche Wölzer Tauern, Triebener Tauern, Eisenerzer Alpen, Hochschwabgebiet, Gurktaler Alpen, Seetaler Alpen**



on extremely steep grass-covered slopes

## Favorable conditions

Avalanche danger is subject to a daytime danger cycle. Due to warmth and solar radiation, avalanche danger increases to moderate in afternoon. Gliding snow remains the main problem. Isolated naturally triggered glide-snow avalanches cannot be ruled out on steep slopes which have not yet discharged. Isolated loose-snow slides in steep rough and rocky terrain are possible.

## Snowpack structure

Due to rainfall the snow up to summit levels has become wet and heavy. The snowpack base is thoroughly wet up to high altitudes. Due to warmth penetrating the snowpack it is losing its firmness.

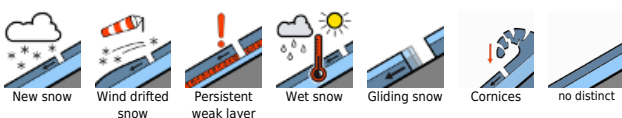
## Weather

Friday morning will be cloudy, rainfall is expected in the Northern Alps. As of midday, sunshine will gradually prevail. The W/NW winds will remain light to moderate. stronger on the eastern rim of the Alps. At 2000 m: 4-9 degrees.

## Outlook

On Saturday, lots of sunshine and very mild. Daytime cycle of avalanche danger. Backcountry tours should be terminated early in the day.

### Avalanche problems



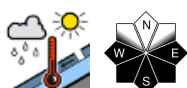
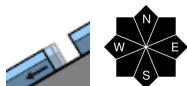
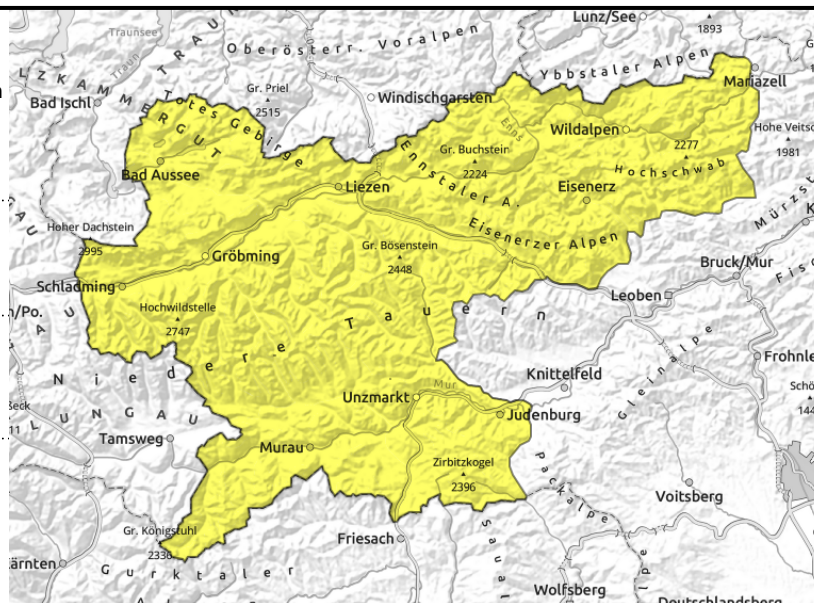
### Danger ratings



### Expositions



Dachsteingebiet, Totes Gebirge, Schladminger Tauern Nord, Ennstaler Alpen, Nördliche Wölzer Tauern, Rottenmanner Tauern, Schladminger Tauern Süd, Südliche Wölzer Tauern, Triebener Tauern, Eisenerzer Alpen, Hochschwabgebiet, Gurktaler Alpen, Seetaler Alpen



hefty impulse of warmth

## Favorable conditions

Avalanche danger is subject to a daytime danger cycle. Due to warmth and solar radiation, avalanche danger increases to moderate in afternoon. Gliding snow remains the main problem. Isolated naturally triggered glide-snow avalanches cannot be ruled out on steep slopes which have not yet discharged. Isolated loose-snow slides in steep rough and rocky terrain are possible.

## Snowpack structure

Due to rainfall the snow up to summit levels has become wet and heavy. The snowpack base is thoroughly wet up to high altitudes. Due to warmth penetrating the snowpack it is losing its firmness.

## Weather

Friday morning will be cloudy, rainfall is expected in the Northern Alps. As of midday, sunshine will gradually prevail. The W/NW winds will remain light to moderate. Stronger on the eastern rim of the Alps. At 2000 m: 4-9 degrees.

## Outlook

On Saturday, lots of sunshine and very mild. Daytime cycle of avalanche danger. Backcountry tours should be terminated early in the day.

Translated by Jeffrey McCabe, [www.creativtrans.com](http://www.creativtrans.com)

### Avalanche problems



### Danger ratings



### Expositions

