

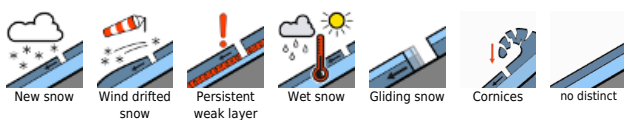
Glide-snow avalanches. Heavy rainfall in early nighttime hours.



Dachsteingebiet, Totes Gebirge, Schladminger Tauern Nord, Ennstaler Alpen, Nördliche Wölzer Tauern, Rottenmanner Tauern, Schladminger Tauern Süd, Südliche Wölzer Tauern, Triebener Tauern, Eisenerzer Alpen, Hochschwabgebiet, Gurktaler Alpen, Seetaler Alpen



Avalanche problems



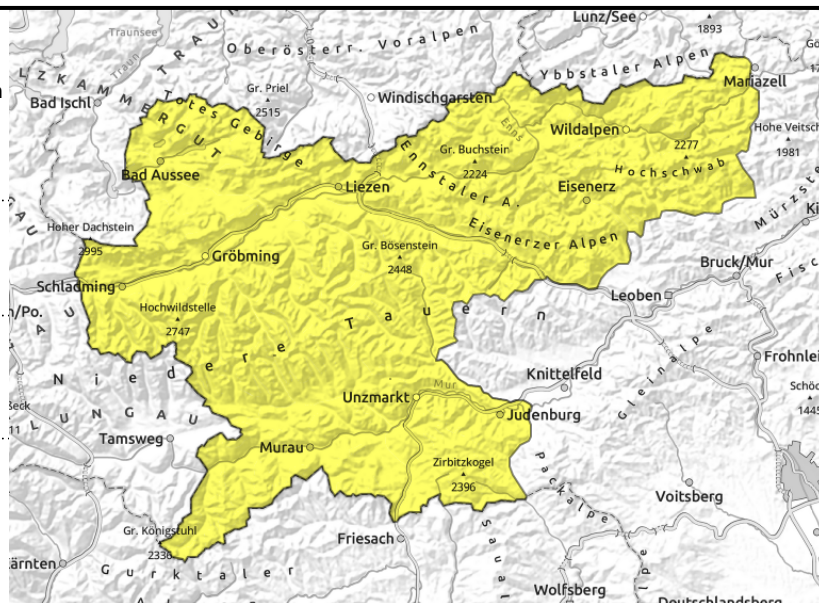
Danger ratings



Expositions



Dachsteingebiet, Totes Gebirge, Schladminger Tauern Nord, Ennstaler Alpen, Nördliche Wölzer Tauern, Rottenmanner Tauern, Schladminger Tauern Süd, Südliche Wölzer Tauern, Triebener Tauern, Eisenerzer Alpen, Hochschwabgebiet, Gurktaler Alpen, Seetaler Alpen



possible at any time of day or night



as rain sets in

First, rainfall up to high altitudes. Then, dropping temperatures.

Avalanche danger is still moderate: due to nocturnal rainfall wet-snow and glide-snow avalanches continue to be naturally triggerable, they can plummet even down to the valleys. In high-alpine zones fresh snowdrift accumulations will be generated which can be triggered by backcountry tourers, esp. on E/N facing slopes.

Snowpack structure

High temperatures over the last few days have done harsh work on the snowpack, it has forfeited its firmness. The snow base is wet, the surface generally soft already in early morning, due to the expected rainfall it is becoming wetter and heavier. At high alpine altitudes it is stabilizing. As temperatures drop, fresh drifts will be generated, poorly bonding with the old snowpack.

Weather

On Monday night, rainfall initially in eastern and southern regions, often heavy. In eastern Styria it will gradually terminate and recede to the north. The snowfall level will drop to 1200 m. On Tuesday, sunshine and clouds will alternate. In afternoon, convective cloud build-up will heighten the tendency towards showers, esp. in southern regions, snow showers above 1700 m. Colder: at 2000 m about 0 degrees. Brisk NW winds.

Outlook

On Wednesday, sunshine in eastern Styria, then cloud cover will move in, but not much precipitation is anticipated. Isolated glide-snow avalanches can't be ruled out in alpine zones.

Translated by Jeffrey McCabe, www.creativtrans.com

Avalanche problems



New snow

Wind drifted snow

Persistent weak layer

Wet snow

Gliding snow

Cornices

no distinct

Danger ratings



1 low

2 moderate

3 considerable

4 high

5 very high

Expositions

