

Stormy foehn winds, high temperatures. Moderate danger from gliding-snow/wet-snow problems



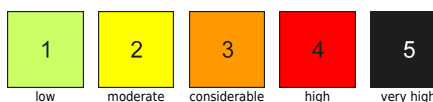
Dachsteingebiet, Totes Gebirge, Schladminger Tauern Nord, Ennstaler Alpen, Nördliche Wölzer Tauern, Rottenmanner Tauern, Schladminger Tauern Süd, Südliche Wölzer Tauern, Triebener Tauern, Eisenerzer Alpen, Hochschwabgebiet, Gurktaler Alpen, Seetaler Alpen



Avalanche problems



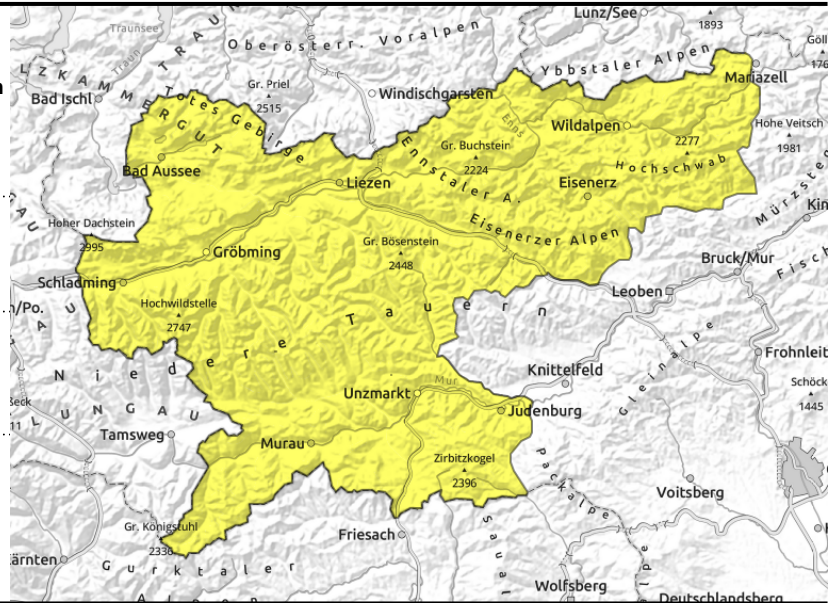
Danger ratings



Expositions



Dachsteingebiet, Totes Gebirge, Schladminger Tauern Nord, Ennstaler Alpen, Nördliche Wölzer Tauern, Rottenmanner Tauern, Schladminger Tauern Süd, Südliche Wölzer Tauern, Triebener Tauern, Eisenerzer Alpen, Hochschwabgebiet, Gurktaler Alpen, Seetaler Alpen



possible at any time of day or night



hefty impulse of warmth

Storm-strength southerly foehn wind

Wet-snow problem: in all aspects, rocky terrain often the starting zone. Danger zones increase with solar radiation. Larger avalanches are possible in isolated cases, also in low altitude, flat-terrain zones.

Gliding snow problem: in all aspects, esp. on steep grass-covered slopes. Start: zones with glide-cracks, shooting cracks. Avoid zones near them! They are possible at any time of day or night. Larger avalanches are possible in isolated cases, also in low altitude, flat-terrain zones.

Snowpack structure

High temperatures over the last few days have done harsh work on the snowpack, it has forfeited its firmness. The snow base is wet, the surface generally soft already in early morning. In spite of storm-strength winds, hardly any new snowdrifts have been generated. But gliding snow masses have increased. The slopes are becoming bare of snow.

Weather

On Easter Monday, initially storm-strength southerly winds blowing over the mountains, reaching 80-100 km/hr, gusts at high altitudes reaching 120 km/hr. From Fishbach Alps to Koralpe, quite sunny weather, but in western regions clouds from a cold front will move in, rainfall will follow. The front will move eastwards as the day progresses, bringing rainfall/snowfall by evening, snowfall level dropping temporarily to 1200 m. Winds will shift to northwesterly, slacken off gradually. At 2000 m: from 6 degrees dropping to -2 degrees by late evening.

Outlook

On Tuesday, clouds and sunshine will alternate. In afternoon, convective cloud build-up esp. in southern regions will increase the tendency towards showers, snow showers above 1600 m. At 2000 m: 0 degrees. Brisk NW winds will be blowing. The wet-snow and gliding snow problems will recede at high altitudes.

Translated by Jeffrey McCabe, www.creativtrans.com

Avalanche problems



Danger ratings



Expositions

