

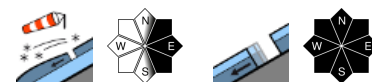
Moderate danger in places due to snowdrifts



forrestline
 Schladminger Tauern Süd, Südliche Wölzer Tauern, Triebener Tauern, Eisenerzer Alpen, Ennstaler Alpen, Rottenmanner Tauern, Nördliche Wölzer Tauern, Totes Gebirge, Dachsteingebiet, Schladminger Tauern Nord, Gurktaler Alpen, Hochschwabgebiet, Seetaler Alpen, Gaaler Alpen



Stub- und Gleinalpe, Koralpe, Mürzsteger Alpen



Avalanche problems



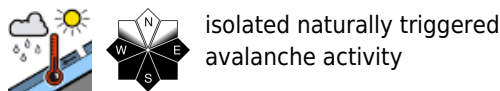
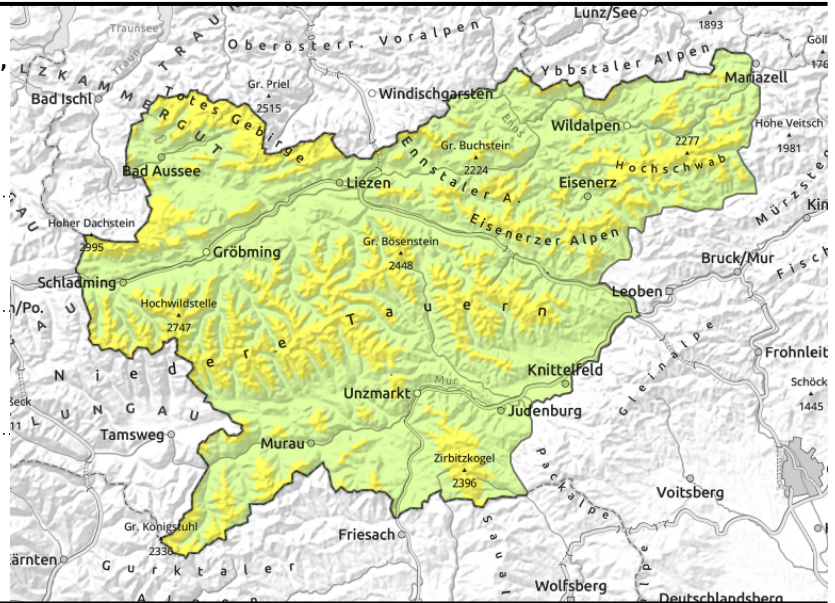
Danger ratings



Expositions



Schladminger Tauern Süd, Südliche Wölzer Tauern, Triebener Tauern, Eisenerzer Alpen, Ennstaler Alpen, Rottenmanner Tauern, Nördliche Wölzer Tauern, Totes Gebirge, Dachsteingebiet, Schladminger Tauern Nord, Gurktaler Alpen, Hochschwabgebiet, Seetaler Alpen, Gaaler Alpen



Moderate avalanche danger at high altitudes due to fresh snowdrift accumulations

Avalanche danger above the treeline is moderate, below that altitude danger is low. Fresh snowdrift accumulations have been deposited in extended E-facing terrain esp. behind discontinuities and in entries to gullies and bowls, they can be triggered by 1 person. Also on steep north-facing slopes there are still weak layers which can easily be triggered, slab avalanches can be medium-sized. Beware daytime rise in temperatures.

Snowpack structure

The fundament is isotherm up to high altitudes, is often losing its attachment to the ground. Atop of it lie deposited on N/E/S facing slopes fresh snowdrift accumulations. Bonding is often poor. Weak layers inside the drifts, like graupel and fresh snow crystals, are possible. In addition, higher temperatures are destabilizing the snowpack.

Weather

On Monday in the Northern Alps, some cloud cover but no snowfall. As of midday, sunshine will prevail. On the southern flank of the Alps, sunshine from early morning. A strong-to-stormy NW wind will be blowing, esp. on the eastern rim of the Alps. In afternoon, the wind will slacken off, shift to southwesterly. At 2000 m: rising from -6 to -2 degrees.

Outlook

Tuesday will bring mild but windy weather to Styria. Winds from the south will be stormy, the sun only slightly hampered by high-altitude clouds. The snowdrift problem will recede.

Avalanche problems



Danger ratings



Expositions



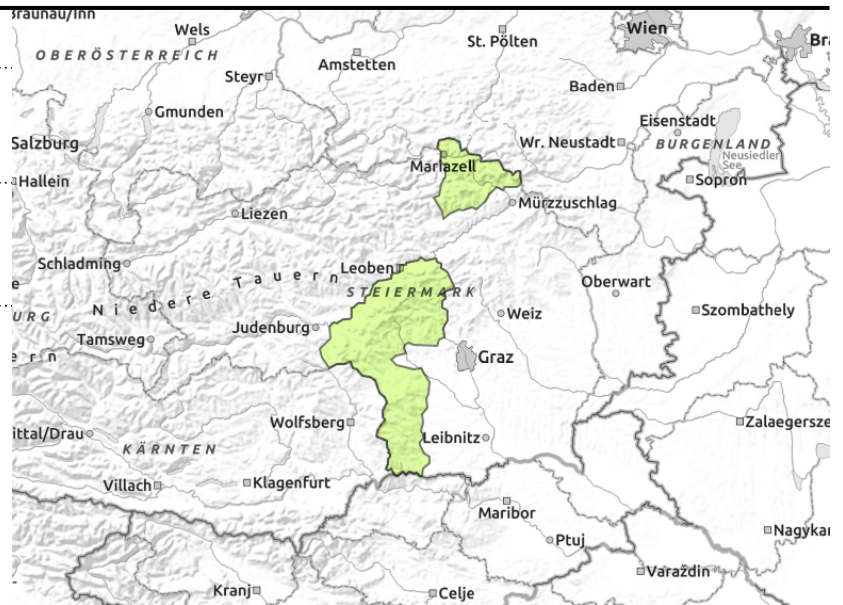
Stub- und Gleinalpe, Koralpe, Mürzsteiger Alpen



small/thin snowdrift patches



in very isolated cases



Low avalanche danger - but isolated danger zones

Avalanche danger is low, but avalanches cannot be excluded. Fresh snowdrift patches which have been deposited in extended E-facing terrain esp. behind discontinuities and in entries to gullies and bowls, can be triggered by 1 person. In addition, small glide-snow avalanches are possible in all aspects in zones which have not yet discharged.

Snowpack structure

The fundament is isotherm up to high altitudes, is often losing its attachment to the ground. Atop of it lie deposited on N/E/S facing slopes fresh snowdrift accumulations. Bonding is often poor. Weak layers inside the drifts, like graupel and fresh snow crystals, are possible. In addition, higher temperatures are destabilizing the snowpack.

Weather

On Monday in the Northern Alps, some cloud cover but no snowfall. As of midday, sunshine will prevail. On the southern flank of the Alps, sunshine from early morning. A strong-to-stormy NW wind will be blowing, esp. on the eastern rim of the Alps. In afternoon, the wind will slacken off, shift to southwesterly. At 2000 m: rising from -6 to -2 degrees.

Outlook

Tuesday will bring mild but windy weather to Styria. Winds from the south will be stormy, the sun only slightly hampered by high-altitude clouds. The snowdrift problem will recede.

Translated by Jeffrey McCabe, www.creativtrans.com

Avalanche problems



Danger ratings



Expositions

