

## Fresh snowdrifts due to fresh snow + NW winds



1800 m

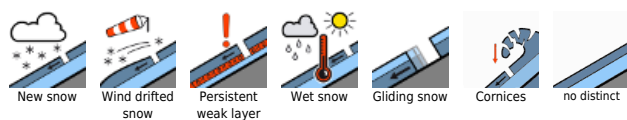
Schladminger Tauern Süd, Südliche Wölzer Tauern, Triebener Tauern, Eisenerzer Alpen, Hochschwabgebiet, Ennstaler Alpen, Rottenmanner Tauern, Nördliche Wölzer Tauern, Totes Gebirge, Dachsteingebiet, Schladminger Tauern Nord



Gurktaler Alpen, Gaaler Alpen, Seetaler Alpen, Stub- und Gleinalpe, Koralpe, Mürzteger Alpen



### Avalanche problems



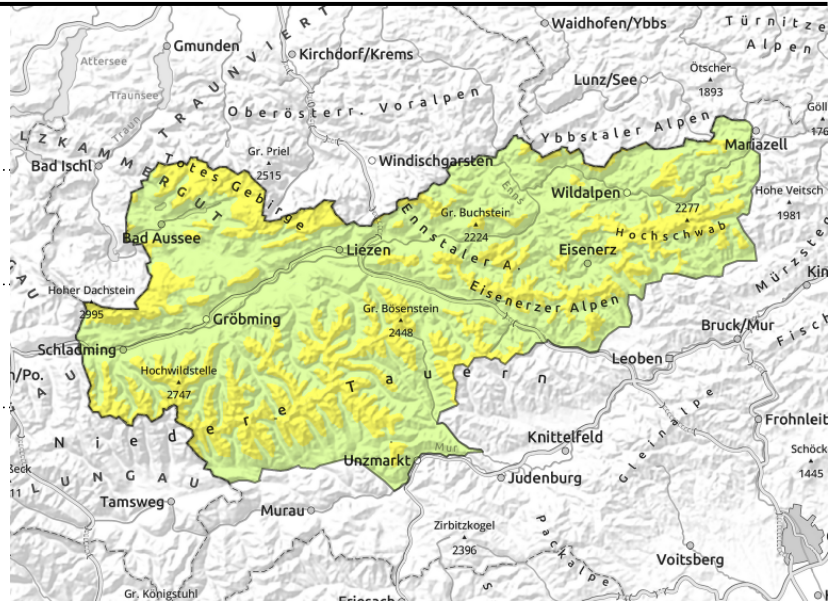
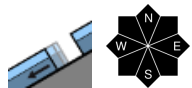
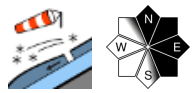
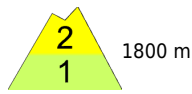
### Danger ratings



### Expositions



**Schladminger Tauern Süd, Südliche Wölzer Tauern, Triebener Tauern, Eisenerzer Alpen, Hochschwabgebiet, Ennstaler Alpen, Rottenmanner Tauern, Nördliche Wölzer Tauern, Totes Gebirge, Dachsteingebiet, Schladminger Tauern Nord**



## Moderate avalanche danger at high altitudes due to fresh snowdrift accumulations

Avalanche danger above 1800 m is moderate, below that altitude danger is low.

Fresh snowdrift accumulations have been deposited in extended SE facing terrain esp. behind discontinuities and in entries to gullies and bowls, they can be triggered by 1 person. Also on steep north-facing slopes there are still weak layers which can easily be triggered, slab avalanches can be medium-sized.

At intermediate altitudes, glide-snow avalanches can still trigger naturally on steep slopes in all aspects where there is enough snow, despite lower temperatures.

### Snowpack structure

The fundament is isotherm up to high altitudes, is often losing its attachment to the ground. Near-surface esp. south-facing layers were moist and wet prior to precipitation, atop of this the fresh drifts were deposited, esp. on E/S facing slopes, bonding will with the soft old snow. But bonding of fresh drifts on high altitude shady slopes is poor. In addition, weak layers inside the drifts exist, such as graupel or fresh snow crystals.

### Weather

On Palm Sunday, variably cloudy skies, instable conditions with some sunshine. At midday some snow or graupel showers. Cold, the snowfall level will rise from 700 to 1000 m during the daytime. Visibility reduced. The NW winds will start moderate, become brisker. At 2000 m: -6 degrees; at 1500 m: -4 degrees.

### Outlook

On Monday, improving weather, sunshine in the morning, the precipitation will end, temperatures rise from -8 degrees in the morning to +2 degrees in the afternoon at 2000 m. Fresh snowdrift accumulations will remain prone to triggering. Avalanche danger levels are not expected to change significantly.

#### Avalanche problems



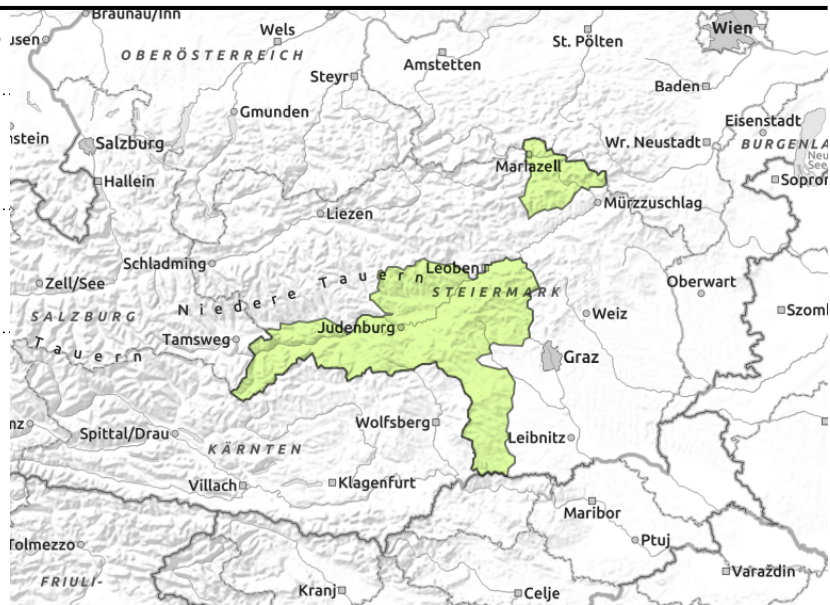
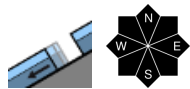
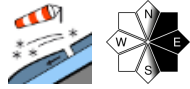
#### Danger ratings



#### Expositions



**Gurktaler Alpen, Gaaler Alpen, Seetaler Alpen, Stub- und Gleinalpe, Koralpe, Mürzsteiger Alpen**



**Low avalanche danger - small trigger-prone snowdrift accumulations**

Avalanche danger is low, but avalanches cannot be excluded. Fresh snowdrift patches which have been deposited in extended SE facing terrain esp. behind discontinuities and in entries to gullies and bowls, can be triggered by 1 person. In addition, small glide-snow avalanches are possible in all aspects in steep zones which have not yet discharged.

**Snowpack structure**

The fundament is isotherm up to high altitudes, is often losing its attachment to the ground. Near-surface esp. south-facing layers were moist and wet prior to precipitation, atop of this the fresh drifts were deposited, esp. on E/S facing slopes, bonding wll with the soft old snow. But bonding of fresh drifts on high altitude shady slopes is poor. In addition, weak layers inside the drifts exist, such as graupel or fresh snow crystals.

**Weather**

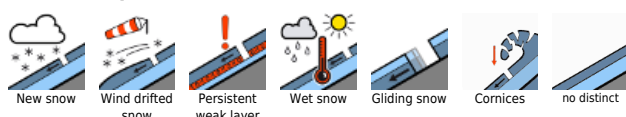
On Palm Sunday, variably cloudy skies, instable conditions with some sunshine. At midday some snow or graupel showers. Cold, the snowfall level will rise from 700 to 1000 m during the daytime. Visibility reduced. The NW winds will start moderate, become brisker. At 2000 m: -6 degrees; at 1500 m: -4 degrees.

**Outlook**

On Monday, improving weather, sunshine in the morning, the precipitation will end, temperatures rise from -8 degrees in the morning to +2 degrees in the afternoon at 2000 m. The freshly generated snowdrifts will gradually settle and danger levels recede.

Translated by Jeffrey McCabe, [www.creativtrans.com](http://www.creativtrans.com)

**Avalanche problems**



**Danger ratings**



**Expositions**

